

## Medical Quiz

---

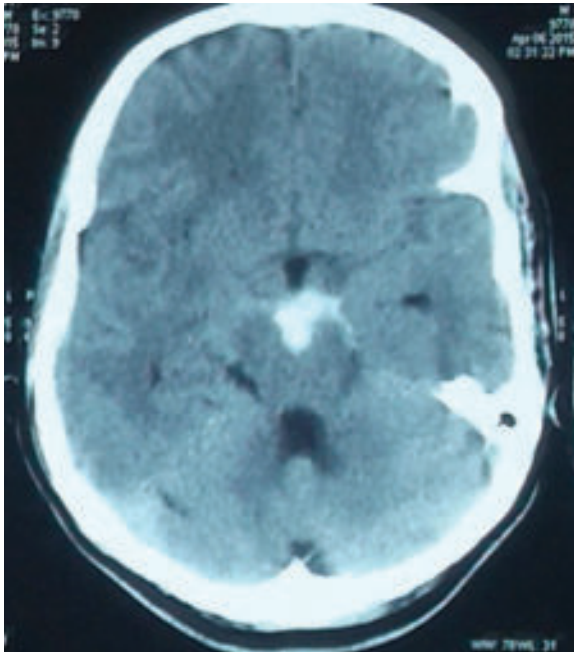
### Medical Quiz: Images

Islam MR<sup>a</sup>, Rahman T<sup>b</sup>

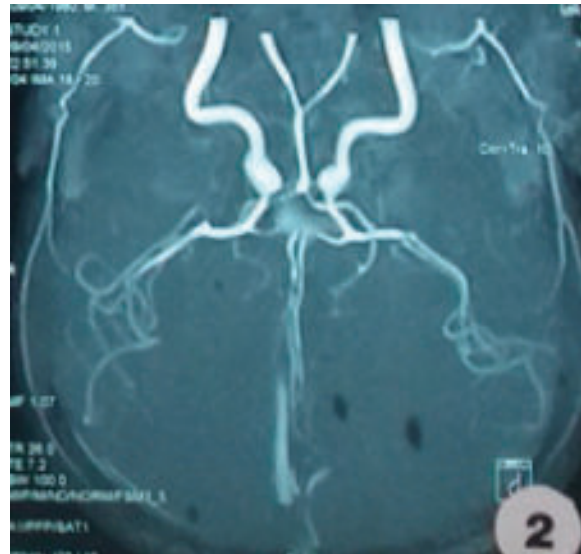
(*BIRDEM Med J 2018; 8(1): 83*)

A 35-years-old gentleman presented with drooping of left eyelid which was sudden on onset, painful associated with double vision more on left lateral gaze. He also had sudden, severe, dull aching headache associated with nausea & vomiting. On examination he was anxious, ill looking, left sided complete third nerve palsy & retinal haemorrhage. He also had hypertonia, diminished muscle power on both proximal & distal

muscles, hyperreflexia, extensor plantar response on right side. There was evidence of signs of meningeal irritation & hemiplegic gait. Study the CT scan of brain & CT angiogram of brain and answer the following questions.



**Figure 1**



**Figure 2**

**Q1.** Mention abnormal findings on CT scan of brain & CT angiogram in figure 1 and figure 2.

**Q2.** What should be the next investigation?

---

#### Author Information

- Dr. Md. Rashedul Islam, FCPS (Medicine), MRCP (UK), FACP (USA). Assistant Professor, Neurology, BIRDEM General Hospital, Shahbag, Dhaka, Bangladesh
- Dr Tanbin Rahman, MBBS, MRCP(UK), Registrar, Medicine, Greenlife Medical College Hospital, Bangladesh

**Address of correspondence:** Dr Md Rashedul Islam, FCPS (Medicine), MRCP (UK), FACP (USA). Assistant Professor, Neurology, BIRDEM General Hospital, Shahbag, Dhaka-1000, Bangladesh