



An Official Journal of Bangladesh Livestock Research Institute (BLRI)

Bangladesh Journal of Livestock Research

Journal Homepage: <https://www.banglajol.info/index.php/BJLR>



Genetic diversity analysis of lactic acid bacteria isolated from regional yogurt samples

K. M. Hossain^{1*}, B. Mazumder¹, S.M.M. Rahman¹ and M.A. Hamid²

¹Biotechnology and Genetic Engineering Discipline, Khulna University, Khulna-9208, Bangladesh

²Bangladesh School of Agriculture and Rural Development, Bangladesh Open University, Gazipur-1705, Bangladesh

Abstract

Probiotics are live, non-pathogenic microorganisms which have enormous health benefits. Yogurt is a potential source of probiotic bacteria. Lactic acid bacteria are the most common and major group of probiotic bacteria that can be found easily in different dairy products. The aim of study was the genetic diversity analysis using random amplified polymorphic DNA (RAPD) marker from regional yogurt samples of Bangladesh. Ten probiotic isolates from yogurt samples of different sweet meat shops of Sylhet and Mymensingh Divisions of Bangladesh were used. Morphological and biochemical tests were performed to ensure the presumptive probiotic characteristics of isolated bacteria. All isolates were cultured in De Man, Rogosa, and Sharpe (MRS) medium to exhort the growth of lactic acid bacteria. Genomic DNA was extracted by Ampicillin Lysozyme Tandem method. Four random RAPD primers were used in this study for detecting genetic diversity of these isolated bacteria. Among them, OPA 18 showed the maximum number of reproducible bands. Nei's genetic distance was performed for determining Pair-wise Genetic Distance. UPGMA and NJ dendrogram were performed based on molecular data showing that all the isolates could be divided into two major clusters. Data analysis revealed that isolates from the same location were closely related and showed less genetic variation whereas, isolates from geographically different regions exhibited more genetic diversity.

Key words: Lactic acid bacteria, Genetic diversity, RAPD-PCR and Yogurt samples

Bang. J. Livs. Res. Vol. 27 (1&2), 2020: P. 55-63. <https://doi.org/10.3329/bjlr.v27i1.55169>

Introduction

The word 'probiotic' is evolved from a peculiar mix of Latin (pro means for) and

Greek (bios means life) words. The term coined in 1960 as converted to antibiotics and defined as substances originates from

*Corresponding author: kmhossainbt@yahoo.com.au

protozoa. Two scientists named Lilley and Stillwell first narrated the term probiotics appropriately. They described it as the substances secreted by one microorganism that has the ability to stimulate the growth of another microorganism in our digestive tract (Lilly and Stillwell, 1965). Probiotic bacteria are gut beneficial bacteria that can create a physical barrier against harmful bacteria. Presently, more people are using probiotic products in order to treat their illnesses or to keep up overall well-being. Fermented food products like yogurt is a potential source of probiotics which contains potassium, B₂, B₁₂, calcium, magnesium, zinc and helps to maintain lower levels of circulating triglycerides, glucose, and lower systolic blood pressure and insulin resistance (Wang *et al.*, 2013).

Fermented milk products, cheese, yogurt are the major sources of probiotic bacteria. Fermentation of yogurt involves basically the use of lactic acid bacteria (LAB) like *L. acidophilus*, *L. rhamnosus*, *Lactobacillus bulgaricus*, *Lactobacillus plantarum*, *Bacillus coagulans*, *Bifido- bacteria spp.*, *Pediococcus spp.*, *Lactococcus spp.*, and *Streptococcus spp.* and so on (Bintsis, 2018, Nero *et al.*, 2008). Lactic acid bacteria are gram-positive, acid tolerant, usually nonsporulating, either rod-shaped (bacilli) or spherical (cocci) bacteria that share common metabolic and physiological characteristics. The methods for identification of lactobacilli at the strain level are very important and also beneficial for tracing new strains, because probiotics receptivity depends on its strain (Mayer *et al.*, 2005). Phenotypic characters (morphological and biochemical characters) of lactic acid bacteria is not appropriate to

differentiate them properly. For this reason, molecular characterization based on genetic characterization is badly needed. Several molecular methods are being used for the detection of genetic polymorphism such as DNA hybridization, protein pattern analysis, random amplified polymorphic DNA (RAPD), 16s rRNA gene analysis and repetitive elements palindromic PCR (REP-PCR). RAPD and polymerase chain reaction (PCR) are widely applicable methods for the amplification of DNA that are very sensitive, inexpensive, can be used for a large number of DNA samples within a short time (Tafvizi *et al.*, 2012). For classifying and ascertaining genetic variation and tracing lactic acid bacteria to the strain level RAPD markers have been widely applied (Samarzija *et al.*, 2002; Kaur *et al.*, 2016).

PCR is employed effectively for the evaluation of bacterial genetic diversity. Pair wise genetic sequence (Nei's genetic distance), unweighted pair group method with arithmetic mean (UPGMA) dendrogram are usually performed using the software PAUP (version 4.0) and NJ (Neighbor-joining) dendrogram performed to study the genetic distance and similarity. The results of the present study expected to provide information regarding the genetic variation in regional yogurt samples of Sylhet and Mymensingh Divisions of Bangladesh. The detection, molecular characterization and screening of probiotic function of *Lactobacillus* have been conducted partly using poultry sources in Mymensingh Division of Bangladesh (Kabir *et al.*, 2016). Literature reveals that research regarding molecular characterization of lactic acid bacteria from yogurt has not been conducted

so far in Bangladesh. Therefore, the present research work was undertaken for DNA extraction and genetic diversity analysis of lactic acid bacteria isolated from selected regional yogurt samples of Bangladesh by using RAPD marker.

Materials and Methods

Sample collection and isolation of lactic acid bacteria

A total of 10 yogurt samples (5 samples from Sylhet and 5 samples from Mymensingh) were collected from different dairy and sweet meat shops of Sylhet and Mymensingh Division of Bangladesh using ice box. Samples were diluted 7 times in peptone solution (0.1% w/v) and then inoculated in selective MRS broth media (pH 6.5) thereafter incubated under anaerobic conditions at 37°C temperature for 24h-48h in a bacteriological incubator. For the isolation of bacteria, the pour plate technique was used. Then the single colony of each sample was selected and isolated by using streak plate techniques. Probiotic properties of the isolates like low pH tolerance, bile tolerance, antimicrobial activity, NaCl tolerance, Coagulase test, Motility test, Sugar fermentation tests were performed following standard reference methods. The using of MRS (De Man, Rogosa and Sharpe) media was aimed to isolation of lactic acid bacteria.

DNA extraction

The pure colony was transferred into 5 ml sterile MRS broth culture and incubated at 37°C temperature for 24hr. Then 100 µl of active broth culture was re-inoculated into 10 ml sterile MRS broth and incubated at 37°C temperature for 10 h. The total genomic

DNA was extracted according to De *et al.* (2010) with slight modification. Two ml of bacterial culture was taken into a 2 ml micro-centrifuge tube and centrifuged at 5000 rpm for 5 min in a refrigerated centrifuge. The pellet washed twice using 1 ml of Na-EDTA. Bacterial washed pellet was resuspended in 100µl of NaCl-EDTA and 100 µl of lysozyme solution was mixed. Subsequently, 4 µl of RNase-A solution was added to the mixture before incubation to remove RNA. Then, the total mixture was incubated at 37°C temperature for 1 h with intermittent shaking. After that, additional NaCl-EDTA (430 µl) and 50 µl of a 10% SDS solution, 10 µl of proteinase K solution (20 mg/ml) were added to the mixer to make up to 500 µl. The contents were mixed properly and incubated at 55°C temperature for 1 h. An equal volume of Tris-saturated phenol (pH 8.0) was added after incubation and centrifuged at 10,000 rpm at 22°C temperature for 10 min and then the upper aqueous phase was discarded carefully. This step was repeated once with a fresh aliquot of Phenol–Chloroform mixture (1:1). The supernatant was collected and 0.8 volumes of Iso-propanol in the presence of 0.5M Sodium Acetate (pH 5.2) were added to precipitate out DNA in the supernatant and re-centrifuged at 10,000 rpm at 4°C temperature for 10 min. The supernatant was discarded and the DNA pellet was washed once with freshly prepared 70% ethanol and air dried and re-suspended in 100 µl TE buffer (pH 8.00). DNA samples were evaluated both quantitatively and qualitatively before PCR amplification.

RAPD-PCR

RAPD-PCR was performed according to the protocol of Chao *et al.*, (2008) with slight

modification.). The primers used were OPA 2 (5'-TGCCGAGCTG-3'), OPA 5 (5'-AGGGGTCTTG -3'), OPA-08 (5'-GTGACGTAGG-3') and OPA-18 (5'-AGGTGACCGT-3'). The PCR reaction mix was created by 0.20 µl of 250 µM dNTPs, 0.30 µl of 1.5 U Tag DNA, 2.40 µl of 3 mM MgCl₂, 2.00 µl of 1× PCR buffer, 1.00 µl of 10 Pmol primer, 1.00 µl of 5 ng/µl DNA template and 13.10 µl PCR grade water for 20 µl solution. Temperature profile of PCR reaction consisted of 1 cycle for initial denaturation at 94°C temperature for 3 min, 30 cycles of denaturation for 2 min at 94°C temperature, primer annealing for 1 min at 37°C temperature, primer extension for 2 min at 72°C temperature and final extension for 5 min at 72°C temperature.

Agarose gel electrophoresis

The quality of the DNA was determined by using gel electrophoresis which stained by ethidium bromide. The DNA fragments were observed under UV transilluminator after staining.

Genetic diversity Analysis

RAPD bands were treated as binary digits like if the band was presented then scored as 1 and 0 for absent, separately for each individual and each primer. The genetic similarities were calculated between all pairs of lactic acid bacteria accessions through the software Phylogenetic Analysis Using Parsimony (PAUP) version 4.0. Grouping of the genotypes were done by using UPGMA (Unweighted Paired Group with Arithmetic Average) and NJ (Neighbor-Joining) clustering methods.

Results

Isolation of lactic acid bacteria

Yogurt samples were collected from different regions of Bangladesh. At first they were separated according to their colony morphology, gram reaction and catalase reaction. Gram positive and catalase negative bacilli and cocci were elected for further biochemical tests (Table 1). MRS media was used because of the presence of Sodium Acetate, Ammonium Citrate, Magnesium Sulfate, Manganese Sulfate and Tween 80 which allow lactic acid bacteria to grow on the medium. Their morphological and biochemical characteristics also considered them as probiotic bacteria.

DNA content measurement

After DNA extraction, the genomic DNA from 10 bacterial isolates were visualized in 1.5% electrophoresis gel. Quantitative measurement of DNA was done by using UV spectrophotometer absorbance at 230 nm, 260 nm and 280 nm. The readings at A₂₆₀/A₂₈₀ ratio were within 1.5- 2.1. At A₂₆₀/A₂₃₀ ratio the results were within 1.4-2.2.

RAPD analysis

Four universal primers (OPA 2, OPA 5, OPA 8 and OPA 18) were used for producing reproducible bands. Total 131 bands were produced. Among them OPA 18 produced highest (19 bands) number of bands and lowest 2 number of bands were produced by OPA 5 (Figure 1 and Figure 2). The frequencies of polymorphic bands varied from primer to primer. OPA 2 and OPA 8 didn't generate satisfactory number of polymorphic bands.

Table 1. Morphological and biochemical characteristics of probiotic isolates collected from Sylhet and Mymensingh Divisions

Yogurt samples Name	Shape	Gram strain	Catalase test	Coagulation test	p ^H test	Bile salt test	NaCl test		
							4%	6%	8%
Sy 1	Bacilli	+	-	+	3.0	0.3%	4%	6%	8%
Sy 2	Bacilli	+	-	+	++	++	++	+	-
Sy 3	Cocci	+	-	+	++	++	++	+	-
Sy 4	Bacilli	+	-	+	++	++	++	+	-
Sy 5	Bacilli	+	-	+	++	++	++	+	-
My 6	Bacilli	+	-	+	++	++	++	+	-
My 7	Bacilli	+	-	+	++	++	++	+	-
My 8	Bacilli	+	-	+	++	++	++	+	-
My 9	Bacilli	+	-	+	++	++	++	+	-
My 10	Cocci	+	-	+	++	++	++	+	-

(‘++’ indicates higher tolerance, ‘+’ indicates medium tolerance, ‘-’ indicates no tolerance)

Isolates from Sylhet Division (Sy 1, Sy 2, Sy 3, Sy 4 and Sy 5); Isolates from Mymensingh Division (My 6, My7, My8, My9 and My 10); M-Molecular marker (1kb DNA ladder).



Figure 1. RAPD-PCR patterns of 10 isolates using primer OPA 18 on 1.5% agarose gel electrophoresis.

Isolates from Sylhet Division (Sy 1, Sy 2, Sy 3, Sy 4 and Sy 5); Isolates from Mymensingh Division (My 6, My7, My8, My9 and My 10); M-Molecular marker (1kb DNA ladder).



Figure 2. RAPD-PCR patterns of 10 isolates using primer OPA 5 on 1.5% agarose gel electrophoresis.

To understand the genetic relationship more clearly, Nei's genetic distance was performed. Mainly it indicates the pair wise genetic distance. Here, the measurement of genetic distance (Nei, 1972) varies between 0 and 1. '0' indicates that two populations are genetically identical (minimal or no genetic diversity).

Whereas a value of 1 indicates two populations are genetically different (maximum genetic diversity between the two populations). The analysis showed that the genetic distance value ranged from 0.1 to 0.8. UPGMA (Unweighted pair group method of arithmetic mean) dendrogram and NJ (Neighbor Joining) dendrogram were performed using the software PAUP version 4.0. UPGMA dendrogram divided 10 isolates into three major clusters (Figure 3). Phylogenetic analysis helped to understand the evolutionary relationship of lactic acid bacteria isolates where 'Sy' for Sylhet Division and 'My' for Mymensingh Division. Cluster I is the biggest cluster among three.

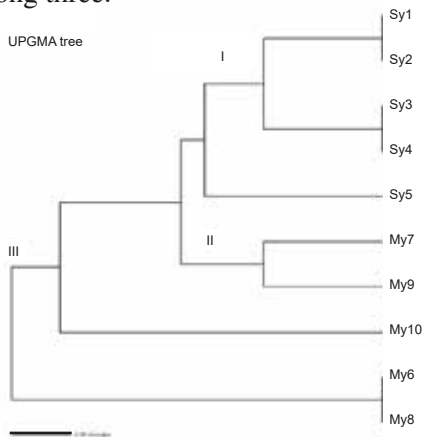


Figure 3. UPGMA dendrogram based on Nei's genetic distance, summarizing data showing dissociation of 10 isolates according to RAPD analysis.

Isolates from Sylhet Division (Sy 1, Sy 2, Sy 3, Sy 4 and Sy 5);

Isolates from Mymensingh Division (My 6, My7, My8, My9 and My 10).

The cluster I consisted of 5 Lactic acid bacteria isolates obtained from yogurt samples of different sweet meat shops of Sylhet Division. Cluster II consisted of 2 isolates and Cluster III consisted of 3 Lactic acid bacteria isolates from yogurt samples of

different sweet meat shops of Mymensingh Division. This indicated that Lactic acid bacteria (LAB) isolates in clusters II and III obtained from yogurt samples of different sweet meat shops of Mymensingh Division had genetic similarities. Hence, Lactic acid bacteria isolates from yogurt samples of Sylhet Division in cluster I had different genetic diversity from LAB isolates collected from yogurt samples of Mymensingh Division. NJ clustering method performed on molecular data produced similar results like UPGMA dendrogram (Figure 4). Three main clusters were observed in NJ dendrogram.

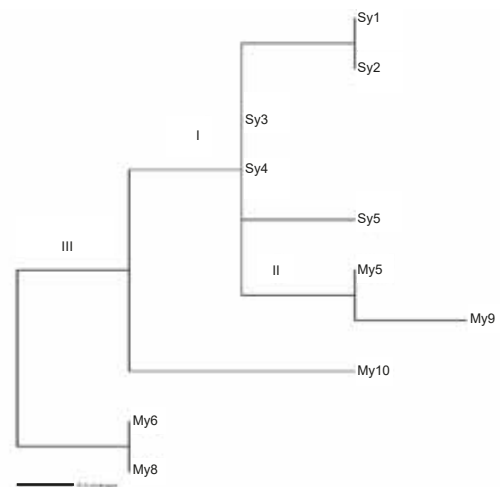


Figure 4. NJ dendrogram of 10 LAB isolates based on RAPD data using the software PAUP version 4.0. . Isolates from Sylhet Division (Sy 1, Sy 2, Sy 3, Sy 4 and Sy 5); Isolates from Mymensingh Division (My 6, My7, My8, My9 and My 10). According to this analysis, Sy 1, Sy 2, Sy 3, Sy 4 and Sy 5 were grouped together in NJ dendrograms. Sy1 and Sy 2 samples from Sylhet Division and My 6 and My 8 from Mymensingh Division showed close relationship and were placed together in NJ trees.

Discussion

Lactic acid bacteria is one of the main components in dairy products fermentation. Yogurt is an abundant source of lactic acid bacteria. *Lactobacillus* species from yogurt samples were identified observing their morphological characteristics and different biochemical characteristics by Hoque *et al.* (2010). The result of different biochemical test ensured the presence of *Lactobacillus* in Dahi (Kavitha *et al.*, 2016). These studies supported our lactic acid bacteria identification strategy. Good quality DNA contents observed in this experiment. This findings were quite similar to the work of Mustopa *et al.* (2018) and Sambrook *et al.* (1989). They observed good quality pure DNA contents at A260/280 were in the range of 1.8-2.0 and absorbance ratio at A260/230 were greater than 1.8. The lower value than 1.8 indicates the protein contamination.

Molecular tools are very effective in discriminating bacterial species. According to Coeuret *et al.* (2003), molecular methods played an important role in isolation and identification of probiotic bacteria from traditional dairy products for industrial purposes. RAPD fingerprinting is more effective and sensitive than biochemical methods for evaluating genetic variation among the isolates. Genetic diversity of lactic acid bacteria were detected in this experiment by using RAPD marker. For discriminating lactic acid bacteria, RAPD were used in several experiments (Ruiz *et al.*, 2008, Tafvizi *et al.*, 2012). RAPD method was used for molecular classification and determination of the genetic relationship of *Lactobacillus* species (Dimitonova *et al.*, 2008, Markiewicz *et al.*, 2010). In several experiments, the of identification *Lactobacillus*

using RAPD analysis with the OPA primers were described. Different types of random primers like OPA 2 and OPA 5 (Weiss *et al.*, 2005), OPA 2 (Hasslöf *et al.*, 2013) were used in RAPD analysis. OPA 18 and OPA 5 showed better amplification in this study whereas OPA 2 and OPA 8 didn't produce satisfactory polymorphic bands. The polymorphism demonstrated in the RAPD pattern was not so high. This was may be due to low number of experimental data, time shortage and low number of primer trial. However, this study showed different degrees of variation in regional probiotic bacteria more or less.

The overall experiment carried landscape of genetic relativity of lactic acid bacteria on regional basis. Isolates from similar geography showed less genetic diversity. UPGMA (Unweighted pair group method of arithmetic mean) dendrogram and NJ (Neighbor- Joining) dendrogram were exhibited quite similar findings. Both dendrogram exhibited that genetic diversity of lactic acid bacteria depends on geographical location and sources. Geographical influence on lactic acid bacteria also observed in Kusdianawati *et al.* (2020) work. According to Abdollahniya *et al.* (2018), *Lactobacillus* isolates showed highest genetic similarity and grouping together that were collected from geographically less distant location and sources. In the present study, isolates from same cluster showed more genetic similarity.

Conclusion

Genetic diversity of lactic acid bacteria exhibited in regional yogurt samples. Ten lactic acid bacterial isolates were obtained from yogurt samples collected from different sweet meat shops of Sylhet and Mymensingh Divisions of Bangladesh. Isolates were analyzed using RAPD-PCR.

On the basis of UPGMA and NJ dendrograms, isolates from distant locations showed more genetic variation than isolates from less distant regions. This study focuses on the genetic variation among lactic acid bacteria based on geographical location. As being used in the design of commercial starters, the lactic acid bacteria isolates characterized in this study might be used to help improve the safety of traditional yogurts through maintaining their original qualitative and sensorial characteristics. However, further investigations in this area may be able to give more information about genetic diversity in species and strains level.

Acknowledgement

The authors are grateful to the authority of National Agricultural Technology Program Phage II (NATP-2), Project Implementation Unit, Bangladesh Agricultural Research Council (BARC) for providing funding under Competitive Research Grant (CRG) by the World Bank.

References

- Abdollahniya D., Hosseini S.M., Baghbaderani B.K., Mordadi A., Arabestani M.R. 2018. Identification of Lactobacillus Species Isolated From Traditional Dairy Products Using RAPD-PCR. *Avicenna J. Clinical Microbiol. Inf.* 5(2): 7-13.
- Bintsis T. 2018. Lactic acid bacteria: their applications in foods. *J. Bacteriol. Mycol.* 6(2):89–94.
- Chao S.H., Tomii Y., Watanabe K., Tsai Y.C. 2008. Diversity of lactic acid bacteria in fermented brines used to make stinky tofu. *Intl J Food Microbiol* 123: 134-141. Coeuret V., Dubernet S., Bernardeau M., Gueguen M., Vernoux J.P. 2003. Isolation, characterization and identification of lactobacilli focusing mainly on cheeses and other dairy products. *EDP Sci.* 83:269–306.
- De S., Kaur G., Roy A., Dogra G. and Kaushik R. 2010. A Simple Method for the Efficient Isolation of Genomic DNA from Lactobacilli Isolated from Traditional Indian Fermented Milk (dahi). *Indian J. Microbiol.* 50(4):412–41.
- Dimitonova S.P., Bakalov B.V., Aleksandrova-Georgieva R.N. and Danova S.T. 2008. Phenotypic and molecular identification of lactobacilli isolated from vaginal secretions. *J. Microbiol. Immunol. Inf.* 41(6): 469-477.
- Hasslöf P., West C.E., Videhult F.K., Brandelius C, Stecksén-Blicks C. 2013. Early intervention with probiotic Lactobacillus paracasei F19 has no long-term effect on caries experience. *Caries Res.* 47(6):559-65.
- Hoque M., Akter F., Hossain K., Rahman M., Billah M., Islam K. 2010. Isolation, identification and analysis of probiotic properties of Lactobacillus spp. from selective regional yoghurts. *World J. Dairy and Food Sci.* 5(1):39-46.
- Kabir, S.M.L., Rahman S.S.M., Neogi S. and Rahman M. 2016. Isolation, identification, molecular characterization and screening of probiotic activities of Lactobacillus species from poultry sources at live bird markets in Mymensingh, Bangladesh. *Asian Australas. J. Biosci. Biotechnol.* 1:54-65.
- Kaur J., Sharma, A., Lee S. and Park Y. S. 2016. RAPD typing of Lactobacillus

- brevis isolated from various food products from Korea. *Food sci. biotechnol.* 25(6):1651–1655.
- Kavitha, P., Sindhuja D. and Banumathi M. 2016. Isolation and Biochemical Characterization of *Lactobacillus* species Isolated from Dahi. *Int. J. Curr. Microbiol. App. Sci.* 5(4): 1042-1049.
- Kusdianawati, Mustopa A.Z., Fatimah, Bugi R. and Budiart B.R. 2020. Genetic diversity of lactic acid bacteria isolated from Sumbawa horse milk, Indonesia. *Biodiversitas* 21:3225-3233.
- Lilly D.M. and Stillwell R.H. 1965. Probiotics: Growth promoting factors produced by microorganisms. *Sci.* 147: 747–748.
- Markiewicz L.H., Biedrzycka E., Wasilewska E. and Bielecka M. 2010. Rapid molecular identification and characteristics of *Lactobacillus* strains. *Folia Microbiol.* 55:481–488.
- Mayer H.M, Weiss A., Lettner H.P. and Kramer W. 2005. Molecular Methods Used for the Identification of Potentially Probiotic *Lactobacillus reuteri* Strains. *Food Technol. Biotechnol.* 43 (3):295–300.
- Mustopa A.Z, Puspitasari I.F., Fatimah, Triratna L. and Kartina G. 2018. Genetic diversity of mastitis cow's milk bacteria based on RAPD-PCR. *Biodiversitas* 19(5): 1714-1721.
- Nei and M. 1972 . Genetic distance between populations. *Am. Nat.* 106 (949): 283–292.
- Nero L.A., De Mattos M. R., De Aguiar Ferreira Barros M., Ortolani M.B.T., Beloti V., De Melo Franco B. D. G. 2008. *Listeria monocytogenes* and *Salmonella* spp. in Raw Milk Produced in Brazil: Occurrence and Interference of Indigenous Microbiota in their Isolation and Development. *Zoonoses Public Health* 55(6): 299- 305.
- Ruiz P., Izquierdo P.M., Seseña S., Palop M.L. 2008. Intraspecific genetic diversity of lactic acid bacteria from malolactic fermentation of Cencibel wines as derived from combined analysis of RAPD-PCR and PFGE patterns. *Food Microbiol.* 25(7):942-948.
- Samarzija D., Sikora S., Redzepovic S., Antunac N. and Havranek J. 2002. Application of RAPD analysis for identification of *Lactococcus lactis* subsp. *Cremoris* strains isolated from artisanal cultures. *Microbiol. Res.* 157:13–17.
- Sambrook J., Fritsch E.F., Maniatis T. 1989. *Molecular Cloning a Laboratory Manual*, 2nd Ed. Cold Spring Harbour Laboratory Press, New York.
- Tafvizi F. and Tajabadi E. M. 2012. Detection of genetic diversity and classification of *Lactobacillus* species isolated from Iranian traditional dairy products by RAPD fingerprinting and POPGENE analysis. *Ann. Biol. Res.* 3:4904–4911.
- Wang H., Livingston K.A., Fox C.S., Meigs J.B. and Jacques P.F. 2013. Yogurt consumption is associated with better diet quality and metabolic profile in American men and women. *Nutr. Res.* 33(1):1826.
- Weiss A., Lettner H.P., Kramer W., Mayer H. and Kneifel W. 2005. Molecular Methods Used for the Identification of Potentially Probiotic *Lactobacillus reuteri* Strains. *Food Tech. Biotechnol.* 43:295-300.