

CLINICAL IMAGE

MEDICAL QUIZ - 1

MD. MAHMUDUR RAHMAN SIDDIQUI¹, NAZNEEN MAHMOOD²

Received: 06-08-2022

Accepted: 10-08-2022

DOI: <https://doi.org/10.3329/bjm.v33i3.61382>

Citation: Siddiqui MMR, Mahmood N. Medical quiz: Image-1. Bangladesh J Medicine 2022; 33: 318.

A 67-year-old female presented with 4 months history of recurrent abdominal pain, anorexia and weight loss. Attending physician revealed some suspicious findings in abdominal examination and

advised for computed tomography (CT) scan of abdomen with contrast. Abdominal computed tomography (CT) scan axial contrast film are shown (Figures 1 - A & B) below.

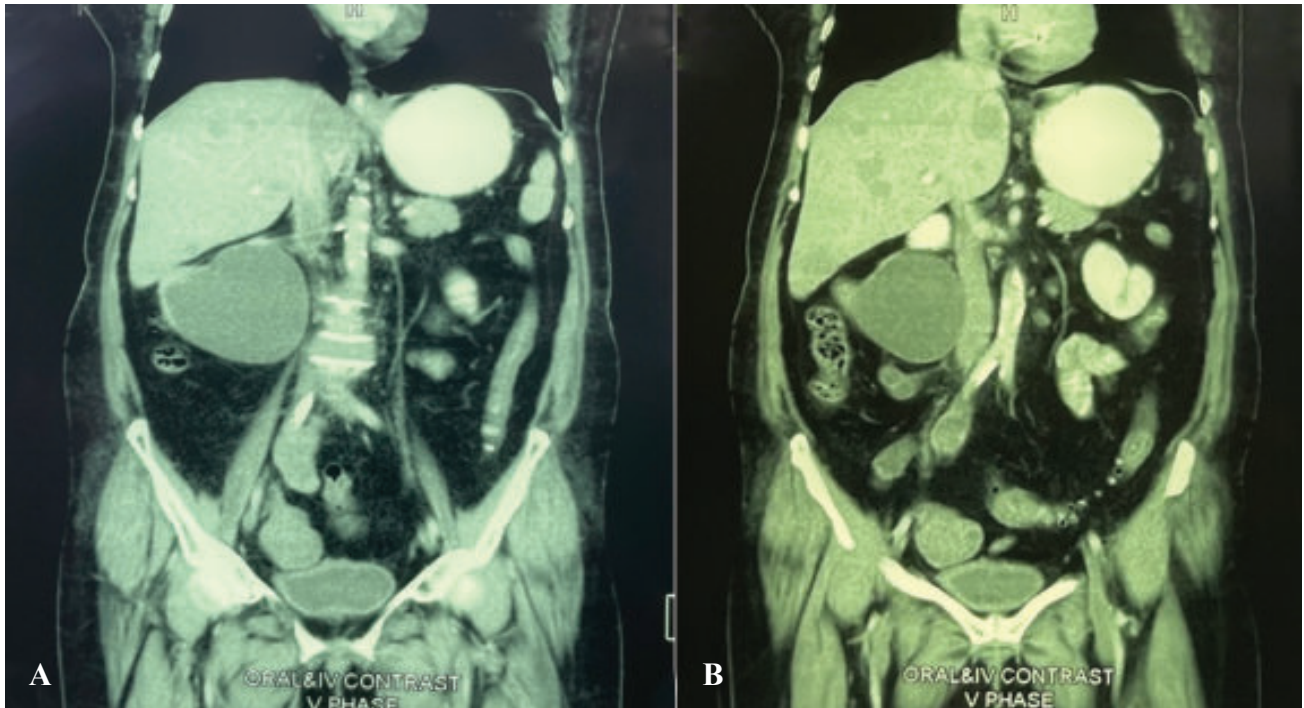


Figure-1 (A & B)

Answer the following questions

Question 1. Mention three abnormal radiological findings.

Question 2. Mention three differentials.

Question 3. Mention two tests that may establish the aetiological diagnosis.

1. Professor, Department of Medicine, Anwer Khan Modern Medical College.

2. Professor, Department of Nephrology, Anwer Khan Modern Medical College.

Address of correspondence: Prof. Dr. Md. Mahmudur Rahman Siddiqui, Professor of Medicine, Anwer Khan Modern Medical College. E-mail: dr.mahmud99@yahoo.com

Copyright: © 2021 Associations of Physicians of Bangladesh