

## CLINICAL IMAGE

### MEDICAL QUIZ: IMAGE-1

AKM MONWARUL ISLAM<sup>1</sup>, HUMAYRA JESMIN<sup>2</sup>

Received: 14.12.2023

DOI: <https://doi.org/10.3329/bjm.v35i1.70739>

Accepted: 19.12.2023

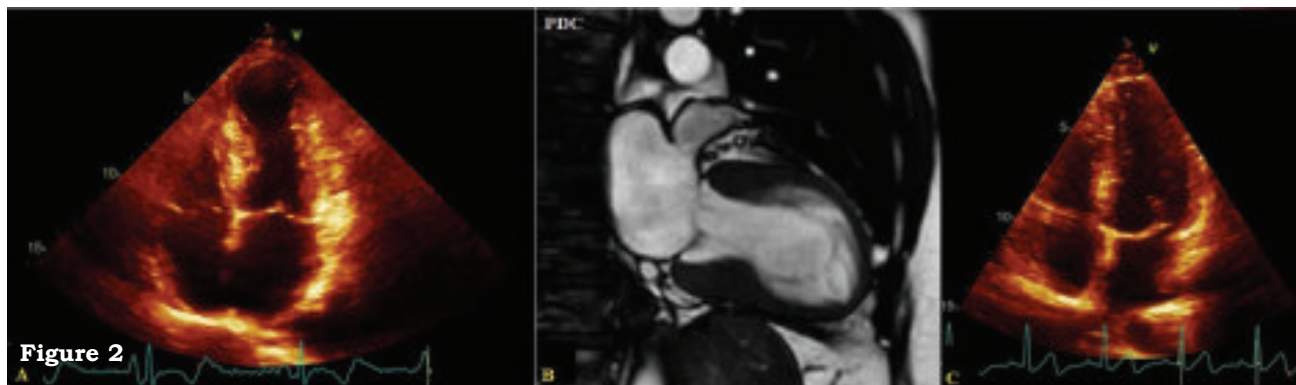
**Citation:** Islam AKMM, Jesmin H. Medical Quiz: Image-2. Bangladesh J Medicine 2024; 35: 48

A 55-year-old lady hypertensive, non-diabetic lady presented to a district hospital with central chest pain for 4 hours. Electrocardiography (ECG) was abnormal (Figure 1), and troponin I was raised. He was treated with streptokinase, and was referred to a cardiac hospital. There, she underwent transthoracic echocardiography (TTE) (Figure 2A), and cardiac magnetic resonance (CMR)

(Figure 2B) during the index hospitalization. Her coronary angiography (CAG) revealed normal epicardial coronary arteries. She was treated with antiplatelets, statin, beta blocker, angiotensin converting enzyme inhibitor, spironolactone and anticoagulant. Her condition improved. Besides clinical parameters, she was followed up by repeat TTE after 3 months (Figure 2C).



**Figure 1**



**Figure 2**

#### Questions:

1. What are the findings in resting ECG?
2. What is the single-most important observation in echocardiography during index hospitalization?
3. Mention the relevant finding(s) in CMR.
4. What is the clinical diagnosis?
5. Outline the pathophysiology of the condition.

1. Associate Professor, Department of Cardiology, National Institute of Cardiovascular Diseases, Dhaka, Bangladesh.

2. Junior Consultant (Internal Medicine), DNCC Dedicated Covid-19 Hospital, Dhaka, Bangladesh.

**Address of Correspondence:** Dr. AKM Monwarul Islam, Associate Professor, Department of Cardiology, National Institute of Cardiovascular Diseases, Dhaka 1100, Bangladesh. E- mail: [drmonwarbd@yahoo.com](mailto:drmonwarbd@yahoo.com). <https://orcid.org/0000-0001-9261-7734>