

CLINICAL IMAGE

MEDICAL QUIIZ: IMAGE -2

AMINUR RAHMAN¹

Received: 26-11-2024

DOI: <https://doi.org/10.3329/bjm.v36i1.78719>

Accepted: 28.12.2024

Citation: Rahman A. Clinical Image-2. Bangladesh J Medicine 2025; 36: 76

Keywords: MRI of Spinal Multiple sclerosis, Spinal MS, radiological of Spinal MS

A 30 years old female university student with no significant personal past or family history presented with backache for past 3 months which was aggravated during exertion relieved with analgesics. Since 1month she had shooting type of sensation across the back of thigh while bending forwards. These complaints were continuing till two weeks back, when she had felt weakness of left lower limb including proximal and distal muscles associated with urinary incontinence and paraesthesia. But she was able to appreciate all

the normal sensations. She also felt band like sensation over the level of umbilicus. MRI of cervical spine with contrast was done (Fig. A1, A2, B1, B2). Please answers the following questions

- What are the findings of the MRI?
- What is the diagnosis?
- What is the treatment?
- Mention two newer drugs approved by FDA

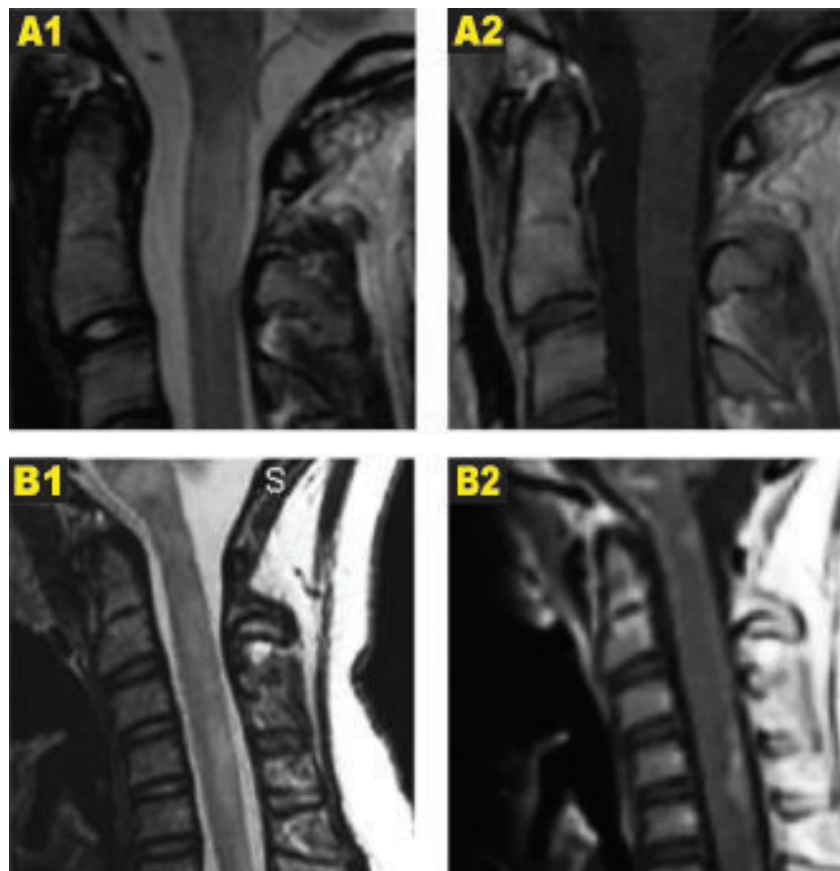


Figure (A&B): MRI of cervical spine with contrast was done