

## CLINICAL IMAGE

# MYOPERICARDITIS IN A YOUNG PATIENT WITH COVID-19

MD ROBED AMIN<sup>1</sup>, DMM OSMANY<sup>2</sup>

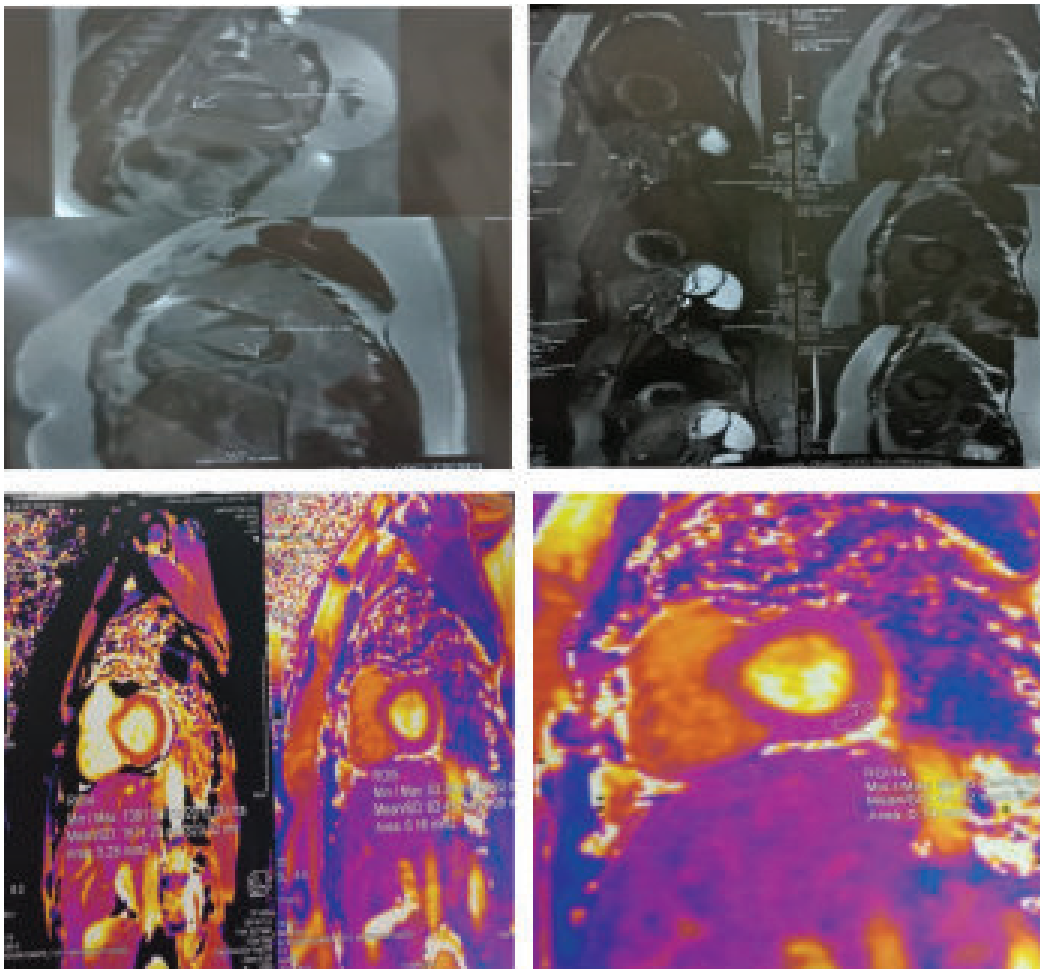
Received: 29 November, 2020

Accepted: 25 December, 2020

DOI: <https://doi.org/10.3329/bjm.v32i1.51100>

A 35 yrs old physician developed COVID-19 pneumonia in August 2020 and admitted in a tertiary care hospital in Dhaka city of Bangladesh with severe illness. She recovered from hypoxia and severe pneumonia in next two weeks. After recovery, she developed new onset diabetes mellitus controlled on 60 units of insulin,

newly developed HTN on 2 anti HTN drugs and recurrent paroxysmal palpitation and occasional low oxygen saturation on exertion. An ECG and 2- D echocardiography was unremarkable. Her lung function test was restrictive in nature



1. Professor of Medicine, Dhaka Medical College
2. Consultant Cardiologist, Bangabondhu Sheikh Medical Mujib University

**Address of Correspondence:** Dr.Md Robed Amin, Professor of Medicine, Dhaka Medical College

A cardiac MRI was observed and findings were oedema imaging T2 STIR has evidence of hyperintense signal and there is also LGE in PSIR. Both these points completed the lake louise criteria<sup>1,2</sup> of myopericarditis observed in COVID-19 infection. Evidence from Germany<sup>3</sup> and other Europe countries<sup>4</sup> suggested MRI of Heart to be done in suspected cases of COVID-19.

#### References:

1. Schulz-Menger J, Bluemke DA, Bremerich J, et al. Standardized image interpretation and post processing in cardiovascular magnetic resonance: Society for Cardiovascular Magnetic Resonance (SCMR) board of trustees task force on standardized post processing. *J Cardiovasc Magn Reson.* 2013;15(1):35. doi:10.1186/1532-429X-15-35
2. Dabir D, Child N, Kalra A, et al. Reference values for healthy human myocardium using a T1 mapping methodology: results from the International T1 Multicenter cardiovascular magnetic resonance study. *J Cardiovasc Magn Reson.* 2014;16(1):69. doi: 10.1186/s12968-014-0069-x
3. Puntmann VO, Carr-White G, Jabbour A, et al; International T1 Multicentre CMR Outcome Study. T1-mapping and outcome in nonischemic cardiomyopathy: all-cause mortality and heart failure. *JACC Cardiovasc Imaging.* 2016;9(1):40-50. doi:10.1016/j.jcmg.2015.12.001
4. Valentina O. Puntmann, M. Ludovica Carerj, Imke Wieters, Masia Fahim; Christophe Arendt, Jędrzej Hoffmann, Anastasia Shchendrygina, Felicitas Escher. Outcomes of Cardiovascular Magnetic Resonance Imaging in Patients Recently Recovered From Coronavirus Disease 2019 (COVID-19) *JAMA Cardiol.* doi:10.1001/jamacardio.2020.3557 Published online July 27, 2020.