



BJP

Bangladesh Journal of Pharmacology

Research Article

Hepatoprotective effect of *Cocculus hirsutus* on bile duct ligation-induced liver fibrosis in Albino Wistar rats

Hepatoprotective effect of *Cocculus hirsutus* on bile duct ligation-induced liver fibrosis in Albino Wistar rats

Sagar P. Thakare¹, Hitesh N. Jain¹, Savita D. Patil² and Umesh M. Upadhyay¹

¹Department of Pharmacology, Sigma Institute of Pharmacy, Bakrol, Waghodia, Baroda, Gujarat, India; ²Department of Pharmacology, R. C. Patel Institute of Pharmacy, Shirpur, Dhule, Maharashtra, India.

Article Info

Received: 5 August 2009
Accepted: 3 September 2009
Available Online: 6 September 2009
DOI: 10.3329/bjp.v4i2.2980

Cite this article:

Thakare SP, Jain HN, Patil SD, Upadhyay UM. Hepatoprotective effect of *Cocculus hirsutus* on bile duct ligation-induced liver fibrosis in Albino Wistar rats. Bangladesh J Pharmacol. 2009; 4: 126-30.

Abstract

In this animal model (Wistar rats of either sex), common bile duct was ligated for 28 days. Rats were treated for 28 days with methanol extract of *Cocculus hirsutus*. On day 29, blood and liver were collected for biochemical estimation and histopathological studies. Bile duct ligation produced liver fibrosis with generation of reactive oxygen species and induction of oxidative stress. Hence the different concentrations of methanolic extract of *C. hirsutus* were evaluated for *in vivo* glutathione reductase activity. On bile duct ligation the liver fibrosis was induced with significant rise in serum marker enzymes levels. The hydroxyproline accumulation caused by hydrophilic bile acids accompanied by elevated hepatic lipid peroxidation, and glutathione levels. Treatment with *C. hirsutus* extract decreased the elevated levels of serum marker enzymes showing hepatoprotection, which was further confirmed by histopathological results.

Introduction

Bile duct ligation is a typical model of biliary disease in animals, which features proliferation of bile duct epithelial cells, hepatocellular necrosis, apoptosis, stellate cell activation and eventually the formation of liver fibrosis and cirrhosis. Bile duct ligation has been associated with hepatic mitochondrial proteins and lipids and cytotoxicity of bile components such as lipophilic bile acids. The bile salts are partly responsible for the plasma membrane damage seen in bile-duct ligated models which leads to further oxidative stress (Wang et al., 2007).

Liver fibrosis is major features of a side range of chronic liver injury including metabolic, viral, cholestatic and genetic disease. The failure of bile salt excretion in cholestasis leads to retention of hydrophobic bile salts within the hepatocytes and causes apoptosis and necrosis (Lee et al., 2007). Bile duct ligation produces the lipid peroxidation in cellular membranes that induces cell injury and decreased in glutathione

indicating importance of free radical which damages the defense system in body.

Cocculus hirsutus (L) belonging to family Menispermaceae is a perennial climber mainly found in tropical and subtropical climatic condition (Panda and Mishra, 2007). The root destroys kapha and vata lessens bile (Kirtikar and Basu, 1987). The *C. hirsutus* shows hypoglycemic activity (Ganapaty and Bijay, 2006), diuretic, laxative activity (Ganapaty et al., 2002), hypolipidemic activity (Palsamy et al., 2007) and spermatogenic activity (Jayakar and Sangameswaran, 2007). Folk medicine claim that it may be used in jaundice.

We still do not have any specific agent for hepatoprotection. However, several studies suggest that some herbal plants such as *Spirulina maxima* (Torres-Durain et al., 1999), *Eclipta alba* (Saxena et al., 1993), *Boehmeria nivea* (Lin et al., 1998), *Cichorium intybus* (Zafar and Ali, 1998), *Picrorhiza kurrooa* (Saraswat et al., 1999), *Trianthema decandra* (Balamurugan and



Muthusamy, 2008), and *Phyllanthus niruri* (Iqbal et al., 2007) etc. have hepatoprotective effects.

The literature survey revealed that there are no scientific studies carried out on hepatoprotective activity of the *C. hirsutus*. Hence, the present study is focused to evaluate the hepatoprotective and antioxidant potentials of the plant against bile duct ligation-induced liver fibrosis albino Wistar rats.

Materials and Methods

Collection and authentication of plant: The plant was collected from local area of Shirpur, Dhule Maharashtra, India. The plant was authenticated by Dr. D.A. Patil, Department of Botany, S.S.V.P.S College of Science, Dhule, Maharashtra, India.

Extraction methodology: The plant was air dried, cut into small pieces and pulverized into powder. Five hundred gram of dried, powdered plant material was extracted with petroleum ether (60-80°C) using soxhlet apparatus to remove lipids. It was then filtered and filtrate was discarded. The residue was then extracted successively with methanol using soxhlet apparatus and methanol was evaporated in a rotary evaporator at 40-50°C under reduced pressure. The residual extract was suspended in water for overnight and filtered. The filtrate was dried and stored. The yield of extract was 20% with reference to dry starting material (Palsamy and Malathi, 2007).

The phytochemical investigation was performed according to Kokate and Purohit, 2004.

Experimental animals: Three months old Wistar Albino rats of either sex weighing 150-250 g were used for the study. The animals were procured from animal house of R.C. Patel IPER Shirpur. The animals were placed at random and allocated to treatment groups in polypropylene cages with paddy husk as bedding. Animals were housed at a temperature of 24 ± 2°C and relative humidity of 30-70%. A light and dark cycle was followed. All animals were fed on standard balanced diet and provided with water *ad libitum*.

All the experimental procedures and protocols used in the study were reviewed and approved by the (IAEC) Institutional Animal Ethical Committee of R.C. Patel IPER, Shirpur and were in accordance with the guidelines of the Committee for the Purpose of Control and Supervision of Experiments on Animals (CPCSEA). Registration No.RCPCOP/IAEC/2007-2008/30.

Toxicity study (OECD 425): Acute oral toxicity was conducted for methanol extract on albino mice according to OECD 425 and median effective dose (ED₅₀) of extract was selected based on LD₅₀ obtained from acute toxicity studies.

Bile duct ligation induced liver damage (Vogel and Vogel, 2002): Rats were anesthetized with ketamin and

Table I

Physical parameters in bile duct ligation animals		
Groups	Liver weight (g)	Liver volume (mL)
Normal	8.5	7.6
Bile duct ligated	12.4	11
Bile duct ligated + Silymarin (50 mg/kg)	9.5	7.6
Bile duct ligated + Methanol extract of <i>Cocculus hirsutus</i> (100 mg/kg)	9	8.5
Bile duct ligated + Methanol extract of <i>Cocculus hirsutus</i> (200 mg/kg)	12	11.7
Bile duct ligated + Methanol extract of <i>Cocculus hirsutus</i> (400 mg/kg)	10.8	11.3

diazepam. Laparotomy was performed under antiseptic conditions. A midline incision in the abdomen was made from the xiphosternum to the pubis, exposing the muscle layers and the linea alba, which was then incised over a length corresponding to the skin incision. The edge of the liver was then raised and the duodenum pulled down to expose the common bile duct, which pursues an almost straight course of about 3 cm from the hilum of the liver to its opening into the duodenum. There was no gall bladder, and the duct was embedded for the greater part of its length in the pancreas, which opens into it by numerous small ducts. A blunt aneurysm needle was passed under the part of the duct selected, stripping the pancreas away with care, and the duct was divided between double ligatures of cotton thread. The peritoneum and the muscle layers as well as the skin wound were closed with cotton stitches.

All animals were grouped as follows containing six animals in each group. The animals of Group I received only distilled water for 28 days. The bile ducts of animals of Group II were ligated for 28 days. In Group III the standard drug silymarin (50 mg/kg) was administered in bile duct ligated animals. In Group IV, Sham operated rats had their bile duct exposed but not ligated or sectioned.

Group V, Group VI, Group VII, underwent bile duct ligation surgery followed by simultaneous administration of three different doses of methanol extract of *C. hirsutus* (100, 200 and 400 mg/kg) respectively for 28 days.

Biochemical estimations: On day 29, blood was withdrawn from all groups of rats by puncturing retro-orbital plexus. The blood samples were allowed to coagulate at room temperature. Serum was separated by centrifugation at 3,000 rpm at room temperature for 20 min and subjected to biochemical estimations serum

transaminases, alkaline phosphatase, lactate dehydrogenase and bilirubin. Determination of serum total and direct bilirubin was done by using microplate reader (Power wave; Biotek Pvt. Ltd. Mumbai).

Hydroxyproline content in the liver: (Wardi et al., 2001): Small samples of liver tissue were hydrolyzed by 6N HCl for 3 hours at 130°C. Few drops of the methyl red indicator were added followed by 2.5 N NAOH required for neutralization. Final adjustments were made with diluted HCl and NAOH until the indicator turned slightly yellow, corresponding to pH 6.0 ± 7.0. The concentrations of NaCl in the final dilutions did not exceed 0.4 M as required. Samples of 2 mL were then oxidized by adding 1 mL chloramine T (Sodium p-toluene sulfonchloramide). After 20 min of mixing and shaking the test tubes 1 mL perchloric acid was added to each tube. After 5 min 1 mL p-dimethylamino-benzaldehyde solution was added and the mixture was shaken for 5 min. The tubes were placed in a 60°C water bath for 20 min and then cooled in tap water for 5 min. The absorbance was measured at 557 nm.

Histopathological examination: The rat liver was dissected out and fixed in 10% formalin and further processed for histopathological investigations.

Statistical analysis: The data were analyzed statistically by one way ANOVA followed by Dunnett's test. p<0.05 was considered as significant.

Estimation of anti-oxidant activity: Glutathione *in vivo* estimation was done to the same group of rats according to Beutler et al., 1963. The glutathione content of liver sample, in µmol/mg of protein.

Results

Phytochemical investigation of methanol extract of *C. hirsutus* revealed presence of various active constituents Alkaloids, Glycosides and Amino acids.

The LD₅₀ of plant methanolic extract was found to be 2,000 mg/kg. The effective dose 200 mg/kg was selected based on LD₅₀ of plant.

Hepatomegaly occurs due to accumulation of lipids and proteins in hepatocytes, with an impaired protein secretion by hepatocytes. Water is retained in the cytoplasm of hepatocytes leading to enlargement of liver cells, resulting in increased total liver mass and volume (Rao et al., 2007) which is expressed in Table I.

The activities of various biochemical enzymes in normal, Bile duct ligated, methanolic extract treated groups are expressed in Table II. In bile duct ligated control group there was significant rise in serum marker enzymes levels, compared to normal where as methanolic extract treated groups showed significant decrease in all enzyme level. There was significant rise in glutathione level of extract treated group as compared to bile duct ligated animals (Table III).

Histopathological findings showed that as compared to normal animals, the bile duct ligated animals showed necrosis, lymphocyte infiltration and portal inflammation (Figure 1). Sham treated animals showed normal liver histology and methanolic extract-treated animals showed decreased in the inflammation and fibrosis and restoring normal cell structure.

Table II

Biochemical estimation in bile duct ligated animals

Group	Aspartate transaminase (IU/L)	Alanine transaminase (IU/L)	Alkaline phosphatase (IU/L)	Lactate dehydrogenase (IU/L)	Total bilirubin (%mg)	Direct bilirubin (%mg)	HP (mg/g)
Normal	66 ± 1.5	49 ± 1.3	175 ± 1.4	150 ± 1.3	0.2 ± 0.01	0.1 ± 0.0	4.9 ± 0.2
Bile duct ligated	154 ± 1.6	128 ± 1.0	424 ± 1.5	331 ± 2.2	0.8 ± 0.02 ^b	0.2 ± 0.01	13 ± 0.2
Bile duct ligated + Silymarin (50 mg/kg)	84 ± 0.9 ^b	71 ± 0.9 ^b	198 ± 1.1 ^b	178 ± 1.1 ^b	0.2 ± 0.01 ^b	0.1 ± 0.01 ^b	7.2 ± 0.2 ^b
Sham treated	62 ± 2.7 ^b	50 ± 1.0 ^b	179 ± 2.2 ^b	149 ± 1.7 ^b	0.2 ± 0.01 ^b	0.01 ± 0.01 ^b	5.4 ± 0.2 ^b
Bile duct ligated + Methanolic extract (100 mg/kg)	134 ± 2.9 ^b	115 ± 2.4 ^b	394 ± 7.8 ^b	288 ± 2.3 ^b	0.7 ± 0.02 ^b	0.2 ± 0.01 ^a	12 ± 0.5 ^a
Bile duct ligated + Methanolic extract (200 mg/kg)	113 ± 1.7 ^b	96 ± 1.0 ^b	353 ± 7.2 ^b	249 ± 4.6 ^b	0.6 ± 0.01 ^b	0.2 ± 0.0 ^b	11 ± 0.4 ^b
Bile duct ligated + Methanolic extract (400 mg/kg)	93 ± 1.3 ^b	81 ± 0.7 ^b	314 ± 2.3 ^b	229 ± 3.0 ^b	0.4 ± 0.01 ^b	0.2 ± 0.01 ^b	10 ± 0.7 ^b

Values are expressed as mean ± SEM; n = 6; ^ap<0.05, ^bp<0.01 when compared with the toxicant control groups (one-way ANOVA followed by Dunnett's test); HP means hydroxyproline

Table III	
Effect of methanol extract of <i>Cocculus hirsutus</i> on glutathione level in bile duct ligated rats	
Group	Glutathione level μmol/mg of protein
Normal saline treated	1.8 ± 0.0
Bile duct ligated	0.8 ± 0.0
Silymarin treated (50 mg/kg)	1.7 ± 0.0
<i>Cocculus hirsutus</i> extract (400 mg/kg)	1.4 ± 0.0

Discussion

Liver fibrosis is major feature of wide range of chronic liver injuries including metabolic, viral, cholestatic and genetic. The proliferation of the bile ducts (ductular reaction) of the liver in response to various liver injuries is characterized by an increase in the number of intrahepatic bile ducts (Yoshioka et al., 2005). In the present study hepatic damage with fibrosis was produced by common bile duct ligation for 28 days. Bile duct ligation is associated with hepatic dysfunction includes the oxidative damage to mitochondrial proteins and lipids and cytotoxicity of bile acids. Release of reactive oxygen species (free radicals) leads to cell damage.

The hepatic stellate cells (Ito cells, hepatic lipocytes, or fat-storing cells) play an important role in the pathogenesis of hepatic fibrosis, cirrhosis, and liver remodeling. After liver injury, hepatic stellate cells undergo activation and transdifferentiation to myofibroblast-like cells. α -SMA is a marker for myofibroblast-like cells (Tieppo et al., 2005).

Bile duct ligation also induces oxidative stress which leads to formation of free radicals and lipid peroxidation (Tieppo et al., 2005). Significant rise in the aspartate transaminase, alanine transaminase, alkaline phosphatase, lactate dehydrogenase, hydroxyproline, total bilirubin, direct bilirubin level and marked reduction in the levels of above mentioned enzymes were observed with methanolic extract of *C. hirsutus* treatment.

The body has an effective defense mechanism to prevent and neutralize the free radical induced damage. This is accomplished by a set of endogenous antioxidant enzymes such as superoxide dismutase, catalase and GSH etc. These enzymes constitute a mutually supportive team of defense against reactive oxygen species. Bile duct ligation induces imbalance between reactive oxygen species production and these anti-oxidant defense which results into oxidative stress through a series of events deregulates the cellular functions leading to hepatic damage (Sanmugapriya

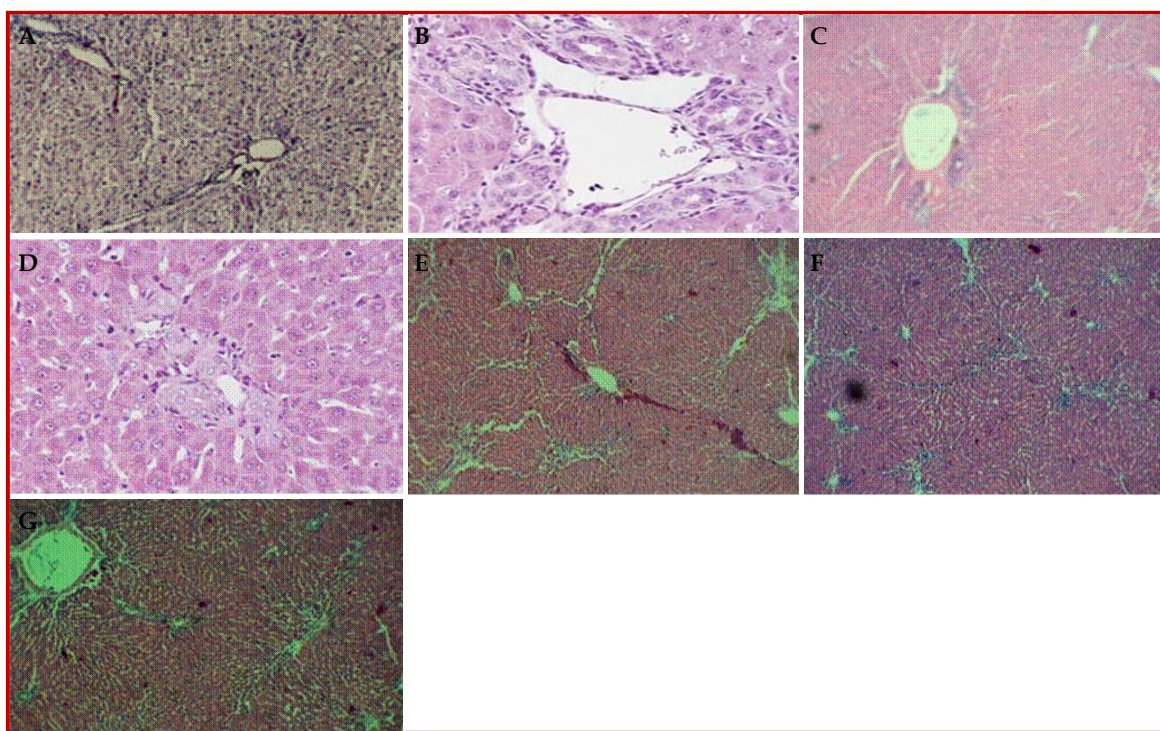


Figure 1: (A) Histology of normal liver showing normal hepatocyte, prominent central vein and sinusoids; (B) Bile duct ligated liver showing necrosis and portal inflammation, lymphocyte infiltration; (C) Sham treated liver showing normal liver histology, prominent central vein and hepatocytes; (D) Silymarin-treated liver showing necrosis and portal inflammation decreases compared with bile duct ligation; (E) Methanol extract (100 mg/kg) showing mild bile duct proliferation and portal inflammation; (F) Methanol extract (200 mg/kg) showing few area of necrosis and fatty change are seen; (G) Methanol extract (400 mg/kg) showing small areas of lymphocyte infiltration and restoration of cells near to normal are seen (Hematoxylin and Eosin stain X 100)

and Venkataraman, 2006).

The anti-oxidant and hepatoprotective effects of *C. hirsutus* could be due to presence of phytochemicals like B-sitosterol, trilobine, isotriline, syringaresionol, protoquercitol, ginnol and glycosides (Palsamy et al., 2007; Jayakar and Sangameswaran, 2007).

Conclusion

The methanolic extract of *C. hirsutus* shows hepatoprotective and anti-oxidant activity.

Acknowledgement

Authors are thankful to Principal S. J. Surana, R. C. Patel IPER for providing the necessary facilities for carrying out this research work.

References

- Balamurugan G, Muthusamy P. Observation of the hepatoprotective and antioxidant activities of *Trianthema decandra* Linn. (*Vallai sharunnai*) roots on carbon tetrachloride-treated rats. *Bangladesh J Pharmacol.* 2008; 3: 83-89.
- Buetler E, Duron O, Kelly BM. Proved method for determination of blood glutathione. *J Lab Clin Med.* 1963; 61: 882-87.
- D'SOUZA M. Tribal Medicine. Social center, Ahmednagar, 1st ed. India, 1998, pp 143-44.
- Ganapaty S, Dash GK, Suresh P. Diuretic, laxative and toxicity studies of *Cocculus hirsutus* aerial parts. *Fitoterapia* 2002; 73: 28-31.
- Ganapaty S, Vijay K. Hypoglycemic activity of aerial parts of *Cocculus hirsutus* on alloxan-induced diabetes. *Indian J Nat Prod.* 2006; 22: 17-20.
- Iqbal MJ, Dewan ZF, Choudhury SAR, Mamun MIR, Mashiuzzaman M, Begum M. Pre-treatment by hexane extract of *Phyllanthus niruri* can alleviate paracetamol-induced damage of the rat liver. *Bangladesh J Pharmacol.* 2007; 2: 43-48.
- Jayakar B, Sangameswaran B. Anti-diabetic and spermatogenic activity of *Cocculus hirsutus* (L) diels. *African J Biotech.* 2007; 6: 1212-16.
- Kirtikar KR, Basu BD. Indian medicinal plants. 2nd ed. India, International Book Publishers, 1987, pp 86-87.
- Kokate CK, Purohit AP, Gokhale SB. Pharmacognosy, 26th ed. India, Nirali Prakashan, 2004, pp 101-10.
- Lee TY, Chang HH, Chenjenn H. Herb medicine ameliorates hepatic fibrosis in bile duct ligation rats. *J Ethnopharmacol.* 2007; 109: 318-24.
- Lin CC, Yen MH, Lo TS, Lin JM. Evaluation of the hepatoprotective and anti-oxidant activity of *Boehmeria nivea* var. *nivea* and *B. nivea* var. *tenacissima*. *J Ethnopharmacol.* 1998; 60: 9-17.
- OECD Guidelines for the testing of chemicals revised draft guideline 425: Acute oral toxicity-2001. Acute toxic class method.
- Palsamy P, Malathi R. Evaluation of hypoglycemic and hypolipidemic activity of methanolic extract of *Cocculus hirsutus* (L) diels leaves in streptozotocin-induced diabetes mellitus rats. *Int J Biol Chem.* 2007; 1: 205-12.
- Panda BK, Mishra US. Antibacterial activity of the leaves of *Cocculus hirsutus*. *Indian Drugs,* 2007; 44: 108-10.
- Rao VN, Patil N, Shalam MD. Hepatoprotective activity of alcoholic and aqueous extracts of leaves of *Tylophora indica* (Linn) in rats. *Indian J Pharmacol.* 2007; 39: 43-47.
- Sanmugapriya E, Venkataraman S. Studies on hepatoprotective and anti-oxidant actions of *Strychnos potatorum* Linn. seeds on CCl₄ induced acute hepatic injury in experimental rats. *J Ethnopharmacol.* 2006; 105: 154-60.
- Saraswat B, Visen PKS, Patnaik GK, Dhawan BN. *Ex vivo* and *in vivo* investigations of picroliv from *Picrorhiza kurrooa* and in alcohol intoxication model in rats. *J Ethnopharmacol.* 1999; 66: 263-69.
- Saxena AK, Singh B, Anand KK. Hepatoprotective effects of *Eclipta alba* on subcellular levels in rats. *J Ethnopharmacol.* 1993; 40: 155-16.
- Tieppo J, Vercelino R, Dias AS, Marroni CA, Marroni N. Common bile duct ligation as a model of hepatopulmonary syndrome and oxidative stress. *Arq Gastroenterol.* 2005; 42: 244-48.
- Torres-Durain PV, Miranda-Zamora R, Paredes Carbajal MC, Mascher D, Bie-Castillo J, Diaz-Zagoya JC. Studies on the preventive effect of *Spirulina maxima* on fatty liver development by carbon tetrachloride in the rat. *J Ethnopharmacol.* 1999; 64: 141-47.
- Vogel GH, Vogel WH. Drug discovery and evaluation. *Pharmacological Assays.* 2nd ed. Germany. Springer 2002, pp 936-44.
- Wang G, Shen H, Rajaraman G, Roberts MS, Gong Y, Jiang P, Burczynsk F. Expression and antioxidant function of liver fatty acid binding protein in normal and bile-duct ligated rats. *Eur J Pharmacol.* 2007; 560: 61-68.
- Wardi J, Reifen R, Aeed H, Zadel L, Avni Y, Bruck R. Beta carotene attenuates experimentally induced liver cirrhosis in rats. *Isr Med Assoc J.* 2001; 3: 151-54.
- Yoshioka K, Mori A, Taniguchi K, Mutoh K. Cell proliferation activity of proliferating bile duct after bile duct ligation in rats. *Vet Pathol.* 2005; 42: 382-85.
- Zafar R, Ali SM. Anti-hepatotoxic effects of root and root callus of *Cichorium intybus*. *J Ethnopharmacol.* 1998; 63: 227-31.

Author Info

Sagar P. Thakare (Principal contact)
e-mail: sagarthakare@rediffmail.com