

Figure 1: Total ion chromatogram (TIC) of standard chemicals analyzed by the LC-MS method

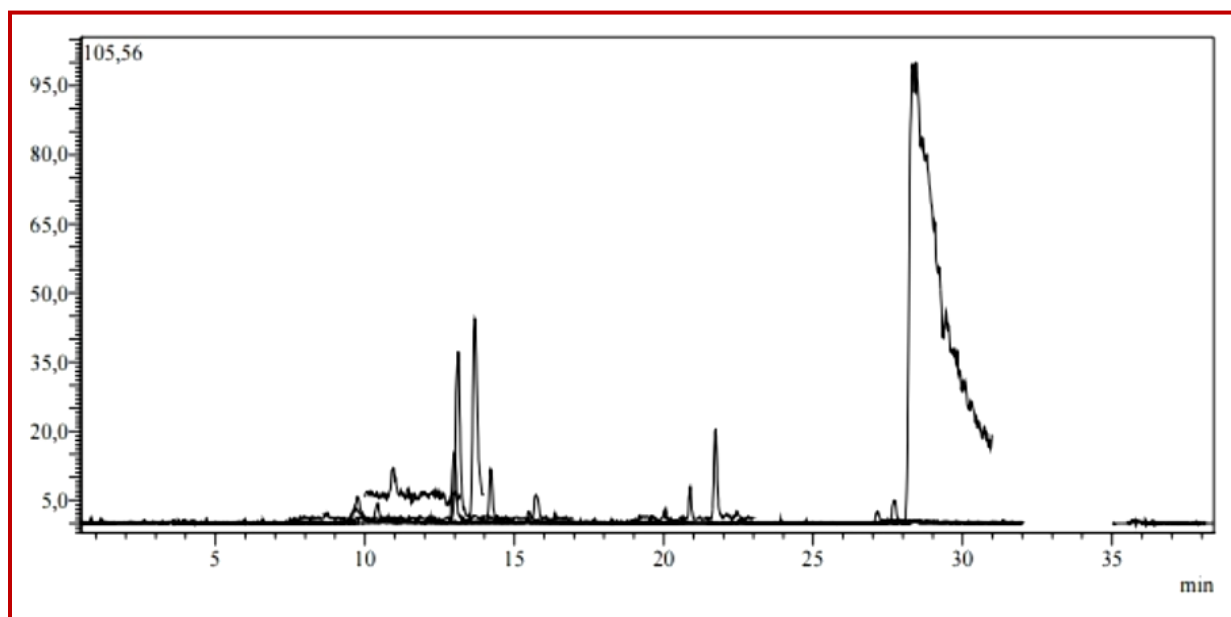


Figure 2: Total ion chromatogram (TIC) of CH₂Cl₂ extract analyzed by the LC-MS method

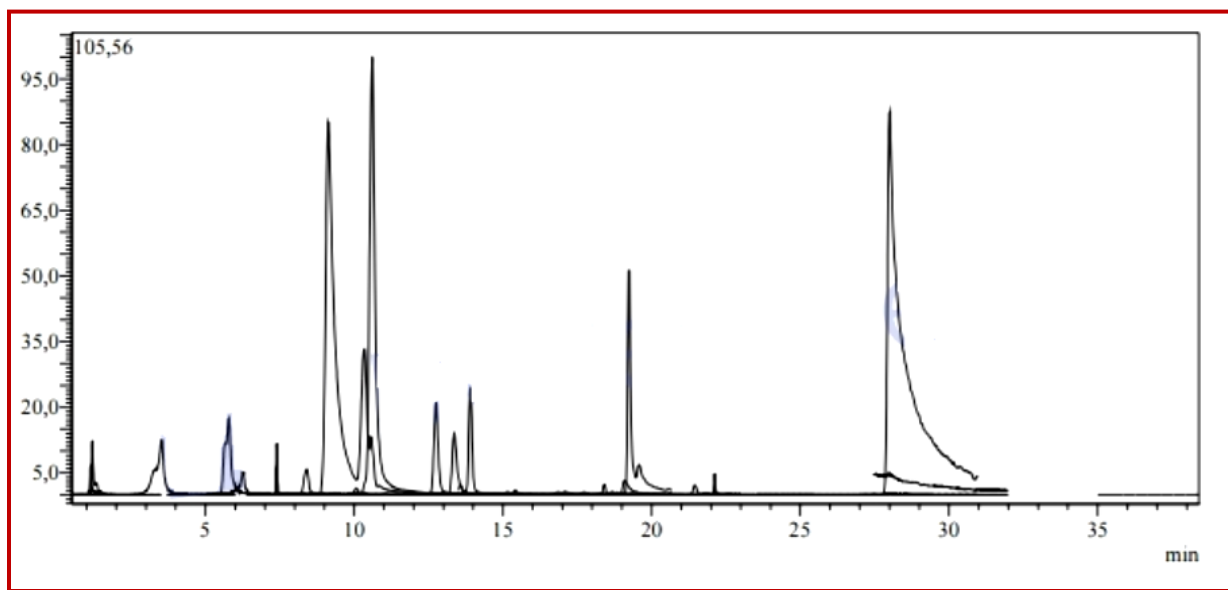


Figure 3: Total ion chromatogram (TIC) of EtOAc analyzed by the LC-MS method

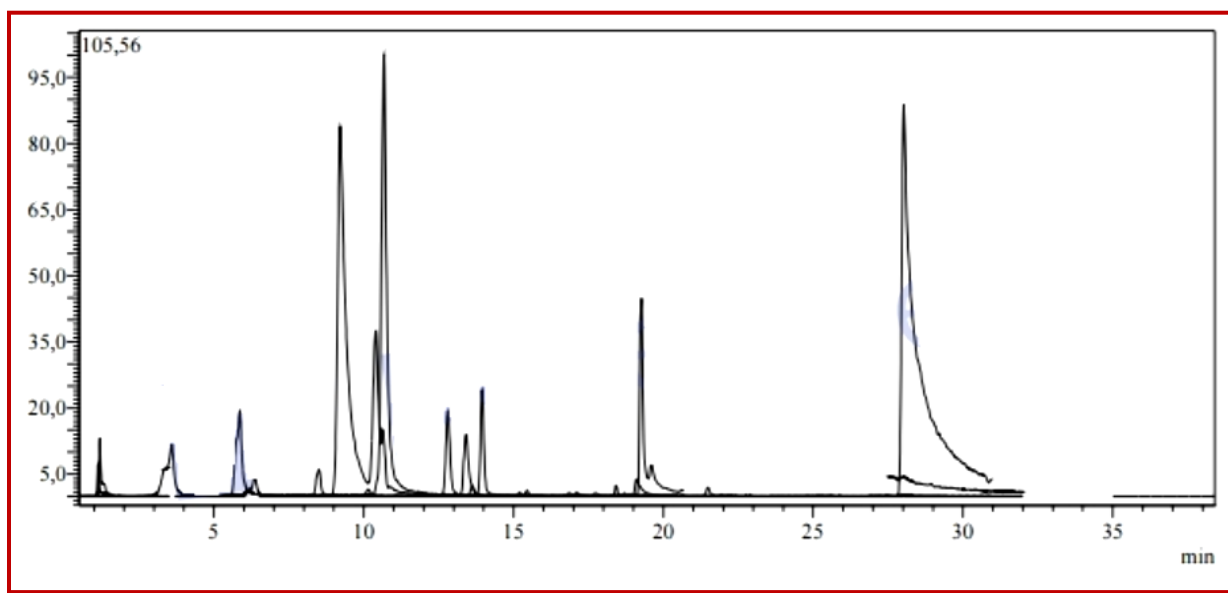


Figure 4: Total ion chromatogram (TIC) of Butanol extract analyzed by the LC-MS method