

Supplementary data

Cytotoxic phenolic constituents from the leaves of *Ehretia asperula*

Dang Dinh Kim^a, Vu Thi Nguyet^a, Ha Xuan Anh^a, Nguyen Thi Thu Trang^a, Nguyen Hong Chuyen^a, Le Mai Huong^b, Tran Thi Hong Ha^b, Do Hai Ho^c, Nguyen Tien Dat^{d*}

Compound **1**: 4-hydroxy-3-[4-(2-hydroxyethyl)-phenoxy]-benzaldehyde

HR-ESI-MS: m/z 259.0975 $[M+H]^+$ (calcd. 259.0970 for $C_{15}H_{15}O_4$). 1H -NMR (500 MHz, CD_3OD): δ_H 9.71 (1H, s, H-7), 7.34 (1H, dd, $J = 8.0, 2.0$ Hz, H-6), 7.32 (1H, d, $J = 2.0$ Hz, H-2), 7.15 (2H, d, $J = 8.0$ Hz, H-3', 5'), 7.04 (1H, d, $J = 8.0$ Hz, H-5), 6.84 (2H, d, $J = 8.0$ Hz, H-2', 6'), 3.71 (2H, t, $J = 7.0$ Hz, H-8'), 2.73 (2H, t, $J = 7.0$ Hz, H-7'). ^{13}C -NMR (125 MHz, CD_3OD): δ_C 131.1 (C, C-1), 118.3 (CH, C-2), 147.2 (C, C-3), 151.8 (C, C-4), 116.1 (CH, C-5), 128.8 (CH, C-6), 158.5 (C, C-1'), 119.5 (CH, C-2', 6'), 131.0 (CH, C-3', 5'), 133.7 (C, C-4'), 193.1 (CH, C-7), 39.4 (CH_2 , C-7'), 64.0 (CH_2 , C-8').

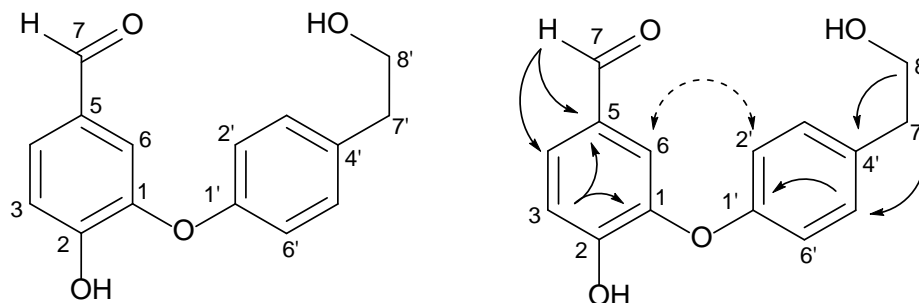


Figure S1. Structure of the compound **1** and key HMBC (\rightarrow) and NOESY ($\langle\text{---}\rangle$) correlations of compound **1**

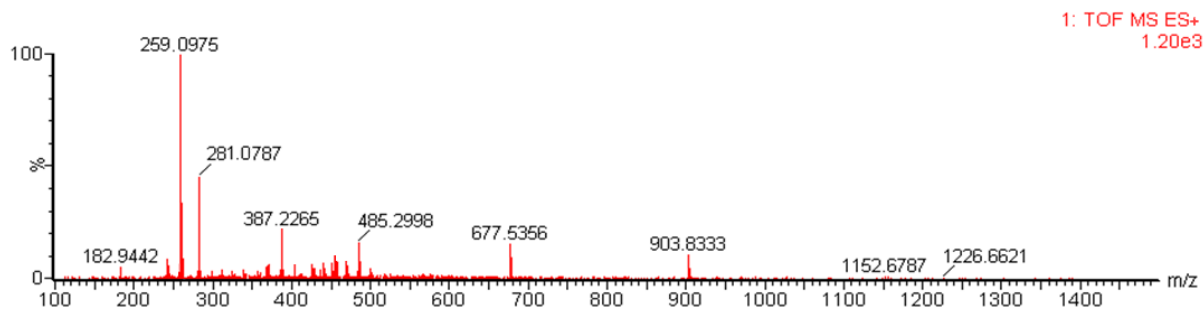


Figure S2. HR-ESI-MS spectrum of compound 1

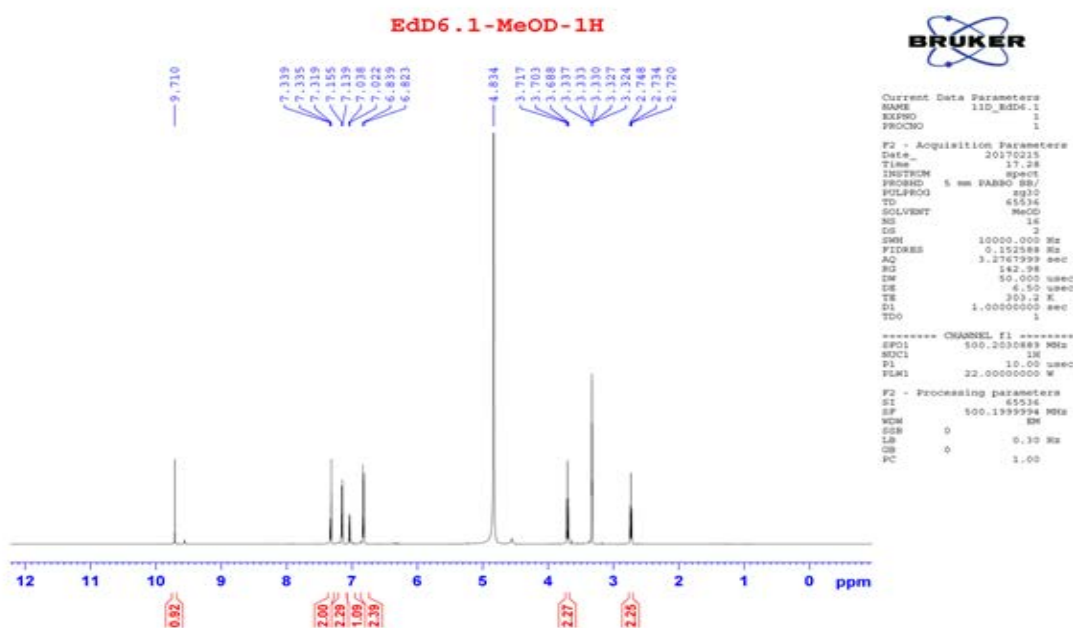


Figure S3. ¹H-NMR spectrum of compound 1

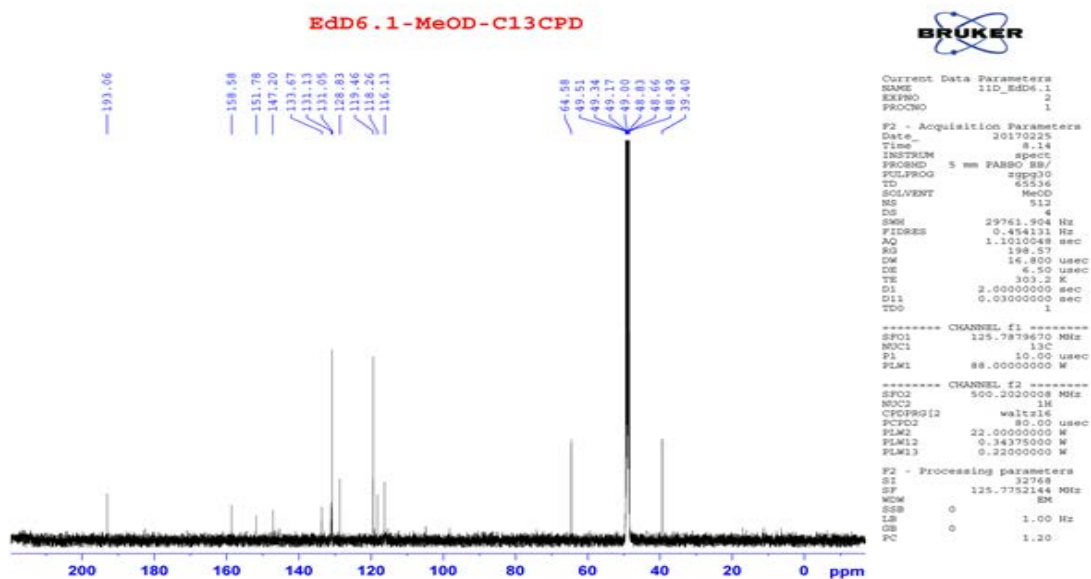


Figure S4. ¹³C-NMR spectrum of compound 1

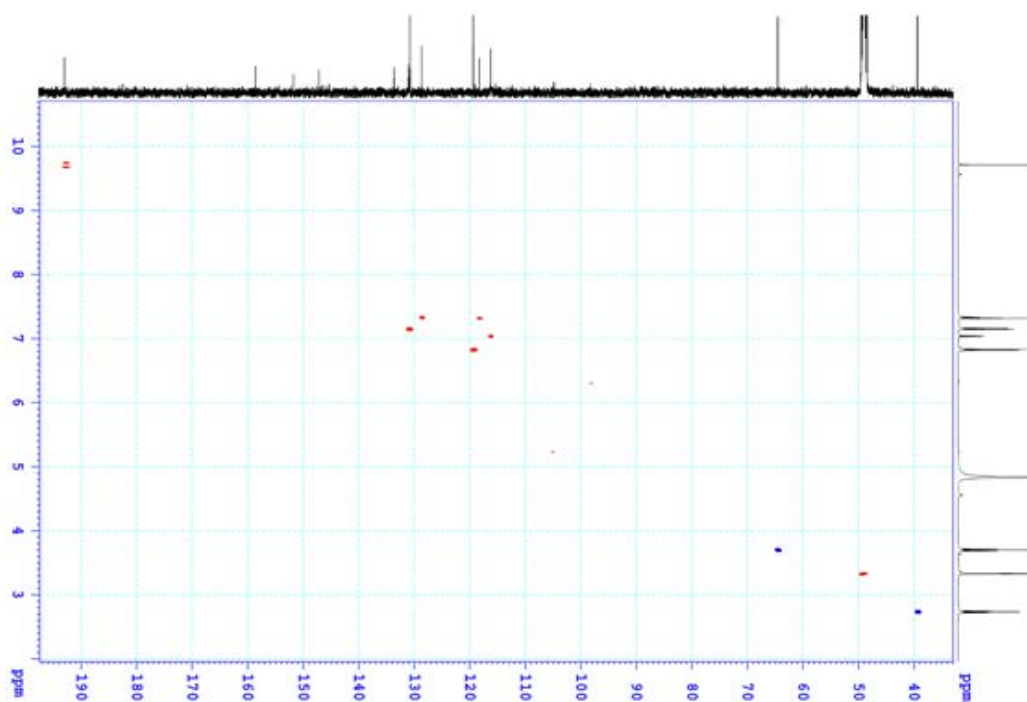


Figure S5. HSQC spectrum of compound **1**

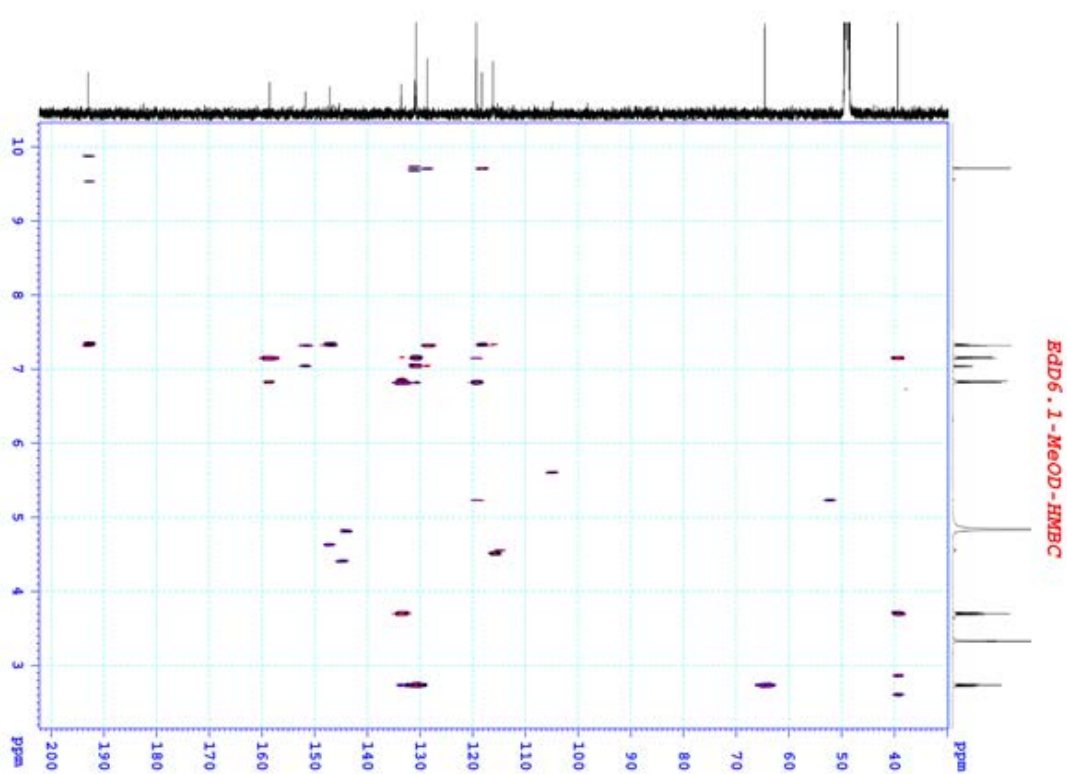


Figure S6. HMBC spectrum of compound **1**

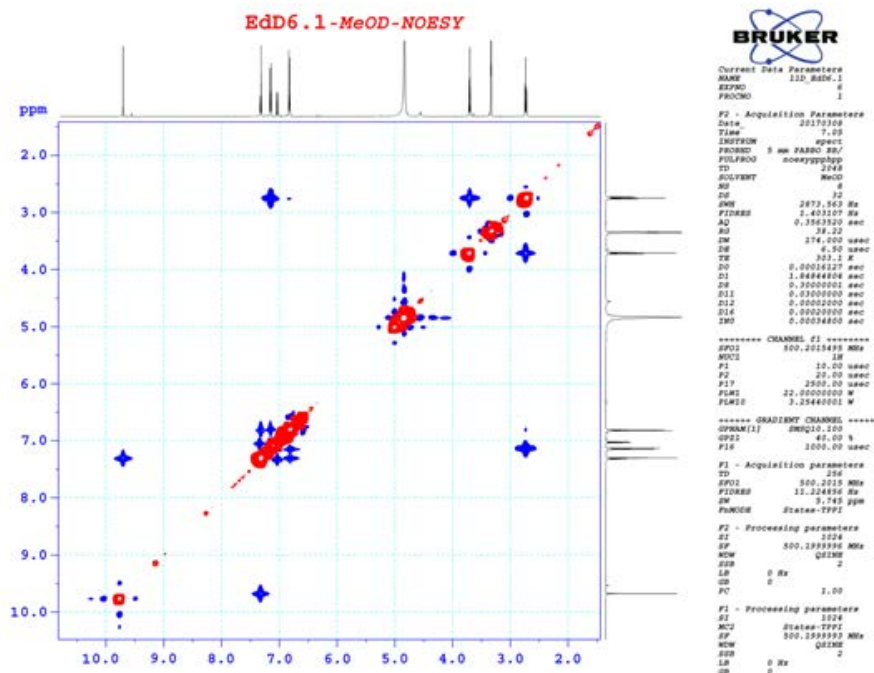
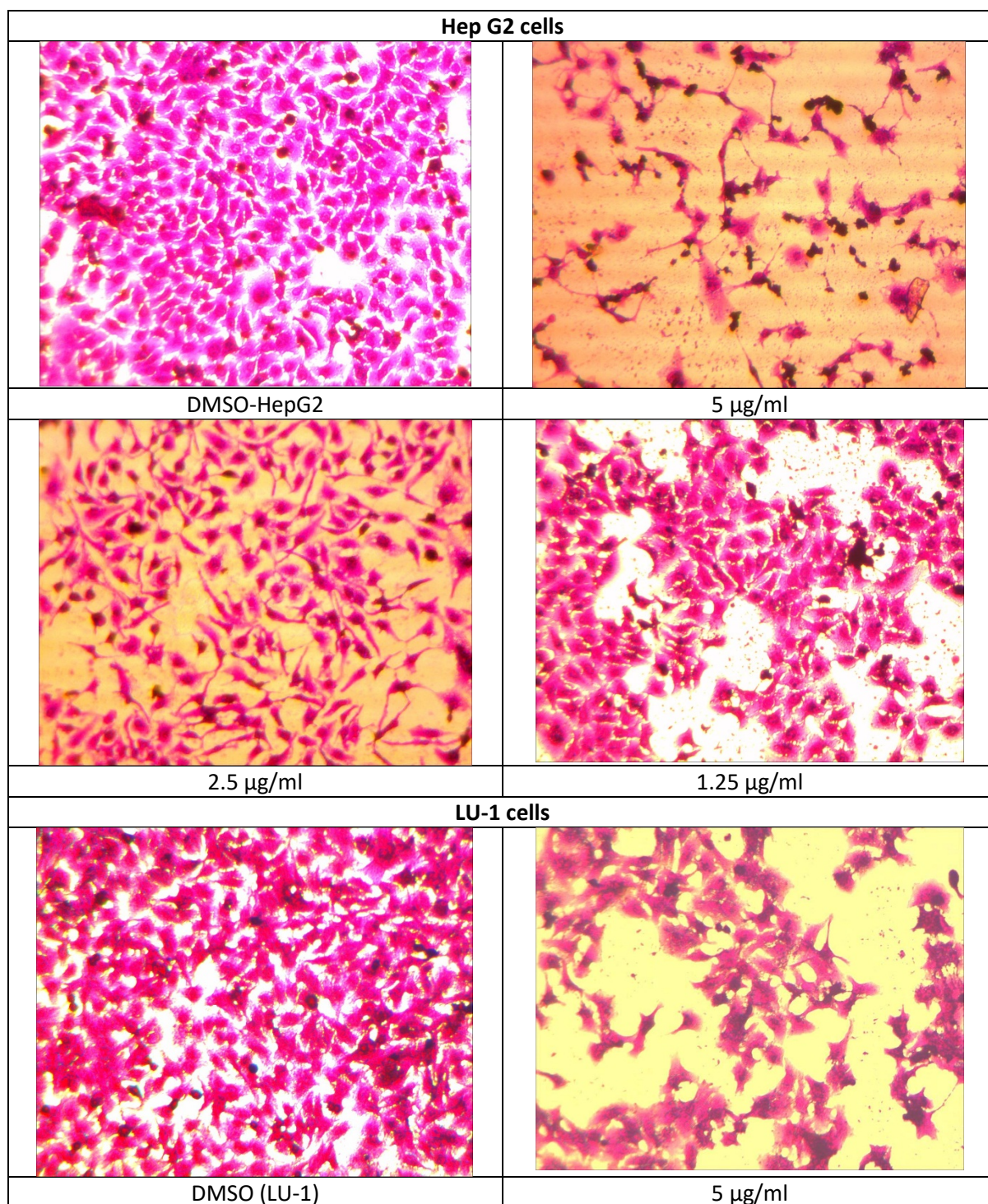
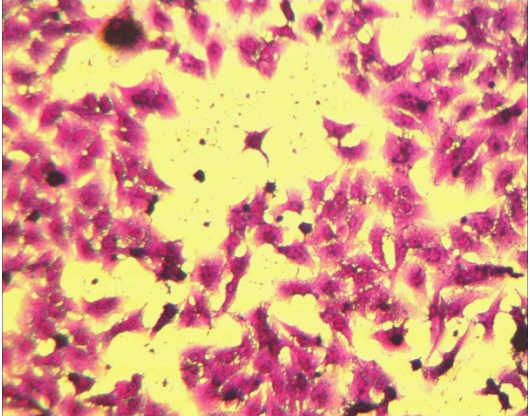
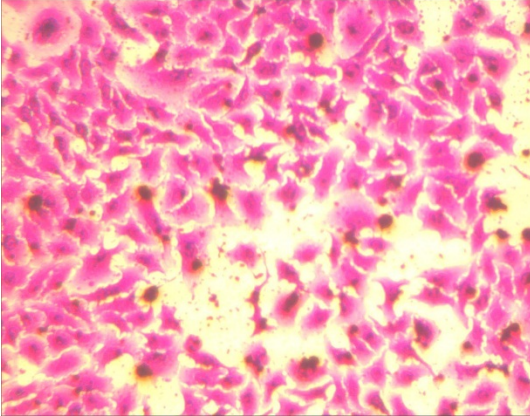
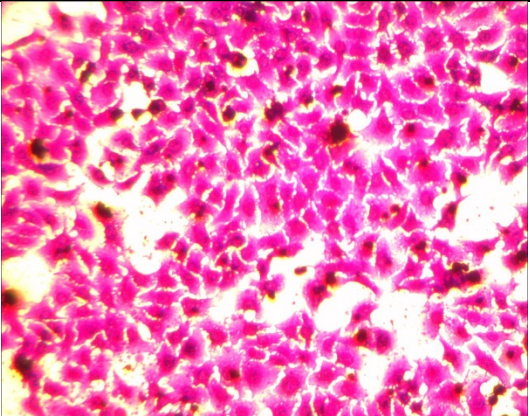
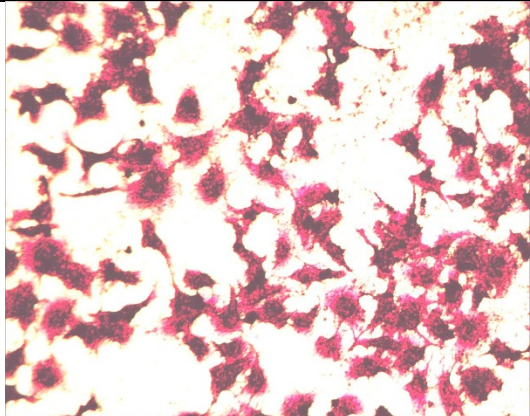
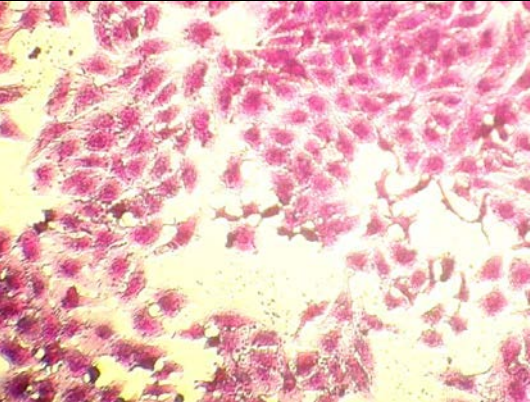
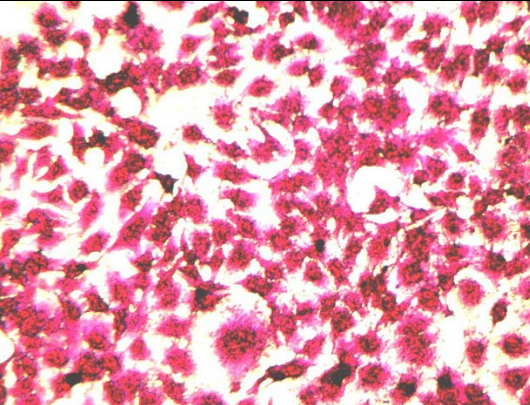
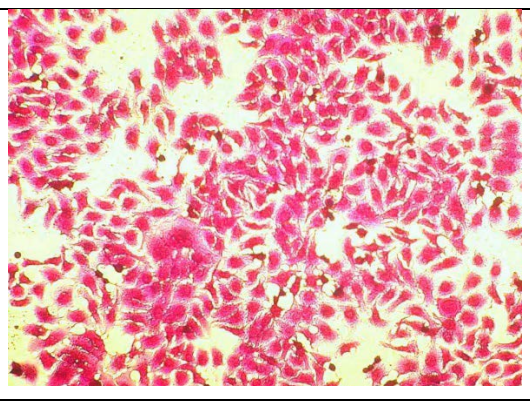
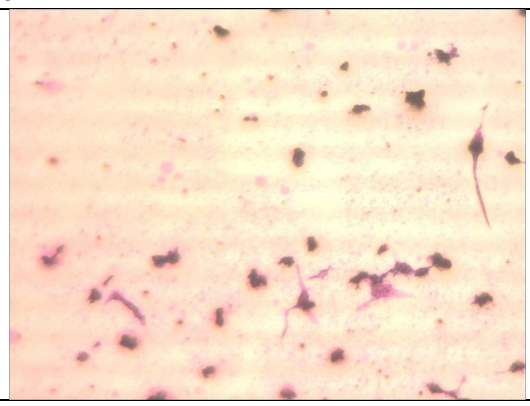
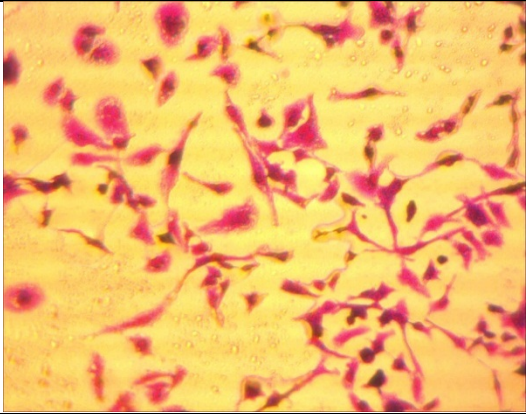


Figure S7. NOESY spectrum of compound 1

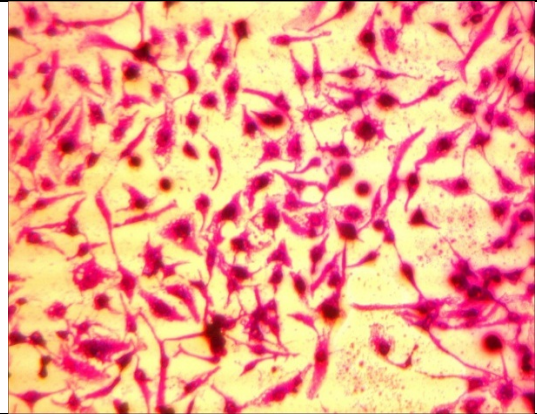
Figure S8. Microscopic images of cancer cells treated by compound 1:



	
2.5 µg/ml	1.25 µg/ml
HeLa cells	
	
DMSO (HeLa)	5 µg/ml
	
2.5 µg/ml	1.25 µg/ml
RD cells	
	
DMSO (RD)	5 µg/ml

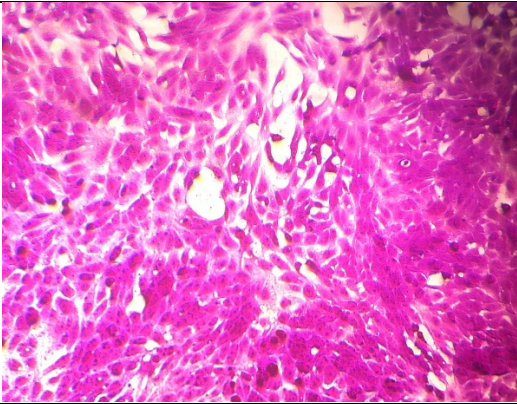


2.5 µg/ml

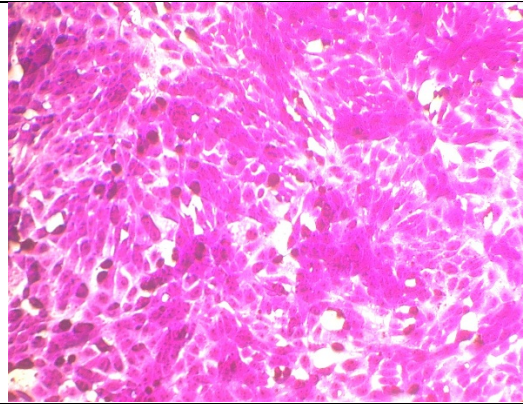


1.25 µg/ml

Vero cells



DMSO (Vero)



5 µg/ml