

FLORISTIC COMPOSITION OF JAHANGIRNAGAR UNIVERSITY CAMPUS - A SEMI-NATURAL AREA OF BANGLADESH

SALEH AHAMMAD KHAN, SHARMIN SULTANA, GAZI MOSHAROF HOSSAIN,
SHAYLA SHARMIN SHETU* AND MD. ABDUR RAHIM

*Plant Systematics and Biodiversity Laboratory, Department of Botany,
Jahangirnagar University, Savar, Dhaka, Bangladesh*

Keywords: Flora; Angiosperms; Semi-natural; Jahangirnagar; Bangladesh.

Abstract

This study represents comprehensive taxonomic information on current floristic composition in the semi-natural campus area of Jahangirnagar University. This study reveals that this campus area harbours a total of 917 species belonging to 574 genera and 145 families of vascular plants. 70.34% of these species are wild and the rest are cultivated/planted. 63.79% of the species are native and 36.21% are exotic to Bangladesh. Pteridophytes and Gymnosperms are represented by 22 and 12 species, respectively, whereas, Angiosperms by 883 species. Magnoliopsida (dicotyledons) and Liliopsida (monocotyledons) are composed of 618 and 265 species, respectively. The family Poaceae with 89 species is the largest, which is followed by Fabaceae with 44 species and Asteraceae with 40 species. Most of the species are herbs (56.16%) and growing in diverse habitats. All species are economically or ecologically important, but mostly as medicinal, ornamental, fodder and forage, fruit, vegetable, timber and fuel wood. The study area houses 15 plant species, previously listed as threatened to Bangladesh. Thus, the study area is floristically rich in respect to its number of plant species belonging to different groups and its size. This area might serve as a campus-based excellent center of biodiversity conservation by strengthening the existing management and adopting necessary policies and strategies.

Introduction

Urbanization is one of the main drivers of ecological, environmental and socio-economical change worldwide (Freitas *et al.*, 2020). It is a central component of land-transformation processes and fundamental changes in land use and landscape pattern around the globe, especially in the developing countries. The consequences of urbanization result in drastic changes to the biodiversity and composition of plant communities and even lead to species extinction (McKinney, 2006; Freitas *et al.*, 2020).

A semi-urban or peri-urban area is a transitional component of urbanization, which is usually resulted through the dynamic and fast transformation of rural land or natural tract into urban land (Meeus and Gulinck, 2008). In many cases, the semi-urban areas are in the vicinity and under influence of urban cores (Cazaux *et al.*, 2007). If a semi-urban area is semi-natural, it may form its own landscapes and may have some intact ecological and biodiversity assemblages that have been substantially modified in their composition, balance, strength or function, largely by human activities.

There are immense benefits of conserving the vegetation of urban or semi-urban areas, especially in scientific, social, economic and environment issues (Hunter, 2007). Open space within such areas has beneficial effects on its microclimate, hydrology, biodiversity and ecological

* Corresponding author. Email: shaylaju819@gmail.com

processes (Goddard *et al.*, 2009). Maintaining biodiversity and natural environments in urban or semi-urban areas, is one of the biggest conservation challenges today (Kowarik, 2011). However, the first key step to achieve this goal is to compile the updated lists of taxa of these areas (Schaminée *et al.*, 2011; Sharrock, 2012).

The campus of Jahangirnagar University (JU) is an eye-pleasing semi-natural semi-urban area in close proximity to Savar upazila town and Dhaka metropolitan city (Fig. 1). Once, this campus area was an integrated part of the Madhupur Tract harbouring the major part of the deciduous 'Sal' (*Shorea robusta*) forest of this country. The original deciduous forest vegetation of this area has been almost replaced by a mixed type of secondary vegetation and plantation forests.

Despite not being completely natural, the habitats and ecosystems of this area has high value in term of its rich biodiversity in its diverse ecological habitats, *viz.* open scrub jungles, grasslands, fallow lands, wetlands, gardens, agricultural lands, and woodlands including the scattered plantation forests and remnants of natural deciduous forest, and the important services it provides. Therefore, conducting studies on the biodiversity of this semi-natural area is necessary to know the extent and status of this natural resource and the trend of its changes under various anthropogenic pressures including urbanization, and to estimate the scope of conservation there.

In this country, the floristic explorations conducted so far are centered on the forested areas (Khan and Huq, 2001; Uddin and Hassan, 2004; Uddin and Hassan, 2010; Rahman *et al.*, 2015; Islam *et al.*, 2016; Rahman, 2017; Rahman *et al.*, 2017; Haque *et al.*, 2018). Studies on the flora of urban or semi-urban areas has long been neglected by the taxonomists, because the ecosystems of these areas have been regarded as highly disturbed and supporting relatively common species only. However, some taxonomic surveys have been completed on or covering some (semi-) urban areas (Alam *et al.*, 2006; Sultana, 2012; Rahman *et al.*, 2013; Tabassum, 2015; Shetu *et al.*, 2018; Khanam *et al.*, 2020; Roy and Khan, 2020). Studies on the flora of few campus areas have also been conducted (Momen *et al.*, 2006; Uddin and Hassan, 2016). But so far no attention has been given to conduct a thorough taxonomic inventory on the flora of JU campus, except the listing of some vascular plant species as a part of the ecological studies (Hossain *et al.*, 1995; Farhana *et al.*, 1997). Therefore, the scope of detail taxonomic study on the flora and assessment of plant diversity of this highly diverse campus area, especially in respect to conservation and management aspects, is still remaining. This study was conducted to complete a comprehensive taxonomic inventory on the vascular flora of JU campus area with highlighting the existing conservation and management aspects.

Materials and Methods

Jahangirnagar University (JU) campus, composed of 282.29 hectares of land, is situated in between 23.8671°-23.8977°E and 90.2588°-90.2731°N, in Savar upazila of Dhaka district, Bangladesh, and 32 km north-west from the Dhaka city along the Dhaka-Aricha highway (Fig. 1). The topography of this area is slightly undulating and composed of red lateritic soil. In the study area, monthly average temperature varies from 30°-41°C, 29°-32°C and 19°-25°C, rainfall ranges from 12.1-154.2 mm, 106.42-350.8 mm and 0-19.5 mm and humidity differs from 42-82%, 74-98% and 38-67% in summer, rainy and winter seasons, respectively according to the records of last one decade (www.worldweatheronline.com). The trend of monthly total rainfall in this area is decreasing in all seasons, whereas that of monthly mean temperature is increasing in summer but slightly decreasing in rainy and winter seasons conforming to the records of last three decades (<http://datalibrary.bmd.gov.bd/maproom/Climatology/Climate>).

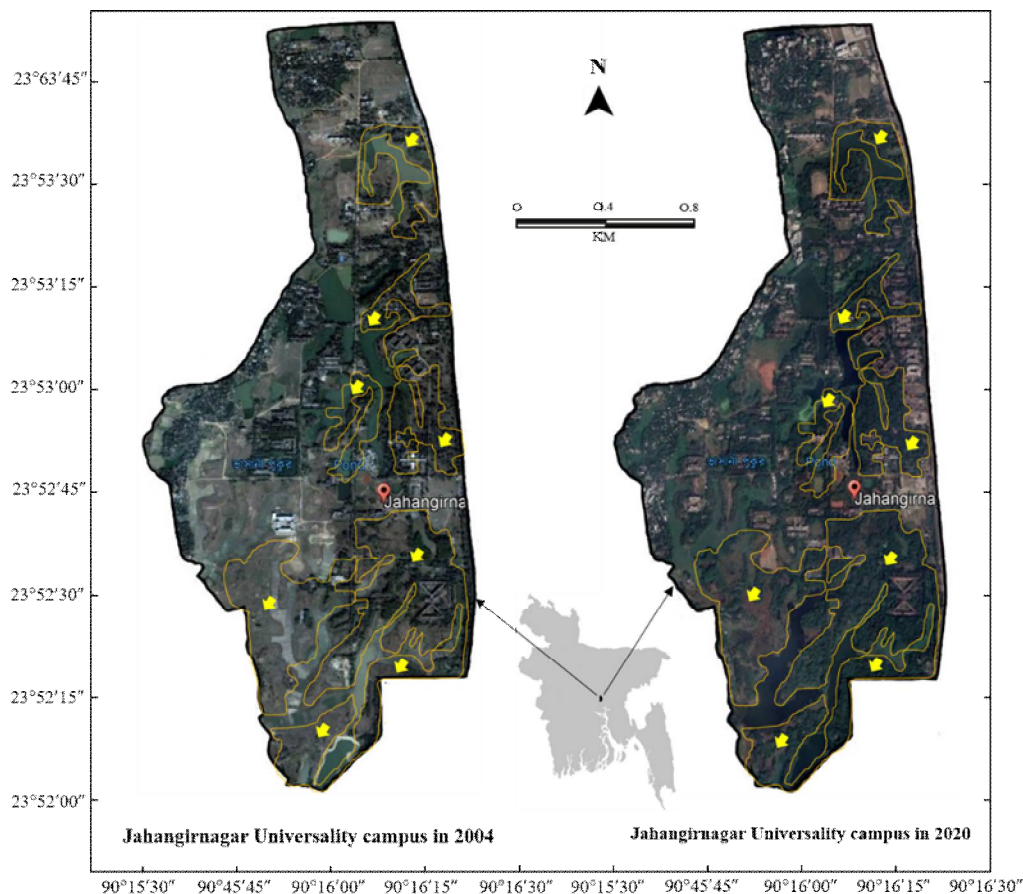


Fig. 1. Images on the study area in the years of 2004 and 2020 showing the change in vegetation cover of major (semi-) natural areas (boundaries with arrow marks).

The study was based on the representative plant specimens randomly collected from JU campus area in different months and seasons during 2009-2020. Besides authors' own collections, the herbarium specimens sporadically collected from this area by different collectors and deposited at Jahangirnagar University Herbarium (JUH) were also used. Taxonomic identification of the specimens was done through expert determination (JUH; Bangladesh National Herbarium, DACB), consulting the relevant taxonomic literatures (Hooker, 1872-1897; Prain, 1903; Siddiqui *et al.*, 2007; Ahmed *et al.*, 2008-2009; Ahmed *et al.*, 2009; Wu *et al.*, 1999-2013), matching with the pertinent and authentically identified voucher specimens housed at DACB and JUH, relevant type images available in the web sites of different international herbaria, such as the Royal Botanic Gardens Kew (K), Muséum National d'Histoire Naturelle France, Paris (P) and the Conservatoire et Jardin botaniques de la Ville de Genève (G), and direct examination at JUH. All voucher specimens are preserved at JUH.

Nomenclatural information was collected from Wu and Raven (1994-2001) and Wu *et al.* (1999-2013), and the nomenclatural data bases (The Plant List, 2013; POWO, 2020; TROPICOS, 2021). The families of Pteridophyta have been arranged following Pichi (1977) and those of Gymnosperms and Angiosperms following Kramer and Green (1990) and Cronquist (1981),

respectively, and the genera and species under each family alphabetically. Information on the nativeness of the species were collected consulting the literatures (Wu and Raven, 1994-2001; Hossain and Pasha, 2001; Siddiqui *et al.* 2007, Ahmed *et al.* 2008-2009, Ahmed *et al.* 2009; Hossain *et al.*, 2009; Wu *et al.*, 1999-2013) and digitized data of POWO (2020).

The common names (Bangla) were extracted from Siddiqui *et al.* (2007), Ahmed *et al.* (2008-2009), Ahmed *et al.* (2009), Pasha and Uddin (2013) and Huq (2019). The major categories of uses were recognized based on literatures (Ghani, 2003; Siddiqui *et al.*, 2007; Ahmed *et al.*, 2008-2009; Ahmed *et al.*, 2009). The images on the study area were downloaded from Google Earth Pro 7.3.3.7786 (www.google.com). Comments on threat, conservation and management aspects have been made based on direct field observation.

Results and Discussion

During this study the campus area of Jahangirnagar University (JU) has been found to harbour a total of 917 species belonging to 574 genera and 145 families of vascular plants. The Pteridophytes, Gymnosperms and Angiosperms of this area are represented by 22, 12 and 883 species under 17, 7 and 549 genera, respectively. The division Magnoliopsida (dicotyledons) is represented by 618 species belonging to 401 genera and 102 families, whereas, the division Liliopsida (monocotyledons) by 265 species under 148 genera and 27 families (Table 1). A total of 45 families are represented by a single genus and a single species each, whereas, 25 families by at least 10 species each. In dicotyledons, Fabaceae with 44 species has been found as the largest family, which is followed by Asteraceae (with 40 species) and Rubiaceae (29 species). In monocotyledons, Poaceae is found as the largest family (with 89 species), which is followed by Cyperaceae (34 species), and Araceae and Arecaceae (24 species each).

In this area, total 515 species (56 %) are found as herbs, which are followed by 212 species of trees (23 %), 140 species of shrubs (15%), 24 species of palms (3%), 14 species of liana (2%) and 12 species of bamboo (1%). The species of Magnoliopsida is composed of 44.17% herbs, 32.20% trees and 21.36% shrubs, whereas that of Liliopsida is consisted of 83.02% herbs, 9.06% palm, 4.53% bamboo, and 1.89% shrubs. All of the species enumerated here are economically or ecologically important. However, total 493 (53.76%) of these species are medicinals, 318 (34.68%) ornamentals, 83 (9.05%) fodders or forages, 62 (6.76%) fruits, 61 (6.65%) vegetables and 46 (5.02%) timbers (Table 1 and Fig. 2). Other species found in this area are economically or ecologically important in different ways, especially as firewood/fuel wood, fibre, handicrafts, spices, soil binder, green manure, dye and oil yielding species.

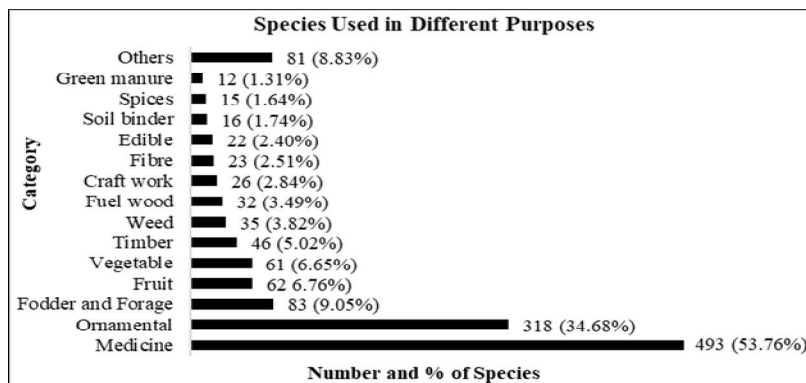


Fig. 2. Economic and ecological importance of the vascular flora of JU campus area.

Among the species of vascular plants, total 586 (63.90%) are native and 331 (36.10%) are exotic to Bangladesh (Wu *et al.*, 1999-2013; Hossain and Pasha, 2001; POWO, 2020). In Pteridophytes, Gymnosperms and Angiosperms, 90.91%, 16.67% and 63.76% species, respectively, are native and 9.09%, 83.33% and 36.24%, respectively, are exotic to Bangladesh. Many of the exotic species (*Acacia auriculiformis*, *Ageratum conyzoides*, *Azolla pinnata*, *Chromolaena odorata*, *Eclipta prostrata*, *Eichhornia crassipes*, *Euphorbia hirta*, *Evolvulus nummularius*, *Hyptis suaveolens*, *Imperata cylindrica*, *Lantana camara*, *Mikania cordata*, *Mimosa pudica*, *Oxalis corniculata*, *Parthenium hysterophorus*, *Phyllanthus niruri*, *Salvinia adnata*, *Sphagneticola trilobata*, *Swietenia mahagoni*, *Tridax procumbens*) are now completely naturalized in this area. Some of the exotic species (*C. odorata*, *I. cylindrica*, *H. suaveolens*, *M. cordata*, *P. hysterophorus*, *S. trilobata*) are found as invasive in the area. In the recent years, about 34 exotic and 24 native species have been introduced in the study area from other regions (Table 1).

In the study area, 56.27% of vascular plant species including all of the 22 species of Pteridophytes and 494 species of Angiosperms are found in wild with natural regeneration, whereas, 26.50% of the species including all of the 12 species of Gymnosperms and 231 species of Angiosperms are recorded as planted and 3.16% of the species, consist of 29 species of Angiosperm, are appeared as cultivated. Besides, 11.45% and 2.62% of the species, comprising 129 species of Angiosperms, are originally planted and cultivated, respectively in the area, but now regenerating there naturally in wild. About 9.92% of 272 planted and cultivated species are seasonal ornamentals but visible in each year in the area. A total of 353 (38.39%) species are distributed in the gardens, 313 (34.13%) in the fallow lands, 284 (30.86%) in roadsides, 199 (21.70%) in the adjacent areas of residential buildings, 173 (18.87%) in grasslands, 165 (17.99%) in the woodlands, 152 (16.58%) in open scrub jungles and 105 (11.45%) in wetlands, and the rest on the lake banks, marginal lands, brick wall or on other plants (Table 1 and Fig. 3).

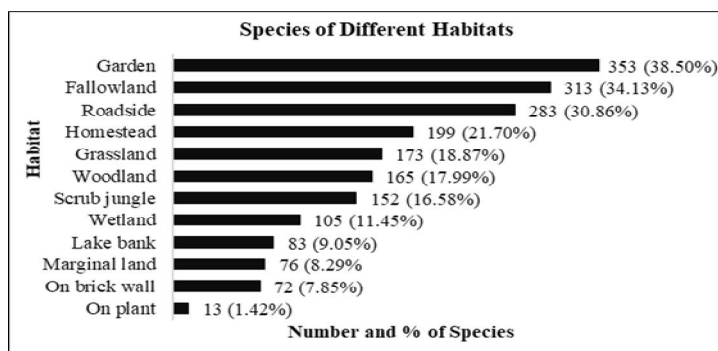


Fig. 3. Distribution of plant species in different habitats of JU campus area.

This campus area is naturally housing 15 plant species, previously listed as threatened to Bangladesh (Table 1; Ara *et al.*, 2013; Khan *et al.*, 2001), three (*Corypha taliera*, *Ochna pumila* and *Oxalis nana*) of which are cited as critically endangered (CR), one (*Phoenix acaulis*) as endangered (EN) and two (*Careya herbacea* and *Cyperus thomsonii*) as vulnerable (VU), which can be considered as the *in situ* conservation of these species. A comparison with the floristic composition of few campus, (semi-)urban, urban, rural and forest areas of Bangladesh, show that the study area harbours relatively higher number of plant species and thus floristically richer in respect to the size of the area (Fig. 4). Based on the results, it is concluded that a small semi-natural area of a semi-urban region like this campus can be rich and diverse in plant species composition if it is maintained properly.

Table 1. List of vascular plants of Jahangirnagar University campus, Savar, Dhaka, Bangladesh.

Scientific name	Bangla name	Habitat	Habit	Origin RSE	Use
PTERIDOPHYTA Schimp.					
Selaginellaceae Willk.					
<i>Selaginella ciliaris</i> (Retz.) Spring	Katagenella	Fl, Rs	Herb, cr, w	Native MAR 2812	M, O
<i>S. vaginata</i> Spring	Nataginella	Fl, Rs	Herb, cr, w	Native MAR 2813	M, O
Ophioglossaceae Martinov					
<i>Ophioglossum reticulatum</i> L.	Sharpa jhibba	Fl, Lb, Wtl	Herb, er; w	Native GMH 5145	M
Salviniaceae Martinov					
<i>Azolla pinnata</i> R. Br.	Khudipana	Wtl	Herb, ff; w	Exotic GMH 5140	Gm
<i>Salvinia adnata</i> Desv.	Chaptakani	Wtl	Herb, ff; w	Exotic GMH 5141	Ap, O
<i>S. cucullata</i> Roxb.	Indur kani	Wtl	Herb, ff; w	Native GMH 5142	Ap, O
<i>S. natans</i> (L.) All.	Bhashan pata	Wtl	Herb, ff; w	Native GMH 5143	Ap, O
Marsileaceae Mirb.					
<i>Marsilea minuta</i> L.	Susni shak	Fl, Lb, Wtl	Herb, cr; w	Native SSS 2169	M, Vg
Lygodiaceae M. Roem.					
<i>Lygodium flexuosum</i> (L.) Sw.	Saralata fern	Fl, Rs, Sj	Herb, vi; w	Native GMH 5144	M
Pteridaceae E.D.M. Kirchn.					
<i>Adiantum capillus-veneris</i> L.	Venichadda	Bw ¹ , Rs, Gr, Hs	Herb, pr; w	Native SSS 2171	O
<i>A. philippense</i> L.	Kalijhat	Gr, Lb	Herb, pr; w	Native GMH 5146	O
<i>Ceratopteris thalictroides</i> (L.) Brongn.	Pani lettuce	Fl, Lb, Wtl	Herb, er; w	Native SSS 2173	O
<i>Hemionitis belangeri</i> (Bory) Christenh.	Belangiri fern	Lb, Rs	Herb, er; w	Native SSS 2172	M
<i>Pteris vittata</i> L.	Imodi pteris	Bw ¹	Herb, pr; w	Native GMH 5147	O
Lindsaeaceae C. Presl ex M.R. Schomb.					
<i>Lindsaea ensifolia</i> Sw.	Lindoli dheki	Fl, Rs	Herb, er; w	Native GMH 5148	O
Polypodiaceae J. Presl & C. Presl					
<i>Drynaria quercifolia</i> (L.) J. Sm.	Pankhiraj	Bw ¹ , Hs, Op	Herb, ep; w	Native GMH 5152	M
<i>Microsorium punctatum</i> (L.) Copel.	Punctasorum fern	Bw ¹ , Op	Herb, ep; w	Native GMH 5153	O
<i>Pyrrosia lanceolata</i> (L.) Farw.	Atashirossi	Op	Herb, ep; w	Native SSS 2175	O
<i>P. nuda</i> (Giesenh.) Ching	Nudarossi	Op	Herb, ep; w	Native GMH 5154	O
Thelypteridaceae Ching ex Pic. Serm.					
<i>Ampelopteris prolifera</i> (Retz.) Copel.	Lombo dheki shak	Fl, MI, Lb	Herb, cr; w	Native GMH 5149	Vg
<i>Thelypteris dentata</i> (Forssk.) E.P. St.John	Datitila	Bw ¹ , Fl, MI, Lb	Herb, cr; w	Native GMH 5150	Vg
Athyriaceae Alston					
<i>Diplazium esculentum</i> (Retz.) Sw.	Dheki shak	Fl, Lb, Rs	Herb, er; w	Native GMH 5151	Vg
GYMNOSPERMAE Prantl					
Cycadaceae Pers.					
<i>Cycas circinalis</i> L.	Nali cycas	Gr, Hs	Tree, m; pl	Exotic GMH 5156	M, O
<i>C. pectinata</i> Buch.-Ham. #	Moni raj	Gr, Hs	Tree, m; pl	Native GMH 5155	M, O
<i>C. revoluta</i> Thunb.	Volu cycas	Gr, Hs	Tree, m; pl	Exotic GMH 5157	O
Zamiaceae Horan.					
<i>Zamia furfuracea</i> L. f. ex Aiton +	Unknown	Gr	Shrub; pl	Exotic MAR 2814	O
<i>Z. pumila</i> L. +	Zamia cycad	Gr	Shrub; pl	Exotic MAR 2815	O

Table 1 contd.

Scientific name	Bangla name	Habitat	Habit	Origin RSE	Use
Podocarpaceae Endl.					
<i>Podocarpus neriifolius</i> D. Don	Bash pata	Gr	Tree, m; pl	Native <i>GMH 5158</i>	M, T
Araucariaceae Henkel & W. Hochst.					
<i>Araucaria heterophylla</i> (Salisb.) Franco	Dipati aurocaria	Gr, Hs, Rs	Tree, l; pl	Exotic <i>SSS 2176</i>	O
Cupressaceae Gray					
<i>Juniperus chinensis</i> L.	China Juniper	Rs	Tree, s; pl	Exotic <i>MAR 2716</i>	O
<i>Thuja plicata</i> Donn ex D. Don	Thuja	Gr, Hs	Tree, l; pl	Exotic <i>SSS 2177</i>	O, T
<i>Platyclusus orientalis</i> (L.) Franco	Thuja jhau	Gr, Hs	Shrub; pl	Exotic <i>SSS 2178</i>	O
Pinaceae Spreng. ex Rudolphi					
<i>Pinus caribaea</i> Morelet	Pine gach	Gr, Rs	Tree, l; pl	Exotic <i>SSS 2179</i>	M, T
<i>P. palustris</i> Mill.	Pine	Gr, Rs	Tree, l; pl	Exotic <i>SSS 2180</i>	M
MAGNOLIOPSIDA Brongn.					
Magnoliaceae Juss.					
<i>Magnolia champaca</i> (L.) Baill. ex Pierre	Champa	Gr, Rs	Tree, l; pl	Native <i>SAK 2022</i>	M, O
<i>M. grandiflora</i> L.	Udoy poddo	Gr, Hs	Tree, m; pl	Exotic <i>SAK 2148</i>	M, O
Annonaceae Juss.					
<i>Annona reticulata</i> L.	Atta	Gr, Hs, Fl	Tree, s; pl-w	Exotic <i>GMH 5007</i>	Fr, Fw
<i>A. squamosa</i> L.	Shorifa	Gr, Hs	Tree, s; pl	Exotic <i>GMH 5002</i>	Fr
<i>Artabotrys hexapetalus</i> (L.f.) Bhandari	Kathali chapma	Gr, Hs	Shrub, sc; pl	Exotic <i>GMH 5005</i>	M, O
<i>Huberantha pendula</i> (Capuron ex G.E. Schatz & Le Thomas) Chaowasku	Weeping debdaru	Rs	Tree, m; pl	Exotic <i>MAR 2530</i>	Fu, O
<i>Miliusa velutina</i> (Dunal) Hook. f. & Thomson	Gandhi gojari	Wl	Tree, l; pl	Native <i>MAR 123</i>	T, M
<i>Polyalthia longifolia</i> (Sonn.) Thwaites	Debdaru	Rs, Wl	Tree, l; pl-w	Exotic <i>MAR 132</i>	O, T
<i>P. suberosa</i> (Roxb.) Thwaites	Barachali	Fl, Wl	Tree, s; w	Native <i>SS 358</i>	Fr, M
Lauraceae Juss.					
<i>Cinnamomum camphora</i> (L.) J. Presl +	Karpur	Gr, Hs	Tree, m; pl	Exotic <i>SAK 2005</i>	Co, M
<i>C. tamala</i> (Buch.-Ham.) T. Nees & Eberm.	Tejpata	Gr, Hs	Tree, m; pl	Native <i>SAK 2049</i>	Co, Sp
<i>C. verum</i> J. Presl	Darchini	Gr, Hs	Tree, m; pl	Exotic <i>SAK 2018</i>	Sp
<i>Litsea glutinosa</i> (Lour.) C.B. Rob.	Kukurchita	Sj, Wl	Tree, m; w	Native <i>SAK 2046</i>	M
<i>L. monopetala</i> (Roxb.) Pers.	Boro-kukurchita	Sj, Wl	Tree, m; w	Native <i>SAK 2047</i>	M
<i>Persea americana</i> Mill. +	Avocado	Gr	Tree, m; pl	Exotic <i>SAK 2004</i>	Fr
Piperaceae Giseke					
<i>Peperomia pellucida</i> (L.) Kunth	Luchi pata	Bw ¹ , Ml, Wl	Herb, pr; w	Exotic <i>SS 425</i>	M
<i>Piper betle</i> L.	Pan	Gr, Hs	Herb, vi; cv	Exotic <i>MAR 2531</i>	M
<i>P. longum</i> L.	Pipul	Fl, Wl	Herb, vi; w	Native <i>SS 426</i>	M
<i>P. nigrum</i> L.	Golmorich	Gr, Hs	Herb, vi; cv	Exotic <i>MAR 2532</i>	Sp
<i>P. sarmentosum</i> Roxb.	Jongli pan	Gr, Sj	Herb, cr, cv-w	Exotic <i>MAR 2533</i>	M
Aristolochiaceae Juss.					
<i>Aristolochia indica</i> L.	Ishwarmul	Sj	Herb, cr; w	Native <i>MAR 140</i>	M
Nelumbonaceae A. Rich.					
<i>Nelumbo nucifera</i> Gaertn.	Poddo	Wtl	Herb, fr; cv-w	Native <i>MAR 2534</i>	M, O
Nymphaeaceae Salisb.					
<i>Nymphaea nouchali</i> Burm. f.	Nil shapla	Wtl	Herb, fr; w	Native <i>SS 397</i>	M, O

Table 1 contd.

Scientific name	Bangla name	Habitat	Habit	Origin RSE	Use
<i>N. pubescens</i> Willd.	Sada shapla	Wtl	Herb, fr; w	Native MAR 134	O, Vg
<i>N. rubra</i> Roxb. ex Andrews	Lal shapla	Wtl	Herb, fr; w	Native SS 427	O, Vg
Ceratophyllaceae Gray					
<i>Ceratophyllum demersum</i> L.	Kantajhanjhi	Wtl	Herb, sm; w	Native MAR 173	M
Ranunculaceae Juss.					
<i>Clematis gouriana</i> Roxb. ex DC.	Chagalbati	Sj	Herb, er; w	Native SS 428	M
<i>Ranunculus sceleratus</i> L.	Palik	Wtl	Herb, er; w	Native MAR 2535	M, Po
Menispermaceae Juss.					
<i>Cocculus hirsutus</i> (L.) W. Theob.	Huyer	Sj	Herb, vi; w	Native SS 191	M
<i>Stephania glabra</i> (Roxb.) Miers	Thandamanik	Sj	Herb, vi; w	Native MAR 126	M
<i>S. japonica</i> (Thunb.) Miers	Akandi manik	Sj	Herb, vi; w	Native MAR 2536	M
<i>Tinospora crispa</i> (L.) Hook. f. & Thomson	Gulanचा	Wl	Herb, vi; w	Native SS 399	M
<i>T. sinensis</i> (Lour.) Merr.	Padma gulanचा	Wl	Shrub, sc; w	Native MAR 2537	M
<i>Tiliacora racemosa</i> Colebr.	Baghlata	Fl, Wl	Shrub, sc; w	Native MAR 2538	M
Cannabaceae Martinov					
<i>Trema orientalis</i> (L.) Blume	Banjiga	Bw ² , Sj, Wl	Tree, m; w	Native SS187	Fw
Moraceae Gaudich.					
<i>Artocarpus altilis</i> (Parkinson ex F.A. Zorn) Fosberg +	Bread fruit	Gr	Tree, m; pl	Exotic MAR 2539	Fr
<i>A. chama</i> Buch.-Ham.	Chapalish	Wl, Rs	Tree, l; pl-w	Native MAR 166	Fr, T
<i>A. heterophyllus</i> Lam.	Kanthal	Wl, Hs	Tree, m; pl-w	Exotic SS 429	Fr, T
<i>A. lakoocha</i> Roxb.	Dewa	Wl, Gr	Tree, m; pl-w	Native MAR 2540	Fr, Fw
<i>Ficus benghalensis</i> L.	Bot	Bw ² , Wl	Tree, l; w	Native SS 430	Fw, Sd
<i>F. benjamina</i> L.	Jiri pakur	Gr	Tree, m; pl	Native MAR 2541	Fw, O
<i>F. elastica</i> Roxb. ex Hornem.	Rubber bot	Gr, Rs	Tree, m; pl	Native MAR 2542	O
<i>F. heterophylla</i> L. f.	Bhuidumur	Sj, Wl	Shrub; w	Native SS 431	Fw, M
<i>F. hispida</i> L. f.	Kakdumur	Bw ² , Sj, Wl	Tree, s; w	Native SS 262	M, Vg
<i>F. pumila</i> L.	Latabot	Bw ¹	Herb, cr; pl-w	Exotic MAR 72	O
<i>F. racemosa</i> L.	Jagdumur	Bw ² , Sj, Fl	Tree, l; w	Native MAR 73	Fr, M
<i>F. religiosa</i> L.	Ashwath	Bw ² , Wl, Sj	Tree, l; w	Native SS 432	O, Sd
<i>F. rumphii</i> Blume	Khiri bot	Wl	Tree, l; w	Native MAR 2543	O, Sd
<i>Morus alba</i> L. +	Shada tut	Hs, Ml, Rs	Tree, s; pl	Exotic MAR 2544	Fr, Sf
<i>Streblus asper</i> Lour.	Sheora	Sj, Wl	Tree, l; w	Native SS 193	Fw, M
Urticaceae Juss.					
<i>Gonostegia hirta</i> (Blume ex Hassk.) Miq.	Unknown	Fl, Ml, Wtl	Herb, er; w	Native MAR 2545	M
<i>Laportea interrupta</i> (L.) Chew	Chotrapatta	Sj, Wl	Herb, er; w	Native MAR 2545	M, Po
<i>Pilea microphylla</i> (L.) Liebm.	Latamaricha	Bw ¹	Herb, pr; w	Exotic MAR 100	M
<i>Pouzolzia zeylanica</i> (L.) Benn.	Kullaruki	Bw ¹ , Sj, Gl	Herb, er; w	Native MAR 165	M
Casuarinaceae R. Br.					
<i>Casuarina equisetifolia</i> L.	Jhau	Gr, Rs	Tree, l; pl	Native SSS 2003	O
Nyctaginaceae Juss.					
<i>Boerhavia diffusa</i> L.	Punarnava	Bw ¹ , Fl, Sj	Herb, pr; w	Native SS 396	M
<i>Bougainvillea buttiana</i> Holtttum & Standl.	Halud baganbilas	Gr, Hs	Shrub, sc; pl	Exotic SSS 2004	O
<i>B. glabra</i> Choisy	Baganbilas	Gr	Shrub, sc; pl	Exotic SSS 2005	O

Table 1 contd.

Scientific name	Bangla name	Habitat	Habit	Origin RSE	Use
<i>B. peruviana</i> Bonpl.	Shuvro baganbilas	Gr, Hs	Shrub, sc; pl	Exotic SSS 2006	O
<i>B. spectabilis</i> Willd.	Shukhbilas	Gr, Hs	Shrub, sc; pl	Exotic SSS 2007	O
<i>Mirabilis jalapa</i> L.	Sandhyamoni	Sj, Gr, Hs	Herb, er; pl-w	Exotic SSS 2008	M, O
Cactaceae Juss.					
<i>Epiphyllum oxypetalum</i> (DC.) Haw.	Night queen	Gr	Herb, pr; pl	Exotic GMH 5161	O
<i>Selenicereus undatus</i> (Haw.) D.R. Hun +	Dragan phal	Gr	Herb, vi; pl	Exotic GMH 5160	Fr
<i>Opuntia ficus-indica</i> (L.) Mill.	Fonimonosha	MI, Rs	Shrub; w	Exotic MAR 2710	He, M
<i>O. stricta</i> (Haw.) Haw.	Nagphana	MI, Rs	Shrub; w	Exotic MAR 2711	He, M
Amaranthaceae Juss.					
<i>Achyranthes aspera</i> L.	Apang	Gl, Fl, Wl	Herb, er; w	Native SS 124	M
<i>Alternanthera paronychioides</i> A. St.-Hil.	Jhuli khata	Gl, Fl, Rs	Herb, pr; w	Exotic MAR 2547	Vg
<i>A. philoxeroides</i> (Mart.) Griseb.	Henchi	Wtl	Herb, fr; w	Exotic SS 353	Vg
<i>A. sessilis</i> (L.) R. Br. ex DC.	Malancha	Bw ¹ , Gl, Fl, Rs	Herb, pr; w	Exotic MAR 174	Vg
<i>Amaranthus blitum</i> L.	Goburanotey	Gl, Rs	Herb, er; w	Exotic SS 355	Vg
<i>A. graecizans</i> L.	Unknown	Gl, Rs	Herb, er; w	Native SS 354	Vg
<i>A. spinosus</i> L.	Kantanotey	Gl, Fl, Rs	Herb, er; w	Exotic SS 120	M, Vg
<i>A. tricolor</i> L.	Lalshak	Hs, Fl, Rs	Herb, er; pl-w	Native MAR 2548	Vg
<i>A. viridis</i> L.	Notey shak	Fl, Rs	Herb, er; w	Exotic SS 133	Vg
<i>Celosia argentea</i> L.	Morog phul	Hs, Rs	Herb, er; pl-w	Exotic SS 356	M, O
<i>Chenopodium album</i> L.	Botua shak	Fl, Gr, Rs	Herb, er; w	Native GMH 2151	M, Vg
<i>Cyathula prostrata</i> (L.) Blume	Shyontula	Gl, Fl, Rs	Herb, pr; w	Native SS 155	M
<i>Deeringia amaranthoides</i> (Lam.) Merr.	Golamohani	Sj	Herb, vi; w	Native MAR 2549	M, Vg
<i>Gomphrena celosioides</i> Mart.	Golkamal	Gl, Fl, Rs	Herb, pr; w	Exotic MAR 2550	M
<i>G. globosa</i> L.	Botam phul	Hs, Rs	Herb, er; pl	Exotic MAR 2551	O
Portulacaceae Juss.					
<i>Portulaca oleracea</i> L.	Boronunia	Bw ¹ , Fl, Rs	Herb, pr; w	Exotic SS 446	M, Vg
<i>P. grandiflora</i> Hook.	Time phul	Hs, Rs	Herb, pr; pl	Exotic GMH 5169	O
<i>P. quadrifida</i> L.	Chhoto nunia	Hs, Rs	Herb, pr; pl-w	Native MAR 2552	O
Basellaceae Raf.					
<i>Basella alba</i> L.	Pui shak	Hs, Fl	Herb, cr; pl-w	Native MAR 2553	Vg
Molluginaceae Bartl.					
<i>Glinus oppositifolius</i> (L.) Aug. DC.	Gima shak	Fl	Herb, pr; w	Native GMH 5017	Vg
<i>Trigastrotheca pentaphylla</i> (L.) Thulin	Julpapra	Fl	Herb, pr; w	Exotic GMH 5019	M
Caryophyllaceae Juss.					
<i>Polycarpon prostratum</i> (Forssk.) Asch. & Schweinf.	Ghima	Gl, Fl	Herb, pr; w	Native SSS 2009	M
Polygonaceae Juss.					
<i>Antigonon leptopus</i> Hook. & Arn.	Valobasha lata	Gr	Herb, vi; pl	Exotic MAR 2554	M
<i>Persicaria barbata</i> (L.) H.Hara	Biskatali	Fl, Wtl	Herb, er; w	Native SSS 2010	M
<i>P. glabra</i> (Willd.) M.Gómez	Lal kukri	Fl	Herb, er; w	Native MAR 124	M
<i>P. hydropiper</i> (L.) Delarbre	Panibishkatali	Fl, Wtl	Herb, er; w	Native SS 270	M
<i>P. lapathifolia</i> (L.) Delarbre	Panimarich	Fl, Wtl	Herb, er; w	Native SS 398	O
<i>P. minor</i> (Huds.) Opiz	Chhoto-bishkatali	Fl	Herb, er; w	Native MAR 135	M
<i>P. orientalis</i> (L.) Spach	Bara panimarich	Fl, Wtl	Herb, er; w	Native MAR 167	M

Table 1 contd.,

Scientific name	Bangla name	Habitat	Habit	Origin RSE	Use
<i>Polygonum effusum</i> Meisn.	Rani phul	Wtl	Herb, er; w	Native SSS 2011	M
<i>P. plebeium</i> R. Br.	Khudi-bishkatali	Fl	Herb, er; w	Native SS 433	M, Vg
<i>Rumex dentatus</i> L.	Bon-palang	Fl	Herb, er; w	Native SSS 2012	M
<i>R. maritimus</i> L.	Dati-palang	Fl	Herb, er; w	Native SSS 2013	M
Dilleniaceae Salisb.					
<i>Dillenia indica</i> L.	Chalta	Wl	Tree, m; pl	Native SS 437	Fr, M
Ochnaceae DC.					
<i>Ochna pumila</i> Buch.-Ham. ex DC. #	Bhui chapa	Wl	Herb, er; w	Native MAR 107	Fr, Po
<i>O. jabotapita</i> L.	Konok chapa	Gr	Tree, s; pl	Native MAR 2555	M
Dipterocarpaceae Blume					
<i>Dipterocarpus turbinatus</i> Gaertn. f.	Teligarjan	Wl, Rs	Tree, l; pl-w	Native SS 438	T
<i>Hopea odorata</i> Roxb.	Telsur	Wl, Rs	Tree, l; pl-w	Native SS 439	T
<i>Shorea robusta</i> Roxb.	Sal	Wl	Tree, l; w	Native SS 440	T
Theaceae Mirb.					
<i>Camellia japonica</i> L.	Camellia	Gr	Shrub; pl	Exotic MAR 2558	O
Clusiaceae Lindl.					
<i>Mesua ferrea</i> L.	Nageshawr	Gr, Rs	Tree, s; pl	Native SS 441	M, O
<i>Garcinia cowa</i> Roxb. ex Choisy ++	Cawphal	Gr, Hs	Tree, m; pl	Native MAR 2556	Fr
<i>G. xanthochymus</i> Hook. f. ex T. Anderson ++	Dephal	Gr	Tree, m; pl	Native MAR 2557	Fr
Hypericaceae Juss.					
<i>Hypericum japonicum</i> Thunb.	Basanta	Fl, Wtl	Herb, pr; w	Native GMH 5010	M
Elaeocarpaceae Juss.					
<i>Elaeocarpus floribundus</i> Blume	Jalpai	Gr, Hs, Wl	Tree, m; pl	Native MAR 2620	Fr, Oy
Sterculiaceae Vent.					
<i>Abroma augusta</i> (L.) L. f.	Ulatkambal	Hs, Sj	Shrub; pl-w	Native SS 434	Fb, M
<i>Helicteres isora</i> L.	Atmora	Sj, Wl	Shrub; w	Native SS 435a	Fb, M
<i>Melochia corchorifolia</i> L.	Tiki-okra	Wl	Shrub; w	Native MAR 151	M
<i>Sterculia foetida</i> L.	Baksho badam	Gr, Rs	Tree, l; pl	Native GMH 5027	Fr, O
<i>S. villosa</i> Roxb.	Udal	Gr, Wl	Tree, l; pl-w	Native GMH 5015	M, Pp
Bombacaceae Kunth.					
<i>Bombax ceiba</i> L.	Shimul	Wl, Sj	Tree, l; w	Native SS 368	Fb, M
Malvaceae Juss.					
<i>Abelmoschus esculentus</i> (L.) Moench	Dherosh	Hg	Herb, er; cv	Native MAR 2561	Vg
<i>A. moschatus</i> Medik.	Mushokdana	Sj, Fl	Herb, er; w	Native SS 443	M
<i>Abutilon indicum</i> (L.) Sweet	Petari	Fl, Rs, Sj	Shrub; w	Native SSS 2015	M
<i>Ceiba pentandra</i> (L.) Gaertn.	Shada shimul	Gr, Hs, Rs	Tree, m; pl	Exotic MAR 2562	Fb, T
<i>Corchorus aestuans</i> L.	Janglipat	Sj	Shrub; w	Native SS 442	Fb, M
<i>C. capsularis</i> L.	Pat	Hg	Herb, er; cv	Native MAR 2563	Fb, Vg
<i>Durio zibethinus</i> L. +	Durian	Gr	Tree, l; pl	Exotic MAR 2564	Fr, M
<i>Grewia asiatica</i> L.	Pholsa	Gr, Wl	Tree, s; pl	Native SS 221	Fr
<i>G. glandulosa</i> Vahl	Pathaka	Sj	Tree, s; w	Exotic SS 291	M, Fw
<i>G. hirsuta</i> Vahl	Kukurbicha	Rs, Sj	Shrub; w	Native SS 357	M
<i>G. serrulata</i> DC.	Panisara	Gr	Tree, s; pl	Native MAR 2559	M, Fw
<i>G. tilifolia</i> Vahl	Raktakussum	Fl, Sj	Tree, m; w	Native SS 406	Fb, M

Table 1 contd.

Scientific name	Bangla name	Habitat	Habit	Origin RSE	Use
<i>Hibiscus mutabilis</i> L.	Sthol poddo	Gr, Hs	Tree, s; pl	Exotic SSS 2016	M
<i>H. rosa-sinensis</i> L.	Joba	Gr, Hs, Rs	Shrub; pl	Exotic SSS 2017	O
<i>H. sabdariffa</i> L.	Chukar	Gr, Hs	Shrub; pl	Exotic SSS 2018	M
<i>H. schizopetalus</i> (Dyer) Hook.f.	Jhumko jaba	Gr, Hs	Shrub; pl	Exotic SSS 2019	O
<i>H. surattensis</i> L.	Ram bhindi	Gr, Hs	Shrub; pl	Native SSS 2020	M
<i>H. syriacus</i> L.	Sada joba	Gr	Shrub; pl	Exotic MAR 2565	O
<i>H. vitifolius</i> L.	Bonkarpas	Sj	Shrub; w	Native MAR 2566	M, O
<i>Malvastrum coromandelianum</i> (L.) Garcke	Clock plant	Fl, Sj	Shrub; w	Exotic MAR 2567	M
<i>Malvaviscus arboreus</i> Cav.	Morich joba	Gr, Hs	Shrub; pl	Exotic MAR 2568	O
<i>Pentapetes phoenicea</i> L.	Bandhuli phul	Gr, Hs	Shrub; pl	Native GMH 5012	M, O
<i>Pterospermum acerifolium</i> (L.) Willd.	Muchkundo	Gr, Wl	Tree, l; pl	Native GMH 5029	M, T
<i>Pterygota alata</i> (Roxb.) R. Br.	Budha narikel	Gr	Tree, l; pl	Native GMH 5037	M, T
<i>Sida acuta</i> Burm. f.	Kureta	Fl, Sj, Rs	Herb, er; w	Native SS 157	M
<i>S. cordata</i> (Burm. f.) Bross. Waalk.	Pitberela	Fl, Sj, Rs	Herb, er; w	Native SS 104	M
<i>S. cordifolia</i> L.	Shet-berela	Fl, Rs	Herb, er; w	Native MAR 2569	M
<i>S. rhombifolia</i> L.	Lal-berela	Fl, Rs	Herb, er; w	Native SS 175	Fb, M
<i>Thespesia populnea</i> (L.) Sol. ex Corrêa	Porosh pipul	Gr, Hs	Tree, s; pl	Native GMH 5025	M
<i>Triumfetta rhomboidea</i> Jacq.	Bon okra	Fl, Wl, Sj	Shrub; w	Native SSS 2014	Fb, M
<i>Urena lobata</i> L.	Atlera	Fl, Sj, Rs	Shrub; w	Native SS 115	Fb, M
Lecythidaceae A. Rich.					
<i>Barringtonia acutangula</i> (L.) Gaertn.	Hijal	Wl, Sj, Wtl	Tree, m; pl-w	Native GMH 5029	M, O
<i>Careya arborea</i> Roxb.	Kumbi	Wl	Tree, l; w	Native MAR 77	M
<i>C. herbacea</i> Roxb. #	Bhuidalim	Sj, Wl	Herb, er; w	Native SS 230	M
<i>Couroupita guianensis</i> Aubl.	Naglingom	Gr, Wl	Tree, l; pl	Exotic GMH 5022	M, Pf
<i>Gustavia superba</i> (Kunth) O. Berg +	Gustav	Gr, Wl	Tree, l; pl	Exotic MAR 2717	O
Bixaceae Kunth					
<i>Bixa orellana</i> L.	Belatihaldi	Gr	Tree, s; pl	Exotic MAR 2570	Dy, M
Passifloraceae Juss. ex Roussel					
<i>Passiflora coccinea</i> Aubl.	Jhumko phul	Gr, Hs	Herb, vi; pl	Exotic SSS 2021	M, O
<i>P. edulis</i> Sims	Passion phal	Gr, Hs	Herb, vi; pl	Exotic SSS 2022	Fr, M
<i>P. foetida</i> L.	Jhumka lata	Sj	Herb, vi; w	Exotic SS 227	Fr, M
Caricaceae Dumort.					
<i>Carica papaya</i> L.	Pepe	Gr, Hs	Tree, s; pl-w	Exotic MAR 2571	Fr, Vg
Cucurbitaceae Juss.					
<i>Benincasa hispida</i> (Thunb.) Cogn.	Chalkumra	Hs	Herb, vi; cv	Exotic MAR 2572	Vg
<i>Citrullus lanatus</i> (Thunb.) Matsum. & Nakai	Tormuj	Hs	Herb, vi; cv-w	Exotic MAR 2573	Fr
<i>Coccinia grandis</i> (L.) Voigt	Telakucha	Bw ¹ , Sj, Wl	Herb, vi; w	Native SS 445	M, Vg
<i>Cucumis melo</i> L.	Kakur	Fl, Hs	Herb, vi; cv-w	Exotic MAR 2574	Fr, Vg
<i>C. sativus</i> L.	Khira	Fl, Hs	Herb, vi; cv-w	Native MAR 2575	Vg
<i>Cucurbita maxima</i> Duchesne	Kumra	Fl, Hs	Herb, vi; cv-w	Exotic MAR 2576	Vg
<i>Diplocyclos palmatus</i> (L.) C. Jeffrey	Mama kola	Fl, Sj	Herb, vi; w	Native SS 444	M
<i>Lagenaria siceraria</i> (Molina) Standl.	Lao	Fl, Hs	Herb, vi; cv-w	Exotic MAR 2577	Vg
<i>Luffa acutangula</i> (L.) Roxb.	Jhinga	Fl, Hs	Herb, vi; cv-w	Native MAR 2578	Vg

Table 1 contd.

Scientific name	Bangla name	Habitat	Habit	Origin RSE	Use
<i>L. cylindrica</i> (L.) M. Roem.	Dhundal	Fl, Hs	Herb, vi; cv-w	Native MAR 2579	Vg
<i>Momordica charantia</i> L.	Korolla	Fl, Hs	Herb, vi; cv-w	Native MAR 2580	Vg
<i>M. dioica</i> Roxb. ex Willd.	Kakrol	Fl, Hs, Sj	Herb, vi; cv-w	Native MAR 2581	Vg
<i>Mukia maderaspatana</i> (L.) M. Roem.	Agmukhi	Bw ¹ , Gl, Sj	Herb, vi; w	Native SS 189	M
<i>Solena amplexicaulis</i> (Lam.) Gandhi	Rakhal soshha	Sj	Herb, vi; w	Native GMH 5032	M
<i>Trichosanthes dioica</i> Roxb.	Potol	Hs	Herb, vi; cv	Native GMH 5047	Vg
<i>T. costata</i> Blume	Banpatol	Sj	Herb, vi; w	Native SS 376	M
<i>T. cucumerina</i> L.	Chichinga	Fl, Hs	Herb, vi; cv	Native MAR 2715	Vg
<i>T. tricuspidata</i> Lour.	Makal	Fl, Hs	Herb, vi; cv-w	Exotic GMH 5003	M
Salicaceae Mirb.					
<i>Flacourtia indica</i> (Burm. f.) Merr.	Bauchi	Bw ¹ , Sj	Shrub; w	Native SS 200	Fr, M
Capparaceae Juss.					
<i>Capparis zeylanica</i> L.	Katai	Sj	Shrub; w	Native SSS 2023	Fr, M
<i>Crateva nurvala</i> Buch.-Ham.	Borun	Wtl	Tree, s; w	Native GMH 5039	Fw, M
Cleomaceae Bercht. & J. Presl					
<i>Cleome houtteana</i> Schtdl.	Hurhuria	Gr, Rs, Fl	Herb, er; pl-w	Exotic SSS 2026	O
<i>C. rutidosperma</i> DC.	Nil hurhurey	Bw ¹ , Fl, Gl, Rs	Herb, er; w	Exotic SSS 2027	M
<i>C. viscosa</i> L.	Halud hurhurey	Bw ¹ , Fl, Gl, Rs	Herb, er; w	Native GMH 5057	M
Brassicaceae Burnett					
<i>Brassica juncea</i> (L.) Czern.	Sarisha	Gr, Hs	Herb, er; cv	Exotic MAR 2581	Oy, Vg
<i>Cardamine cf. flexuosa</i> With.	Unknown	Fl, Gr	Herb, er; w	Exotic MAR 101	M
<i>Rorippa indica</i> (L.) Hiern	Bansarisha	Fl, Gr	Herb, er; w	Native SSS 2024	M
Moringaceae Martinov					
<i>Moringa oleifera</i> Lamk.	Shajna	Hs, Rs	Tree, m; pl	Exotic MAR 168	M, Vg
Sapotaceae Juss.					
<i>Chrysophyllum cainito</i> L.	Star apple	Gr	Tree, m; pl	Exotic MAR 2582	Fr, M
<i>Madhuca longifolia</i> (J. König ex L.) J.F. Macbr.	Mohua	Gr, Rs	Tree, m; pl-w	Native SS 436	M, Oy
<i>Manilkara zapota</i> (L.) P. Royen	Sopheda	Gr, Hs	Tree, m; pl	Exotic GMH 5042	Fr, M
<i>Mimusops elengi</i> L.	Bokul	Gr, Hs	Tree, m; pl-w	Native GMH 5035	M, O
Ebenaceae Gürke					
<i>Diospyros discolor</i> Willd.	Bilati gab	Gr, Hs	Tree, m; pl	Exotic SSS 2025	Fr, M
<i>D. malabarica</i> (Desr.) Kostel.	Deshi gab	Wl	Tree, m; w	Native MAR 169	Fr, M
<i>D. montana</i> Roxb.	Tamal	Gr, Wl	Tree, s; pl-w	Native MAR 105	M, Po
Myrsinaceae R. Br.					
<i>Ardisia solanacea</i> (Poir.) Roxb.	Banjam	Wl	Shrub; w	Native SS 264	M, O
Hydrangeaceae Dumort.					
<i>Hydrangea macrophylla</i> (Thunb.) Ser. +	Hydrangea	Gr	Shrub; pl	Exotic MAR 2583	M
Crassulaceae J. St.-Hil.					
<i>Kalachoe pinnata</i> (Lam.) Pers.	Patharkuchi	Gr, Hs	Herb, er; pl	Exotic MAR 2714	M, O
Rosaceae Juss.					
<i>Eriobotrya japonica</i> (Thunb.) Lindl. +	Lokat	Gr	Tree, s; pl	Exotic MAR 2655	M
* <i>Rosa × centifolia</i> L.	Golap	Gr, Hs	Shrub; cv	Exotic MAR 2656	M, O
<i>R. chinensis</i> Jacq.	Jangli golap	Gr, Hs, Ml	Shrub; pl-w	Exotic MAR 2657	Fn
<i>Rubus armeniacus</i> Focke +	Blackberry	Gr, Hs	Shrub; pl	Exotic GMH 5081	Fr

Table 1 contd.

Scientific name	Bangla name	Habitat	Habit	Origin RSE	Use
* <i>Fragaria × ananassa</i> (Duchesne ex Weston) Duchesne ex Rozier +	Stawberry	Gr. Hs	Herb, cr; cv	Exotic <i>GMH 5091</i>	Fr
<i>F. vesca</i> L. +	Jangli stawberry	Sj	Herb, cr; w	Exotic <i>GMH 5004</i>	M
Mimosaceae R. Br.					
<i>Acacia auriculiformis</i> Benth.	Akashmoni	Bw ² , Fl, Rs, Wl	Tree, l; pl-w	Exotic <i>SS 450</i>	T
<i>A. catechuoides</i> (Roxb.) Benth.	Khoir	Gr	Tree, m; pl	Native <i>MAR 2584</i>	M, Tn
<i>A. concinna</i> (Willd.) DC. ++	Bon babla	Sj, Wl	Shrub, sc; w	Native <i>MAR 2585</i>	Co, M
<i>A. farnesiana</i> (L.) Willd.	Bilatibabla	Wl	Tree, m; pl	Exotic <i>SS 451</i>	Fw, M
<i>A. mangium</i> Willd.	Mangium	Gr, Wl	Tree, l; pl	Exotic <i>SS 452</i>	T
<i>A. nilotica</i> (L.) Delile	Babla	Fl, Rs	Tree, m; w	Native <i>SSS 2028</i>	Gu, M
<i>Adenanthera pavonina</i> L.	Rakta chandan	Gr	Tree, m; pl-w	Native <i>MAR 2586</i>	M, O
<i>Albizia lebbeck</i> (L.) Benth.	Kalo koro	Gr, Rs, Wl	Tree, l; pl-w	Native <i>SSS 2029</i>	T
<i>A. lucidior</i> (Steud.) I.C. Nielsen	Motor koro	Wl	Tree, l; w	Native <i>SSS 2030</i>	T
<i>A. procera</i> (Roxb.) Benth.	Shada/sil koro	Bw ² , Gr, Rs	Tree, l; pl-w	Native <i>SSS 2031</i>	T
<i>A. richardiana</i> (Voigt) King & Prain	Raj siris	Gr, Rs	Tree, l; pl-w	Exotic <i>SSS 2032</i>	M, T
<i>A. saman</i> (Jacq.) Merr.	Shirish	Rs, Wl, Ml	Tree, l; pl-w	Exotic <i>SSS 2033</i>	T, Sd
<i>Calliandra haematocephala</i> Hassk.	Golapi callandra	Gr, Rs	Tree, s; pl	Exotic <i>SSS 2034</i>	O
<i>Leucaena leucocephala</i> (Lam.) de Wit	Ipil-ipil	Fl, Rs, Wl	Tree, l; pl-w	Exotic <i>SSS 2035</i>	Fw, T
<i>Mimosa diplotricha</i> Sauvalle	Baralajjaboti	Sj, Rs	Shrub; w	Exotic <i>SS 393</i>	M
<i>M. pudica</i> L.	Lajjaboti	Gl, Fl, Rs	Herb, pr; w	Exotic <i>SS 110</i>	M
Caesalpinaceae R. Br.					
<i>Bauhinia acuminata</i> L.	Sadakanchon	Gr, Rs	Tree, s; pl-w	Native <i>SS 219</i>	M, O
<i>B. malabarica</i> Roxb.	Kanchon	Gr, Rs	Tree, m; pl	Native <i>MAR 2587</i>	M, O
<i>B. purpurea</i> L.	Rakto kanchon	Gr, Rs	Tree, m; pl	Native <i>MAR 2588</i>	M, O
<i>B. variegata</i> L.	Lal kanchon	Gr, Rs	Tree, s; pl	Native <i>MAR 2589</i>	M, O
<i>Brownea coccinea</i> Jacq.	Pakhi phul	Gr	Tree, s; pl	Exotic <i>MAR 2590</i>	M, O
<i>Caesalpinia digyna</i> Rottler	Amalkuchi	Sj	Shrub, sc; w	Native <i>SS 369</i>	M
<i>Cassia fistula</i> L.	Badarlathi	Gr, Rs	Tree, m; pl-w	Native <i>SS 453</i>	M, O
<i>C. javanica</i> L. ++	Bon sonalu	Gr, Rs	Tree, m; pl	Native <i>SS 454</i>	O
<i>C. renigera</i> Benth. +	Burmese pink shonalu	Gr, Rs	Tree, m; pl	Exotic <i>MAR 2591</i>	O
<i>C. javanica</i> subsp. <i>nodosa</i> (Roxb.) K. Larsen & S.S. Larsen +	Burmese shonalu	Gr, Rs	Tree, m; pl	Exotic <i>MAR 2592</i>	O
<i>Delonix regia</i> (Hook.) Raf.	Krishnachura	Rs	Tree, l; pl-w	Exotic <i>GMH 5067</i>	O
<i>Peltophorum pterocarpum</i> (DC.) K. Heyne	Radha chura	Gr, Rs	Tree, l; pl-w	Exotic <i>GMH 5049</i>	O
<i>Saraca asoca</i> (Roxb.) Willd.	Ashok	Gr, Wl	Tree, m; pl-w	Native <i>SS 370</i>	M, O
<i>S. indica</i> L.	Panshi ashok	Gr, Wl	Tree, m; pl-w	Exotic <i>SSS 2036</i>	M, O
<i>Senna alata</i> (L.) Roxb.	Dadmardan	Fl, Hs, Rs	Shrub; w	Exotic <i>SS 455</i>	M
<i>S. occidentalis</i> (L.) Link	Barakalkesunda	Fl, Rs	Shrub; w	Exotic <i>SS 146</i>	M
<i>S. siamea</i> (Lam.) H.S. Irwin & Barn.	Minjiri	Fl, Gr, Wl	Tree, l; pl-w	Exotic <i>SS 456</i>	Fw, O
<i>S. sophora</i> (L.) Roxb.	Kalkeshunda	Fl, Sj, Rs	Shrub; w	Exotic <i>SS 372</i>	M
<i>S. tora</i> (L.) Roxb.	Araj	Fl, Gl, Rs	Herb, er; w	Exotic <i>SS 139</i>	M
<i>Tamarindus indica</i> L.	Tetul	Gr, Hs, Wl	Tree, l; pl-w	Exotic <i>MAR 2593</i>	Fr, T
<i>Xylia xylocarpa</i> (Roxb.) Taub.	Lohakath	Gr, Wl	Tree, l; pl	Native <i>SSS 2037</i>	T

Table 1 contd.

Scientific name	Bangla name	Habitat	Habit	Origin RSE	Use
Fabaceae Lindl.					
<i>Abrus precatorius</i> L.	Kunch	Sj	Liana; w	Native MAR 171	M
<i>Aeschynomene americana</i> L.	Shola	Fl, Wtl	Herb, er; w	Exotic MAR 384	Fd, Fu
<i>A. indica</i> L.	Bhatshola	Fl, Wtl	Herb, er; w	Native SSS 2038	Gm, M
<i>Alysicarpus vaginalis</i> DC.	Pinnata	Gl	Herb, er; w	Native MAR 136	Fd, Gm
<i>Butea monosperma</i> (Lam.) Taub.	Palash	Gr, Rs, Wl	Tree, m; pl-w	Native MAR 76	Dy, M
<i>Cajanus cajan</i> (L.) Millsp.	Arhar	Fl, Hs	Shrub; pl-w	Exotic SSS 2039	M, Pu
<i>C. scarabaeoides</i> (L.) Thouars	Banurkalki	Sj	Herb, tw; w	Native MAR 170	M
<i>Canavalia gladiata</i> (Jacq.) DC.	Moushim	Hs, Wl	Liana; pl	Native SSS 2040	M, Vg
<i>Centrosema pubescens</i> Benth.	Ban aparajita	Sj	Herb, tw; w	Exotic SS 247	Fo, Gm
<i>Clitoria ternatea</i> L.	Aparajita	Gr, Hs	Herb, tw; pl-w	Exotic SSS 2041	M, O
<i>Codoriocalyx gyroides</i> (Roxb. ex Link) Hassk.	Codaridis	Sj	Shrub; w	Native SS 383	M
<i>Crotalaria calycina</i> Schrank.	Kali jhunjhuni	Fl, Rs	Herb, er; w	Native SS 168	M
<i>C. pallida</i> Aiton	Jhunjhuni	Fl, Rs	Herb, er; w	Native SS 381	Fb, M
<i>C. prostrata</i> Rottler ex Willd.	Shyaon jhunjhuni	Fl, Gl	Herb, pr; w	Native SS 164	M
<i>C. sessiliflora</i> L.	Silai jhunjhuni	Gl	Herb, er; w	Native SS 382	M
<i>Dalbergia sissoo</i> DC.	Sisoo	Gr, Wl, Rs	Tree, l; pl-w	Native SSS 2042	T
<i>D. stipulacea</i> Roxb. ++	Dadbari	Sj, Wl	Shrub, sc; w	Native SSS 2043	Fw, M
<i>D. volubilis</i> Roxb. ++	Angi lata	Sj	Shrub, sc; w	Native SSS 2044	M, Po
<i>Derris scandens</i> (Roxb.) Benth.	Kalia lata	Sj, Wl	Liana; w	Native SS 457	Fb, M
<i>Desmodium gangeticum</i> (L.) DC.	Salpani	Fl, Sj, Wl	Shrub; w	Native MAR 138	M
<i>D. heterophyllum</i> (Willd.) DC.	Bonmotorshuti	Fl, Gl	Herb, pr; w	Native SS 384	Fd, M
<i>Erythrina fusca</i> Lour.	Kantamandar	MI, Rs	Tree, s; pl-w	Native SSS 2045	Fn, M
<i>E. stricta</i> Roxb.	Raktamandar	MI, Rs	Tree, s; pl-w	Native SSS 2046	Fn, M
<i>E. variegata</i> L.	Parijat	Fl, MI, Rs	Tree, s; pl-w	Native SSS 2047	Fn, M
<i>Flemingia macrophylla</i> (Willd.) Kuntze ex Merr.	Barasalpan	Sj, Wl	Shrub; w	Native SS 249	M, Mu
<i>F. stricta</i> Roxb. ex Aiton	Charchara	Fl, Gl	Shrub; w	Native SS 386	M
<i>Gliricidia sepium</i> (Jacq.) Walp. +	Basantamanjuri	MI, Rs	Tree, m; pl	Exotic SS 387	Fd, Gm
<i>Grona heterocarpos</i> (L.) H. Ohashi & K. Ohashi	Kodalia	Sj, Wl	Shrub; w	Native SS 387	Fd, Gm
<i>G. triflora</i> (L.) H. Ohashi & K. Ohashi	Kulalia	Fl, Gl	Herb, pr; w	Native SS 385	M, Sb
<i>Indigofera tinctoria</i> L. ++	Nil	Fl, Gl	Shrub; w	Native SS 138	Dy, M
<i>Medicago polymorpha</i> L.	Medla	Fl, Gl	Herb, pr; w	Exotic SSS 2048	Fo, Gm
<i>Millettia peguensis</i> Ali ++	Tuma	Gr, Rs	Tree, l; pl	Native SSS 2049	O, T
<i>Mucuna pruriens</i> (L.) DC.	Bilaichimti	Sj, Wl	Liana; w	Native SS 252	M, Po
<i>Phyllodium pulchellum</i> (L.) Desv.	Jatsalpani	Wl	Shrub; w	Native MAR 137	M
<i>Pongamia pinnata</i> (L.) Pierre	Karach	Gr	Tree, m; pl-w	Native SSS 2050	Fu, M
<i>Pterocarpus indicus</i> Willd. ++	Padauk	Gr	Tree, l; pl-w	Native SSS 2051	M, O
<i>Pueraria phaseoloides</i> (Roxb.) Benth.	Mugi kunch	Fl, Sj	Liana; w	Native SSS 2052	Fd
<i>Sesbania camabina</i> (Retz.) Pers.	Dhonchi	Fl, Hs, MI	Shrub; cv-w	Native SSS 2053	Fb, Gm
<i>S. grandiflora</i> (L.) Pers.	Bak phul	Gr, Hs, MI	Tree, s; pl	Exotic SSS 2054	Fd, Vg
<i>Spatholobus parviflorus</i> (DC.) Kuntze	Polasia lata	Sj, Wl	Liana; w	Native SSS 2055	Fb, M
<i>Tephrosia candida</i> (Roxb.) DC.	Bilakshani	Fl, Sj	Shrub; w	Native SSS 2056	Gm, M
<i>T. purpurea</i> (L.) Pers.	Bannil	Fl, Sj	Shrub; w	Native MAR 139	Gm, M

Table 1 contd.

Scientific name	Bangla name	Habitat	Habit	Origin RSE	Use
<i>Uraria lagopodioides</i> (L.) DC.	Chakulia	Sj, Wl	Herb; w	Native SS 388	M
<i>Vicia hirsuta</i> (L.) Gray	Masurchana	Gl	Herb, pr; w	Native SS 458	Fd, M
Proteaceae Juss.					
<i>Grevillea robusta</i> A. Cunn. ex R. Br.	Silver oak	Gr	Tree, l; pl	Exotic GMH 5077	Fw, O
Haloragaceae R. Br.					
<i>Myriophyllum tuberculatum</i> Roxb.	Kulabahupatri	Wtl	Herb, sm; w	Native MAR 141	M
Lythraceae J. St.-Hil.					
<i>Ammannia multiflora</i> Roxb.	Acidpatta	Fl, Wtl	Herb, er; w	Native GMH 5087	M
<i>Cuphea hyssopifolia</i> Kunth	Panica	Gr	Herb, er; pl	Exotic GMH 5183	O
<i>Lagerstroemia indica</i> L.	Jarul	Gr, Rs	Tree, s; pl	Native GMH 5052	O, T
<i>L. parviflora</i> Roxb.	Sidha jarul	Gr, Rs	Tree, s; Pl	Native GMH 5059	O, Fw
<i>L. speciosa</i> (L.) Pers.	Jarul	Gr, Ml, Rs	Tree, l; pl-w	Native SS 459	O
<i>Lawsonia inermis</i> L.	Mehedi	Gr, Hs	Tree, s; pl	Exotic GMH 5045	Dy, M
<i>Punica granatum</i> L.	Dalim	Hs	Shrub; pl	Exotic GMH 5087	Dy, Fr
<i>Rotala indica</i> (Willd.) Koehne	Ghurni	Fl, Ml	Herb, er; w	Native GMH 5013	M
<i>R. rotundifolia</i> (Buch.-Ham. ex Roxb.) Koehne	Dim ghurni	Fl, Ml	Herb, cr; w	Native GMH 5001	M
<i>Trapa incisa</i> Siebold & Zucc.	Paniphall	Wtl	Herb, fr, w	Native GMH 5031	Ed, M
Thymelaeaceae Juss.					
<i>Aquilaria malaccensis</i> Lam. #	Agar	Gr, Rs	Tree, l; pl	Native GMH 5023	M, Pf
Myrtaceae Juss.					
<i>Callistemon citrinus</i> (Curtis) Skeels	Bottlebrush	Gr, Rs, Hs	Tree, s; pl	Exotic GMH 5062	O
<i>Corymbia citriodora</i> (Hook.) K.D. Hill & L.A.S. Johnson	Eucalyptus	Gr, Rs	Tree, l; pl	Exotic MAR 2594	Co, M
<i>Eucalyptus camaldulensis</i> Dehnh.	Eucalyptus	Gr, Rs	Tree, l; pl	Exotic GMH 5003	T, O
<i>Myrcia bracteata</i> (Rich.) DC.	Hijlimendi	Sj, Wl	Tree, m; w	Exotic SS 394	Ed, M
<i>Psidium guajava</i> L.	Peyara	Bw ² , Gr, Hs	Tree, s; pl-w	Exotic SS 460	Fr, M
<i>Syzygium aromaticum</i> (L.) Merr. & L.M. Perry	Labongo	Gr	Tree, l; pl	Exotic MAR 2816	M, Sp
<i>S. cumini</i> (L.) Skeels	Kalojam	Rs, Wl, Hs	Tree, l; pl-w	Native SS 461	Fr, T
<i>S. fruticosum</i> DC.	Khudi jam	Bw ² , Sj, Wl	Tree, m; w	Native SS 266	Fr, M
<i>S. grande</i> (Wight) Walp.	Dhaki jam	Wl	Tree, l; pl	Native SS 176	T
<i>S. jambos</i> (L.) Alston	Golapjam	Gr	Tree, l; pl	Native GMH 5033	Fr, M
<i>S. nervosum</i> A.Cunn. ex DC.	Botijam	Sj	Tree, s; w	Native GMH 5055	M
<i>S. samarangense</i> (Blume) Merr. & L.M. Perry	Jamrul	Gr, Hs	Tree, l; pl	Native MAR 2595	Fr
Onagraceae Juss.					
<i>Ludwigia adscendens</i> (L.) H. Hara	Keshordam	Wtl	Herb, fr; w	Native SS 462	M
<i>L. hyssopifolia</i> (G. Don) Exell	Panipalong	Bw ¹ , Fl, Ml, Wtl	Herb, er; w	Exotic SS 463	M
<i>L. perennis</i> L.	Amorkura	Fl, Gl	Herb, er; w	Native SS 465	M
Melastomataceae Juss.					
<i>Melastoma malabathricum</i> L.	Ban tejmeta	Fl, Sj, Wl	Shrub; w	Native SS 166	M
Combretaceae R. Br.					
<i>Combretum grandiflorum</i> G. Don	Brush phul	Gr, Hs	Liana; pl	Exotic MAR 2596	M, O
<i>C. indicum</i> (L.) De Filippi	Madobi lata	Gr, Hs	Liana; pl	Native MAR 2597	M, O

Table 1 contd.

Scientific name	Bangla name	Habitat	Habit	Origin RSE	Use
<i>Terminalia arjuna</i> (Roxb. ex DC.) Wight & Arn.	Arjun	Gr, Rs	Tree, l; pl-w	Native SS 466	M
<i>T. bellirica</i> (Gaertn.) Roxb.	Bohera	Gr, Rs, Wl	Tree, l; pl-w	Native SS 467	M
<i>T. catappa</i> L.	Kathbadam	Gr, Rs	Tree, l; pl-w	Native SS 468	Ed, M
<i>T. chebula</i> Retz.	Horitoki	Gr, Rs, Wl	Tree, l; pl-w	Native SS 469	M
Cornaceae Bercht. ex J. Presl					
<i>Alangium salviifolium</i> (L.f.) Wangerin	Ankura	Gr, Sj	Tree, m, pl	Native MAR 2718	M, Fu
Olacaceae R. Br.					
<i>Olax acuminata</i> Wall. ex Benth.	Capsul gach	Sj, Wl	Shrub; w	Native MAR 108	M
<i>O. nana</i> Wall. ex Benth. #	Unknown	Sj, Wl	Shrub; w	Native MAR 2598	M
Santalaceae R. Br.					
<i>Santalum album</i> L.	Shet chandan	Gr	Tree, s; pl	Exotic MAR 2719	Co
Loranthaceae Juss.					
<i>Dendrophthoe falcata</i> (L. f.) Etting.	Bajrangi	Op	Shrub, ps; w	Native SS 470	M
<i>Macrosolen cochinchinensis</i> (Lour.) van Tiegh.	Renda	Op	Shrub, ps; w	Native SS 471	M
<i>Scurrula parasitica</i> L.	Porgacha	Op	Shrub, ps; w	Native GMH 5072	M
<i>Viscum monoicum</i> Roxb. ex DC.	Bhanda	Op	Herb, ps; w	Native GMH 5069	M, Po
Euphorbiaceae Juss.					
<i>Acalypha ciliata</i> Forssk.	Unknown	Fl, Sj	Herb, er; w	Native MAR 2599	M
<i>A. indica</i> L.	Muktajhuri	Bw ¹ , Fl, Gl, Rs	Herb, er; w	Native SS 472	M, Po
<i>Chrozophora plicata</i> (Vahl) A Juss. ex Spreng.	Khudiokra	Fl, Gl	Herb, er; w	Exotic SS 473	M
<i>Codiaeum variegatum</i> (L.) Rumph. ex A. Juss.	Patabahar	Gr	Shrub; pl	Exotic MAR 2603	O
<i>Croton bonplandianus</i> Baill.	Bandhone	Fl, Gl, Rs	Herb, er; w	Exotic SS 240	M
<i>C. caudatus</i> Geiseler	Nanvantui	Fl, Sj, Rs	Shrub, sc; w	Native MAR 116	Fu, M
<i>Euphorbia antiqorum</i> L.	Bajvaran	Gr, Hs, Ml	Shrub; pl-w	Native MAR 2604	M
<i>E. heterophylla</i> L.	Baradudhia	Fl, Gl, Rs	Herb, pr; w	Exotic MAR 2605	M
<i>E. hirta</i> L.	Dudhia	Bw ¹ , Fl, Gl, Rs	Herb, pr; w	Exotic SS 127	M
<i>E. milii</i> Des Moul.	Kata mukut	Gr	Shrub; pl	Exotic MAR 2720	O
<i>E. neriifolia</i> L.	Manosha sij	Gr, Hs, Ml	Shrub; pl-w	Exotic GMH 5097	O, M
<i>E. pulcherrima</i> Willd. ex Klotzsch	Lalpata	Gr, Hs, Rs	Shrub; pl	Exotic GMH 5065	O
<i>E. tithymaloides</i> L.	Rangchita	Gr, Hs	Herb, er; pl-w	Exotic GMH 5082	M
<i>E. thymifolia</i> L.	Swetkerui	Fl, Gl, Rs	Herb, pr; w	Exotic MAR 80	M
<i>Excoecaria cochinchinensis</i> Lour.	Lailimajnu	Gr, Rs	Shrub; pl	Exotic GMH 5079	O
<i>Hevea brasiliensis</i> (Willd. ex A.Juss.) Müll.Arg.	Rubber	Gr	Tree, l; pl	Exotic MAR 2606	M, R
<i>Jatropha gossypifolia</i> L.	Lalbherenda	Fl, Rs	Shrub; w	Exotic SS 241	M
<i>J. integerrima</i> Jacq.	Jayoti	Fl, Rs	Shrub; w	Exotic MAR 2607	O
<i>J. podagrica</i> Hook.	Bagbherenda	Gr, Rs	Shrub; pl	Exotic MAR 2608	O
<i>Mallotus nudiflorus</i> (L.) Kulju & Welzen	Medda	Wl	Tree, l; w	Native SS 475	M, T
<i>M. philippensis</i> (Lam.) Müll.-Arg.	Sinduri	Sj, Wl	Shrub; w	Native SS 476	Dy, M
<i>M. repandus</i> (Willd.) Müll. Arg.	Gunti	Sj, Wl	Shrub, sc; w	Native MAR 2609	M
<i>Manihot esculenta</i> Crantz +	Kasava	Gr, Hs	Tree, s; pl	Exotic SSS 2058	Ed, M
<i>Ricinus communis</i> L.	Bherenda	Fl, Hs	Shrub; w	Exotic SS 477	M, Oy

Table 1 contd.

Scientific name	Bangla name	Habitat	Habit	Origin RSE	Use
<i>Suregada multiflora</i> (A. Juss.) Baill. ++	Ban naringa	Wl	Tree, s; w	Native MAR 101	Fw, M
<i>Tragia hispida</i> Willd.	Bichuti	Sj	Herb, er; w	Native MAR 102	M
Phyllanthaceae Martinov					
<i>Antidesma acidum</i> Retz.	Multa	Sj, Wl	Shrub; w	Native MAR 160	Ed, M
<i>A. bunius</i> (L.) Spreng.	Banshialbuka	Gr	Tree, s; pl	Native MAR 2600	Ed, M
<i>A. ghaesembilla</i> Gaertn.	Khudijam	Sj, Wl	Tree, s; w	Native MAR 2601	Fr, M
<i>A. montanum</i> Blume	Shialbuka	Sj, Wl	Tree, s; w	Native SS 486	Ed, M
<i>Aporosa octandra</i> (Buch.-Ham. ex D. Don) Vickery	Patkhorolla	Sj, Wl	Tree, s; w	Native SS 293	Dy, Fw
<i>Baccaurea ramiflora</i> Lour.	Latkan	Gr, Hs	Tree, m; pl-w	Native SSS 2061	Fr, M
<i>Breynia vitis-idaea</i> (Burm. f.) Fisch.	Vitasalpoti	Bw ¹ , Sj, Wl	Tree, s; w	Native SS 239	M
<i>Bridelia stipularis</i> (L.) Blume	Kalasi kori	Sj, Wl	Shrub; w	Native SS 186	Ed, M
<i>B. tomentosa</i> Blume	Khoi	Sj, Wl	Tree, s; w	Native MAR 2602	Ed, M
<i>Flueggea virosa</i> (Roxb. ex Willd.) Royle	Khaukra	Sj, Wl	Shrub; w	Native SS 379	M
<i>Phyllanthus acidus</i> (L.) Skeels	Arboroi	Gr, Hs	Tree, s; pl	Exotic SSS 2059	Fr, M
<i>P. amarus</i> Schumach. & Thonn.	Bhuiamla	Bw ¹ , Fl, Gl	Herb, er; w	Exotic SS 178	M
<i>P. emblica</i> L.	Amloki	Gr, Hs, Rs	Tree, s; pl	Native SSS 2060	Fr, M
<i>P. multilocularis</i> (Roxb. ex Willd.) Müll. Arg.	Paniatori	Fl, Sj	Shrub; w	Native SS 474	M
<i>P. niruri</i> L.	Bhuiamla	Bw ¹ , Fl, Gl	Herb, er; w	Exotic MAR 95	M
<i>P. reticulatus</i> Poir.	Chitki	Bw ¹ , Fl, Sj	Shrub; w	Native SS 197	Fu, M
<i>P. urinaria</i> L.	Kalochitki	Fl, Gl	Herb, er; w	Native MAR 96	M
<i>P. virgatus</i> G. Forst.	Sarnapati	Bw ¹ , Fl, Gl	Herb, er; w	Native SS 244	M
Putranjivaceae Endl.					
<i>Putranjiva roxburghii</i> Wall.	Putronjiba	Gr, Rs	Tree, l; pl	Native GMH 5089	M, T
Rhamnaceae Juss.					
<i>Gouania leptostachya</i> DC.	Harjengagota	Sj, Wl	Shrub, sc; w	Native MAR 81	M
<i>Sarcomphalus mauritianus</i> (Lam.) Raf.	Boroi	Gr, Hs, Wl	Tree, m; pl-w	Native SS 220	Fr, Fw
<i>Zizyphus oenoplia</i> (L.) Mill.	Bonboroi	Sj, Wl	Shrub, sc; w	Native SS 225	Fu, M
<i>Z. rugosa</i> Lam.	Jangliboroi	Sj, Wl	Shrub; w	Native MAR 102	M
Leeaceae Dumort.					
<i>Leea asiatica</i> (L.) Ridsdale	Banchalita	Sj, Wl	Shrub; w	Native SS 389	M
Vitaceae Juss.					
<i>Ampelocissus latifolia</i> (Roxb.) Planch.	Angur lata	Bw ² , Wl	Herb, vi; w	Native SS 478	M
<i>Causonis trifolia</i> (L.) Mabb. & J. Wen	Amal lata	Bw ¹ , Sj, Wl	Herb, vi; w	Native SS 479	Fd, M
<i>Cissus adnata</i> Roxb.	Bhatia lata	Sj, Wl	Herb, vi; w	Native MAR 274	M
<i>C. quadrangularis</i> L.	Harjora	Gr, Fl, Hs	Herb, vi; w	Native MAR 2610	M
<i>C. repens</i> Lam.	Marmaria pata	Sj, Wl	Herb, vi; w	Native SS 480	M
<i>Tetrastigma angustifolium</i> (Roxb.) Planch.	Nekungriubi	Sj, Wl	Herb, vi; w	Native SS 294	M
Malpighiaceae Juss.					
<i>Hiptage benghalensis</i> (L.) Kurz	Madhabi lata	Gr, Hs	Liana; pl	Native SSS 2001	O
<i>Malpighia coccigera</i> L.	Kantamalpia	Gr	Shrub; pl	Exotic SSS 2002	O
Polygalaceae Hoffmanns. & Link					
<i>Polygala erioptera</i> DC.	Teradudhi	Fl, Gl	Herb, pr; w	Native MAR 110	M

Table 1 contd.

Sapindaceae Juss.						
<i>Cardiospermum halicacabum</i> L.	Lataphutki	Fl, Sj	Herb, vi; w	Native SS 481	M	
<i>Dimocarpus longan</i> Lour. ++	Kathlitchu	Gr, Hs	Tree, m; pl	Native MAR 2611	Fr	
<i>Lepisanthes rubiginosa</i> (Roxb.) Leenh.	Horina	Fl, Gr, Wl	Tree, s; w	Native GMH 5075	Fr, Fw	
<i>Nephelium lappaceum</i> L. +	Rambutan	Gr	Tree, m; pl	Exotic MAR 2612	Fr	
<i>Litchi chinensis</i> Sonn.	Litchu	Gr, Hs	Tree, m; pl	Exotic SSS 2062	Fr	
<i>Sapindus saponaria</i> L. +	Ritha	Gr	Tree, s; pl	Exotic GMH 5043	M, Co	
<i>Schleichera oleosa</i> (Lour.) Merr. ++	Kusum gach	Gr	Tree, s; pl	Native MAR 2613	Dy, M	
Burseraceae Kunth						
<i>Canarium resiniferum</i> Bruce ex King ++	Dhup	Gr, Wl	Tree, l; pl	Native MAR 2721	M	
Anacardiaceae R. Br.						
<i>Anacardium occidentale</i> L.	Kaju badam	Gr, Hs, Rs	Tree, l; pl	Exotic MAR 2614	Fr	
<i>Lannea coromandelica</i> (Houtt.) Merr.	Jiga	Bw ² , Fl, Ml, Wl	Tree, s; w	Native GMH 5053	Fn, Gu	
<i>Mangifera indica</i> L.	Aam	Gr, Hs, Wl	Tree, l; pl-w	Exotic SS 482	Fr, T	
<i>Spondias dulcis</i> Parkinson	Amrah	Gr, Hs	Tree, l; pl	Exotic SSS 2063	Fr	
Meliaceae Juss.						
<i>Azadirachta indica</i> A. Juss.	Neem	Hs, Rs, Wl	Tree, m; pl-w	Native SS 391	M	
<i>Aphanamixis polystachya</i> (Wall.) R. Parker	Pithraj	Hs, Wl	Tree, m; w	Native SSS 2064	M, Oy	
<i>Chukrasia tabularis</i> A.Juss.	Chikrassi	Gr, Wl	Tree, l; pl	Native SSS 2065	Dy, T	
<i>Dysoxylum excelsum</i> Blume	Ramta rata	Gr,	Tree, l; pl	Native MAR 2615	T, M	
<i>Khaya anthotheca</i> (Welw.) C. DC. +	Lombu	Gr, Rs	Tree, l; pl	Exotic MAR 2616	T	
<i>Melia azedarach</i> L.	Goranim	Rs, Wl	Tree, m; pl	Native GMH 5085	T, M	
<i>Swietenia macrophylla</i> King	Bara Mehagani	Gr, Hs, Rs	Tree, l; pl-w	Exotic MAR 2617	T	
<i>S. mahagoni</i> (L.) Jacq.	Mehagani	Gr, Hs, Rs	Tree, l; pl-w	Exotic MAR 143	T	
Rutaceae Juss.						
<i>Aegle marmelos</i> (L.) Corrêa	Bel	Hs, Wl	Tree, m; pl-w	Native SS 403	Fr, M	
<i>Feronia limonia</i> (L.) Swingle	Kadbel	Gr, Hs	Tree, m; pl	Native SSS 2066	Fr	
<i>Citrus aurantiifolia</i> (Christm.) Swingle	Lebu	Gr, Hs	Shrub; pl	Exotic SSS 2067	Fr	
<i>C. hystrix</i> DC. ++	Satkora	Gr	Tree, s; pl	Native MAR 2618	Fr, M	
<i>C. limon</i> (L.) Osbeck	Gora lebu	Gr	Tree, s; pl	Exotic MAR 2619	Fr, Pi	
<i>C. maxima</i> (Burm.) Osbeck	Batabilebu	Gr, Hs	Tree, s; pl	Exotic GMH 5011	Fr	
<i>Clausena heptaphylla</i> (Roxb.) Wight & Arn.	Pan mouri	Gr	Shrub; pl	Native GMH 5095	M	
<i>Glycosmis pentaphylla</i> (Retz.) A. DC.	Datmajoni	Fl, Sj, Wl	Shrub; w	Native SS 276	Fu, M	
<i>Murraya koenigii</i> (L.) Spreng.	Curry patta	Fl, Gr, Wl	Tree, s; pl-w	Native MAR 91	M, Sp	
<i>M. paniculata</i> (L.) Jack	Kamini	Gr, Rs, Wl	Tree, s; pl-w	Native GMH 5021	M, O	
<i>Zanthoxylum rhetsa</i> (Roxb.) DC.	Bajna	Fl, Wl	Tree, m; w	Native SS 278	M, Oy	
Oxalidaceae R. Br.						
<i>Averrhoa bilimbi</i> L.	Bilimbi	Gr, Hs	Tree, s; pl	Exotic GMH 5063	Fr	
<i>A. carambola</i> L.	Kamranga	Gr, Hs	Tree, s; pl	Exotic GMH 5041	Fr	
<i>Oxalis corniculata</i> L.	Amrul	Bw ¹ , Gl, Rs	Herb, pr; w	Exotic MAR 92	M, Vg	
<i>O. debilis</i> Kunth	Golapi amrul	Gr, Hs, Fl	Herb, pr; pl-w	Exotic MAR 2621	O	
Balsaminaceae A. Rich.						
<i>Impatiens balsamina</i> L.	Dopati	Gr, Rs	Herb, er; pl	Exotic SSS 2198	O	

Table 1 contd.

Scientific name	Bangla name	Habitat	Habit	Origin RSE	Use
Araliaceae Juss.					
<i>Polyscias fruticosa</i> (L.) Harms	Tikosaya pata	Gr	Shrub; pl	Exotic SSS 2199	M, O
<i>P. scutellaria</i> (Burm. f.) Fosberg,	Balbusaya pata	Gr	Shrub; pl	Exotic MAR 2622	M, O
Apiaceae Lindl.					
<i>Centella asiatica</i> (L.) Urb.	Thankuni	Fl, Gl	Herb, cr; w	Native SS 360	M, Vg
<i>Coriandrum sativum</i> L.	Dhonia	Fl, Gr, Hs,	Herb, er; cv	Exotic MAR 2623	M, Sp
<i>Eryngium foetidum</i> L.	Bilatedhoneya	Gr, Hs	Herb, er; w	Exotic GMH 5162	M, Sp
<i>Foeniculum vulgare</i> Mill.	Mouri	Hs	Herb, er; cv	Exotic MAR 2624	M, Sp
<i>Oenanthe benghalensis</i> Benth. & Hook. f.	Bon-dhonia	Fl, Gl, Ml	Herb, er; w	Native SSS 2068	M
Gentianaceae Juss.					
<i>Canscora alata</i> (Roth ex Roem. & Schult.) Wall.	Dhankuni	Gl	Herb, er; w	Native SS 170	M
Apocynaceae Juss.					
<i>Aganosma heynei</i> (Spreng.) ined.	Malati lata	Gr	Liana; pl	Exotic MAR 2722	M, O
<i>Allamanda cathartica</i> L.	Ghonta phul	Gr, Hs, Rs	Shrub; pl	Exotic SSS 2068	O
<i>Alstonia scholaris</i> (L.) R. Br.	Chhatim	Rs, Wl	Tree, l; pl-w	Native SS 236	M
<i>Calotropis gigantea</i> (L.) W.T. Aiton	Akondo	Ml, Rs	Shrub; w	Native SSS 2185	Fb, M
<i>Carissa carandas</i> L.	Karamcha	Gr, Hs, Sj	Shrub; pl-w	Native SSS 2069	Fr, Pc
<i>Cascabela thevetia</i> (L.) Lippold	Kolkey phul	Gr, Hs	Tree, s; pl	Exotic MAR 2626	M, O
<i>Catharanthus roseus</i> (L.) G. Don	Noyantara	Bw ¹ , Gr, Hs, Rs	Herb, er; pl-w	Exotic GMH 5051	M, O
<i>Cryptostegia grandiflora</i> Roxb. ex R. Br.	Kriptoran	Gr	Shrub; pl	Exotic MAR 2627	M
<i>Hemidesmus indicus</i> (L.) R. Br. ex Schult.	Anantomul	Fl, Gl	Shrub; w	Native MAR 2628	Fb, M
<i>Holarrhena pubescens</i> Wall. ex G. Don	Kurchi	Gr, Sj, Wl	Tree, s; w	Native SS 103	Fw, M
<i>Ichnocarpus frutescens</i> (L.) Aiton	Parallia lata	Bw ¹ , Fl, Sj, Wl	Liana; w	Native SS 102	Fb, M
<i>Nerium oleander</i> L.	Rakta karobi	Gr, Hs, Rs	Tree, s; pl	Exotic SSS 2070	O
<i>Plumeria alba</i> L.	Shada kathgolap	Gr, Hs, Rs	Tree, m; pl	Exotic MAR 2629	O
<i>P. obtusa</i> L.	Gorur-champa	Gr	Tree, m; pl	Exotic MAR 2630	O
<i>P. pudica</i> Jacq.	Nag dahur	Gr	Tree, s; pl	Exotic MAR 2631	O
<i>P. rubra</i> L.	Lal kathgolap	Gr, Hs, Rs	Tree, m; pl	Native MAR 2632	O
<i>Rauwolfia serpentina</i> (L.) Benth. ex Kurz #	Sarpogondha	Gr, Wl	Shrub; pl-w	Native MAR 99	M
<i>R. tetraphylla</i> L.	Sharpamul	Gr	Shrub; pl	Exotic GMH 5073	M
<i>Tabernaemontana divaricata</i> (L.) R. Br. ex Roem & Schult.	Tagar	Gr, Rs, Sj, Wl	Shrub; w	Native SS 134	M, O
Solanaceae Juss.					
<i>Capsicum annuum</i> L.	Morich	Gr, Hs	Herb, er; cv	Exotic SSS 2074	Sp
<i>Cestrum diurnum</i> L.	Hasnahena	Hs	Shrub; pl	Exotic GMH 5163	O
<i>Datura stramonium</i> L.	Sada dhutra	Fl, Gr, Rs	Shrub; w	Exotic SSS 2071	M
<i>Nicotiana plumbaginifolia</i> Viv.	Ban tamak	Bw ¹ , Fl, Gl, Rs	Herb, er; w	Exotic SS 283	M
<i>Petunia hybrida</i> E. Vilm.	Petunia	Gr, Rs	Herb, er; pl	Exotic SSS 2200	O
<i>Physalis angulata</i> L.	Futka	Fl, Gl, Rs	Herb, er; w	Exotic SS 284	M
<i>Solanum americanum</i> Mill.	Tit-begun	Bw ¹ , Fl, Gl, Rs	Herb, er; w	Exotic SSS 2072	M
<i>S. melongena</i> L.	Begun	Gr, Hs	Shrub; w	Exotic SSS 2073	Vg
<i>S. torvum</i> Sw.	Gota begun	Fl, Sj, Rs	Shrub; w	Exotic SS 195	M, Vg
<i>S. violaceum</i> Ortega	Phutki begun	Bw ¹ , Fl, Sj, Rs	Shrub; w	Native SS 404	M

Table 1 contd.

Scientific name	Bangla name	Habitat	Habit	Origin RSE	Use
<i>S. virginianum</i> L.	Kantakari	Fl, Rs	Herb, pr; w	Native MAR 111	M
Convolvulaceae Juss.					
<i>Aniseia martinicensis</i> (Jacq.) Choisy	Shadamati	Fl, Gl	Herb, vi; w	Exotic MAR 129	M
<i>Argyreia capitiformis</i> (Poir.) Ooststr.	Bijtarak	Sj, Wl	Shrub, sc; w	Native MAR 130	M
<i>Camonea umbellata</i> (L.) A.R. Simões & Staples	Goria lata	Fl, Gl, Rs	Herb, vi; w	Exotic MAR 90	M
<i>C. vitifolia</i> (Burm. f.) A.R. Simões & Staples	Korma lata	Sj, Wl	Herb, vi; w	Native MAR 215	M
<i>Evolvulus nummularius</i> (L.) L.	Bhui okra	Bw ¹ , Fl, Gl, Rs	Herb, cr; w	Exotic SS 483	M, Sb
<i>Ipomoea aquatica</i> Forssk.	Kalmishak	Fl, Wtl	Herb, cr; pl-w	Native SS 377	Vg
<i>I. fistulosa</i> Mart. ex Choisy	Dhol kolmi	Fl, Ml	Shrub; w	Exotic MAR83	Pp, Sb
<i>I. obscura</i> (L.) Ker Gawl.	Kura kalmi	Gr, Rs	Herb, vi; w	Native MAR 2723	Fo, M
<i>I. quamoclit</i> L.	Kunja lata	Gr, Hs	Herb, vi, pl	Exotic MAR 2633	O
<i>I. tricolor</i> Cav.	Morning glory	Gr, Hs	Herb, vi; pl	Exotic MAR 2634	O
<i>Xenostegia tridentata</i> (L.) D.F. Austin & Staples ++	Prasarini	Gl, Rs	Herb, vi; w	Native MAR 2724	M
Cuscutaceae Dumort.					
<i>Cuscuta chinensis</i> Lam.	Chinese sharno lata	Op	Herb, ps; w	Native SSS 2075	M
<i>C. reflexa</i> Roxb.	Sharno lata	Op	Herb, ps; w	Native SS 484	M
Menyanthaceae Dumort.					
<i>Nymphoides cristata</i> (Roxb.) Kuntze	Chand mala	Wtl	Herb, fr; w	Native MAR 2635	Ed
<i>N. hydrophylla</i> (Lour.) Kuntze	Chand mona	Wtl	Herb, fr; w	Native MAR 161	M
<i>N. indica</i> (L.) Kuntze	Panchuli mala	Wtl	Herb, fr; w	Native SS 392	Ed, M
Polemoniaceae Juss.					
<i>Phlox drummondii</i> Hook. +	Flox	Gr, Rs	Herb, er; pl	Exotic MAR 2730	O
Hydroleaceae R. Br. ex Edwards					
<i>Hydrolea zeylanica</i> (L.) Vahl	Kasschera	Wtl	Herb, pr; w	Native SS 169	M
Boraginaceae Juss.					
<i>Heliotropium indicum</i> L.	Hatisur	Fl, Gl, Rs	Herb, er; w	Exotic SS 485	M
<i>Cordia dichotoma</i> G. Forst.	Bohola	Sj, Wl	Tree, m; w	Native GMH 5083	Gu, M
Verbenaceae J. St.-Hil.					
<i>Duranta erecta</i> L.	Duranto	Gr, Ml, Rs	Shrub; pl-w	Exotic SSS 2075	O
<i>Lantana camara</i> L.	Kutus kanta	Bw ¹ , Rs, Sj, Wl	Shrub; w	Exotic SS 112	M
<i>Lippia alba</i> (Mill.) N.E. Br. ex Britton & P. Wilson	Pichas-lakri	Fl, Sj	Shrub; w	Exotic SSS 2076	M
<i>Petrea volubilis</i> L. +	Nilmoni lata	Gr	Shrub, sc; pl	Exotic MAR 2636	O
<i>Phyla nodiflora</i> (L.) Greene	Vuiokra	Fl, Gl, Rs	Herb, cr; w	Native SSS 2077	M
Lamiaceae Martinov					
<i>Anisomeles indica</i> (L.) Kuntze.	Gobura	Fl, Wl	Herb, er; w	Native SS 135	M
<i>Clerodendrum indicum</i> (L.) Kuntze	Bamunhatti	Fl, Sj, Wl	Shrub; w	Native SS 216	M
<i>C. infortunatum</i> L.	Bhat	Fl, Sj, Rs, Wl	Shrub; w	Native MAR 162	M
<i>C. splendens</i> G. Don	Shum bhat	Gr	Shrub; pl	Exotic MAR 2637	M
<i>Gmelina arborea</i> Roxb.	Gamari	Gr, Wl	Tree, l; pl-w	Native SSS 2078	T
<i>Hyptis capitata</i> Jacq.	Tata tokma	Fl, Rs, Sj	Herb, er; w	Exotic SS 137	M
<i>H. suaveolens</i> (L.) Poit.	Tokma	Fl, Rs, Sj	Herb, er; w	Exotic SSS 2079	M

Table 1 contd.

Scientific name	Bangla name	Habitat	Habit	Origin RSE	Use
<i>Leucas zeylanica</i> (L.) W.T. Aiton	Dondokalosh	Bw ¹ , Fl, Gl, Rs	Herb, er; w	Native SS 256	M
<i>Leonurus sibiricus</i> L.	Rokto-dron	Fl, Rs	Herb, er; w	Native MAR 2638	M
<i>Ocimum basilicum</i> L.	Bantulsi	Fl, Gr, Hs	Herb, er; pl-w	Native SSS 2080	M
<i>O. gratissimum</i> L.	Ram tulsi	Gr, Hs	Herb, er; pl-w	Native SSS 2081	M
<i>O. tenuiflorum</i> L.	Kalo tulsi	Fl, Gr, Hs	Herb, er; pl-w	Native SSS 2082	M
<i>Pogostemon auricularius</i> (L.) Hassk.	Aripachuli	Fl, Gl, Rs	Herb, er; w	Native SS 258	M
<i>Plectranthus scutellarioides</i> (L.) R. Br.	Coleus	Bw ¹ , Fl, Gr, Rs	Herb, er; w	Exotic MAR 2640	O
<i>Rotheca serrata</i> (L.) Steane & Mabb.	Bamanhati	Sj, Wl	Shrub; w	Native SS 217	M
<i>Salvia splendens</i> Sellow ex Schult.	Lal sagi	Gr, Rs, Hs	Herb, er; pl	Exotic MAR 2641	O
<i>Tectona grandis</i> L. f.	Shegun	Rs, Wl	Tree, l; pl	Native SS 487	T
<i>Vitex negundo</i> L.	Nishinda	Fl, Sj, Rs	Shrub; w	Native GMH 5164	M
<i>V. peduncularis</i> Wall. ex Schauer	Goda	Gr, Wl	Tree, m; pl	Native MAR 2642	T
<i>Volkameria inermis</i> L.	Shita vat	Gr, Rs	Shrub; pl-w	Exotic GMH 5093	M, O
Plantaginaceae Juss.					
<i>Antirrhinum majus</i> L.	Sonipati	Gr, Rs	Herb, er; pl	Exotic MAR 2725	O
<i>Limnophila aromatica</i> (Lam.) Merr.	Pani korpur	Fl, Wtl	Herb, pr; w	Native GMH 5187	M
<i>L. chinensis</i> (Osbeck) Merr.	Anguli ghash	Fl, Wtl	Herb, pr; w	Native GMH 5188	M
<i>L. heterophylla</i> (Roxb.) Benth.	Patakutra	Wtl	Herb, fr; w	Native SS 488	M, O
<i>L. sessiliflora</i> (Vahl) Blume	Bamonkeshori	Wtl	Herb, em; w	Native SS 489	Wp
<i>Mecardonia procumbens</i> (Mill.) Small	Micardan	Fl, Gl, Rs	Herb, pr; w	Exotic GMH 5051	M
<i>Scoparia dulcis</i> L.	Bondhone	Bw ¹ , Fl, Gl, Rs	Herb, er; w	Exotic SS 281	M
Oleaceae Hoffmanns. & Link					
<i>Jasminum grandiflorum</i> L.	Chameli	Gr	Shrub; pl	Native SSS 2083	M, O
<i>J. sambac</i> (L.) Sol.	Jui, beli	Gr, Rs, Hs	Shrub; pl	Exotic SSS 2084	O
<i>J. scandens</i> (Retz.) Vahl	Paharijui	Sj, Wl	Shrub; w	Native SS 203	M
<i>Nyctanthes arbor-tristis</i> L.	Sheuli	Gr, Hs	Tree, s; pl	Native SSS 2085	M, O
Linderniaceae Borsch, Kai Müll. & Eb. Fisch.					
<i>Bonnaya antipoda</i> (L.) Druce	Zai ghas	Fl, Gl, Rs	Herb, pr; w	Native SS 222	M
<i>Lindernia ciliata</i> (Colsm.) Pennell	Bhui papri	Fl, Gl, Rs	Herb, pr; w	Native SS 490	M
<i>L. crustacea</i> (L.) F. Muell.	Chapra ghas	Fl, Gl, Rs	Herb, pr; w	Native SS 491	M
<i>L. parviflora</i> (Roxb.) Haines	Parvi chapra	Fl, Gl, Rs	Herb, pr; w	Native MAR 2642	M
<i>L. procumbens</i> (Krock.) Borbás	Bakpuspa	Fl, Gl, Rs	Herb, pr; w	Native MAR 144	M
<i>L. rotundifolia</i> (L.) Alston	Tan chapra	Bw ¹ , Fl, Gl, Rs	Herb, pr; w	Native MAR 87	M
<i>Torenia diffusa</i> D. Don	Ushatoren	Fl, Rs	Herb, pr; w	Native SS 492	O
Mazaceae Reveal					
<i>Mazus pumilus</i> (Burm. f.) Steenis	Tutra	Fl, Gl, Rs	Herb, pr; w	Native SSS 2057	M
Acanthaceae Juss.					
<i>Andrographis paniculata</i> (Burm. f.) Nees #	Kalomegh	Gr, Hs, Wl	Herb, er; pl-w	Native MAR 2643	M
<i>Asystasia gangetica</i> (L.) T. Anderson ++	Gangatara	Fl, Sj	Herb, pr; w	Native SS 132	M
<i>Dicliptera paniculata</i> (Forssk.) I. Darbysh.	Nashabhanga	Rs, Gl, Wl	Herb, er; w	Native SS 348	M
<i>Ecbolium ligustrinum</i> (Vahl) Vollesen	Shial leza	Fl, Wl	Herb, er; w	Native SSS 2086	M
<i>Hygrophila erecta</i> (Burm. f.) Hochr	Filareck	Wtl	Herb, er; w	Native MAR 107	M
<i>H. hirta</i> (Vahl) T. Anderson	Buripana	Fl, Gl, Rs	Herb, pr; w	Native MAR 75	M

Table 1 contd.

Scientific name	Bangla name	Habitat	Habit	Origin RSE	Use
<i>H. polysperma</i> (Roxb.) T. Anderson	Alai kalai	Fl, Wtl	Herb, pr; w	Native SSS 2087	M
<i>Justicia adhatoda</i> L.	Basak	Fl, Gr, Hs, Sj	Shurb; w	Native SS 275	M
<i>J. gendarussa</i> Burm.f.	Jagotmadan	Fl, Ml, Sj	Herb, er; pl-w	Native MAR 84	Fn, M
<i>Nelsonia canescens</i> (Lam.) Spreng.	Paramul	Fl, Gl, Wl	Herb, pr; w	Native SS 209	M
<i>Phaulopsis imbricata</i> (Forssk.) Sweet	Bhuibashak	Bw ¹ , Sj, Wl	Herb, pr; w	Native MAR 93	M
<i>Ruellia tuberosa</i> L.	Chotpotey	Fl, Wl	Herb, er; w	Exotic SS 351	M, O
<i>Rungia pectinata</i> (L.) Nees	Pindi	Bw ¹ , Fl, Gl, Rs	Herb, pr; w	Native GMH 5061	M
<i>Staurogyne zeylanica</i> Kuntze	Cylongyne	Fl	Herb, pr; w	Native MAR 2644	M
<i>Thunbergia grandiflora</i> (Roxb. ex Rottl.) Roxb.	Neel lata	Ml, Sj, Wl	Herb, vi; w	Native MAR 2712	M
<i>T. mysorensis</i> (Wight) T. Anderson	Basar lata	Gr	Herb, vi; pl	Exotic MAR 2645	O
Pedaliaceae R. Br.					
<i>Sesamum indicum</i> L.	Til	Fl, Hs	Herb, er; pl-w	Native SSS 2088	Oy
Bignoniaceae Juss.					
<i>Bignonia magnifica</i> W. Bull	Unknown	Gr, Hs	Liana; pl	Exotic MAR 2646	O
<i>Jacaranda mimosifolia</i> D. Don	Nil gulmohor	Gr, Rs	Tree, l; w	Exotic MAR 2647	O
<i>Mansoa alliacea</i> (Lam.) A.H. Gentry	Rasun lata	Gr, Hs	Liana; pl	Exotic MAR 2648	O
<i>Oroxylum indicum</i> (L.) Kurz	Kanidingi	Sj, Wl	Tree, m; w	Native SS 493	M
<i>Parmentiera aculeata</i> (Kunth) Seem. ++	Mombati phal	Gr	Tree, l; pl	Native MAR 2649	Ed, M
<i>Pyrostegia venusta</i> (Ker Gawl.) Miers	Sonali lata	Gr	Liana; pl	Exotic MAR 2650	M, O
<i>Tabebuia rosea</i> (Bertol.) Bertero ex A. DC. +	Tobebia	Gr	Tree, m; pl	Exotic MAR 2651	O
<i>Tecoma stans</i> (L.) Juss. ex Kunth +	Tecoma	Gr, Rs	Tree, s; pl	Exotic SSS 2089	O
<i>Spathodea campanulata</i> P. Beauv. +	Rudra polash	Gr, Rs	Tree, l; pl	Exotic SSS 2090	M, O
Lentibulariaceae Rich.					
<i>Utricularia aurea</i> Lour.	Patajhajhi	Wtl	Herb, sm; w	Native GMH 5165	M, Wp
Campanulaceae Juss.					
<i>Wahlenbergia marginata</i> (Thunb.) A. DC. Kardi		Lb, Wtl	Herb, er; w	Native MAR 2726	M
Rubiaceae Juss.					
<i>Catunaregam spinosa</i> (Thunb.) Tirveng.	Man kanta	Bw ² , Sj, Wl	Shrub; w	Native SS 494	Fu, M
<i>Coffea arabica</i> L.	Koffee	Gr	Shrub; pl	Exotic SAK 2103	Bv, M
<i>C. benghalensis</i> B. Heyne ex Schult.	Bangla koffee	Sj, Wl	Shrub; w	Native GMH 5071	M
<i>Dentella repens</i> (L.) J.R. Forst. & G. Forst.	Bhuiapat	Fl, Gl	Herb, pr; w	Native SS 400	M
<i>Gardenia coronaria</i> Buch.-Ham.	Koinor	Gr	Tree, m; pl	Native SAK 2062	O, T
<i>G. jasminoides</i> J. Ellis	Gondhoraj	Gr, Hs	Shrub; pl	Native MAR 2652	M, O
<i>G. latifolia</i> Aiton	Papra	Gr, Hs	Shrub; pl	Native MAR 2653	O
<i>Haldina cordifolia</i> (Roxb.) Ridsdale	Haldu	Gr	Tree, m; pl	Native SS 495	M, T
<i>Hymenodictyon orixense</i> (Roxb.) Mabb.	Bhuikadam	Gr	Tree, l; pl	Native MAR 2654	M, T
<i>Ixora coccinea</i> L.	Rangon	Gr, Rs, Hs	Shrub; pl	Native SAK 2027	O
<i>I. cuneifolia</i> Roxb.	Jangli rangon	Sj, Wl	Shrub; w	Native SAK 2020	M
<i>I. pavetta</i> Andr.	Banrangon	Sj, Wl	Shrub; w	Native SS 224	M
<i>I. undulata</i> Roxb.	Palkajui	Sj, Wl	Shrub; w	Native SS 273	M
<i>Meyna spinosa</i> Roxb. ex Link	Katai	Sj, Wl	Shrub; w	Native MAR 2654	M
<i>Mitragyna parvifolia</i> (Roxb.) Korth.	Phulkadam	Gr	Tree; l; pl	Native MAR 2727	M
<i>Morinda angustifolia</i> Roxb.	Pandusi	Sj, Wl	Shrub; w	Native SS 274	M

Table 1 contd.

Scientific name	Bangla name	Habitat	Habit	Origin RSE	Use
<i>Mussaenda erythrophylla</i> Schumach. & Thonn.	Lal mussenda	Gr, Hs	Shrub; pl	Exotic SSS 2091	O
<i>M. frondosa</i> L.	Kalasona	Gr, Hs	Shrub; pl	Native SSS 2092	O
<i>M. philippica</i> A. Rich.	Mussenda	Gr, Hs	Shrub; pl	Exotic SSS 2093	O
<i>Neolamarckia cadamba</i> (Roxb.) Bosser	Kadom	Bw ² , Rs, Wl	Tree, l; w	Native SS 498	O, T
<i>Oldenlandia corymbosa</i> L.	Khet papra	Bw ¹ , Fl, Gl	Herb, pr; w	Native SS 496	M
<i>O. diffusa</i> (Willd.) Roxb.	Fussa papra	Fl, Gl	Herb, pr; w	Native SS 497	M
<i>O. verticillata</i> L.	Notapapra	Fl, Gl	Herb, pr; w	Native MAR 82	M
<i>Paederia foetida</i> L.	Gandhyabhaduli	Gr, Hs, Sj	Herb, vi; w	Native SS 499	M
<i>Richardia scabra</i> L.	Nakli ipecac	Bw ¹ , Fl, Gl, Rs, Wl	Herb, pr; w	Exotic SAK 2030	M
<i>Spermacoce articularis</i> L. f.	Bahos	Fl, Gl, Rs, Wl	Herb, pr; w	Native SS 272	M
<i>S. exilis</i> (L.O. Williams) C.D. Adams ex W.C. Burger & C.M. Taylor	Baghajangla	Bw ¹ , Fl, Gl, Rs, Wl	Herb, pr; w	Exotic GMH 5168	M
<i>Tamilnadia uliginosa</i> (Retz.) Tirveng. & Sastre ++	Piralu	Sj	Tree, s; w	Native MAR 98	Fu, M
<i>Vangueria madagascariensis</i> J.F. Gmel.	Mainakata	Sj, Wl	Shrub; w	Exotic SS 402	M
Asteraceae Bercht. & J. Presl					
<i>Acmella calva</i> (DC.) R.K. Jansen.	Surjakonnya	Bw ¹ , Fl, Gr, Rs	Herb, pr; w	Native SS144	M
<i>A. paniculata</i> (Wall. ex DC.) R.K. Jansen	Mahatitinga	Gr, Rs	Herb, pr; w	Native SAK 2041	M
<i>Ageratum conyzoides</i> (L.) L.	Fulkuri	Bw ¹ , Fl, Rs, Sj	Herb, er; w	Exotic SAK 2077	M
<i>Bidens pilosa</i> L.	Bidenlosa	Gr, Wl	Herb, er; w	Exotic SAK 2045	O
<i>Blumea densiflora</i> DC.	Nagorfuli	Fl, Gl, Rs	Herb, er; w	Native MAR 146	M
<i>B. lacera</i> (Burm.f.) DC.	Barokukshim	Fl, Gl, Rs	Herb, er; w	Native SAK 2026	M
<i>B. membranacea</i> Wall. ex DC.	Kukurshinga	Fl, Gl, Rs	Herb, er; w	Native SS 365	M
<i>B. oxydonta</i> DC.	Chotokukurshinga	Fl, Gl, Ml	Herb, er; w	Native MAR 74	M
<i>Calendula officinalis</i> L. +	Calendula	Gr, Rs	Herb, er; pl	Exotic SSS 2201	O
<i>Cosmos bipinnatus</i> Cav.	Cosmos	Gr, Rs	Herb, er; pl	Exotic GMH 5199	O
<i>C. sulphureus</i> Cav.	Cosmos	Gr, Rs	Herb, er; pl	Exotic SSS 2202	O
<i>Cotula hemisphaerica</i> Wall. ex Benth. & Hook. f.	Nooney shak	Gr	Herb, pr; w	Native SAK 2013	M
<i>Centipeda minima</i> (L.) A. Br. & Asch.	Nakchikni	Fl, Gl, Lb	Herb, pr; w	Native MAR 78	M
<i>Chromolaena odorata</i> (L.) R.M. King & H. Rob.	Bon motmotia	Bw ¹ , Gl, Lb	Herb, er; w	Exotic SAK 2006	M
<i>Cyanthillium cinereum</i> (L.) H. Rob.	Shialmutra	Bw ¹ , Fl, Gl, Rs	Herb, er; w	Native MAR 145	M
<i>Dahlia imperialis</i> Roetzl ex Ortgies	Dalia	Gr, Rs	Herb, er; pl	Exotic SSS 2203	O
<i>Eclipta prostrata</i> (L.) L.	Kalokeshi	Fl, Gl, Rs	Herb, pr; w	Exotic SS 182	M
<i>Elephantopus mollis</i> Kunth	Hastipadi	Gl, Lb, Rs, Wl	Herb, cr; w	Exotic SS 366	M
<i>Emilia sonchifolia</i> (L.) DC.	Mechitra	Fl, Gl, Lb	Herb, er; w	Native SS 367	M
<i>Enydra fluctuans</i> DC.	Helencha	Wtl	Herb, pr; w	Native SAK 2091	M, Vg
<i>Gazania rigens</i> (L.) Gaertn. +	Gaznia	Gr, Rs	Herb, er; pl	Exotic SSS 2204	O
<i>Gerbera jamesonii</i> Adlam +	Jarbera	Gr, Rs	Herb, er; pl	Exotic GMH 5159	O
<i>Glebionis coronaria</i> (L.) Cass. ex Spach	Chandramallika	Gr, Rs	Herb, er; pl	Exotic MAR 2731	O
<i>Gnaphalium polycaulon</i> Pers.	Bara kamra	Fl, Gr, Gl	Herb, er; w	Native MAR 172	M
<i>Grangea maderaspatana</i> (L.) Poir.	Namuti	Fl, Lb	Herb, er; w	Native SS 231	M
<i>Gynura procumbens</i> (Lour.) Merr. ++	Gynura	Gr, Hs	Herb, er; pl-w	Native SAK 2073	M

Table 1 contd.

Scientific name	Bangla name	Habitat	Habit	Origin RSE	Use
<i>Launaea asplenifolia</i> Hook.f.	Tik-chana	Fl, Rs	Herb, er; w	Exotic SAK 2060	M
<i>Mikania cordata</i> (Burm.f.) B.L. Rob.	Assam lata	Fl, Ml, Sj	Herb, vi; w	Exotic SAK 2063	Fd, M
<i>Parthenium hysterophorus</i> L. +	Parthenum	Fl, Rs	Herb, er; w	Exotic SAK 2074	M, Po
<i>Pseudognaphalium luteoalbum</i> (L.) Hilliard & B.L. Burt	Barakamra	Fl, Gl, Rs	Herb, er; w	Native SS 183	M
<i>Pseudelephantopus spicatus</i> (B. Juss. ex Aubl.) C.F. Baker +	Unknown	Ml, Rs	Herb, er; w	Exotic MAR 97	M
<i>Sonchus arvensis</i> L.	Chashar	Fl, Gl, Rs	Herb, er; w	Exotic SAK 2038	M
<i>Sphagneticola trilobata</i> (L.) Pruski +	Mahabhringaraj	Fl, Rs	Herb, pr; w	Exotic SS 214	Fd, O
<i>Symphyotrichum laeve</i> (L.) Á. Löve & D. Löve +	Aster	Gr, Rs	Herb, er; pl	Exotic MAR 2732	O
<i>Synedrella nodiflora</i> (L.) Gaertn.	Nak phul	Fl, Gl, Rs	Herb, er; w	Exotic SS 125	M
<i>Tagetes erecta</i> L.	Gada, ganda	Herb, er; pl	Herb, er; pl	Exotic GMH 5181	M, O
<i>Tridax procumbens</i> (L.) L.	Tridhara	Bw ¹ , Fl, Rs, Gl	Herb, er; w	Exotic SS 181	M
<i>Xanthium strumarium</i> L.	Ghagra	Fl, Lb, Gl	Herb, er; w	Exotic MAR 103	M
<i>Youngia japonica</i> (L.) DC.	Youngaful	Fl, Gl, Rs	Herb, er; w	Native MAR 131	M
<i>Zinnia peruviana</i> (L.) L. +	Zinia	Gr, Rs	Herb, er; pl	Exotic SSS 2205	O
LILIOPSIDA Batsch					
Alismataceae Vent.					
<i>Limncharis flava</i> (L.) Buchenau	Letuce pana	Wtl	Herb, er; w	Exotic GMH 5109	Ap, Vg
<i>Sagittaria sagittifolia</i> L.	Chotokut	Lb, Wtl	Herb, er; w	Exotic GMH 5110	Fo, O
Hydrocharitaceae Juss.					
<i>Blyxa japonica</i> (Miq.) Maxim. ex Asch. & Gürke	Japani blyxa	Lb, Wtl	Herb, sm; w	Native MAR 2658	Fo
<i>Hydrilla verticillata</i> (L. f.) Royle	Kureli	Wtl	Herb, sm; w	Native SS 409	Ap, Ff
<i>Najas graminea</i> Delile	Dhanijhaji	Wtl	Herb, sm; w	Native MAR 149	Nk
<i>N. indica</i> (Willd.) Cham.	Deshijhaji	Wtl	Herb, sm; w	Native MAR 163	Ap
<i>N. minor</i> All.	Soto jhaji	Wtl	Herb, sm; w	Native MAR 2659	Ff
<i>Nechamandra alternifolia</i> (Roxb. ex Wight) Thwaites	Rasna-zanji	Wtl	Herb, sm; w	Native MAR 2660	Nk
<i>Ottelia alismoides</i> (L.) Pers.	Panikala	Wtl	Herb, sm; w	Native MAR 150	Vg
<i>Vallisneria spiralis</i> L.	Patseola	Wtl	Herb, sm; w	Native MAR 148	Ap
Aponogetonaceae Planch.					
<i>Aponogeton appendiculatus</i> H. Bruggen	Ghechu	Wtl	Herb, er; w	Native SSS 2165	Vg
<i>A. undulatus</i> Roxb.	Dheu-ghechu	Wtl	Herb, er; w	Native SSS 2166	Vg
Potamogetonaceae Bercht. & J. Presl					
<i>Potamogeton crispus</i> L.	Pata zhanchi	Lb, Wtl	Herb, sm; w	Native SSS 2094	Vg
<i>P. nodosus</i> Poir.	Lombu zhanchi	Lb, Wtl	Herb, sm; w	Native SSS 2095	Nk
Arecaceae Bercht. & J. Presl					
<i>Areca catechu</i> L.	Supari	Gr, Hs, Rs	Palm, l; pl	Exotic SS 500	Ed, M
<i>Attalea cohune</i> Mart.	Cohune palm	Gr	Palm, l; pl	Exotic MAR 2661	O
<i>Borassus flabellifer</i> L.	Tal	Gr, Hs, Rs	Palm, l; pl-w	Native SS 501	Fb, Ju
<i>Calamus erectus</i> Roxb. #	Kdom bet	Gr, Lb, Rs	Palm, er; pl-w	Native MAR 2662	Cc
<i>C. guruba</i> Buch.-Ham. ex Mart. #	Jali bet	Gr, Lb, Sj, Rs	Palm, cl; pl-w	Native MAR 182	Cc
<i>C. latifolius</i> Roxb. #	Sanchi bet	Gr, Lb, Rs	Palm, cl; pl-w	Native MAR 2663	Cc
<i>C. longisetus</i> Griff. #	Karak bet	Gr, Lb	Palm, cl; pl-w	Native MAR 2664	Cc

Table 1 contd.

Scientific name	Bangla name	Habitat	Habit	Origin RSE	Use
<i>C. tenuis</i> Roxb.	Unknown	Gr, Lb	Palm, cl; pl-w	Native MAR 2665	Cc, Fr
<i>Caryota urens</i> L.	Sago palm	Gr, Rs	Palm, l; pl	Exotic SSS 2096	O
<i>Chamaedorea elegans</i> Mart.	Supari palm	Gr	Palm, s; pl	Exotic SSS 2097	O
<i>Cocos nucifera</i> L.	Narikel	Gr, Hs, Ml	Palm, l; pl-w	Exotic SS 502	Fw, Oy
<i>Corypha taliera</i> Roxb. #	Tali	Gr	Palm, l; pl	Native GMH 5100	O
<i>Dypsis lutescens</i> (H.Wendl.) Beentje & J. Dransf.	Areca palm	Bw ² , Gr	Palm, cl; pl	Exotic MAR 2666	Cc, O
<i>Elaeis guineensis</i> Jacq.	Oil palm	Gr, Hs	Palm, l; pl	Exotic GMH 5101	Oy
<i>Licuala grandis</i> H. Wendl.	Vanuatu palm	Gr	Palm, l; pl	Exotic MAR 2667	O
<i>L. peltata</i> Roxb. ex Buch.-Ham.	Kurkuti	Gr	Palm, m; pl	Native GMH 5102	O
<i>L. spinosa</i> Wurm	Katalicu	Gr	Palm, m; pl	Native MAR 2809	O
<i>Livistona chinensis</i> (Jacq.) R. Br. ex Mart.	China tokopata	Gr	Palm, m; pl	Exotic GMH 5103	O
<i>Phoenix acaulis</i> Roxb. #	Khudi khejur	Gr	Palm, s; pl	Native GMH 5104	O
<i>P. canariensis</i> Chabaud	Canarian khejur	Gr	Palm, s; pl	Exotic MAR 2728	O
<i>P. loureiroi</i> Kunth	Bon khejur	Sj, Wl	Palm, s; w	Native GMH 5105	O
<i>P. sylvestris</i> (L.) Roxb.	Deshi khejur	Hs, Ml, Rs	Palm, l; pl-w	Native SS408	Hc, Ju
<i>Rhapis excelsa</i> (Thunb.) Henry	Gurital	Gr	Palm, s; pl	Exotic SSS 2098	O
<i>Roystonea regia</i> (Kunth) O.F. Cook	Bottol palm	Gr	Palm, l; pl	Exotic SSS 2099	O
Pandanaceae R. Br.					
<i>Pandanus amaryllifolius</i> Roxb.	Polau pata	Gr, Hs	Shrub; pl	Exotic SSS 2100	Ff
<i>P. furcatus</i> Roxb.	Kasiakata	Gr	Tree, s; pl	Native MAR 2668	O, M
<i>P. odorifer</i> (Forssk.) Kuntze	Keya	Gr	Tree, s; pl	Native MAR 2669	Fb, M
<i>P. tectorius</i> Parkinson ex Du Roi	Keuri kanta	Gr	Tree, s, pl	Exotic MAR 2670	Fb, Ff
Araceae Juss.					
<i>Alocasia formicata</i> (Roxb.) Schott	Bish kachu	Fl, Hs, Wtl	Herb, er; w	Native MAR 2671	M
<i>A. macrorrhizos</i> (L.) G. Don	Man kachu	Fl, Hs	Herb, er; pl-w	Exotic MAR 2672	M, Vg
<i>Amorphophallus paeoniifolius</i> (Dennst.) Nicolson	Ol kachu	Fl, Hs	Herb, er; pl-w	Native MAR 2673	M, Vg
<i>Anthurium andraeanum</i> Linden ex André	Flamingo	Gr	Herb, er; pl	Exotic SSS 2142	O
<i>A. crystallinum</i> Linden & André	Anthurium	Gr, Hs	Herb, er; pl	Exotic SSS 2181	O
<i>Caladium bicolor</i> (Aiton) Vent.	Diranga kachu	Gr, Hs	Herb, er; pl-w	Exotic MAR 2674	O
<i>C. humboldtii</i> (Raf.) Schott	Caladium	Gr, Hs	Herb, er; pl	Exotic MAR 2816	O
<i>Colocasia esculenta</i> (L.) Schott	Jangli kachu	Fl, Hs, Wtl	Herb, er; w	Native SS 503	M, Vg
<i>Dieffenbachia seguine</i> (Jacq.) Schott	Segu bet	Fl, Gr, Hs	Herb, er; pl-w	Exotic MAR 2817	O
<i>Epipremnum aureum</i> (Linden & André) G.S. Bunting	Money plant	Gr, Hs	Herb, vi; pl-w	Exotic SSS 2101	O
<i>E. pinnatum</i> (L.) Engl.	Premnum	Gr, Hs	Herb, vi; pl-w	Native SSS 2102	M, O
<i>Lasia spinosa</i> (L.) Thwaites	Kata kachu	Hs, Lb, Wtl	Herb, er; w	Native SSS 2103	M, Vg
<i>Lemna minor</i> L.	Sujipana	Wtl	Herb, ff; w	Native SSS 2104	Ff, Wp
<i>L. perpusilla</i> Torr.	Khudipana	Wtl	Herb, ff; w	Exotic SSS 2105	Ef, Wp
<i>Monstera deliciosa</i> Liebm.	Makhna	Gr, Hs	Herb, vi; pl-w	Exotic SS 407	Ed, O
<i>Pistia stratiotes</i> L.	Topapana	Wtl	Herb, ff; w	Native SS 504	M
<i>Pothos scandens</i> L.	Hati lata	Op	Herb, cr; pl-w	Native SS 505	M
<i>Scindapsus officinalis</i> (Roxb.) Schott	Gaj-pipul	Op	Herb, vi; pl-w	Native SSS 2182	M
<i>Spirodela polyrhiza</i> (L.) Schleid.	Tetulipana	Wtl	Herb, ff; w	Native MAR 152	Ff, Wp
<i>Syngonium podophyllum</i> Schott	Podolata kachu	Fl, Gr, Hs, Sj	Herb, pr; pl-w	Native SSS 2183	O

Table 1 contd.

Scientific name	Bangla name	Habitat	Habit	Origin RSE	Use
<i>Typhonium flagelliforme</i> (Lodd.) Blume	Ghechu	Fl, Lb, Rs	Herb, er; w	Native <i>GMH 5106</i>	M
<i>T. trilobatum</i> (L.) Schott	Ghet kachu	Fl, Lb, Rs	Herb, er; w	Native <i>GMH 5107</i>	M, Vg
<i>Wolffia arrhiza</i> (L.) Horkel ex Wimm.	Guripana	Wtl	Herb, ff; w	Native <i>SSS 2184</i>	Ff, Wp
<i>Xanthosoma sagittifolium</i> (L.) Schott	Dudh kachu	Fl, Lb, Wtl	Herb, er; w	Exotic <i>GMH 5108</i>	M, Vg
Commelinaceae Mirb.					
<i>Commelina benghalensis</i> L.	Kanshira	Fl, Gl, Lb, Rs	Herb, cr; w	Native <i>SS 229</i>	M
<i>C. diffusa</i> Burm.f.	Monayna kanshira	Fl, Gl, Lb, Rs	Herb, cr; w	Native <i>SS 506</i>	Wd
<i>C. erecta</i> L.	Jata kanchira	Fl, Gl, Lb, Rs	Herb, er; w	Exotic <i>MAR 154</i>	Wd
<i>C. longifolia</i> Lam.	Pani kanshira	Fl, Gl, Lb, Rs	Herb, cr; w	Native <i>MAR 104</i>	Wd
<i>C. paludosa</i> Blume	Kanjia	Fl, Gl, Lb, Rs	Herb, er; w	Native <i>MAR 153</i>	Wd
<i>Cyanotis axillaris</i> (L.) D. Don ex Sweet	Axinot	Fl, Gl, Rs	Herb, er; w	Native <i>GMH 5111</i>	Wd
<i>C. cristata</i> (L.) D. Don.	Tata- kansira	Fl, Gl, Lb	Herb, cr; w	Native <i>SS 295</i>	M
<i>Murdannia nudiflora</i> (L.) Brenan	Kureli	Fl, Lb, Ml	Herb, cr; w	Native <i>MAR 155</i>	Wd
<i>Tradescantia pallida</i> (Rose) D.R. Hunt	Begunipindo	Gr	Herb, er; pl-w	Exotic <i>SSS 2106</i>	O
<i>T. spathacea</i> Sw.	Chamapindo	Gr	Herb, er; pl-w	Exotic <i>SSS 2107</i>	O
<i>T. zebrina</i> Bosse	Zebra-pindo	Gr	Herb, er; pl-w	Exotic <i>SSS 2108</i>	O
Eriocaulaceae Martinov					
<i>Eriocaulon quinquangulare</i> L.	Guriguccha	Lb, Wtl	Herb, er; w	Native <i>SS 204</i>	Wd
<i>E. truncatum</i> Buch.-Ham. ex Mart.	Kataguccha	Fl, Lb, Wtl	Herb, er; w	Native <i>SSS 2109</i>	Wd
Cyperaceae Juss.					
<i>Cyperus compressus</i> L.	Chancha	Fl, Gl, Rs	Herb, er; w	Native <i>SSS 2110</i>	Wd
<i>C. corymbosus</i> Rottb.	Golamethi	Fl, Gl, Lb, Rs	Herb, er; w	Native <i>SS 206</i>	Fb, Fo
<i>C. cuspidatus</i> Kunth	Sagarmukhimethi	Fl, Gl, Rs	Herb, er; w	Native <i>MAR 156</i>	Wd
<i>C. cyperoides</i> (L.) Kuntze	Kucha	Fl, Gl, Rs	Herb, er; w	Native <i>SS 298</i>	Ed
<i>C. difformis</i> L.	Behua ghasi	Fl, Gl, Lb	Herb, er; w	Native <i>SSS 2111</i>	Fo, Wd
<i>C. digitatus</i> Roxb.	Hath ghasi	Gl, Lb, Wtl	Herb, er; w	Native <i>SSS 2112</i>	Wd
<i>C. distans</i> L. f.	Panimalanga	Bw ¹ , Fl, Gl, Rs	Herb, er; w	Native <i>SS207</i>	Fo
<i>C. exaltatus</i> Retz.	Tata ghasi	Gl, Lb, Wtl	Herb, er; w	Native <i>GMH 5112</i>	Fb, Wd
<i>C. haspan</i> L.	Haspan ghasi	Fl, Gl, Wtl	Herb, er; w	Native <i>MAR 2675</i>	Wd
<i>C. iria</i> L.	Barachucha	Fl, Gl, Rs	Herb, er; w	Native <i>MAR 2676</i>	Fb, M
<i>C. pilosus</i> Vahl	Pashamkathai	Fl, Gl, Lb	Herb, er; w	Native <i>MAR 118</i>	Wd
<i>C. pulcherrimus</i> Willd. ex Kunth	Unknown	Gl, Lb, Wtl	Herb, er; w	Native <i>MAR 2677</i>	Wd
<i>C. rotundus</i> L.	Nagarmutha	Fl, Gl, Hs, Rs	Herb, er; w	Native <i>SSS 2113</i>	M
<i>C. substramineus</i> Kük.	Paikram ghas	Fl, Gl, Lb, Rs	Herb, er; w	Native <i>SS 213</i>	Wd
<i>C. tenuispica</i> Steud.	Paikamutha	Gl, Lb, Wtl	Herb, er; w	Native <i>SS 302</i>	Sb, Wd
<i>C. thomsonii</i> Boeckeler #	Sanimutha	Fl, Gl, Rs	Herb, er; w	Native <i>MAR 119</i>	Wd
<i>Diplacrum caricinum</i> R. Br.	Unknown	Fl, Lb, Rs	Herb, pr; w	Native <i>MAR 2678</i>	Wd
<i>Eleocharis acutangula</i> (Roxb.) Schult.	Unknown	Lb, Ml, Wtl	Herb, er; w	Native <i>SSS 2114</i>	Sb, Wd
<i>E. dulcis</i> (Burm. f.) Trin. ex Hensch.	Mishti ghasi	Fl, Lb, Ml	Herb, er; w	Native <i>SSS 2115</i>	Ed
<i>Fimbristylis bisumbellata</i> (Forssk.) Bubani	Bisu fimbry	Lb, Ml, Wtl	Herb, er; w	Native <i>SSS 2116</i>	Wd
<i>F. dichotoma</i> (L.) Vahl	Bara nirbishi	Bw ¹ , Fl, Gl, Rs	Herb, er; w	Native <i>GMH 5113</i>	Wd
<i>F. ovata</i> (Burm. f.) J. Kern	Marmari	Lb, Ml, Wtl	Herb, er; w	Native <i>MAR106</i>	Wd
<i>F. quinquangularis</i> (Vahl) Kunth	Barajavani	Fl, Lb, Wtl	Herb, er; w	Native <i>MAR 2679</i>	Wd
<i>F. schoenoides</i> (Retz.) Vahl	Kesari malanga	Fl, Lb, Wtl	Herb, er; w	Native <i>SSS 2117</i>	Wd

Table 1 contd.

Scientific name	Bangla name	Habitat	Habit	Origin RSE	Use
<i>F. tetragona</i> R. Br.	Unknown	Gl, Lb, Wtl	Herb, er; w	Native SSS 2118	Wd
<i>Fuirena ciliaris</i> (L.) Roxb.	Poshmi ghas	Gl, Lb, Wtl	Herb, er; w	Native SS 212	Wd
<i>F. umbellata</i> Rottb.	Unknown	Gl, Lb, Wtl	Herb, er; w	Native SSS 2119	Ed, Wd
<i>Kyllinga brevifolia</i> Rottb.	Shabujnirbisa	Fl, Gl, Lb, Rs	Herb, er; w	Native SS 305	Fo
<i>K. nemoralis</i> (J.R. Forst. & G. Forst.) Dandy ex Hutch. & Dalziel	Subashinirbisa	Fl, Gl, Lb, Rs	Herb, er; w	Native SSS 2120	Ed, Fo
<i>Pycnus pumilus</i> (L.) Nees	Paikpami ghasi	Fl, Gl, Lb, Rs	Herb, er; w	Native MAR 2680	Sb, Wd
<i>Schoenoplectiella articulata</i> (L.) Lye	Chechra	Fl, Lb, Rs	Herb, er; w	Native GMH 5114	Wd
<i>S. juncooides</i> (Roxb.) Lye	Chechri	Fl, Lb, Rs	Herb, er; w	Native SSS 2121	Wd
<i>S. supina</i> (L.) Lye	Supipotpoti ghas	Fl, Lb, Rs	Herb, er; w	Native MAR 157	Wd
<i>Scleria levis</i> Retz.	Rialevi ghas	Fl, Lb, Rs	Herb, cr; w	Native SS309	Wd
Poaceae Barnhart					
<i>Alloteropsis cimicina</i> (L.) Stapf	Unknown	Gl, Rs	Herb, er; w	Native SSS 2122	Wd
<i>Apluda mutica</i> L.	Matika	Lb, Sj	Herb, er; w	Native MAR 2681	Fo
<i>Arundinella bengalensis</i> (Spreng) Druce	Gangabena	Gl, Lb	Herb, er; w	Native SS174	Wd
<i>Axonopus compressus</i> (Sw.) P. Beauv.	Karpet ghas	Bw ¹ , Gl, Rs	Herb, er; w	Exotic SS412	Fo
<i>Bambusa balcooa</i> Roxb.	Borak bans	Gr, Hs	Bamboo; pl	Native SSS 2123	Bc
<i>B. bambos</i> (L.) Voss	Kanta bans	Gr	Bamboo; pl	Native MAR181	Bc
<i>B. multiplex</i> (Lour.) Raeusch. ex Schult.	Choi bans	Gr	Bamboo; pl	Exotic MAR 2682	Bc
<i>B. nutans</i> Wall. ex Munro	Mahal bans	Gr, Hs	Bamboo; pl	Native MAR 2683	Bc
<i>B. polymorpha</i> Munro	Parua	Gr	Bamboo; pl	Native SSS 2124	Bc
<i>B. salarkhanii</i> Alam	Jaotha bans	Gr	Bamboo; pl	Native SSS 2125	Bc
<i>B. tulda</i> Roxb.	Mirtinga	Gr, Hs	Bamboo; pl	Native GMH 5115	Bc
<i>B. tuldooides</i> Munro	Ghoti bans	Gr, Hs	Bamboo; pl	Exotic MAR 2683	Bc
<i>B. vulgaris</i> Schrad.	Bariala	Gr	Bamboo; pl	Exotic MAR 2684	Bc
<i>B. mutica</i> (Forssk.) Stapf	Para ghas	Gl, Rs	Herb, er; w	Exotic MAR 158	Fo, Sb
<i>B. reptans</i> (L.) C.A. Gardner & C.E. Hubb.	Unknown	Fl, Lb	Herb, er; w	Native MAR 2685	Fo
<i>Chrysopogon aciculatus</i> (Retz.) Trin.	Prem kanta	Gl, Rs	Herb, er; w	Native SS 314	Hc
<i>C. zizanioides</i> (L.) Roberty	Bena	Bw ¹ , Fl, Lb	Herb, er; w	Native SSS 2128	Hc, Sb
<i>Chloris barbata</i> Sw.	Unknown	Fl, Gl, Rs	Herb, er; w	Native MAR 2686	Fo
<i>C. virgata</i> Sw.	Anguli ghas	Gl, Rs	Herb, er; w	Native MAR 113	Fo
<i>Coix lacryma-jobi</i> L.	Tasbi	Lb, Wtl	Herb, er; w	Native SS 413	Ed, Fo
<i>Cynodon dactylon</i> (L.) Pers.	Durba ghas	Fl, Gl, Rs	Herb, pr; w	Native GMH 5116	Fo, Sb
<i>Cyrtococcum oxyphyllum</i> (Hochst. ex Steud.) Stapf	Oxycocca ghas	Fl, Gl, Rs	Herb, er; w	Native SSS 2129	Fo
<i>C. patens</i> (L.) A. Camus	Unknown	Fl, Gl, Rs	Herb, er; w	Native SS 320	Fo
<i>Cymbopogon citratus</i> (DC.) Stapf	Lemon ghas	Fl, MI, Rs	Herb, er; cv-w	Exotic SSS 2130	Ff, M
<i>Dactyloctenium aegyptium</i> (L.) Willd.	Kakpaya	Fl, Gl, Rs	Herb, er; w	Native GMH 5117	Sb
<i>Dendrocalamus giganteus</i> Munro	Budum bans	Gr	Bamboo; pl	Exotic GMH 5118	Bc, O
<i>D. longispathus</i> (Kurz) Kurz	Orah bans	Gr	Bamboo; pl	Native SSS 2131	Bc
<i>Desmostachya bipinnata</i> (L.) Stapf	Kusha	Fl, Gl, Lb, Rs	Herb, er; w	Native MAR 2687	Bc
<i>Dichanthium annulatum</i> (Forssk.) Stapf	Loari	Bw ¹ , Fl, Gl, Rs	Herb, er; w	Native MAR 2688	Fo
<i>D. caricosum</i> (L.) A. Camus	Detara	Fl, Gl, Rs	Herb, er; w	Native MAR 2689	Fo
<i>Digitaria bicornis</i> (Lam.) Roem. & Schult.	Baikochira	Fl, Gl, MI, Rs	Herb, er; w	Native SSS 2132	Fo

Table 1 contd.

Scientific name	Bangla name	Habitat	Habit	Origin RSE	Use
<i>D. ciliaris</i> (Retz.) Koeler	Kokjachira	Fl, Gl, MI, Rs	Herb, er; w	Native SSS 2133	Fo
<i>D. sanguinalis</i> (L.) Scop.	Mukurjoli	Fl, Gl, MI, Rs	Herb, er; w	Native SSS 2134	Fo
<i>D. setigera</i> Roth	Seti ghas	Bw ¹ , Fl, Gl, Rs	Herb, pr; w	Native MAR 2713	Fo
<i>D. stricta</i> Roth	Unknown	Fl, Gl, MI, Rs	Herb, er; w	Native MAR 2690	Fo
<i>D. ternata</i> (A. Rich.) Stapf	Unknown	Fl, Gl, MI, Rs	Herb, er; w	Native MAR 2691	Fo
<i>Echinochloa colona</i> (L.) Link.	Shama ghas	Fl, MI, Wtl	Herb, er; w	Exotic MAR 121	Fo
<i>E. crus-galli</i> (L.) P. Beauv.	Barashama ghas	Fl, MI, Wtl	Herb, er; w	Native SS 414	Fo, M
<i>E. stagnina</i> (Retz.) P. Beauv.	Parua	Fl, MI, Wtl	Herb, er; w	Native SSS 2136	Fo, Ju
<i>Eleusine indica</i> (L.) Gaertn.	Malankuri	Bw ¹ , Fl, Gl, Rs	Herb, er; w	Native SSS 2137	Sb
<i>Eragrostis uniolooides</i> (Retz.) Nees	Koni ghas	Bw ¹ , Fl, Gl, Rs	Herb, er; w	Native MAR 2692	Fo
<i>E. cilianensis</i> (All.) Janch.	Dudh-nol	Fl, Gl, MI, Rs	Herb, er; w	Native SS 415	Fo
<i>E. ciliaris</i> (L.) R. Br.	Chhotochira ghas	Fl, Gl, MI, Rs	Herb, er; w	Native MAR 2693	Ed, Fo
<i>E. uniolooides</i> (Retz.) Nees ex Steud.	Chirakoni	Fl, Gl, MI, Rs	Herb, er; w	Native SSS 2138	Gm
<i>Hemarthria protensa</i> Steud.	Chaila	Lb, MI, Wtl	Herb, er; w	Native MAR 180	Nk
<i>Hygroryza aristata</i> (Retz.) Nees ex Wight & Arn.	Jongli dhan	Lb, MI, Wtl	Herb, er; w	Native GMH 5119	Fo
<i>Hymenachne amplexicaulis</i> (Rudge) Nees	Nordula ghas	Lb, MI, Wtl	Herb, er; w	Exotic MAR 179	Fo
<i>Isachne globosa</i> (Thunb.) Kuntze	Ball ghas	Fl, Gl, Wtl	Herb, er; w	Native MAR 2694	Fo, Gm
<i>Imperata cylindrica</i> (L.) Raeusch.	Chhan	Bw ¹ , Fl, Gl, Rs	Herb, er; w	Exotic GMH 5120	Nk
<i>Leersia hexandra</i> Sw.	Arali	Fl, Wtl	Herb, cr; w	Native GMH 5121	Fo
<i>Leptochloa chinensis</i> (L.) Nees	Fulka ghas	Fl, Wtl	Herb, er; w	Native SS 208	Fo
<i>L. panicea</i> (Retz.) Ohwi	Mona ghas	Fl, Wtl	Herb, er; w	Native MAR 2695	Fo
<i>Lophatherum gracile</i> Brongn.	Lophail ghas	Fl, Gl, MI, Rs	Herb, er; w	Native MAR 2696	Fo
<i>Melocanna baccifera</i> (Roxb.) Kurz	Muli bans	Gr	Herb, er; w	Native SSS 2139	Bc
<i>Oplismenus burmanni</i> (Retz.) P. Beauv.	Jabri durba	Fl, Gl, MI, Rs	Herb, er; w	Native GMH 5122	Fo
<i>O. compositus</i> (L.) P. Beauv.	Gohur	Gl, MI, Rs, Sj	Herb, er; w	Native SS 180	Fo
<i>Oryza rufipogon</i> Griff.	Bunodhan	Fl, Wtl	Herb, er; w	Native GMH 5123	Fo
<i>O. sativa</i> L.	Dhan	Fl, Wtl	Herb, er; cv	Exotic SSS 2140	Ed, Fd
<i>Ottochloa nodosa</i> (Kunth) Dandy	Voyal ghas	Fl, Gl, MI, Rs	Herb, er; w	Native SSS 2141	Fo
<i>Panicum brevifolium</i> L.	Bashpatighas	Gl, Lb, MI	Herb, er; w	Native SS 418	Fo
<i>P. incomtum</i> Trin.	Panick ghas	Fl, Gl, Lb	Herb, er; w	Native MAR 2697	Fo
<i>P. notatum</i> Retz.	Panita ghas	Fl, Gl, MI	Herb, er; w	Native MAR 2698	Fo
<i>P. paludosum</i> Roxb.	Borati	Lb, MI, Wtl	Herb, er; w	Native MAR 2699	Fo
<i>P. repens</i> L.	Dhani ghas	Fl, Gl, Rs	Herb, er; w	Native SS 419	Fo
<i>P. sarmentosum</i> Roxb.	Voya ghas	Fl, Gl, MI, Rs	Herb, er; w	Native MAR 2700	Fo
<i>Paspalum conjugatum</i> P.J. Bergius.	Moishsha ghas	Gl, Hs, Rs	Herb, er; w	Exotic GMH 5124	Fo, Sb
<i>P. distichum</i> L.	Chhotogoicha	Lb, MI, Wtl	Herb, er; w	Exotic MAR 178	Fo, Sb
<i>P. scrobiculatum</i> L.	Bishmona ghas	Fl, Gl, Rs	Herb, er; w	Native MAR 2701	Fo, M
<i>Pennisetum purpureum</i> Schumach.	Nepi ghas	Fl, Gl, MI, Rs	Herb, er; cv-w	Exotic SSS 2143	Fo
<i>Phyllostachys aurea</i> Rivière & C. Rivière	Sarna bans	Fl, Gl, MI, Rs	Bamboo; pl	Exotic SSS 2144	Bc, O
<i>Pseudoraphis brunoniana</i> (Griff.) Pilg.	Rafi ghas	Lb, Wtl	Herb, em; w	Native SSS 2145	Fo
<i>Rotboellia cochinchinensis</i> (Lour.) Clayton	Boro-sowati ghas	Lb, Wtl	Herb, er; w	Native GMH 5125	Fo
<i>Saccharum officinarum</i> L.	Akh	Gr, Hs	Herb, er; cv	Exotic MAR 2702	Ju, Pp
<i>S. spontaneum</i> L.	Kash	Fl, Gl, MI, Lb	Herb, er; w	Native SSS 2146	Fo, Sb

Table 1 contd.

Scientific name	Bangla name	Habitat	Habit	Origin RSE	Use
<i>Sacciolepis indica</i> (L.) A. Chase	Siltatto ghas	Lb, MI, Wtl	Herb, er; w	Native SS 421	Fo
<i>S. interrupta</i> (Willd.) Stapf	Nardula	Fl, Gl	Herb, er; w	Native SS 422	Fo
<i>S. myosuroides</i> (R. Br.) A. Camus	Musurdolla ghas	Fl, Gl, Wtl	Herb, er; w	Native MAR 2703	Fo
<i>Setaria barbata</i> (Lam.) Kunth	Bashpata ghas	Fl, Gl, MI	Herb, er; w	Native MAR 382	Fo
<i>S. flavida</i> (Retz.) Veldkamp	Karin ghas	Fl, Gl, Rs	Herb, er; w	Native SS 420b	Fo
<i>S. palmifolia</i> (J. Koenig) Stapf	Urodhan	Fl, Gl, MI	Herb, er; w	Native MAR 2704	Fo
<i>S. pumila</i> (Poir.) Roem. & Schult.	Halde kawn	Fl, Gl, MI	Herb, er; w	Native MAR 2705	Fo
<i>Sporobolus diandrus</i> (Retz.) P. Beauv.	Benajoni	Fl, Gl, MI, Rs	Herb, er; w	Native SS 338	Fo
<i>S. indicus</i> (L.) R. Br.	Ailbelajoni ghas	Fl, Gl, MI, Rs	Herb, er; w	Exotic MAR 2706	Fo
<i>Thyrsostachys oliveri</i> Gamble	Burma bans	Fl, Gl, MI, Rs	Herb, er; w	Exotic MAR 2707	Bc
<i>Thysanolaena latifolia</i> (Roxb. ex Hornem.) Honda ++	Phul jharu	Gr, Hs, MI	Herb, er; cv-w	Native SS 340	Fo, Hc
<i>Urochloa distachyos</i> (L.) T.Q. Nguyen,	Cori ghas	Gl, Rs	Herb, cr; w	Native SSS 2126	Fo, Sb
<i>U. kurzii</i> (Hook.f.) T.Q. Nguyen,	Unknown	Gl, Lb, Rs	Herb, cr; w	Native SSS 2127	Fo
<i>U. panicoides</i> P. Beauv.	Kuridana	Fl, MI	Herb, er; w	Native SSS 2147	Sb
<i>Zea mays</i> L.	Bhutta	Fl, Hs	Herb, er; cv	Exotic SSS 2148	Ed
Strelitziaceae Hutch.					
<i>Ravenala madagascariensis</i> Sonn.	Panthopadap	Gr	Tree, s; pl	Exotic SSS 2149	O
<i>Strelitzia reginae</i> Banks	Behester bulbuli	Gr	Herb, er; pl	Exotic SSS 2150	O
Heliconiaceae Nakai					
<i>Heliconia metallica</i> Planch. & Linden ex Hook.	Swarga pakhi	Gr	Herb, er; pl	Exotic MAR 2708	O
<i>H. psittacorum</i> L. f.	Tiathuti	Gr	Herb, er; pl	Exotic MAR 2709	O
<i>H. rostrata</i> Ruiz & Pav.	Chingrinomi	Gr	Herb, er; pl	Exotic MAR 2800	O
Musaceae Juss.					
<i>Musa paradisiaca</i> L.	Kach kola	Fl, Hs, MI	Herb, er; pl-w	Exotic SS 508	Fr, Vg
Zingiberaceae Martinov					
<i>Alpinia calcarata</i> (Haw.) Roscoe	Deshi choto elachi	Gr	Herb, er; cv	Exotic SSS 2151	M, Sp
<i>A. conchigera</i> Griff.	Konchi elachi	Gr	Herb, er; cv	Native SSS 2152	M
<i>Curcuma longa</i> L.	Halud	Fl, Hs	Herb, er; cv	Exotic SSS 2153	Sp
<i>C. zedoaria</i> (Christm.) Rosc.	Sathi	Fl, Rs, Sj, Wl	Herb, er; w	Native SS 509	M
<i>Elettaria cardamomum</i> (L.) Maton	Soto elachi	Gr, Hs	Herb, er; pl	Exotic SSS 2154	Sp
<i>Hedychium coronarium</i> J. König	Dolon chapa	Gr, Hs, Rs	Herb, er; cv	Exotic SSS 2155	O
<i>Zingiber officinale</i> Roscoe	Ada	Fl, Hs	Herb, er; cv	Exotic SSS 2156	Sp
<i>Z. zerumbet</i> (L.) Roscoe ex Sm.	Mohaboribotch	Fl, Hs, Sj	Herb, er; w	Native SSS 2157	M
Costaceae Nakai					
<i>Cheilocostus speciosus</i> (J. Koenig) C.D. Specht	Keomul	Bw ² , Fl, Lb, Rs	Herb, er; w	Native SS 296	M
<i>Costus woodsonii</i> Maas	Lipistic plant	Gr	Herb, er; cv	Exotic MAR 2801	O
Cannaceae Juss.					
<i>Canna indica</i> L.	Kolabati	Gr, Hs, Rs	Herb, er; pl-w	Exotic SSS 2158	M, O
Marantaceae R. Br.					
<i>Schumannianthus dichotomus</i> (Roxb.) Gagnep.	Pati-pata	Hs, Wtl	Shrub; cv-w	Native GMH 5126	Hc
Pontederiaceae Kunth					
<i>Eichhornia crassipes</i> (Mart.) Solms	Kachuripana	Wtl	Herb, ff; w	Exotic SS 345	Fo
<i>Monochoria hastata</i> (L.) Solms	Bara nukha	Wtl	Herb, em; w	Native SS 347	M
<i>M. vaginalis</i> (Burm. f.) C. Presl	Nukha	Wtl	Herb, em; w	Native MAR 159	M

Table 1 contd.

Scientific name	Bangla name	Habitat	Habit	Origin RSE	Use
Amaryllidaceae J. St.-Hil.					
<i>Allium cepa</i> L.	Piyaj	Hs	Herb, er; cv	Exotic MAR 2807	Sp
<i>A. sativum</i> L.	Rashun	Hs	Herb, er; cv	Exotic MAR 2808	Sp
<i>Crinum asiaticum</i> L.	Shukdarshan	Gr, Hs	Herb, er; pl	Native SS 411	M, O
<i>C. latifolium</i> L.	Baro-Shukdarshan	Gr, Hs	Herb, er; pl	Native SSS 2161	O
<i>Scadoxus multiflorus</i> (Martyn) Raf.	Agnigolock	Gr, Hs	Herb, er; cv	Exotic SSS 2162	M, O
<i>Urceolina</i> × <i>grandiflora</i> (Planch. & Linden) Traub	Eucharis lily	Gr	Herb, er; pl	Exotic MAR 2729	O
<i>Zephyranthes minima</i> (Kunth) D. Dietr.	Golapi ghash phul	Gr, Hs	Herb, er; pl	Exotic SSS 2163	O
Asparagaceae Juss.					
<i>Agave americana</i> L.	Shatabdi udvid	Gr, Hs	Herb, er; cv	Exotic MAR 2802	O
<i>A. vivipara</i> L.	Unknown	Gr, Hs	Herb, er; cv	Exotic MAR 2803	O
<i>Asparagus racemosus</i> Wild.	Shatamuli	Gr, Hs, Sj	Herb, vi; w	Native SS 410	M
<i>Cordyline fruticosa</i> (L.) A. Chev.	Agnishwar	Gr, Hs	Herb, er; cv	Exotic SSS 2159	M
<i>Dracaena fragrans</i> (L.) Ker Gawl.	Gondhi drakan	Gr, Hs	Shrub; pl	Exotic MAR 2804	O
<i>D. spicata</i> Roxb.	Kado drakan	Gr, Hs	Shrub; pl	Native MAR 2805	O
<i>Furcraea foetida</i> (L.) Haw.	Gandhohemp	Gr, Hs	Shrub; pl	Exotic MAR 2806	O
<i>Sansevieria trifasciata</i> Prain	Sutahara	Gr, Hs	Herb, er; cv	Exotic SSS 2160	O
Colchicaceae DC.					
<i>Gloriosa superba</i> L.	Ulatchandal	Gr, Hs, Wl	Herb, vi; pl-w	Native SS 510	M
Hypoxidaceae R. Br.					
<i>Curculigo orchioides</i> Gaertn.	Talmuli	Sj, Wl	Herb, er; w	Native MAR 164	M
Xanthorrhoeaceae Dumort.					
<i>Aloe vera</i> (L.) Burm. f.	Ghritakumari	Gr, Hs	Herb, er; cv-w	Exotic SSS 2164	M, O
Smilacaceae Vent.					
<i>Smilax ovalifolia</i> Roxb.	Kumarika	Sj, Wl	Herb, vi; w	Native SS 313	M
<i>S. perfoliata</i> Lour.	Kumari lata	Sj, Wl	Herb, vi; w	Native SS 511	M
Dioscoreaceae R. Br.					
<i>Dioscorea alata</i> L.	Chupri alu	Hs, Sj	Herb, tw; cv-w	Native SSS 2167	Vg
<i>D. belophylla</i> (Prain) Voigt ex Haines	Shora alu	Hs, Lb, Wl	Herb, tw; cv-w	Native MAR 175	M
<i>D. bulbifera</i> L.	Ban alu	Hs, Lb, Sj	Herb, tw; cv-w	Native MAR 2810	M
<i>D. esculenta</i> (Lour.) Burkill	Mou alu	Gr, Sj, Wl	Herb, tw; cv-w	Native MAR 2811	Vg
<i>D. hamiltonii</i> Hook. f.	Dud alu	Gr, Sj, Wl	Herb, tw; cv-w	Native SS 129	M, Vg
<i>D. pentaphylla</i> L.	Jhum alu	Gr, Sj, Wl	Herb, tw; cv-w	Native SSS 2168	M, Vg
Orchidaceae Juss.					
<i>Acampe ochracea</i> (Lindl.) Hochr. ++	Kampera	Gr	Herb, er; w	Native GMH 5127	O
<i>A. praemorsa</i> (Roxb.) Blatt. & McCann	Mar	Gr	Herb, er; w	Native GMH 5128	O
<i>Bulbophyllum lilacinum</i> Ridl. ++	Gota parchallow	Gr	Herb, ep; w	Native GMH 5129	O
<i>B. roxburghii</i> (Lindl.) Rchb.f.	Unknown	Gr	Herb, ep; w	Native GMH 5130	O
<i>Cymbidium aloifolium</i> (L.) Sw. #	Tosabak	Gr	Herb, ep; w	Native SS 512	M, O
<i>Dendrobium anceps</i> Sw.	Asiriam	Gr	Herb, ep; w	Native GMH 5131	M, O
<i>D. aphyllum</i> (Roxb.) C.E.C. Fisch.	Fasiriam	Gr	Herb, ep; w	Native GMH 5132	M, O
<i>Geodorum densiflorum</i> (Lam.) Schltr.	Sankhamul	Sj, Wl	Herb, er; w	Native MAR 133	O
<i>Habenaria diphylla</i> Dalzell	Bhumi orchid	Gl, Lb, Wl	Herb, er; w	Native MAR 185	O
<i>Luisia brachystachys</i> (Lindl.) Blume	Luisia	Gr	Herb, ep; w	Native GMH 5133	O
<i>Nervilia gammieana</i> (Hook. f.) Pfitzer	Unknown	Wl	Herb, er; w	Exotic MAR 176	O

Table 1 contd.

Scientific name	Bangla name	Habitat	Habit	Origin RSE	Use
<i>Oberonia gammiei</i> King & Pantl. ++	Unknown	Gr	Herb, ep; w	Native GMH 5134	O
<i>Papilionanthe teres</i> (Roxb.) Schltr.	Paphoteri	Gr	Herb, ep; pl	Native GMH 5135	O
<i>Rhynchosyilis retusa</i> (L.) Blume	Kopou phool	Gr	Herb, ep; pl	Native GMH 5136	M, O
<i>Vanda tessellata</i> (Roxb.) Hook. ex G. Don.	Rasna	Op	Herb, ep; w	Native GMH 5138	M
<i>Zeuxine nervosa</i> (Wall. ex Lindl.) Benth. ex Trimen ++	Nervoxine orchid	Fl, Wl	Herb, er; w	Native GMH 5139	M

Notes: **Habitat:** Fl- Fallow land, Hs- Homestead, Gl- Grassland, Gr- Garden, MI- Marginal land, Lb- Lake bank, Bw¹- On brick wall (with complete life cycle), Bw²- Op- On plant (only seedling or sapling stage), Rs- Roadside, Sj- Scrub jungle, Wl- Woodland, Wtl- Wetland; **Habit:** cr- creeper, cv- cultivated, em- emergent, er-erect, ff- free floating, fr- floating with rooted, sm- submerged, pl- planted pr-prostrate, ps-parasite, vi-vine, l-large, m-medium, s-small, sc-scandant, w- wild; **Use:** Ap- aquarium plant, Bc-Bamboo crafts, Bv- Beverage, Cc- Cane crafts, Co- Cosmetics, Dy- Dye yielding, Ed- Edible, Fb- Fibre, Fd- Fodder, Ff- Fish feed, Fn- Fence, Fo- Forage, Fr- Fruit, Fu- Fuel, Fw- Fuel wood, Gm- Green manure, Gu- Gum, Hc- Handicrafts, Ju- Juice, M- Medicine, Mu- Mulching, O- Ornamental, Oy- Oil yielding, Nk- Not known, Pc- Pickle, Pf- Perfume, Pp- Paper pulp, Po- Poisonous, Pu- Pulse, Sb- Soil binder, Sd- Shade providing, Sf- Silkworm feed, Sp- Spice, T- Timber, Tn- Tannin, Vg- Vegetable, Wp- Water purify, Wd- Weed; *- Artificial/naturalized hybrid; #- Reported as threatened in Bangladesh; +- Exotic species introduced in the study area in recent years; ++- Native species settled in the study area in recent years. **RSE:** GMH- Gazi Mosharof Hossain, MAR- Md. Abdur Rahim, SAK- Saleh Ahammad Khan, SS- Sharmin Sultana, SSS- Shayla Sharmin Shetu.

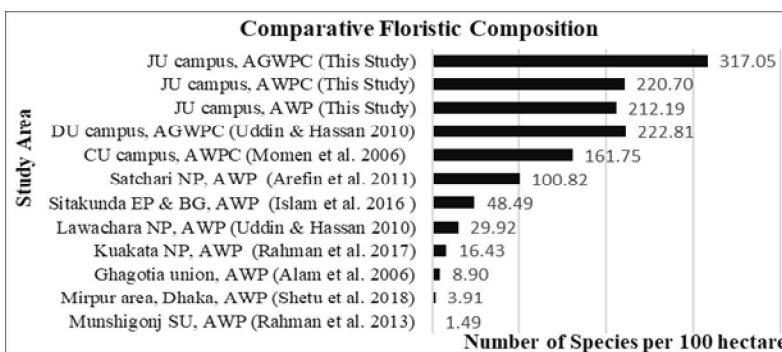


Fig. 4. Floristic composition in selected campus (DU, CU), (semi-)urban (SU), urban (Mirpur), rural (Ghagotia) and forest (EP, NP) areas of Bangladesh (CU- University of Chittagong; DU- University of Dhaka; JU- Jahangirnagar University; BG- Botanical Garden, EC- Ecopark, NP- National park; SU- Sadar upazila; A- Angiosperms; C- Cultivated; G- Gymnosperms; P- Planted; W- Wild).

Traditionally, the management of this campus is authoritative, visionary and democratic. The anthropogenic activities throughout the area are monitored and controlled through respective offices, departments and committees under the university authority. In this campus, one Botanical Garden, one Plant Conservatory and one Wildlife Rescue Centre (WRC) housing wild, cultivated and planted species have been established. A number of gardens (currently 20) are regularly set up throughout the study area that harbour mostly ornamental and medicinal or different weed species. Some open parts of the campus, composed of fallow lands, wetlands, scrub jungles or forest patches and covered with dense vegetation (Fig. 1), have been maintained as undemarcated infrastructure or settlement free area since many years. These open parts have recently been demarcated in the master plan of the campus by the administration to maintain and improve their natural features and the bio-ecological resources. Besides, a strong public awareness for conservation of biodiversity of the area is prevailing among the inhabitants.

In course of time, the original vegetation cover of this area has been changed in different magnitudes. However, based on last three decade's field observation and the comparative images on this area collected from Google Earth Pro, its present status is inferred to be richer in species composition and density in respect to its previous state (Fig. 1). It might be due to natural and artificial land transformation, increase in soil fertility, introduction of diaspores of different plant species from different regions of the country through various biotic and abiotic agents, successful adaptation of many exotic species with its diverse ecosystems, effective management of the whole campus including its open infra-structure free semi-natural areas, gardens, conservatory, WRC etc. and existing strong public awareness among the inhabitants for conservation of its biodiversity. The vegetation of this area provides the habitats for various animal groups (mammals, birds, reptiles, molluscs, amphibians, fishes, and insects etc.) including the migratory birds and supports the feeding, nesting sites and breeding ground for many of them (Mahony *et al.*, 2009; Jahan *et al.*, 2018).

In some parts of the study area, different anthropogenic activities including firing, crop and fish cultivation, grazing, leaf litter and fuel wood collection, and huge visits etc. are occasionally and irregularly functional as the major threats to its biodiversity. However, this area is still harbouring a rich biodiversity with a huge number of plant species in its diverse ecosystems and habitats including the 15 plant species threatened in Bangladesh due to which it can be considered as an exceptional semi-natural campus of a semi-urban area that can serve as an excellent center of *in situ* and *ex situ* biodiversity conservation. To achieve this goal, strengthening and improving the existing management of the campus area with adopting necessary conservation initiatives including policies, legislation, controlling and minimizing anthropogenic interferences, increasing the public awareness, improving the quality of major natural habitats and construction of the remaining boundary wall around the area etc. are highly recommended. Adequate protection, conservation and development of natural resources of this area will improve its sustainable socio-economic and ecological services besides its mainstream institutional contributions.

Acknowledgements

The authors are grateful to the Authority and Department of Botany of Jahangirnagar University and Bangladesh National Herbarium for their cooperation in this study and the people who were directly or indirectly involved in conducting and publishing this study.

References

- Ahmed, Z.U., Begum, Z.N.T., Hassan, M.A., Khondker, M., Kabir, S.M.H., Ahmad, M., Ahmed, A.T.A., Rahman, A.K.A. and Haque, E.U. (Eds). 2008-2009. Encyclopedia of Flora and Fauna of Bangladesh. Vols. **6-8** & **12**. Asiatic Society of Bangladesh, Dhaka.
- Ahmed, Z.U., Hassan, M.A., Begum, Z.N.T., Khondker, M., Kabir, S.M.H., Ahmad, M., Ahmed, A.T.A. (Eds). 2009. Encyclopedia of Flora and Fauna of Bangladesh. Vols. **9-10**. Asiatic Society of Bangladesh, Dhaka.
- Alam, M.S., Hassan, M.A. and Uddin, M.Z. 2006. A Preliminary Checklist of the angiospermic flora of Ghagotia union under Kapasia Upazila in Gazipur District, Bangladesh. *Bangladesh J. Plant Taxon.* **13**(2): 155–170.
- Ara, H., Khan, B. and Uddin, S.N. (Eds). 2013. Red Data Book of Vascular Plants of Bangladesh. Vol. **2**. Bangladesh National Herbarium, Dhaka, pp. 1–280.
- Arefin, M., Rahman, M., Uddin, M. and Hassan, M. 2011. Angiosperm flora of Satchari National Park, Habiganj, Bangladesh. *Bangladesh J. Plant Taxon.* **18**(2): 117–140.

- Cazaux, G., Carels, K. and Van Gijseghe, D. 2007. Prospects and challenges for agricultural diversification in a peri-urban region (Flanders–Belgium). *Beleidsdomein Landbouw en Visserij, Afdeling Monitorering en Studie, Brussel*, pp. 1–29.
- Cronquist, A. 1981. An integrated system of classification of flowering plants. Columbia University Press, New York, 1262 pp.
- Farhana, H., Hossain, A.B.M.E., Khan, S.A. and Islam, M.A. 1997. Ecological and distributional studies on the pteridophytic flora of Jahangirnagar University campus. *Bangladesh J. Plant Taxon.* **4**(1): 67–75.
- Freitas, E.V.D., Veloso, M.D.M. and Araújo, W.S. 2020. Urbanization alters the composition, but not the diversity and structure of Neotropical savanna woody plant communities. *Folia Geobotanica* **55**: 95–108.
- Ghani, A. 2003. Medicinal Plants of Bangladesh with Chemical Constituents and Uses. Asiatic Society of Bangladesh, Dhaka, Bangladesh.
- Goddard, M.A., Dougill, A.J. and Benton, T.G. 2009. ‘Scaling up from gardens: Biodiversity conservation in urban environments’. *Trends in Ecology and Evolution* **25**: 90–98.
- Haque, A.K.M.K., Khan, S.A., Uddin, S.N. and Shetu, S.S. 2018. An annotated checklist of the Angiospermic flora of Rajkandi Reserve Forest of Moulvibazar, Bangladesh. *Bangladesh J. Plant Taxon.* **25**(2): 187–207.
- Hooker, J.D. 1872-1897. The Flora of British India. Vols. 1-7. L. Reeve & Co., Ashford, Kent.
- Hossain, A.B.M.E., Alam, M.D., Rahim, M.A. and Rahim, M.A. 2009. A Pictorial Guide to Nursery Plants. Jahangirnagar University, Savar, Dhaka-1342, pp. 1–247.
- Hossain, A.B.M.E., Khan, S.A. and Islam, M.A. 1995. An inventory of plant diversity in relation with the ecology and environment of Jahangirnagar University. *Vegetational composition and their taxonomic identity. Bangladesh J. Life Sci.* **7**(1&2): 95–103.
- Hossain, M.K. and Pasha, M.K. 2001. Alien Invasive Plants in Bangladesh and their Impacts on the Ecosystem. *In: Assessment and Management of Alien Species that Threatened Ecosystem, Habitats and Species.* CBD Technical Paper No. 21. Secretariat of the Convention on Biological Diversity. Montreal, Canada, pp.73–75.
- Hunter, P. 2007. ‘The human impact on biological diversity’. *EMBO Reports* **8**: 316–318.
- Huq, A.M. 2019. Plant names of Bangladesh. *Ashrafia Boi Ghor*, 36, Banglabazar, Dhaka, pp. 1–578.
- Islam, M.A., Rahman, M.M. and Hossain, G.M. 2016. Floristic composition and phytodiversity status of Sitakunda Ecopark, Chittagong, Bangladesh. *Jahangirnagar University J. Biol. Sci.* **5**(1): 29–45.
- Jahan, I., Begum, S., Feeroz, M.M., Das, D.K. and Datta, A.K. 2018. Nesting pattern of birds in Jahangirnagar University Campus, Bangladesh. *Journal of Threatened Taxa* **10**(5): 11618–11635.
- Khan, M.S. and Huq, A.M. 2001. The vascular flora of Chunati wildlife sanctuary in south Chittagong. *Bangladesh J. Plant Taxon.* **8**(1): 47–64.
- Khan, M.S., Rahman, M.M. and Ali, M.A. (Eds). 2001. Red Data Book of Vascular Plants of Bangladesh. Vol. 1. Bangladesh National Herbarium, Dhaka, Bangladesh, pp. 1–179.
- Khanam, R., Khan, S.A. and Rahim, M.A. 2020. Angiosperms in Narsingdi District of Bangladesh: Class Magnoliopsida. *Bangladesh J. Plant Taxon.* **27**(1): 153–171.
- Kowarik, I. 2011. Novel urban ecosystems, biodiversity, and conservation. *Environ Pollut* **159**: 1974–1983.
- Kramer, K.U. and Green, P.S. 1990. Pteridophytes and Gymnosperms. *In: Kubitzki, K. The families and genera of vascular plants. Vol. 1.* Springer, Berlin.
- Mahony, S., Hasan, M.K., Kabir, M.M., Ahmed, M. and Hossain, M.K. 2009. A catalogue of amphibians and reptiles in the collection of Jahangirnagar University, Dhaka, Bangladesh, *Hamadryad*, **34**(1): 80–94.
- McKinney, M.L. 2006. Urbanization as a major cause of biotic homogenization. *Biological Conservation* **127**: 247–60.
- Meeus, S.J. and Gulinck, H. 2008. Semi-Urban Areas in Landscape Research: A Review. *Living Rev. Landscape Res.* **2**: 1–30.

- Momen, R.U., Hossain, M.K., Huda, S.M.S. and Khan, B.M. 2006. Assessment of plant diversity in Chittagong University campus. *J. of Forestry & Env.* **4**: 27–52.
- Pasha, M.K. and Uddin, S.B. 2013. Dictionary of Plant Names of Bangladesh (Vascular Plants). Janokalyan Prokashani, Andarkilla, Chittagong, pp. 1–320.
- Pichi, S.R.E.G. 1977. Tentamen pteridophytorum genera in taxonomicum ordinem redigendi. *Webbia* **31**: 313–512.
- POWO, 2020. Plants of the World Online. Facilitated by the Royal Botanic Gardens, Kew. Published on the Internet; <http://www.plantsoftheworldonline.org/>. Retrieved on 21 December 2020.
- Prain, D. 1903. Bengal Plants. Vol. **2**. Indian Reprint 1963. Botanical Survey of India, Calcutta, pp. 491–1013.
- Rahaman, M.A., Rahman, M.A. and Uddin, M.Z. 2017. Diversity of angiosperm flora of Kuakata National Park, Patuakhali District. Bangladesh. *J. Asiat. Soc. Bangladesh, Sci.* **43**(2): 143–159.
- Rahman, M.A. 2017. Plant Diversity in Hazarikhil Wildlife Sanctuary of Chittagong and its Conservation Management. *J. biodivers. Conserv. Bioresour. Manag.* **3**(2): 43–56.
- Rahman, M.O., Begum, M. and Ullah, M.W. 2013. Angiosperm Flora of Sadar Upazila of Munshiganj District, Bangladesh. *Bangladesh J. Plant Taxon.* **20**(2): 213–231.
- Rahman, M.S., Hossain, M.G., Khan, S.A. and Uddin, S.N. 2015. An Annotated Checklist of the Vascular Plants of Sundarban Mangrove forest of Bangladesh. *Bangladesh J. Plant Taxon.* **22**(1): 17–41.
- Roy, G.K. and Khan, S.A. 2020. Preliminary Taxonomic Study on Homestead Flora of Four Districts of Bangladesh: Magnoliopsida. *Bangladesh J. Plant Taxon.* **27**(1): 37–65.
- Schaminée, J.H.J., Janssen, J.A.M., Hennekens, S.M. and Ozinga, W.A. 2011. Large vegetation databases and information systems: new instruments for ecological research, nature conservation, and policy making. *Plant Biosyst* **145**: 85–90.
- Sharrock, S. 2012. Global Strategy for Plant Conservation: A guide to the GSPC. All the targets, objectives and facts. Botanic Gardens Conservation International (2012). Richmond, UK.
- Shetu, S.S., Khan, S.A. and Uddin, S.N. 2018. Checklist of Angiosperms extant in Mirpur area of Dhaka City. *Jahangirnagar University J. Biol. Sci.* **7**(2): 47–64.
- Siddiqui, K.U., Islam, M.A., Ahmed, Z.U., Begum, Z.N.T., Hassan, M.A., Khondker M., Rahman, M.M., Kabir, S.M.H., Ahmed, M., Ahmed, A.T.A., Rahman, A.K.T. & Haque, E.U. (Eds). 2007. Encyclopedia of Flora and Fauna of Bangladesh. Vols. **5** & **11**. Asiatic Society of Bangladesh, Dhaka.
- Sultana, M. 2012. Taxonomic and ethnobotanical studies on the angiospermic flora of Patuakhali District in Bangladesh. Ph.D. Thesis (Unpublished). Department of Botany, University of Dhaka.
- Tabassum, R. 2015. Angiospermic flora of Gazipur District, Bangladesh. Ph.D. Thesis (Unpublished). Department of Botany, University of Dhaka, pp. 1–707.
- The Plant List, 2013. The Plant List, a working list of all plant species. Version 1.1 <<http://www.theplantlist.org/>>. Accessed on 15 April, 2021.
- TROPICOS, 2021. Tropicos.org. Missouri Botanical Garden. <http://www.tropicos.org>, Missouri Botanical Garden–4344, Shaw Boulevard - Saint Louis, Missouri 63110. Accessed on 25 March 2021.
- Uddin, M.Z. and Hassan, M.A. 2004. Flora of Rema-Kalenga Wildlife Sanctuary. IUCN Bangladesh Country Office, Dhaka, Bangladesh, pp. 1–120.
- Uddin, M.Z. and Hassan, M.A. 2010. Angiosperm diversity of Lawachara National Park (Bangladesh): a preliminary assessment. *Bangladesh J. Plant Taxon.* **17**(1): 9–22.
- Uddin, M.Z. and Hassan, M.A. 2016. Plant Diversity of Dhaka University campus, Bangladesh. *J. Asiat. Soc. Bangladesh, Sci.* **42**(1): 49–68.
- Wu, Z.Y. and Raven, P.H. (Eds). 1994–2001. Flora of China. Vols. **8**, **15–18** and **24**. Missouri Botanical Garden Press, St. Louis, USA.
- Wu, Z.Y., Raven, P.H. and Hong, D.Y. (Eds). 1999–2013. Flora of China. Vols. **2–7**, **9–14**, **19–23** and **25**. Missouri Botanical Garden Press, St. Louis.

(Manuscript received on 05 June, 2020; revised on 21 February, 2021)