

FLORISTIC SURVEY OF VASCULAR PLANTS IN COASTAL DISTRICT BAGERHAT OF BANGLADESH

GAZI MOSHAROF HOSSAIN*, SALEH AHAMMAD KHAN, SHAYLA SHARMIN SHETU,
MOHAMMAD SAYEDUR RAHMAN¹, FAKHRUDDIN ALI AHMED² AND MD. HASSAN ALI

*Plant Systematics and Biodiversity Laboratory, Department of Botany,
Jahangirnagar University, Savar, Dhaka, Bangladesh*

Keywords: Flora; Angiosperms; Bagerhat; Bangladesh.

Abstract

This survey provides the basic taxonomic data on the vascular flora of the disaster-prone coastal district of Bagerhat. It has explored the occurrence of 964 species of vascular plants under 607 genera and 147 families in this district. About 68.88% of these species are native and 31.12% are exotic to Bangladesh. Pteridophytes are composed of 32 species under 22 genera of 14 families and Gymnosperms of seven species under six genera and five families. Angiosperms are comprised of 693 species of 450 genera and 99 families of Magnoliopsida (dicotyledons) that represent 71.89% of the flora, and 232 species belonging to 129 genera under 29 families of Liliopsida (monocotyledons) that constitute 24.07% of this flora. Fabaceae with 58 species is the largest dicot family, followed by Asteraceae, Euphorbiaceae, Apocynaceae, and Acanthaceae. Poaceae with 68 species is the largest monocot family, followed by Cyperaceae, Orchidaceae, Araceae and Areaceae. The genus *Cyperus* is the largest in the study area, which is followed by *Fimbristylis*, *Euphorbia*, *Ficus*, *Solanum* and *Ipomoea*. The species *Cipadessa baccifera* (Roth) Miq. of Meliaceae is rediscovered in Bangladesh. About 63.35% of species of this flora and most of the Magnoliopsida and Liliopsida are herbs, 18.94% shrubs, 15.63% trees, and 1.55% palms. Nearly 70.81% of the species are wild and the rest are planted or cultivated. 17 species are recognized as rare in the study area due to their very restricted occurrence and poor regeneration. Most of the species grow in the fallow lands, roadsides, woodlands, homesteads, marginal lands and scrub jungles. The majority of the species have more than one uses, but most are useful as medicinals (70.39%) and ornamentals (25.57%). Though the study area is under the stress of different threats, its floristic composition is still rich. We strongly recommend adopting adequate effective measures for the conservation and sustainable development of this rich flora of the coastal region.

Introduction

Floristic surveys are essential in understanding the status, extent, and assessment of plant biodiversity (WCMC, 1992). Such surveys are helpful in sustainable utilization of plant resources, plant resource-based development, exploration of alternative and closely allied species, identification and conservation of threatened plant species, and assessment, monitoring and mitigation of the adverse impacts of climate change on plant species. Due to these implications, floristic studies in various forest and non-forest areas become imperative in different areas and countries throughout the world for over a century (Ostertag *et al.*, 2014).

*Corresponding author, E-mail: gazibotju@gmail.com

¹Bangladesh National Herbarium, Ministry of Environment, Forest and Climate Change, Chiriakhana Road, Mirpur 01, Dhaka-1216, Bangladesh.

²Phytochemistry and Natural Products Laboratory, Department of Botany, Jahangirnagar University, Savar, Dhaka, Bangladesh.

Though it is inferred that Bangladesh houses rich biodiversity including approx. 5000 species of Angiosperms (Khan, 1977), a total of 3886 species are reported from this country through various floristic studies conducted sporadically so far (Hooker, 1872-1897; Prain, 1903; Uddin *et al.*, 1998; Khan and Huq, 2001; Rashid and Mia, 2001; Uddin *et al.*, 2003; Siddiqui *et al.*, 2007; Ahmed *et al.*, 2008-2009; Ahmed *et al.*, 2009; Islam *et al.*, 2009; Arefin *et al.*, 2011; Sultana, 2012; Rahman *et al.*, 2015; Tabassum, 2015; Haque *et al.*, 2018; Shetu *et al.*, 2018; Uddin and Hassan, 2018; Hossain *et al.*, 2020; Khanam *et al.*, 2020; Roy and Khan, 2020a, b; Ashrafuzzaman and Sarwar, 2021; Hossain *et al.*, 2021; Khan *et al.*, 2021a, b; Ashrafuzzaman *et al.*, 2022). It indicates that the floristic composition of many areas of this country has been partially explored or unexplored. Besides, Bangladesh is one of the countries that are most vulnerable to climate change and is ranked as one of the world's most disaster-prone areas (Choudhury, 2002; World Bank, 2005) and a good number of plant species in this country are inferred as threatened or under the risk of extinction (Khan *et al.*, 2001; Ara *et al.*, 2013). Some species with distribution in this country, as reported in old literature (Hooker, 1872-1897) or documented in herbarium collections, may have already been lost. Therefore, conducting adequate floristic surveys in the unexplored or partially explored areas of this country are very crucial to know the composition, structure and status of their plant resources.

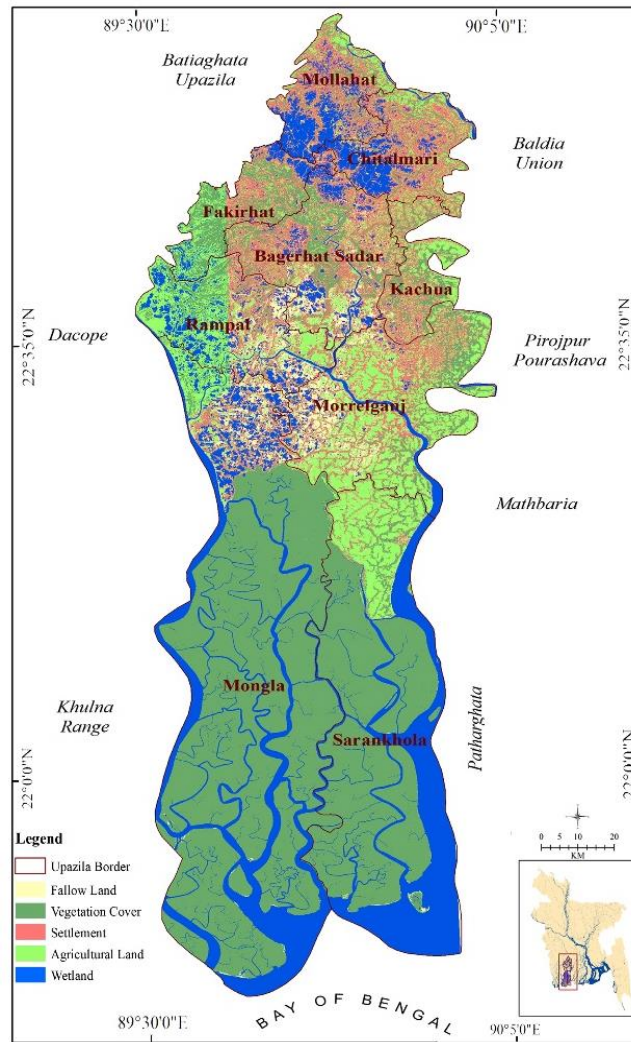
Today's one of the biggest conservation challenges is to protect and maintain the biodiversity in the coastal areas. The first key step to achieving this goal is to complete the floristic explorations and compile the updated lists of species extant in these areas (Schaminée *et al.*, 2011; Sharrock, 2012). Bagerhat district is a south-western part of the country lying beside the coast of the Bay of Bengal. This district is one of the most risk-prone coastal areas of Bangladesh and most of its habitats and ecosystems are being degraded through the consequences of different natural disasters and anthropogenic interventions, including the replacement of most of its natural vegetation by settlements, agricultural expansions, shrimp cultures and other human activities. But hitherto, this district is floristically unexplored except for its southern part covered with dense forest of Sundarban Mangrove area, the floristic composition of which is largely reported by Rahman *et al.* (2015). The floristic study of Rahman *et al.* (2015) covers the mangrove areas of this district belonging to its Mongla- and Sarankhola upazilas but it does not provide information on plant species composition and distribution in other parts of these administrative areas.

The basic taxonomic information on Bagerhat district flora is lacking. In contrast, most of the predominant natural and anthropogenic threats to the flora and plant diversity (Ali, 1999; Choudhury, 2002; Khan, 2008; Kulatunga *et al.*, 2012) are functional throughout this coastal district that can cause a heavy loss of its plant diversity and change in its floristic composition. Therefore, conducting a floristic survey throughout this district is pivotal, especially for knowing the current species composition and diversity, plant resource-based sustainable development, and providing valuable baseline data required for effective conservation of the threatened species and assessment and monitoring of the impacts of anthropogenic climate change on the plants and ecosystems of this area. Therefore, the scope and need for conducting a detailed floristic survey throughout this district are very rationale. This survey was conducted to construct a comprehensive checklist of all vascular plant species extant in the Bagerhat district area and provide basic taxonomic data on these species based on thorough floristic inventories and examination of representative specimens.

Materials and Methods

Bagerhat district, comprising an area of 3959.06 km² including 600.04 km² of forests, is located between 21°49' and 22°59' north latitudes and 89°32' and 89°98' east longitudes (District Statistics 2011 of Bagerhat, 2013). It is bounded by Gopalganj and Narail districts on the north, the Bay of Bengal on the south, Gopalganj, Pirojpur and Barguna districts on the east, and Khulna district on the west. This district is composed of nine upazilas (Fig. 1) and 75 unions with a total of 156388

hectares of cultivable lands, 8978 hectares of fallow lands and 9458 hectares of permanently waterlogged areas. The topography of this district is essentially flat, with a maximum elevation change of 36 feet and an average elevation above sea level of 11 feet. It is covered by agricultural lands, fallow lands, grasslands, wetlands and fish ponds ('gher'), scrub jungles, mangrove forests and homestead gardens etc. Bagerhat has a tropical climate with the average annual temperature varying from a minimum of 12.5°C to a maximum of 33.5°C. The rainy period lasts here from February to November but the most rain falls during July, with an average total of 325 mm. The annual average rainfall is 1710 mm (Population and Housing Consensus-2011, 2015).



Source: USGS, Landsat 08, January 2020, Compiled by Author

Fig. 1. Map of the Bagerhat District showing the upazilas and major land-use patterns.

This survey was carried out in different seasons from 2017 to 2022 throughout the Bagerhat district including the Sundarbans area. The collection, processing, drying and preservation of plant specimens were done following standard herbarium methods and techniques (Bridson and Forman,

1989; Singh and Subramaniam, 2008). The representative plant specimens of all taxa were examined at Jahangirnagar University Herbarium (JUH) and Bangladesh National Herbarium (DACB). Taxonomic identification of the specimens and verification of the nomenclatural information has been completed, the families and genera have been arranged, data on the uses of the species have been collected and the status of threatened plant species in the study area has been inferred following Khan *et al.* (2021b) and Hossain *et al.* (2021). Most of the voucher specimens are stored at JUH and some at DACB.

Data on the uses of the species were collected through interviews with the local people, and consulting the relevant literature (Ghani, 1998; van Valkenburg and Bunyapraphatsara, 2001; Siddiqui *et al.*, 2007; Ahmed *et al.*, 2008-2009). The rare status of the plant species was inferred through estimation of their current population size, occurrence, distribution range and regeneration in the area based on field observation.

Results and Discussion

This survey reveals the occurrence of a total of 964 species of vascular plants under 607 genera and 147 families within the geographical boundary of the Bagerhat district for the first time. These species constitute about 24.81% of the total 3886 plant species identified (Hossain *et al.*, 2020; Ashrafuzzaman and Sarwar, 2021; Ashrafuzzaman *et al.*, 2022) and 19.28% of the total plant species (Approx. 5000 species) estimated for Bangladesh so far (Khan, 1977).

During this study, Pteridophytes were found to be composed of 32 species under 22 genera of 14 families and Gymnosperms of seven species under six genera and five families. Among the Angiosperms, Magnoliopsida (dicotyledons) were represented by 693 species, including three subspecies and four varieties, of 450 genera and 99 families that constituted 71.89% of the vascular flora of the Bagerhat district, whereas, Liliopsida (monocotyledons) by 232 species, including one subspecies, belonging to 129 genera under 29 families, which comprised 24.07% of this flora (Table 1). About 68.88% (664 species) of this vascular flora are native, whereas, 31.12 % (300 species) are exotic to Bangladesh. Most of the species (618 species), representing 64.11% of this flora, were found to be distributed in the Sundarbans mangrove forests area of this district.

Table 1. List of vascular plant taxa of Bagerhat district, Bangladesh.

Scientific name	Bangla name	Habit	Habitat	Distribution	Use	RSE
PTERIDOPHYTA Schimp.						
Psilotaceae J.W. Griff. & Henfr.						
* <i>Psilotum nudum</i> (L.) P.Beauv.	Psilotum	Herb, ep; w	Op	Sa	M	GMH 0061
Lycopodiaceae P.Beauv. ex Mirb.						
* <i>Phlegmariurus phlegmaria</i> (L.) Holub	Fern	Herb, ep; w	Op	Mo, Sa	O	GMH 1503
Selaginellaceae Willk						
* <i>Selaginella vaginata</i> Spring	Selaginella	Herb, pr; w	MI, Wl	All upazilas	M	GMH 1501
Ophioglossaceae Martinov						
* <i>Ophioglossum reticulatum</i> L.	Sharpa jihba	Herb, er; w	Gl, Wl	Sa	M	GMH 0237
Salviniaceae Martinov						
* <i>Azolla pinnata</i> R.Br.	Khudipana	Herb, fl; w	Wtl	All upazilas	Gm	GMH 1513
* <i>Salvinia cucullata</i> Roxb. ex Bory	Indur kanipana	Herb, fl; w	Wtl	All upazilas	Gm, O	GMH 0268
* <i>S. molesta</i> D.Mitch. #	Pani dhekia	Herb, fl; w	Wtl	All upazilas	Gm, O	GMH 1518
* <i>S. natans</i> (L.) All.	Pani dhekia	Herb, fl; w	Wtl	All upazilas	Gm, O	GMH 1502
Marsileaceae Mirb.						
<i>Marsilea minuta</i> L.	Susni shak	Herb, cr; w	Wtl	Bs, Ka, Fa	Vg	GMH 1714

Scientific name	Bangla name	Habit	Habitat	Distribution	Use	RSE
* <i>M. quadrifolia</i> L. #	Susni shak	Herb, cr; w	Af, Fl, Wtl	All upazilas	Vg	GMH 0225
Lygodiaceae M. Roem.						
* <i>Lygodium flexuosum</i> (L.) Sw.	Saralata fern	Herb, cl; w	Sj, Wl	All upazilas	M	GMH 0223
<i>L. microphyllum</i> (Cav.) R.Br.	Lata dhekia	Herb, cl; w	Sj	Fa, Bs	M	GMH 1798
Pteridaceae E.D.M. Kirchn.						
* <i>Acrostichum aureum</i> L.	Tiger fern	Herb, er; w	Fm, Wl	Ka, Mo, Mr, Ra, Sa	M, Tm	GMH 0003
<i>Adiantum capillus-veneris</i> L.	Hangsapadi	Herb, ep; pl	Hs	Bs, Mo	O	SSS 3663
<i>A. caudatum</i> L.	Khopa fern	Herb, ep; w	Op, Obw	All upazilas	O	GMH 1790
* <i>A. tenerum</i> Sw. #	Biddapata	Herb, ep; w	Op, Obw	Bs, Sa	O	GMH 1504
<i>Ceratopteris pteridoides</i> (Hook.) Hieron.	Pani dhekia	Herb, er; w	Wtl	Bs, Fa, Ka	Vg	GMH 1514
* <i>C. thalictroides</i> (L.) Brongn.	Pani lettuce	Herb, er; w	Wtl	All upazilas	Vg	GMH 0128
* <i>Pteris vittata</i> L.	Dhekia	Herb, lp; w	Obw	All upazilas	M	GMH 1512
Vittariaceae Ching						
* <i>Haplopteris elongata</i> (Sw.) E.H. Crane	Fitta fern	Herb, ep; w	Op, Wl	Mo, Sa	M, O	GMH 1505
* <i>Haplopteris</i> sp.	Unknown	Herb, ep; w	Op, Wl	Sa	M, O	GMH 1800
Polypodiaceae J. Presl & C. Presl						
* <i>Drynaria quercifolia</i> (L.) J. Sm.	Pankhiraj	Herb, ep; w	Op, Wl	All upazilas	M, O	GMH 0034
* <i>Microsorium punctatum</i> (L.) Copel.	Gucha patra	Herb, ep; w	Op, Wl	All upazilas	M, O	GMH 0106
* <i>Pyrrosia nuda</i> (Giesenh.) Ching	Pyrosia	Herb, ep; w	Op, Wl	All upazilas	M	GMH 0259
<i>P. piloselloides</i> (L.) M.G. Price	Paisa dhekia	Herb, ep; w	Op, Wl	Fa	M, O	GMH 1633
* <i>Pyrrosia</i> sp.	Pyrosia	Herb, ep; w	Op, Wl	Sa	M	GMH 1700
Blechnaceae Newman						
* <i>Stenochlaena palustris</i> (Burm.f.) Bed.	Dhekia lata	Herb, cl; w	Rb, Sj, Wl	All upazilas	M, Vg	GMH 0071
Thelypteridaceae Ching ex Pic. Serm.						
* <i>Ampelopteris prolifera</i> (Retz.) Copel.	Dheki shak	Herb, cr; w	Fl, Fm, Wl	All upazilas	M	GMH 1506
* <i>Christella crinipes</i> (Hook.) Holttum	Bish dhekia	Herb, er; w	Fl, Ml, Rs	All upazilas	M	GMH 1511
* <i>Thelypteris dentata</i> (Forssk.) E.P.St.John	Datitila	Herb, cr; w	Fl, Fm, Wl	All upazilas	O, Vg	GMH 1679
Aspleniaceae Newman						
* <i>Asplenium polyodon</i> G. Forst. #	Bon dhekia	Herb, ep; w	Op	Mo, Sa	O, M	GMH 1510
Athyriaceae Alston						
* <i>Diplazium esculentum</i> (Retz.) Sw.	Dhekia shak	Herb, er; w	Fl, Fm, Wl	All upazilas	Vg	GMH 1713
GYMNOSPERMS Prantl						
Araucariaceae Henkel & W. Hochst.						
* <i>Araucaria heterophylla</i> (Salisb.) Franco #	X-mas tree	Tree, m; pl	Gr, Hs	All upazilas	O	GMH 1715
Cupressaceae Gray						
<i>Juniperus chinensis</i> L. #	China juniper	Tree, s; pl	Gr, Hs	Bs	O	GMH 1720
* <i>Platyclusus orientalis</i> (L.) Franco #	Thuja	Shrub; pl	Gr, Hs, Rs	All upazilas	O	GMH 1507
Cycadaceae Pers.						
<i>Cycas circinalis</i> L. #	Cycas	Tree, s; pl	Gr, Hs	Bs, Ch, Fa, Ra	M, O	GMH 1522
<i>C. revoluta</i> Thunb. #	Moniraj	Tree, s; pl	Gr, Hs	Bs	M, O	GMH 1519
Pinaceae Spreng. ex Rudolphi						
<i>Pinus caribaea</i> Morelet #	Pine gach	Tree, l; pl	Gr, Hs, Rs	Bs, Fa	O	GMH 1791
Zamiaceae Horan.						
<i>Zamia furfuracea</i> L.f. ex Aiton #	Zamia palm	Shrub; pl	Gr	Bs	O	SSS 3676
MAGNOLIOPSIDA Brongn.						

Scientific name	Bangla name	Habit	Habitat	Distribution	Use	RSE
Magnoliaceae Juss.						
<i>Magnolia champaca</i> (L.) Baill. ex Pierre	Champa	Tree, l; pl	Rs	Bs, Fa	M, O	GMH 1602
Annonaceae Juss.						
* <i>Annona reticulata</i> L. #	Atta, nona	Tree, s; w	Hs, Sj	All upazilas	Fr	GMH 1508
* <i>A. squamosa</i> L. #	Shorifa	Tree, s; pl	Hs	All upazilas	Fr	GMH 1509
<i>Artabotrys hexapetalus</i> (L.f.) Bhandari #	Kathali chapma	Shrub, sc; pl	Hs	Bs, Fa, Mo	M, O	GMH 1517
* <i>Huberantha pendula</i> (Capuron ex G.E. Schatz & Le Thomas) Chaowasku #	Weeping debdaru	Tree, m; pl	Rs	All upazilas	O	GMH 1525
* <i>Monoon longifolium</i> (Sonn.) B.Xue & R.M.K.Saunders #	Debdaru	Tree, l; Pl	Rs, Wl	All upazilas	O, T	GMH 1515
<i>Polyalthia suberosa</i> (Roxb.) Thwaites	Barachali	Tree, s; w	Fl, Wl	All upazilas	Fr, Fw	GMH 1750
Lauraceae Juss.						
* <i>Cassytha filiformis</i> L.	Akashbel	Herb, ps; w	Op	Sa	M	GMH 1516
<i>Cinnamomum tamala</i> (Buch.-Ham.) T. Nees & Eberm.	Tejpata	Tree, m; pl	Hs	All upazilas	Sp	GMH 1723
<i>C. verum</i> J.Presl #	Darchini	Tree, m; pl	Hs	Bs, Fa, Mo, Ra	Sp	GMH 1734
* <i>Litsea glutinosa</i> (Lour.) C.B.Rob.	Kukurchita	Tree, m; w	Sj, Wl	Bs, Fa, Ml, Sa	M	GMH 1521
<i>L. monopetala</i> (Roxb.) Pers.	Borokukurchita	Tree, m; w	Sj, Wl	Bs, Fa, Ka	M	GMH 1527
Piperaceae Giseke						
* <i>Peperomia pellucida</i> (L.) Kunth #	Luchipata	Herb, pr; w	Gl, Sj	All upazilas	M	GMH 0242
<i>Piper betle</i> L. #	Pan	Herb, cl; cv	Af	Bs, Ch, Fa, Ka	M	GMH 1520
<i>P. longum</i> L.	Pipul	Herb, cl; w	Fl, Wl	Bs, Ch, Fa, Ka	M	GMH 1526
<i>P. retrofractum</i> Vahl	Choi, Choi jhal	Herb, cl; pl	Hs, Wl	Bs, Fa	M, Sp	GMH 1550
<i>P. sarmentosum</i> Roxb. #	Jongli pan	Herb, cr; w	Gr, Sj	Bs	M	GMH 1797
Aristolochiaceae Juss.						
* <i>Aristolochia indica</i> L.	Ishwarmul	Herb, cl; w	Sj	Sa	M	GMH 0008
Nelumbonaceae A.Rich.						
<i>Nelumbo nucifera</i> Gaertn.	Paddo	Herb, fl; w	Wtl	Bs	M, O	GMH 1523
Nymphaeaceae Salisb.						
* <i>Nymphaea nouchali</i> Burm. f.	Nilshapla	Herb, fr; w	Wtl	All upazilas	M, O	GMH 1600
* <i>N. pubescens</i> Willd.	Sadashapla	Herb, fr; w	Wtl	All upazilas	O, Vg	GMH 1583
* <i>N. rubra</i> Roxb. ex Andrews	Lalshapla	Herb, fr; w	Wtl	All upazilas	M, O	GMH 1524
Ceratophyllaceae Gray						
* <i>Ceratophyllum demersum</i> L.	Kantajhanjhi	Herb, sm; w	Wtl	All upazilas	M	GMH 1786
Ranunculaceae Juss.						
<i>Clematis terniflora</i> DC.	Tarajhara	Herb, cl; pl	Gr, Hs	Bs, Mo	O	SSS 3529
<i>C. zeylanica</i> (L.) Poir.	Chagolbati	Herb, cl; w	Fl, Sj, Wl	Mr	M	SSS 3476
* <i>Ranunculus sceleratus</i> L.	Jhumka phul	Herb, er; w	Wtl	All upazilas	M	GMH 1770
Menispermaceae Juss.						
<i>Cocculus hirsutus</i> (L.) W. Theob.	Huyer, daikhai	Herb, cl; w	Sj	Bs	M	GMH 1777
* <i>Stephania japonica</i> (Thunb.) Miers	Akandi manik	Herb, cl; w	Sj, Wl	All upazilas	M	GMH 0285
<i>Tinospora crispa</i> (L.) Hook. f. & Thomson	Gulanca	Herb, cl; w	Wl	Bs, Fa	M	GMH 4073
* <i>T. sinensis</i> (Lour.) Merr.	Gulanca	Herb, cl; w	Wl	Bs, Fa, Sa	M	GMH 0074
<i>Tiliacora acuminata</i> (Lam.) Hook.fil. & Thomson	Bagbandha lata	Shrub, li; w	Sj, Wl	Bs, Fa, Ml, Ra	M, Tm	GMH 4019
Papaveraceae Juss.						
<i>Argemone mexicana</i> L. #	Sheyal kanta	Herb, er; w	Af, Fl, Rs	Ch, Fa	M	GMH 1635
Cannabaceae Martinov						

Scientific name	Bangla name	Habit	Habitat	Distribution	Use	RSE
* <i>Trema orientalis</i> (L.) Blume	Banjiga, jibon	Tree, m; w	Sj, Wl	All upazilas	Fw	GMH 0292
Moraceae Gaudich.						
<i>Artocarpus chaplasha</i> Roxb.	Chapalish	Tree, l; pl	Rs, Wl	Bs, Fa,	Fr, T	GMH 1533
* <i>A. heterophyllus</i> Lam. #	Kanthal	Tree, m; pl	Hs, Wl	All upazilas	Fr, T	GMH 1595
<i>A. lakoocha</i> Roxb.	Dewa	Tree, m; pl	Wl	Bs, Ml, Ra	Fr, T	GMH 1692
* <i>Ficus benghalensis</i> L.	Bot	Tree, l; w	Fl, Rs, Wl	All upazilas	O, Fw	GMH 0180
* <i>F. benjamina</i> L.	Bot	Tree, m; pl	Gr, Ml, Rs	Bs, Ch, Fa, M	O	GMH 1621
* <i>F. elastica</i> Roxb. ex Hornem.	Rubber bot	Tree, m; pl	Fl, Rs	Bs, Fa, Sa	O	GMH 1637
* <i>F. heterophylla</i> L. f.	Bhuidumur	Shrub; w	Sj, Wl	All upazilas	M	GMH 1644
* <i>F. hispida</i> L. f.	Kakdumur	Tree, s; w	Sj, Wl	All upazilas	M, Vg	GMH 0181
* <i>F. microcarpa</i> L.f.	Jir, kamrup	Tree, m; w	Ml, Rb, Wl	All upazilas	O, M	GMH 1630
<i>F. pumila</i> L. #	Latabot	Herb, cr; w	Obw	Bs, Fa, Sa	O	GMH 1698
* <i>F. racemosa</i> L.	Jagdumur	Tree, l; w	Sj, Fl	All upazilas	M	GMH 0182
* <i>F. religiosa</i> L.	Ashwath	Tree, l; w	Wl, Sj	Bs, Fa, Mr, Sa	M, O	GMH 0183
* <i>F. rumphii</i> Blume	Khiri bot	Tree, l; w	Fl, Rs, Wl	All upazilas	M, O	GMH 1680
* <i>F. virens</i> Aiton	Shada pakur	Tree, l; w	Fl, Rs, Wl	All upazilas	Fw, M	GMH 1625
<i>Morus alba</i> L. #	Shada tut	Tree, s; pl	Ml, Rs	Fa	Fr, Fw	SSS 3545
* <i>Streblus asper</i> Lour.	Sheora	Tree, l; w	Sj, Wl	All upazilas	Fw, M	GMH 0286
Urticaceae Juss.						
* <i>Gonostegia pentandra</i> (Roxb.) Miq.	Gonostegia	Herb, er; w	Sj	Sa	M	GMH 1640
<i>Laportea interrupta</i> (L.) Chew	Chotrapatta	Herb, cl; w	Sj Wl	Fa, Ml, Sa	M	GMH 1718
* <i>Pilea microphylla</i> (L.) Liebm. #	Latamaricha	Herb, pr; w	Obw	All upazilas	M	GMH 0252
* <i>Pouzolzia zeylanica</i> (L.) Benn.	Kullaruki	Herb, er; w	Fl, Gl, Rs	All upazilas	M	GMH 0256
Casuarinaceae R.Br.						
* <i>Casuarina equisetifolia</i> L.	Jhaw	Tree, l; pl	Ml, Rs	All upazilas	O	GMH 0124
Nyctaginaceae Juss.						
* <i>Boerhavia diffusa</i> L.	Punarnava	Herb, pr; w	Fl, Rs	Fa, Ra	M	GMH 0112
<i>Bougainvillea buttiana</i> Holtum & Standl.	Baganbilas	Shrub, sc; pl	Gr, Hs	Bs, Fa, Mo, Ra	O	GMH 1724
<i>B. glabra</i> Choisy #	Lal baganbilas	Shrub, sc; pl	Gr, Hs	Bs, Mo, Ra	O	GMH 1704
<i>B. peruviana</i> Bonpl. #	Shada baganbilas	Shrub, sc; pl	Gr, Hs	Bs, Mo	O	GMH 1705
* <i>B. spectabilis</i> Willd. #	Baganbilash	Shrub, sc; pl	Gr, Hs	All upazilas	O	GMH 1706
<i>Mirabilis jalapa</i> L. #	Sandhyamoni	Herb, er; pl	Fl, Hs	All upazilas	M, O	SSS 3548
Aizoaceae Martinov						
* <i>Sesuvium portulacastrum</i> (L.) L.	Sagornunia	Herb, pr; w	Ml	Sa	M	GMH 1747
<i>Trianthema portulacastrum</i> L.	Swetpunarnova	Herb, pr; w	Af, Fl, Rs	Fa	M, Gm	GMH 1769
Cactaceae Juss.						
<i>Acanthocalycium spiniflorum</i> (K.Schum.) Backeb. #	Cactus	Herb, er; pl	Gr, Hs,	Bs	O	SSS 3675
<i>Epiphyllum oxypetalum</i> (DC.) Haw. #	Night queen	Herb, er; pl	Gr, Hs	Bs, Mo	O	GMH 1771
<i>Ferocactus peninsulae</i> (A.A.Weber) Britton & Rose #	Ferocactus	Herb, er; pl	Gr, Hs	Bs, Mo	O	SSS 3679
<i>Mammillaria compressa</i> DC. #	Cactus	Herb, er; pl	Gr, Hs	Bs, Mo	O	SSS 3673
<i>Opuntia dillenii</i> (Ker Gawl.) Haw. #	Fhonimonosha	Shrub; w	Ml, Rs	All upazilas	He, M	GMH 1740
<i>O. ficus-indica</i> (L.) Mill. #	Fhonimonosha	Shrub; w	Ml, Rs	Ch, Mr, Mo, Ra, Sa	He, M	GMH 1751
<i>O. stricta</i> (Haw.) Haw. #	Nagphana	Shrub; w	Ml, Rs	Ch, Mr, Ra, Sa	He, M	GMH 1768

Scientific name	Bangla name	Habit	Habitat	Distribution	Use	RSE
<i>Selenicereus undatus</i> (Haw.) D.R. Hunt #	Dragan phal	Herb, cl; cv	Gr	Bs, Mo	Fr	SSS 3544
Amaranthaceae Juss.						
* <i>Achyranthes aspera</i> L.	Apang	Herb, er; w	Fl, Rs, Wl	All upazilas	M	GMH 0087
<i>Aerva lanata</i> (L.) Juss. ex Schult.	Chaya	Herb, pr; w	Fl, Rs	Bs, Ch, Fa	M, Vg	GMH 1702
<i>A. sanguinolenta</i> (L.) Blume	Lal apang	Herb, er; pl	Fl, Gr, Hs	Bs, Ml, Mr, Ra	M, O	SSS 3672
* <i>Alternanthera paronychioides</i> A. St.-Hil. #	Jhuli khata	Herb, pr; w	Af, Fl, Rs	Mr, Mo, Ra, Sa	M, Vg	GMH 0095
* <i>A. philoxeroides</i> (Mart.) Griseb. #	Henchi	Herb, fr; w	Af, Wtl	All upazilas	Gm, Vg	GMH 0096
* <i>A. sessilis</i> (L.) R.Br. ex DC. #	Malancha	Herb, pr; w	Af, Fl, Rs	All upazilas	M, Vg	GMH 0097
* <i>Amaranthus blitum</i> L. #	Goburanotey	Herb, er; w	Fl, Rs	All upazilas	M, Vg	SSS 3542
* <i>A. spinosus</i> L. #	Kantanotey	Herb, er; w	Af, Fl, Rs	All upazilas	M, Vg	GMH 0098
* <i>A. tricolor</i> L.	Lalshak	Herb, er; cv	Af/Apl	All upazilas	Vg	SSS 3532
* <i>A. viridis</i> L. #	Notey shak	Herb, er; w	Af, Fl, Rs	All upazilas	M, Vg	GMH 1773
* <i>Celosia argentea</i> L. #	Morogphul	Herb, er; pl	Hs, Rs	All upazilas	M, O	GMH 0126
* <i>Chenopodium album</i> L.	Botua shak	Herb, er; w	Af, Fl, Rs	All upazilas	M, Vg	GMH 0129
<i>Cyathula prostrata</i> (L.) Blume	Shyontula	Herb, pr; w	Fl, Rs	Bs, Fa, Ml	M	GMH 1601
* <i>Gomphrena celosioides</i> Mart. #	Bottam phul	Herb, pr; w	Gl, Fl, Rs	All upazilas	M	GMH 1589
<i>G. globosa</i> L. #	Bottum phul	Herb, er; pl	Hs, Rs	Bs, Mo, Ra	O	SSS 3531
* <i>Spinacia oleracea</i> L. #	Palong shak	Herb, er; cv	Af, Hs	All upazilas	Vg	SSS 3657
Portulacaceae Juss.						
<i>Antigonon leptopus</i> Hook. & Arn. #	Anantalata	Herb, cl; pl	Gr, Hs	Bs, Fa, Mr, Ra	O	SSS 3671
* <i>Portulaca grandiflora</i> Hook. #	Time phul	Herb, pr; pl	Hs, Rs	All upazilas	O	GMH 1531
* <i>P. oleracea</i> L. #	Boronunia	Herb, pr; w	Af, Fl, Rs	All upazilas	M, Vg	GMH 1619
<i>P. quadrifida</i> L. #	Chhoto nunia	Herb, pr; cv	Hs, Rs	Bs, Fa, Mo	O	GMH 1628
Basellaceae Raf.						
* <i>Basella alba</i> L.	Pui shak	Herb, cr; cv	Af, Hs	All upazilas	Vg	GMH 1612
Molluginaceae Bartl.						
<i>Glinus lotoides</i> L.	Alu ghash	Herb, pr; w	Af, Fl	Fa, Ra, Mo	M	GMH 1657
* <i>G. oppositifolius</i> (L.) A. DC.	Gima shak	Herb, pr; w	Af, Fl	All upazilas	M, Vg	GMH 1553
<i>Trigastrotheca pentaphylla</i> (L.) Thulin #	Khetpapra	Herb, pr; w	Af, Fl	Bs, Ra,	M	GMH 1682
Caryophyllaceae Juss.						
<i>Dianthus chinensis</i> L. #	China salpar	Herb, er; pl	Gr, Rs	Bs	O	SSS 3528
<i>D. pinifolius</i> Sm. #	Dianthus	Herb, er; pl	Gr, Rs	Bs	O	SSS 3534
<i>Polycarpon tetraphyllum</i> (L.) L. #	Gimi	Herb, er; pl	Gr, Rs	Ml	Fo	GMH 1774
Polygonaceae Juss.						
* <i>Persicaria barbata</i> (L.) H.Hara	Biskatali	Herb, er; w	Fl, Wtl	Ch, Fa, Ka, Sa	M	GMH 1726
* <i>P. glabra</i> (Willd.) M.Gómez	Biskatali	Herb, er; w	Af, Fl	Fa, Ka, Ml, Sa	M	GMH 1725
* <i>P. hydropiper</i> (L.) Delarbre	Biskatali	Herb, er; w	Af, Fl, Wtl	All upazilas	M	GMH 0244
* <i>P. lapathifolia</i> (L.) Delarbre	Bishkathali	Herb, er; w	Af, Fl, Wtl	Sa	M	MSR 493
* <i>P. orientalis</i> (L.) Spach	Bara panimarich	Herb, er; w	Fl, Wtl	All upazilas	M	GMH 0255
* <i>P. salicifolia</i> (Brouss. ex Willd.) Assenov	Polygonum	Herb, er; w	Fl, Wtl	Sa	M	MSR 492
* <i>Polygonum plebeium</i> R.Br.	Raniphul	Herb, er; w	Wtl	All upazilas	M	MSR 2249
* <i>Rumex dentatus</i> L.	Bon palang	Herb, er; w	Af, Fl, Rs	All upazilas	M	GMH 1552
* <i>R. maritimus</i> L.	Dati palang	Herb, er; w	Af, Fl, Rs	All upazilas	M	GMH 0265
* <i>R. vesicarius</i> L.	Tok palong	Herb, er; cv	Hs	Bs, Fa, Mo	M	GMH 1710

Scientific name	Bangla name	Habit	Habitat	Distribution	Use	RSE
Plumbaginaceae Juss.						
* <i>Aegialitis rotundifolia</i> Roxb.	Nunia	Shrub; w	Fm, Wl	Mo, Sa	Fw, M	GMH 0004
<i>Plumbago zeylanica</i> L.	Shada chita	Herb, er; pl	Gr, Hs	Bs	M	GMH 1544
Dilleniaceae Salisb.						
* <i>Dillenia indica</i> L.	Chalta	Tree, m; pl	Hs, Wl	All upazilas	Fr, M	GMH 1549
Dipterocarpaceae Blume						
<i>Dipterocarpus turbinatus</i> C.F.Gaertn.	Garjan	Tree, l; pl	Rs, Wl	Bs, Fa	T	GMH 1538
<i>Hopea odorata</i> Roxb.	Telshur	Tree, l; pl	Rs, Wl	Bs, Fa	T	GMH 1540
Elatinaceae Dumort.						
* <i>Bergia capensis</i> L.	Lal keshuriya	Herb, er; w	Wtl	Sa	M	GMH 1529
Theaceae Mirb.						
<i>Camellia japonica</i> L. #	Camellia	Shrub; pl	Gr	Bs	O	GMH 1762
Clusiaceae Lindl.						
* <i>Calophyllum inophyllum</i> L.	Punnul, punial	Tree, m; w	Fm, Rs	Fa, Mo, Mr, Sa	M, Oy	GMH 0017
<i>Garcinia cowa</i> Roxb. ex Choisy	Cowphal	Tree, m; pl	Hs, Wl	Fa	Fr, M	SSS 3523
<i>Mesua ferrea</i> L.	Nageshawr	Tree, s; pl	Rs	Fa, Ml, Mo	M, O	SSS 3527
Elaeocarpaceae Juss.						
<i>Elaeocarpus floribundus</i> Blume	Jalpai	Tree, m; pl	Hs	Bs, Fa, Mr	Fr, Oy	SSS 3549
Tiliaceae Juss.						
<i>Grewia asiatica</i> L.	Pholsa	Tree, s; pl	Hs, Wl	All upazilas	Fr, M	SSS 3526
<i>G. glandulosa</i> Vahl	Pathaka	Tree, s; w	Sj	Bs, Fa	M	SSS 3546
<i>Microcos paniculata</i> L.	Asar	Shrub; w	Sj, Wl	Fa	Fw, M	SSS 3539
Sterculiaceae Vent.						
<i>Abroma augusta</i> (L.) L.f.	Ulatkambal	Shrub; w	Hs, Sj	All upazilas	Fb, M	GMH 1754
<i>Melochia corchorifolia</i> L.	Tiki okra	Shrub; w	Wl	All upazilas	M	GMH 1742
* <i>Sterculia foetida</i> L.	Baksho badam	Tree, l; pl	Hs, Rs	Bs, Ch, Fa, Sa	Fr, M	GMH 1745
<i>S. villosa</i> Roxb.	Udal	Tree, l; w	Wl	Fa, Ch	M	GMH 1736
Bombacaceae Kunth.						
* <i>Bombax ceiba</i> L.	Shimul	Tree, l; w	Rs, Wl	All upazilas	Fb, M	GMH 0113
Malvaceae Juss.						
* <i>Abelmoschus esculentus</i> (L.) Moench	Dherosh	Herb, er; cv	Af	All upazilas	Vg	SSS 3521
* <i>A. moschatus</i> Medik.	Mushak dana	Shrub; w	Fl, Ml	Fa, Sa	M	GMH 0083
* <i>Abutilon indicum</i> (L.) Sweet	Petari	Shrub; w	Fl, Rs, Sj	All upazilas	Fb, M	GMH 0085
<i>Alcea rosea</i> L. #	Alcer, holyhock	Shrub; pl	Gr	Mo	O	SSS 3522
* <i>Brownlowia tersa</i> (L.) Kosterm.	Lata sundri	Shrub; w	Rb, Wl	Mo, Sa	Fw, M	GMH 0012
* <i>Ceiba pentandra</i> (L.) Gaertn. #	Shada shimul	Tree, m; pl	Hs, Rs	Bs, Fa, Sa	Fb, T	GMH 1776
* <i>Corchorus aestuans</i> L.	Jangli pat	Shrub; w	Fl, Rs, Sj	All upazilas	Fb, M	GMH 1759
<i>C. capsularis</i> L.	Bogi pat	Herb, er; cv	Af, Hs	Ch, Fa, Ra	Fb, Vg	GMH 1755
* <i>C. olitorius</i> L.	Tosha pat	Herb, er; cv	Af, Hs	Ch, Fa	Fb, Vg	SSS 3519
<i>Gossypium arboreum</i> L. #	Karpash	Shrub; cv	Af	Bs, Fa	Fb, Oy	SSS 3527
* <i>Heritiera fomes</i> Buch.-Ham.	Sundri	Tree, l; w	Wl	Mo, Sa	T	GMH 0039
<i>Hibiscus cannabinus</i> L. #	Mesta pat	Herb, er; cv	Af, Hs	Ch, Fa	Fb, Vg	SSS 3518
<i>H. mutabilis</i> L. #	Sthol paddo	Shrub; pl	Gr, Hs	Bs	O	SSS 3524
* <i>H. rosa-sinensis</i> L. #	Joba	Shrub; pl	Hs, Rs	All upazilas	O	SSS 3535
<i>H. sabdariffa</i> L. #	Chukar	Shrub; pl	Hs, Ml	All upazilas	M	SSS 3538
<i>H. schizopetalus</i> (Dyer) Hook.f. #	Jhumko jaba	Shrub; pl	Hs, Rs	All upazilas	O	SSS 3550

Scientific name	Bangla name	Habit	Habitat	Distribution	Use	RSE
* <i>H. tiliaceus</i> L.	Bhola	Shrub, sc; w	Rb, Wl	Ch, Mo, Mr, Ra, Sa	Fb, Fw	GMH 0040
<i>H. vitifolius</i> L.	Bonkarpas	Shrub; w	Sj	Fa, Ra	M, O	SSS 3551
<i>Malachra capitata</i> (L.) L. #	Bondheras	Herb, er; w	Fl, Hs, Rs	Mo	O	SSS 3553
<i>Malvaviscus arboreus</i> Dill. ex Cav. #	Morich joba	Shrub; pl	Hs, Rs	All upazilas	O	SSS 3537
* <i>Pentapetes phoenicea</i> L.	Bandhuli phul	Shrub; pl	Hs	Mo, Sa	O	GMH 1787
<i>Pterospermum acerifolium</i> (L.) Willd.	Muchkundo	Tree, l; w	MI, Wl	Bs, Fa, MI	M, T	SSS 3516
* <i>Sida acuta</i> Burm. f.	Kureta	Herb, er; w	Fl, Sj, Rs	All upazilas	M	GMH 0273
* <i>S. cordata</i> (Burm. f.) Bross. Waalk.	Pitberela	Herb, er; w	Fl, Sj, Rs	All upazilas	M	GMH 0274
* <i>S. cordifolia</i> L.	Shet berela	Herb, er; w	Fl, Rs	All upazilas	M	GMH 0275
* <i>S. rhombifolia</i> L.	Lal berela	Herb, er; w	Fl, Rs	All upazilas	Fb, M	GMH 0276
* <i>Triumfetta rhomboidea</i> Jacq.	Ban okra	Shrub; w	Fl, Rs, Sj	All upazilas	Fb, M	GMH 0295
* <i>Urena lobata</i> L.	Ban okra	Shrub; w	Fl, Sj, Rs	All upazilas	Fb, M	GMH 0297
Lecythidaceae A. Rich.						
<i>Barringtonia acutangula</i> (L.) Gaertn.	Hijal	Tree, m; w	MI, Sj, Wtl	Bs, Ch, Fa, MI	M, O	GMH 1792
* <i>B. racemosa</i> (L.) Spreng.	Shamudra hijol	Tree, m; w	Rb, Wl	Mo, Sa	M, Fw	GMH 0011
<i>Couroupita guianensis</i> Aubl. #	Naglingom	Tree, l; pl	Gr, MI	Bs	O	SSS 3507
Bixaceae Kunth						
<i>Bixa orellana</i> L. #	Bixa, shindur	Tree, s; pl	Gr	Bs	M, O	GMH 1784
Tamaricaceae Link						
* <i>Tamarix indica</i> Willd.	Nona jhaw	Tree, s; w	Fm, Wl	Mo, Sa	Fw, M	GMH 0072
Passifloraceae Juss. ex Roussel						
<i>Passiflora edulis</i> Sims #	Passion phal	Herb, cl; pl	Hs	Bs	Fr	GMH 1575
* <i>P. foetida</i> L. #	Jhumkalata	Herb, cl; w	Sj	Fa, MI, Ra	Fr, M	GMH 0241
<i>P. suberosa</i> L. #	Mela jhumka	Herb, cl; w	Rs	Ka	M	GMH 1616
<i>Turnera ulmifolia</i> L. #	Bashanti, turan	Herb, er; w	Rs	Bs, Fa, Ra	M	GMH 1530
Caricaceae Dumort.						
* <i>Carica papaya</i> L. #	Papya	Tree, m; pl	Af, Hs, Rs	All upazilas	Fr, Vg	SSS 3505
Cucurbitaceae Juss.						
<i>Benincasa hispida</i> (Thunb.) Cogn. #	Chalkumra	Herb, cl; cv	Af, Hs	All upazilas	Vg	GMH 1789
<i>Citrullus lanatus</i> (Thunb.) Matsum. & Nakai #	Tormuj	Herb, cl; cv	Af	Fa, Ra, Mo	Fr	GMH 1764
* <i>Coccinia grandis</i> (L.) Voigt	Telakucha	Herb, cl; w	Sj, Wl	All upazilas	M, Vg	GMH 0138
<i>Cucumis maderaspatanus</i> L.	Agmukhi	Herb, cl; w	Af, Fl, Sj	Fa, Ra, Sa	M	SSS 3482
<i>C. melo</i> L. #	Bangi	Herb, cl; cv	Af	Fa, Ra	Fr, Vg	SSS 3488
<i>C. sativus</i> L.	Khira, shosha	Herb, cl; cv	Af, Hs	All upazilas	Fr, Vg	GMH 1794
* <i>Cucurbita maxima</i> Duchesne #	Misti kumra	Herb, cl; cv	Af, Hs	All upazilas	M, Vg	GMH 1775
* <i>Lagenaria siceraria</i> (Molina) Standl.	Lao	Herb, cl; cv	Af, Hs	All upazilas	M, Vg	SSS 3552
* <i>Luffa acutangula</i> (L.) Roxb.	Jhinga	Herb, cl; cv	Af, Hs	All upazilas	M, Vg	GMH 1778
* <i>L. cylindrica</i> (L.) M.Roem.	Dhundal	Herb, cl; cv	Af, Hs	All upazilas	M, Vg	SSS 3541
* <i>Momordica charantia</i> L.	Korolla	Herb, cl; cv	Af, Hs	All upazilas	M, Vg	GMH 1779
* <i>M. dioica</i> Roxb. ex Willd.	Kakroll	Herb, cl; cv	Af, Hs	All upazilas	M, Vg	GMH 1772
<i>Solena amplexicaulis</i> (Lam.) Gandhi ex Saldanha & Nicolson	Rakhal shosha	Herb, cl; w	Sj	Bs, Fa, Ra	M	SSS 3484
<i>Trichosanthes costata</i> Blume	Banpatol	Herb, cl; w	Sj	Fa, MI, Mr, Ra	M	SSS 3543
* <i>T. cucumerina</i> L.	Chichinga	Herb, cl; cv	Af, Hs	All upazilas	M, Vg	SSS 3487
* <i>T. dioica</i> Roxb.	Potol	Herb, cl; cv	Af, Hs	Ch, Fa, MI	M, Vg	SSS 3501
* <i>T. tricuspidata</i> Lour. #	Makal	Herb, cl; w	Fm, Sj	Ch, Fa, Sa	M	GMH 1780
Salicaceae Mirb.						

Scientific name	Bangla name	Habit	Habitat	Distribution	Use	RSE
* <i>Flacourtia indica</i> (Burm. f.) Merr.	Bauchi	Shrub; w	Sj, Wl	Bs, Fa, Sa	Fr, M	GMH 0185
<i>F. jangomas</i> (Lour.) Raeusch.	Lukluki	Tree, s; w	Fm, Wl	Bs, Fa	Fr, M	SSS 3458
Capparaceae Juss.						
<i>Capparis zeylanica</i> L.	Katai, asaria	Shrub, sc; w	Sj	Fa	M	GMH 1793
* <i>Crateva magna</i> (Lour.) DC.	Borun, banny	Tree, s; w	Fm	Bs, Fa, Sa	M	GMH 0142
Cleomaceae Bercht. & J. Presl						
<i>Cleome houtteana</i> Schltld. #	Hurhurey	Herb, er; pl	Gr, Rs	Bs, Fa, Ra	M	SSS 3459
* <i>C. rutidosperma</i> DC. #	Nil hurhurey	Herb, er; w	Af, Fl, Rs	All upazilas	M	GMH 1795
* <i>C. viscosa</i> L.	Halud hurhurey	Herb, er; w	Af, Fl, Rs	All upazilas	M, Vg	GMH 0133
Brassicaceae Burnett						
<i>Brassica cretica</i> Lam. subsp. <i>cretica</i> #	Fulkopie	Herb, er; cv	Af, Hs	Bs, Ch, Fa, Ml	Vg	GMH 1785
* <i>B. napus</i> L. #	Sarisha	Herb, er; cv	Af, Hs	All upazilas	Lf, Oy	SSS 3508
<i>B. nigra</i> (L.) W.D.J.Koch #	Rai sarisha	Herb, er; cv	Af, Hs	Ch, Ml, Mr	Oy	SSS 3481
<i>B. oleracea</i> L. #	Badhakopie	Herb, er; cv	Gr	Bs	O	GMH 1761
* <i>B. rapa</i> L. #	Shalgom	Herb, er; cv	Af, Gr, Hs	All upazilas	Vg	GMH 4022
<i>Cardamine flexuosa</i> With. #	Bansarisha	Herb, er; w	Af, Fl	Bs, Fa, Ml	M	GMH 1783
* <i>Raphanus raphanistrum</i> subsp. <i>Sativus</i> (L.) Domin	Mula	Herb, er; cv	Af	All upazilas	Vg	SSS 3467
<i>Rorippa benghalensis</i> (DC.) H.Hara	Bel rai	Herb, er; w	Fl, Ml	Ch, Fa, Mo	M	SSS 3473
* <i>R. indica</i> (L.) Hiern	Bansarisha	Herb, er; w	Fl, Ml	All upazilas	M, Vg	GMH 0263
Moringaceae Martinov						
* <i>Moringa oleifera</i> Lamk. #	Shajna	Tree, m; pl	Hs, Ml, Rs	All upazilas	M, Vg	GMH 1796
Sapotaceae Juss.						
* <i>Madhuca longifolia</i> (J. König ex L.) J.F. Macbr.	Mohua	Tree, m; w	Rs, Wl	Bs, Fa, Sa	M, Oy	SSS 3463
* <i>Manilkara zapota</i> (L.) P.Royen #	Sopheda	Tree, m; pl	Hs	All upazilas	Fr, M	GMH 1788
* <i>Mimusops elengi</i> L.	Bokul	Tree, m; pl	Rs	All upazilas	M, O	SSS 3472
Ebenaceae Gürke						
* <i>Diospyros discolor</i> Willd. #	Bilati gab	Tree, m; pl	Hs, Rs	All upazilas	Fr, M	SSS 3556
* <i>D. malabarica</i> (Desr.) Kostel.	Deshi gab	Tree, m; w	Wl	All upazilas	Fr, M	GMH 0163
<i>D. montana</i> Roxb.	Tomal	Tree, m; w	Rs, Wl	Bs, Fa, Mo	Fw, M	GMH 1766
Myrsinaceae R.Br.						
<i>Ardisia paniculata</i> Roxb.	Barochally	Tree, s; w	Sj, Wl	Bs	M	GMH 1578
* <i>A. solanacea</i> (Poir.) Roxb.	Banjam	Shrub; w	Wl	All upazilas	M, O	GMH 0103
Primulaceae Batsch						
* <i>Aegiceras corniculatum</i> (L.) Blanco	Kholshi	Shrub; w	Wl	Mo, Sa	Hp, Fw	GMH 0005
Crassulaceae J. St.-Hil.						
* <i>Kalachoe pinnata</i> (Lam.) Pers. #	Patharkuchi	Herb, er; pl	Hs	All upazilas	M, O	GMH 1781
Rosaceae Juss.						
<i>Fragaria</i> × <i>ananassa</i> (Duchesne ex Weston) Duchesne ex Rozier #	Stawberry	Herb, cr; cv	Gr, Hs	Bs, Fa, Mo	Fr	GMH 1760
* <i>Rosa</i> × <i>centifolia</i> L. #	Golap	Shrub; pl	Hs	All upazilas	M, O	SSS 3515
<i>R. chinensis</i> Jacq. #	Jangli golap	Shrub; pl	Hs, Ml	Bs, Fa	He, M	SSS 3540
Mimosaceae R.Br.						
* <i>Acacia auriculiformis</i> A.Cunn. ex Benth #	Akashmoni	Tree, l; pl	Fl, Rs, Wl	All upazilas	T	SSS 3457
* <i>A. mangium</i> Willd. #	Mangium	Tree, l; pl	Rs, Wl	Bs, Ch, Ml, Mo	T	SSS 3494
* <i>Albizia lebbek</i> (L.) Benth.	Kalo koro	Tree, l; w	Rs, Wl	All upazilas	T	SSS 3511

Scientific name	Bangla name	Habit	Habitat	Distribution	Use	RSE
<i>A. lucidior</i> (Steud.) I.C. Nielsen ex H.Hara	Motor koroi	Tree, l; w	Rs, Wl	Bs, Fa	T	SSS 3536
* <i>A. niopoides</i> var. <i>niopoides</i> (Spruce ex Benth.) Burkart #	Raj siris	Tree, l; pl	Rs	All upazilas	T	SSS 3533
* <i>A. procera</i> (Roxb.) Benth.	Shada koroi	Tree, l; w	Rs, Wl	All upazilas	T	SSS 3517
* <i>Cynometra ramiflora</i> L.	Shigra	Tree, s; w	Fm, Wl	Mo, Mr, Ra, Sa	Fw, M	GMH 0024
* <i>Entada phaseoloides</i> (L.) Merr.	Gila lata	Shrub, li; w	Fm, Wl	Sa	M, Wp	GMH 0035
* <i>Leucaena leucocephala</i> (Lam.) de Wit #	Ipil-ipil	Tree, l; w	Fl, Rs, Wl	All upazilas	T	GMH 0213
* <i>Mimosa pudica</i> L. #	Lajjaboti	Herb, pr; w	Gl, Fl, Rs	All upazilas	M	GMH 0218
* <i>Pithecellobium dulce</i> (Roxb.) Benth. #	Khoi babla	Tree, m; w	Hs, Rs	Ch, Fa, Ra, Sa	Fr, M	GMH 0253
* <i>Samanea saman</i> (Jacq.) Merr. #	Shirish	Tree, l; pl	MI, Rs, Wl	All upazilas	T	GMH 0269
* <i>Senegalia catechu</i> (L.f.) P.J.H.Hurter & Mabb.	Khoir	Tree, m; pl	Rs	Bs, Fa, Sa	Fw, M	SSS 3496
* <i>Vachellia nilotica</i> (L.) P.J.H. Hurter & Mabb.	Babla	Tree, m; w	Fl, Rs	All upazilas	Gu, M	GMH 0086
Caesalpinaceae R.Br.						
<i>Bauhinia acuminata</i> L.	Sada kanchon	Tree, s; pl	Gr, Hs, Rs	Bs, Fa, Mo	O	SSS 3497
<i>B. purpurea</i> L.	Rakto kanchan	Tree, s; pl	Gr, Hs, Rs	Bs, Fa, Mo	O	SSS 3674
<i>Brownea coccinea</i> Jacq.	Pakhi phul	Tree, s; pl	Gr	Bs	O	SSS 3555
* <i>Caesalpinia crista</i> L.	Kutumkanta	Shrub, sc; w	Fm, Rb	Mo, Sa	M	GMH 0016
<i>C. pulcherrima</i> (L.) Sw.	Chotto radhachura	Shrub; pl	Gr, Rs	Bs, Fa, Mo, Ra	O	SSS 3479
* <i>Cassia fistula</i> L.	Badarlathi	Tree, m; w	MI, Rs	All upazilas	M, O	GMH 0121
<i>C. javanica</i> L.	Burmese shonalu	Tree, m; pl	MI, Rs	Bs, Fa, Ra	O	SSS 3504
* <i>Delonix regia</i> (Bojer ex Hook.) Raf. #	Krishnachura	Tree, l; pl	Rs	All upazilas	M, O	SSS 3480
* <i>Guilandina bonduca</i> L. #	Nata kanta	Shrub, sc; w	Sj, Fm	Fa, Sa	M, Oy	GMH 0015
* <i>Intsia bijuga</i> (Colebr.) Kuntze.	Bhaila	Tree, s; w	Rb, Wl	Mo, Sa	M	GMH 0042
<i>Peltophorum pterocarpum</i> (DC.) Backer ex K.Heyne #	Radha chura	Tree, l; pl	Rs	Bs, Fa	M, O	SSS 3525
<i>Saraca asoca</i> (Roxb.) W.J.de Wilde	Ashok	Tree, m; pl	Rs, Wl	Bs, Fa	M, O	SSS 3547
<i>Senna alata</i> (L.) Roxb. #	Dadmardan	Shrub; w	Fl, Hs, Rs	All upazilas	M	SSS 3486
* <i>S. occidentalis</i> (L.) Link #	Bara kalkesunda	Shrub; w	Fl, Rs	All upazilas	M	GMH 0122
* <i>S. siamea</i> (Lam.) H.S. Irwin & Barn. #	Minjuri	Tree, l; pl	Fl, Wl	All upazilas	Fw, O	GMH 0123
* <i>S. sophora</i> (L.) Roxb. #	Kalkeshunda	Shrub; w	Fl, Sj, Rs	Bs, Ch, Fa	M	SSS 3485
* <i>S. tora</i> (L.) Roxb. #	Kalkeshunda	Herb, er; w	Fl, Rs	All upazilas	M	GMH 0272
* <i>Tamarindus indica</i> L. #	Tetul	Tree, l; w	Hs, Wl	All upazilas	Fr, T	SSS 3530
Fabaceae Lindl.						
* <i>Abrus precatorius</i> L.	Kunch, rati	Herb, cl; w	Sj	All upazilas	M	SSS 3477
<i>Adenanthera pavonina</i> L.	Rakta chandan	Tree, m; pl	Gr, Rs	Bs, Fa, Mo	M	SSS 3655
* <i>Aeschynomene indica</i> L.	Kathshola	Shrub; w	Fl, Wtl	Fa, MI, Sa	Fo	GMH 0089
* <i>Aganope heptaphylla</i> (L.) Polhill	Panpata, satpata	Shrub, li; w	Fm, Rb	Sa	M	GMH 0006
<i>Alysicarpus</i> sp.	Unknown	Herb, er; w	MI, Sj	Bs, Fa	Gm, M	SSS 3520
<i>Arachis hypogaea</i> L. #	China badam	Herb, pr; cv	Af	Mo	Fr	SSS 3493
* <i>Brachypterum scandens</i> (Roxb.) Miq.	Mohajonilata	Shrub, li; w	Wl	Mo, Sa	M	SSS 3450
<i>Butea monosperma</i> (Lam.) Kuntze	Palash	Tree, m; pl	Rs, Wl	Bs, Ch, Fa	M, O	SSS 3455
<i>Cajanus cajan</i> (L.) Huth #	Arhar	Shrub; cv	Af, Fl, Hs	All upazilas	M, Pu	SSS 3461
* <i>C. scarabaeoides</i> (L.) Thouars	Banurkalki	Herb, cl; w	Sj	All upazilas	Gm, M	GMH 0115

Scientific name	Bangla name	Habit	Habitat	Distribution	Use	RSE
* <i>Canavalia cathartica</i> Thouars	Kalosim	Herb, cl; w	Fm, Sj	Mo, Sa	M	GMH 1782
* <i>C. rosea</i> (Sw.) DC.	Banshim	Herb, cl; w	Sd, Sj	Sa	M	GMH 0018
<i>Cicer arietinum</i> L. #	Chana, Chola	Herb, er; cv	Af	Ch, Fa, MI	Gm, Pu	SSS 3469
* <i>Clitoria ternatea</i> L. #	Aparajita	Herb, cl; w	Hs	All upazilas	M, O	SSS 3451
* <i>Crotalaria pallida</i> Aiton	Jhunjhuni	Shrub; w	Fl, Rs	All upazilas	Fb, M	SSS 3465
* <i>C. retusa</i> L.	Bil jhonjhoni	Herb, er; w	Fl, Gl, MI	Sa	Gm, M	SSS 3489
* <i>C. verrucosa</i> L.	Boro jhonjhoni	Herb, er; w	Fl, Gl, MI	Sa	Gm, M	GMH 0146
* <i>Dalbergia candenatensis</i> (Dennst.) Prain	Chanda lata	Shrub, li; w	Rb, Wl	Mo, Sa	M	GMH 1528
* <i>D. sissoo</i> Roxb. ex DC.	Sisoo	Tree, l; pl	Rs, Wl	All upazilas	T	SSS 3554
* <i>D. spinosa</i> Roxb.	Kutum kanta	Shrub, sc; w	Rb, Wl	Mo, Sa	M	SSS 3470
* <i>Derris trifoliata</i> Lour.	Kalia lata	Herb, cl; w	Wl	Ch, MI, Mo, Sa	Fb, M	SSS 3471
* <i>Erythrina fusca</i> Lour.	Kanta mandar	Tree, s; pl	MI, Rs	All upazilas	M, O	SSS 3500
<i>E. stricta</i> Roxb.	Rakta mandar	Tree, s; pl	MI, Rs	All upazilas	M, O	SSS 3498
* <i>E. variegata</i> L.	Parijat, mandar	Tree, s; pl	Fl, MI, Rs	All upazilas	M, O	SSS 3503
<i>Flemingia macrophylla</i> (Willd.) Kuntze ex Merr.	Barasalpan	Shrub; w	Sj, Wl	Ch, Fa	M	SSS 3475
* <i>Grona heterophylla</i> (Willd.) H.Ohashi & K.Ohashi	Bon motorshuti	Herb, pr; w	Fl, Gl	All upazilas	Lf, M	SSS 3502
* <i>G. triflora</i> (L.) H.Ohashi & K.Ohashi	Kulalia	Herb, pr; w	Af, Fl, Gl	All upazilas	Gm, M	SSS 3452
* <i>Indigofera trifoliata</i> L.	Ban nil	Shrub; w	Fl, Gl, Fm	Sa	Gm, M	Rahman et al. 2015
* <i>Lablab purpureus</i> (L.) Sweet #	Shim	Herb, cl; cv	Af, Hs	All upazilas	Pu, Vg	SSS 3506
<i>Lathyrus oleraceus</i> Lam. #	Motor kali	Herb, cl; cv	Af, Hs	Ch, Fa, MI, Sa	Pu	SSS 3474
* <i>L. sativus</i> L. #	Khesari	Herb, cl; cv	Af	All upazilas	Lf, Pu	SSS 3483
* <i>Leptodesmia microphylla</i> (Thunb.) H.Ohashi & K.Ohashi	Chotomodi	Herb, pr; w	Fl, Rs	Fa, MI	Gm, M	Rahman et al. 2015
* <i>Leptospron adenanthum</i> (G.Mey.) A.Delgado	Bon borboti	Herb, cl; w	Fm, Sj	Ch, Fa, Mo, Sa	Lf, Gm	SSS 3464
* <i>Medicago polymorpha</i> L. #	Treful	Herb, er; w	Gl, Fm	Sa	Gm, M	Rahman et al. 2015
* <i>Melilotus albus</i> Medik.	Sada methi	Herb, er; w	Af, Fl	Mo	M	SSS 3460
* <i>Mucuna gigantea</i> (Willd.) DC.	Bara alkushi	Herb, cl; w	Fm, Wl	Mo, Sa	M	GMH 0049
* <i>M. pruriens</i> (L.) DC.	Bichuti lata	Herb, cl; w	MI, Sj, Wl	Bs, Fa, MI	M	GMH 0231
<i>Pachyrhizus erosus</i> (L.) Urb. #	Kesur, shak alu	Herb, cl; cv	Hs, Rs	Bs, Mr, Ra, Sa	M, Vg	SSS 3490
* <i>Phaseolus coccineus</i> L. #	Begunilat shim	Herb, cl; w	MI	Sa	Pu	SSS 3462
<i>P. vulgaris</i> L. #	French sheem	Herb, cl; cv	Af, Hs	Ch, MI	Vg	SSS 3466
* <i>Pleurolobus gangeticus</i> (L.) J.St.-Hil. ex H.Ohashi & K.Ohashi	Salpani	Shrub; w	Fl, Sj, Wl	All upazilas	Fb, M	SSS 3499
* <i>Pongamia pinnata</i> (L.) Pierre	Koroch	Tree, m; w	Rb	All upazilas	Fw, M	SSS 3453
* <i>Rhynchosia minima</i> (L.) DC.	Mini bhatraj	Herb, cl; w	Fm, Gl, Sj	Sa	M	Rahman et al. 2015
* <i>R. rufescens</i> (Willd.) DC.	Shim bhatraj	Herb, cl; w	Fm, Gl, Sj	Sa	M	Rahman et al. 2015
* <i>Sesbania cannabina</i> (Retz.) Poir.	Dhonchi	Shrub; cv	Af, Fl, MI	All upazilas	Fb, Gm	SSS 3510
<i>S. grandiflora</i> (L.) Pers. #	Bokphul	Tree, s; pl	MI, Rs	Bs, Mr, Mo	Fw, Vg	SSS 3661
<i>Sohmaea laxiflora</i> (DC.) H.Ohashi & K.Ohashi	Laximodi	Shrub; w	Fl, Rs	Bs, Fa	M	SSS 3478
<i>Tadehagi triquetrum</i> (L.) H. Ohashi	Luri manda	Shrub; w	Wl, Sj	Fa, MI	Gm, M	SSS 3454

Scientific name	Bangla name	Habit	Habitat	Distribution	Use	RSE
<i>Uraria lagopodioides</i> (L.) DC.	Chakulia	Shrub; w	Sj, Wl	Fa	M	SSS 3514
* <i>Vicia hirsuta</i> (L.) Gray	Masur chana	Herb, pr; w	Af	All upazilas	Lf, Gm	SSS 3491
<i>V. lens</i> (L.) Coss. & Germ. #	Moshur	Herb, pr; cv	Af	Fa, Ml, Ra	Lf, Pu	SSS 3509
<i>V. sativa</i> L.	Ban mosur	Herb, cl; w	Af	All upazilas	Lf, Gm	SSS 3512
* <i>Vigna luteola</i> (Jacq.) Benth.	Holdey mug	Herb, cl; w	Fm, Sj	Mo, Sa	Lf, Gm	SSS 3513
<i>V. mungo</i> (L.) Hepper #	Mashkalai	Herb, pr; cv	Af, Fl, Rs	Fa, Ch, Mr, Ra	Gm, Pu	SSS 3492
* <i>V. radiata</i> (L.) R. Wilczek.	Hani mug	Herb, cl; cv	Af, Fl	Sa	Gm, Pu	Rahman <i>et al.</i> 2015
* <i>V. trilobata</i> (L.) Verdc.	Jangli mug	Herb, cl; w	Fl, Gl	Mo	Gm, Lf	SSS 3456
* <i>V. unguiculata</i> (L.) Walp. #	Borboti	Herb, cl; cv	Af, Hs	All upazilas	Pu, Vg	SSS 3495
* <i>Zornia reticulata</i> Sm. #	Unknown	Herb, er; w	Fl, Gl	Sa	M	MSR 500
Lythraceae J. St.-Hil.						
* <i>Ammannia baccifera</i> L.	Dadmari	Herb, er; w	Af, Fl, Wtl	Fa, Mo, Mr, Sa	M	GMH 1580
* <i>A. multiflora</i> Roxb. #	Acidpatta	Herb, er; w	Af, Fl, Wtl	All upazilas	M	GMH 0099
<i>Cuphea hyssopifolia</i> Kunth #	Panica	Herb, er; pl	Gr	Bs, Mo	O	GMH 1663
* <i>Lagerstroemia indica</i> L.	Jarul, furush	Tree, s; pl	Rs	All upazilas	M, O	SSS 3580
* <i>L. speciosa</i> (L.) Pers.	Jarul	Tree, l; pl	Rs, Wl	Bs, Fa, Mo	M, O	SSS 3581
* <i>Lawsonia inermis</i> L. #	Mehedi	Tree, s; pl	Hs	All upazilas	Dy, M	SSS 3604
* <i>Punica granatum</i> L. #	Dalim, bedana	Shrub; pl	Hs	All upazilas	Dy, Fr	SSS 3609
* <i>Rotala indica</i> (Willd.) Koehne	Deshi ghurni	Herb, er; w	Wtl	Sa	M	GMH 1573
<i>R. rotundifolia</i> (Buch.-Ham. ex Roxb.) Koehne	Dim ghurni	Herb, er; w	Fl, Wtl	Bs	M	GMH 1586
* <i>Sonneratia apetala</i> Buch.-Ham.	Kewra	Tree, l; w	Rb, Wl	Ch, Ka, Mo, Mr, Ra, Sa	Fr, M	GMH 0069
* <i>S. caseolaris</i> (L.) Engl.	Choila, ora	Tree, m; w	Rb	Ch, Ka, Mo, Mr, Ra, Sa	Fr, M	GMH 0070
<i>Trapa incisa</i> Siebold & Zucc. #	Paniphal	Herb, fr; w	Wtl	Fa	Fr, M	GMH 1576
<i>T. natans</i> L.	Shingra	Herb, fr; w	Wtl	Fa	Fr, M	GMH 1579
Myrtaceae Juss.						
* <i>Callistemon citrinus</i> (Curtis) Skeels #	Bottlebrush	Tree, s; pl	Hs, Rs	All upazilas	O	GMH 1618
* <i>Eucalyptus camaldulensis</i> Dehnh. #	Eucalyptus	Tree, l; pl	Rs, Wl	All upazilas	M, T	GMH 1617
* <i>Psidium guajava</i> L. #	Peyara	Tree, s; pl	Hs	All upazilas	Fr, M	SSS 3557
* <i>Syzygium cumini</i> (L.) Skeels	Kaloram	Tree, l; pl	Hs, Rs, Wl	All upazilas	Fr, T	GMH 0288
<i>S. jambos</i> (L.) Alston	Golapjam	Tree, m; pl	Gr, Hs	Bs, Fa, Mo, Sa	Fr, M	SSS 3560
<i>S. myrtifolium</i> Walp.	Bahari jam	Tree, s; pl	Gr, Rs	Bs, Fa, Ml, Mo, Mr	O	GMH 4077
* <i>S. samarangense</i> (Blume) Merr. & L.M.Perry	Jamrul	Tree, m; pl	Gr, Hs	All upazilas	Fr	SSS 3558
Onagraceae Juss.						
* <i>Ludwigia adscendens</i> (L.) H. Hara	Keshordam	Herb, fr; w	Wtl	All upazilas	M	GMH 0221
* <i>L. hyssopifolia</i> (G. Don) Exell #	Pani palong	Herb, er; w	Af, Fl, Wtl	All upazilas	Dy, M	GMH 0222
<i>L. octovalvis</i> (Jacq.) P.H.Raven	Ban labanga	Herb, er; w	Ml, Wtl	Ch, Fa, Ka, Ml	M	GMH 1536
* <i>L. perennis</i> L.	Amorkura	Herb, er; w	Fl, Gl	Fa, Mo, Ra	M	Rahman <i>et al.</i> 2015
Combretaceae R.Br.						
<i>Combretum acuminatum</i> Roxb.	Patuinia	Shrub, li; w	Fm	Sa	M	GMH 1763
<i>C. indicum</i> (L.) DeFilippis	Madobi lata	Shrub, li; pl	Hs	All upazilas	M, O	GMH 1765
* <i>Combretum</i> sp.	Unknown	Shrub, ss; w	Fm, Rb	Sa	M	GMH 1535
* <i>Lumnitzera racemosa</i> Willd.	Kirpa	Tree, s; w	Fm, Wl	Sa	Dy, Fw	GMH 0047

Scientific name	Bangla name	Habit	Habitat	Distribution	Use	RSE
* <i>Terminalia arjuna</i> (Roxb. ex DC.) Wight & Arn.	Arjun	Tree, l; pl	Rs	All upazilas	M	GMH 1532
* <i>T. bellirica</i> (Gaertn.) Roxb.	Bohera	Tree, l; pl	Rs, Wl	All upazilas	M	GMH 1541
* <i>T. catappa</i> L.	Kathbadam	Tree, l; pl	Rs	All upazilas	M, Nu	GMH 0290
<i>T. chebula</i> Retz.	Horitoki	Tree, l; pl	Rs, Wl	All upazilas	M	GMH 1534
<i>T. neotaliala</i> Capuron #	Umbrella tree	Tree, m; pl	Gr	Bs	O	GMH 1537
Rhizophoraceae Pers.						
* <i>Bruguiera gymnorhiza</i> (L.) Lam.	Lal kakra	Tree, l; w	Wl	Mo, Sa	Dy, T	GMH 0013
* <i>B. sexangula</i> (Lour.) Poir.	Shobuj kakra	Tree, l; w	Wl	Mo, Sa	Dy, T	GMH 0014
<i>Carallia brachiata</i> (Lour.) Merr.	Roshkao	Tree, m; w	Wl	Ch, Fa	Fw, M	GMH 1673
* <i>Ceriops decandra</i> (Griff.) W.Theob.	Goran	Tree, s; w	Wl	Mo, Sa	Dy, Fw	GMH 0020
* <i>Kandelia candel</i> (L.) Druce	Bhatkathi	Tree, s; w	Rb, Fm	Mo, Sa	Dy, Fw	GMH 0044
* <i>Rhizophora apiculata</i> Blume	Jhana	Tree, m; w	Rb, Fm	Mo, Sa	Fw, M	GMH 0062
* <i>R. mucronata</i> Lam.	Jhana, garjan	Tree, l; w	Rb, Fm	Mo, Sa	Dy, Fw	GMH 0063
Cornaceae Bercht. ex J. Presl						
<i>Alangium chinense</i> (Lour.) Harms.	Marleja gach	Tree, m; w	Fl, Wl	Bs, Fa	Fw, M	GMH 1678
<i>A. salviifolium</i> (L.f.) Wangerin	Aikha	Tree, m; w	Sj, Wl	Bs, Fa	M, T	GMH 1539
Loranthaceae Juss.						
* <i>Dendrophthoe falcata</i> (L.f.) Blume	Bajrangi	Shrub, ps; w	Op	All upazilas	M	GMH 0028
* <i>Macrosolen cochinchinensis</i> (Lour.) Tiegh.	Renda	Shrub, ps; w	Op	Ch, Sa	M	GMH 0048
* <i>Scurrula parasitica</i> L.	Porgacha	Shrub, ps; w	Op	All upazilas	M	GMH 0067
* <i>Viscum monoicum</i> Roxb. ex DC.	Bhanda	Herb, ps; w	Op	Mo, Sa	M	GMH 0078
Celastraceae R.Br.						
<i>Celastrus paniculatus</i> Willd.	Malkagani, kujri	Tree, m; w	MI, Wl	Bs, Fa	Fw, T	GMH 1548
* <i>Salacia chinensis</i> L.	Choit boro	Shrub, sc; w	Fm, Wl	Mo, Sa	Fr, M	GMH 0064
Euphorbiaceae Juss.						
<i>Acalypha ciliata</i> Forssk.	Pasmisur	Herb, er; w	Fl, Sj	Bs, MI	M	GMH 1542
* <i>A. indica</i> L.	Muktajhuri	Herb, er; w	Fl, Gl, Rs	All upazilas	M	GMH 1613
<i>Astraea lobata</i> (L.) Klotzsch #	Khajkata croton	Herb, er; w	Fl, Rs	Mo	M	GMH 1546
<i>Baliospermum calycinum</i> Müll.Arg.	Cup danti	Shrub; w	Sj, Wl	Bs, Fa, Ka	M	GMH 1658
<i>B. solanifolium</i> (Burm.) Suresh	Danti	Shrub; w	Sj, Wl	Bs, Fa	M	GMH 1596
* <i>Bischofia javanica</i> Blume.	Kainjal	Tree, m; w	MI, Rb, Wl	Bs, Fa, Ka, Sa	M, T	GMH 0110
<i>Bridelia stipularis</i> (L.) Blume	Harinhara	Shrub; w	MI, Sj	Fa, Ka, Sa	M	GMH 1543
* <i>Chrozophora plicata</i> (Vahl) A. Juss. ex Spreng.	Khudi okra	Herb, er; w	Af, Fl, Rs	Sa	M	GMH 1622
* <i>C. rotleri</i> (Geiseler) A.Juss. ex Spreng.	Khudi phora	Herb, er; w	Af, Fl, Rs	All upazilas	M	GMH 0131
* <i>Codiaeum variegatum</i> (L.) Rumph. ex A.Juss. #	Patabahar	Shrub; pl	Hs, MI	All upazilas	M, O	GMH 1545
* <i>Croton bonplandianus</i> Baill. #	Bandhone	Herb, er; w	Af, Fl, Rs	All upazilas	M	GMH 0147
* <i>C. caudatus</i> Geiseler.	Nan bhantur	Shrub; w	MI, Sj	Fa, MI, Ra, Sa	M	GMH 0148
* <i>C. tigilium</i> L.	Jamal gota	Herb, er; w	Fl, MI	Sa	M	MSR 509
* <i>Drypetes assamica</i> (Hook. f.) Pax & K. Hoffm.	Bon bokul	Shrub; w	Fm, Wl	Sa	M	GMH 0165
<i>Euphorbia antiquorum</i> L.	Cactus	Shrub; w	Hs, MI	All upazilas	M, O	GMH 1547
<i>E. cotinifolia</i> L. #	Lalpata	Shrub; pl	Gr, Rs	Bs, Mo	O	GMH 1611
* <i>E. hirta</i> L. #	Bara dudhia	Herb, pr; w	Fl, Gl, Rs	All upazilas	M	GMH 0177

Scientific name	Bangla name	Habit	Habitat	Distribution	Use	RSE
* <i>E. hispida</i> Boiss.	Lomahori	Herb, pr; w	Fl, Rs	Sa	M	GMH 1697
<i>E. nerifolia</i> L.	Manosha sij	Shrub; pl	Hs, MI	Bs, Ch, Fa, Mo Mr, Ra	M, O	GMH 1703
* <i>E. prostrata</i> Aiton #	Sijhori	Herb, pr; w	Fl, Rs	Bs, Mo, Mr, Ra	M	GMH 1753
<i>E. pulcherrima</i> Willd. ex Klotzsch #	Lalpata	Shrub; pl	Gr, Rs	Bs	O	GMH 1551
* <i>E. serpens</i> Kunth #	Balu madur	Herb, pr; w	Fl, Rs	Mo, Sa	M	GMH 1615
* <i>E. thymifolia</i> L. #	Swetkerui	Herb, pr; w	Fl, Gl, Rs	All upazilas	M	GMH 0178
<i>E. tirucalli</i> L. #	Narasaji	Shrub; pl	Hs, Rs	All upazilas	M, O	GMH 1614
* <i>E. tithymaloides</i> L.	Bera chita	Herb, er; w	MI, Rs	All upazilas	He, M	GMH 1603
* <i>Excoecaria agallocha</i> L.	Gewa	Tree, l; w	Wl	Ch, Ka, Mo, Mr, Ra, Sa	M, Pp	GMH 0036
<i>Jatropha curcas</i> L. #	Bherenda	Shrub; pl	Rs	Bs, Mo, Ra	He, M	GMH 1701
<i>J. gossypifolia</i> L. #	Lal bherenda	Shrub; w	Fl, Rs	Mo	He, M	GMH 1712
<i>J. podagrica</i> Hook. #	Bag bherenda	Shrub; pl	Gr	Bs, Fa	O	GMH 1554
<i>Mallotus nudiflorus</i> (L.) Kulju & Welzen	Latim, petali	Tree, l; w	Fl, MI	Ch, Fa, Mr	M, T	SSS 3559
* <i>M. repandus</i> (Willd.) Müll.-Arg.	Gunti, jhanti	Shrub, sc; w	Sj, Wl	Fa, MI, Mo	M	SSS 3575
<i>Manihot esculenta</i> Crantz #	Kassava	Tree, s; pl	MI, Rs	Ch, Fa, Rsa	M	SSS 3568
* <i>Ricinus communis</i> L. #	Bherenda	Shrub; w	Fl, Hs	All upazilas	M, Oy	SSS 3574
* <i>Shirakiopsis indica</i> (Willd.) Esser	Hurmui	Tree, s; w	Fm, Wl	Mo, Mr, Ra, Sa	M, Fp	GMH 0065
* <i>Suregada multiflora</i> (A. Juss.) Baill.	Ban naringa	Tree, s; w	Wl	Bs, Fa, Sa	Fw, M	SSS 3561
<i>Tragia involucrata</i> L.	Chotrapatta	Herb, cl; w	Sj	Bs	M	GMH 0262
<i>Trewia polycarpa</i> Benth. & Hook.f.	Pitali	Tree, m; w	Fl, MI, Rs	All upazilas	Fw, M	GMH 4027
Phyllanthaceae Martinov						
* <i>Antidesma ghaesembilla</i> Gaertn.	Khudijam	Tree, s; w	Sj, Wl	Sa	M	SSS 3573
* <i>Breynia retusa</i> (Dennst.) Alston	Silpati	Shrub; w	MI, Sj	Sa	M	GMH 1555
* <i>B. vitis-idaea</i> (Burm. f.) C.E.C. Fisch.	Vita salpoti	Shrub; w	Sj, Wl	Sa	M	GMH 1571
* <i>Flueggea virosa</i> (Roxb. ex Willd.) Royle	Khaukra	Shrub; w	Sj, Wl	Fa, Ka, Mo, Sa	M	GMH 0186
<i>Glochidion multiloculare</i> (Rottler ex Willd.) Voigt	Paniatori	Shrub; w	Sj, Rs	Fa, MI	M	SSS 3562
<i>Phyllanthus acidus</i> (L.) Skeels #	Arboroi	Tree, s; pl	Hs	All upazilas	Fr, M	SSS 3572
* <i>P. emblica</i> L.	Amloki	Tree, s; pl	Hs, Rs	All upazilas	Fr, M	SSS 3567
* <i>P. niruri</i> L. #	Bhui amla	Herb, er; w	Af, Fl, Gl	All upazilas	Dy, M	GMH 0247
* <i>P. reticulatus</i> Poir.	Chitki	Shrub; w	Fl, Sj	All upazilas	Dy, M	GMH 0248
* <i>P. urinaria</i> L.	Kalo chitki	Herb, er; w	Fl, Gl	Fa, MI, Sa	M	SSS 3566
* <i>P. virgatus</i> G. Forst.	Chitki	Shrub; w	Fl, Gl	Sa	M	SSS 3570
Putranjivaceae Endl.						
<i>Putranjiva roxburghii</i> Wall.	Putranjiva	Tree, l; w	Rs, Wl	All upazilas	M, T	GMH 1560
Rhamnaceae Juss.						
* <i>Colubrina javanica</i> Miq.	Ban boroi	Shrub, sc; w	Fm, Sj	Sa	M	GMH 1556
* <i>Ziziphus mauritiana</i> Lam.	Boroi	Tree, m; w	Hs, Wl	All upazilas	Fr, M	GMH 0303
* <i>Z. oenoplia</i> (L.) Mill.	Ban boroi	Shrub, sc; w	Sj, Wl	Bs, Fa, Ka, Sa	He, M	GMH 0304
Leeaceae Dumort.						
<i>Leea aequata</i> L.	Kak jangha	Shrub; w	Sj, Wl	Fa, Ra	M	GMH 1669
* <i>L. indica</i> (Burm. f.) Merr.	Kurkur jihwa	Shrub; w	Sj, Wl	All upazilas	Gm, M	GMH 0211
Vitaceae Juss.						
<i>Ampelocissus barbata</i> (Wall.) Planch.	Jharila	Herb, cl; w	Sj, Wl	Ch, Fa, Ra	M	GMH 1681
* <i>A. latifolia</i> (Roxb.) Planch.	Gowalia lata	Herb, cl; w	Wl	Fa, MI, Mo	M	GMH 1757
* <i>Causonis japonica</i> (Thunb.) Raf.	Golgoti lata	Herb, cl; w	Fl, MI, Sj	Sa	M	GMH 1741

Scientific name	Bangla name	Habit	Habitat	Distribution	Use	RSE
* <i>C. maritima</i> (Jackes) Jackes	Golgoti lata	Herb, cl; w	Fm, Wl	Sa	M	GMH 2104
* <i>C. trifolia</i> (L.) Mabb. & J. Wen	Angur lata	Herb, cl; w	Sj, Wl	All upazilas	Lf, M	GMH 0079
<i>Cissus adnata</i> Roxb.	Bhatia lata	Herb, cl; w	Sj, Wl	Bs, Fa	M	SSS 3571
<i>C. assamica</i> (M. A. Lawson) Craib.	Angurlata	Herb, cl; w	Fm, Sj	Sa	M	SSS 3563
<i>C. quadrangularis</i> L.	Harjora	Herb, cl; w	Hs, Rs	All upazilas	M	SSS 3569
* <i>Tetrastigma angustifolium</i> (Roxb.) Planch.	Nekungriubi	Herb, cl; w	Sj, Wl	Ch, Fa, Ra, Mo, Sa	M	GMH 0291
<i>T. leucostaphylum</i> (Dennst.) Alston	Horina lata	Herb, cl; w	Sj, Wl	Fa, Ml, Ra	M	GMH 1557
<i>Vitis vinifera</i> L. #	Angur	Herb, cl; cv	Hs	Bs, Mr	Fr	SSS 3666
Polygalaceae Hoffmanns. & Link						
* <i>Polygala chinensis</i> L.	Meradu	Herb, pr; w	Gr, Ml	Sa	M	GMH 0254
Sapindaceae Juss.						
* <i>Allophylus cobbe</i> (L.) Forsyth f.	Rakhal chita	Shrub; w	Sj, Wl	Sa	Fw, M	GMH 1574
* <i>Cardiospermum halicacabum</i> L.	Lataphutki	Herb, cl; w	Fl, Sj	All upazilas	M, Vg	GMH 1758
<i>Dimocarpus longan</i> Lour.	Ashphal	Tree, m; pl	Hs	Ch, Fa, Mo, Mr	Fr	GMH 1559
* <i>Dodonaea viscosa</i> Jacq.	Paniphul	Tree, s; w	Fm, Wl	Sa	Fw, M	GMH 0032
* <i>Lepisanthes rubiginosa</i> (Roxb.) Leenh.	Ban horina	Tree, s; w	Fl, Wl	All upazilas	Fr, Fw	GMH 1565
* <i>L. senegalensis</i> (Juss. ex Poir.) Leenh.	Gota horina	Shrub; w	Fl, Sj, Wl	All upazilas	Fw, M	GMH 1677
* <i>Litchi chinensis</i> Sonn. #	Litchu	Tree, m; pl	Hs	All upazilas	Fr	SSS 3599
Anacardiaceae R.Br.						
<i>Anacardium occidentale</i> L. #	Kajubadam	Tree, m; pl	Hs	Fa	M, Nu	SSS 3610
* <i>Lannea coromandelica</i> (Houtt.) Merr.	Jiga, jeol	Tree, s; w	Ml, Rs	All upazilas	He, Gu	GMH 0209
* <i>Mangifera indica</i> L. #	Aam	Tree, l; w	Hs, Wl	All upazilas	Fr, T	GMH 1620
* <i>Spondias dulcis</i> Parkinson #	Amrah	Tree, l; pl	Hs	All upazilas	Fr	GMH 1756
* <i>S. pinnata</i> (L. f.) Kurz	Bon amrah	Tree, l; pl	Wl	Bs, Fa, Sa	Fr	GMH 1558
Meliaceae Juss.						
* <i>Aglaiia cucullata</i> (Roxb.) Pellegr.	Amoor	Tree, s; w	Rb, Wl	Mo, Sa	M, T	GMH 0007
* <i>Aphanamixis polystachya</i> (Wall.) R.Parker	Pithraj, royna	Tree, m; w	Hs, Wl	All upazilas	M, Oy	GMH 0101
* <i>Azadirachta indica</i> A. Juss.	Neem	Tree, m; w	Rs, Wl	All upazilas	M, T	GMH 0108
<i>Cipadessa baccifera</i> (Roth) Miq.	Sibbeki	Tree, s; w	Rs, Wl	Bs	M	GMH 1610
<i>Khaya anthotheca</i> (Welw.) C.DC. #	Lombu	Tree, l; pl	Rs	All upazilas	T	GMH 1597
* <i>Melia azedarach</i> L.	Ghora neem	Tree, m; pl	Ml, Rs	All upazilas	M, T	GMH 1609
<i>Swietenia macrophylla</i> King #	Bara mehagani	Tree, l; pl	Hs, Ml, Rs	All upazilas	T	SSS 3606
* <i>S. mahagoni</i> (L.) Jacq. #	Mehagani	Tree, l; pl	Hs, Rs	All upazilas	T	SSS 3591
* <i>Toona ciliata</i> M.Roem.	Toon, rongi rata	Tree, l; w	Rs, Wl	All upazilas	Dy, M	SSS 3603
* <i>Xylocarpus granatum</i> J.Koenig	Dhondal	Tree, m; w	Rb, Wl	Sa	M, T	GMH 0081
* <i>X. moluccensis</i> (Lam.) M.Roem.	Poshur	Tree, m; w	Wl	Mo, Sa	M, T	GMH 0082
Rutaceae Juss.						
* <i>Aegle marmelos</i> (L.) Corrêa	Bel	Tree, m; w	Hs, Ml, Wl	All upazilas	Fr, M	SSS 3600
* <i>Citrus aurantiifolia</i> (Christm.) Swingle	Lebu	Shrub; pl	Hs	All upazilas	Fr	SSS 3564
* <i>C. maxima</i> (Burm.) Merr. #	Jambura	Tree, s; pl	Ml, Hs	All upazilas	Fr	SSS 3585
* <i>Glycosmis pentaphylla</i> (Retz.) DC.	Datmajoni	Shrub; w	Fl, Sj, Wl	All upazilas	M	GMH 0188
* <i>Limonia acidissima</i> L.	Kadbel	Tree, m; pl	Ml, Hs	All upazilas	Fr	GMH 1577
* <i>Merope angulata</i> (Willd.) Swingle	Bonlebu	Shrub; w	Fm, Rb	Sa	M	GMH 1561
<i>Murraya koenigii</i> (L.) Spreng.	Curry patta	Tree, s; w	Fl, Wl	Bs, Fa, Ka, Ml	M, Sp	GMH 1666
* <i>M. paniculata</i> (L.) Jack	Kamini	Tree, s; pl	Rs, Wl	All upazilas	M, O	GMH 1670

Scientific name	Bangla name	Habit	Habitat	Distribution	Use	RSE
Oxalidaceae R.Br.						
* <i>Averrhoa bilimbi</i> L. #	Bilimbi	Tree, s; pl	Hs	Bs, Ch, Fa, Ka, Fr, M	Mo, Mr	SSS 3608
* <i>A. carambola</i> L. #	Kamranga	Tree, s; pl	Hs	All upazilas	Fr, M	SSS 3565
* <i>Oxalis corniculata</i> L. #	Amrul	Herb, pr; w	Af, Gl, Rs	All upazilas	M, Vg	GMH 0238
<i>O. debilis</i> Kunth #	Golapi amrul	Herb, pr; w	Gr, Hs	Bs, Mo	O	SSS 3669
Balsaminaceae A. Rich.						
* <i>Impatiens balsamina</i> L. #	Dopati	Herb, er; pl	Hs, MI	All upazilas	M, O	GMH 1582
<i>Hydrocera triflora</i> (L.) Wight & Arn.	Domuti	Herb, er; w	MI	Fa	M	GMH 1662
Araliaceae Juss.						
* <i>Polyscias fruticosa</i> (L.) Harms #	Tikosaya pata	Shrub; pl	Gr, Hs	Bs	O	GMH 1675
* <i>P. scutellaria</i> (Burm. f.) Fosberg, #	Saya pata	Shrub; pl	Gr, Hs	Bs, Mo	O	GMH 1651
Apiaceae Lindl.						
* <i>Centella asiatica</i> (L.) Urb.	Thankuni	Herb, cr; w	Af, Fl, MI	All upazilas	M	GMH 0127
* <i>Coriandrum sativum</i> L. #	Dhonia	Herb, er; cv	Af, Fl, Hs,	Fa, MI, Sa	M, Sp	GMH 1562
* <i>Daucus carota</i> L. #	Gajor	Herb, er; cv	Af	Fa, MI, Mo, Mr	Vg	GMH 1567
* <i>Eryngium foetidum</i> L. #	Bilati dhoneya	Herb, er; w	Af, Hs	Bs, Mr, Ra, Sa	M, Sp	GMH 1631
* <i>Hydrocotyle sibthorpioides</i> Lam.	Kuti thankuni	Herb, cr; w	Fl, Rs	Mo	M	GMH 1676
* <i>Oenanthe benghalensis</i> Benth. & Hook.f.	Ban dhonia	Herb, er; w	Fl, Gl, MI	All upazilas	M	GMH 1707
* <i>O. thomsonii</i> C.B. Clarke #	Panturashi	Herb, er; w	Af, Fl	Sa	M	GMH 1737
* <i>Pimpinella heyneana</i> (DC.) Benth.	Pimpin	Herb, er; w	Fl, MI	Sa	M	MSR 1314
Gentianaceae Juss.						
<i>Centaurium centaurioides</i> (Roxb.) Rolla Rao & Hemadri	Unknown	Herb, er; w	Fl, Rs	Mo	M	GMH 1733
* <i>Hoppea dichotoma</i> Willd.	Hoppia	Herb, er; w	Gr	Sa	M	GMH 1568
Apocynaceae Juss.						
* <i>Allamanda cathartica</i> L. #	Ghonta phul	Shrub; pl	Hs, Rs	All upazilas	O	GMH 1752
* <i>Alstonia scholaris</i> (L.) R.Br.	Chhatim	Tree, l; w	Rs, Wl	All upazilas	M, T	GMH 0094
<i>Asclepias curassavica</i> L.	Kakturi	Herb, er; w	Fl, Rs, Sj	Bs, Fa, Mo	M, O	GMH 1664
* <i>Calotropis gigantea</i> (L.) W.T.Aiton	Akondo	Shrub; w	MI, Rs	All upazilas	Fb, M	GMH 0119
* <i>C. procera</i> (Aiton) W.T.Aiton	Shda akondo	Shrub; w	Rs	Fa, Ra, Mr, Sa	Fb, M	GMH 0120
<i>Carissa carandas</i> L.	Karamcha	Shrub; pl	Hs, Sj	All upazilas	Fr	SSS 3578
<i>Cascabela thevetia</i> (L.) Lippold #	Kolkey phul	Tree, s; pl	Hs	Bs, Ch, Mo, Mr, Ra	M, O	SSS 3598
* <i>Catharanthus roseus</i> (L.) G.Don #	Noyantara	Herb, er; w	Hs, Rs	All upazilas	M, O	GMH 0125
* <i>Cerbera odollam</i> Gaertn.	Dahur	Tree, s; w	Fm, Wl	Mo, Sa	Fb, M	GMH 0019
* <i>Ceropegia lucida</i> Wall.	Lucipegia	Herb, cl; w	Fm	Sa	M	MSR 588
* <i>Dischidia nummularia</i> R.Br.	Coin plant	Herb, cl; w	Op	Sa	M, O	GMH 1749
* <i>Dregea volubilis</i> (L.f.) Benth. ex Hook.f.	Jukti phul	Herb, cl; w	Wl	Fa, MI, Ra, Sa	Fb, M	GMH 0164
* <i>Finlaysonia obovata</i> Wall.	Mamakola	Herb, cl; w	Rb, Wl	Mo, Sa	Fb, M	GMH 0037
* <i>Hoya lanceolata</i> Wall. ex D.Don	Futki lata	Herb, ps; w	Op; Wl	Sa	Fb, M	GMH 1744
* <i>H. verticillata</i> (Vahl) G. Don var. <i>verticillata</i>	Futki lata	Herb, ps; w	Op; Wl	All upazilas	Fb, M	GMH 0196
* <i>Hemidesmus indicus</i> (L.) R.Br.	Anantomul	Herb, cl; w	Fl, Gl	Bs, Fa, Sa	Fb, M	GMH 0194
<i>Holarrhena antidysenterica</i> (L.) Wall. ex A. DC.	Kurchi	Tree, s; w	MI, Sj, Wl	Fa, Mo	M	SSS 3678
* <i>Ichnocarpus frutescens</i> (L.) W.T.Aiton	Parallia lata	Herb, cl; w	Fl, Sj, Wl	All upazilas	Fb, M	GMH 0200

Scientific name	Bangla name	Habit	Habitat	Distribution	Use	RSE
* <i>Leptadenia reticulata</i> (Retz.) Wight & Arn.	Mada	Herb, cl; w	Fm, Sj	Sa	M	GMH 4049
<i>Nerium oleander</i> L. #	Rakta karobi	Tree, s; pl	Hs, Rs	Bs, Fa, Mo, Mr	M, O	GMH 1748
* <i>Parsonia alboflavescens</i> (Dennst.) Mabb.	Pasonsi	Herb, cl; w	Fm, Rb	Mo, Sa	Fb, M	GMH 0055
* <i>Pentatropis capensis</i> (L. f.) Bullock	Panchabrti lata	Herb, cl; w	Sj, Wl	Sa	M	GMH 1563
<i>Pergularia daemia</i> (Forssk.) Chiov.	Chagalbati	Herb, cl; w	Sj, Rs	Sa	Fb, M	GMH 1746
<i>Plumeria alba</i> L. #	Shada kathgolap	Tree, m; pl	Hs, Rs	All upazilas	M, O	SSS 3576
<i>P. pudica</i> Jacq.	Nag dahur	Tree, s; pl	Gr	Bs, Fa, Mo	O	SSS 3662
<i>P. rubra</i> L. #	Lal kathgolap	Tree, m; pl	Hs, Rs	Bs, Mo	M, O	SSS 3590
* <i>Oxystelma esculentum</i> (L. f.) Sm.	Dudhia lata	Herb, cl; w	Fm, Sj	Sa	M, O	GMH 1581
<i>Rauvolfia serpentina</i> (L.) Benth. ex Kurz	Sarpogondha	Herb, er; w	MI, Wl	Fa	M, O	GMH 1588
* <i>Sarcobolus carinatus</i> Wall.	Bawali lata	Herb, cl; w	Fm, Wl	Sa	M	GMH 1564
* <i>S. globosus</i> Wall.	Bawali lata	Herb, cl; w	Fm, Wl	Mo, Sa	M, Vg	GMH 0066
* <i>Tabernaemontana divaricata</i> (L.) R.Br. ex Roem & Schult.	Tagar	Shrub; w	Rs, Sj, Wl	All upazilas	M, O	SSS 3601
<i>Telosma cordata</i> (Burm. f.) Merr.	Kanja lata	Herb, cl; w	Sj, Wl	Fa	M	SSS 3580
* <i>Vincetoxicum indicum</i> (Burm.f.) Mabb.	Antamul	Herb, cl; w	Fm, Sj	Bs, Fa, Ra, Sa	Fb, M	GMH 0076
* <i>Vincetoxicum</i> sp.	Unknown	Herb, cl; w	Fm, Wl	Mo, Sa	M	GMH 1590
Solanaceae Juss.						
* <i>Capsicum annuum</i> L. #	Morich	Herb, er; cv	Af, Hs	All upazilas	Sp	SSS 3602
<i>Cestrum diurnum</i> L. #	Dibahena	Shrub; pl	Hs	Bs, Ka	M, O	GMH 1572
* <i>C. nocturnum</i> L. #	Hasnahena	Shrub; pl	Hs	All upazilas	M, O	SSS 3597
* <i>Datura metel</i> L. #	Sada dhutra	Shrub; w	Fl, Rs	All upazilas	M	GMH 0158
* <i>Nicotiana plumbaginifolia</i> Viv. #	Ban tamak	Herb, er; w	Af, Fl, Rs	All upazilas	M	GMH 0233
<i>Petunia hybrida</i> E. Vilm.	Petunia	Herb, er; pl	Gr, Hs	Bs	O	SSS 3593
* <i>Physalis angulata</i> L. #	Ban tepari	Herb, er; w	Af, Fl, Rs	All upazilas	M	GMH 0250
<i>P. peruviana</i> L. #	Tepari	Herb, er; w	Af, Fl, Rs	Bs, Ch, Fa, Mo	M	GMH 1584
* <i>Solanum aculeatissimum</i> Jacq. #	Akuli begun	Herb, pr; w	Fl, MI, Rs	Mo, Ra, Sa	M	GMH 1743
* <i>S. americanum</i> Mill. #	Tit begun	Herb, er; w	Fl, Gl, Rs	All upazilas	M	GMH 1599
* <i>S. lycopersicum</i> L. #	Tomato	Herb, pr; cv	Af	All upazilas	Vg	SSS 3577
* <i>S. melongena</i> L. #	Begun	Shrub; w	Af, Hs	All upazilas	Vg	GMH 1569
* <i>S. nigrum</i> L.	Kakmachi	Herb, er; w	Fl, Rs	All upazilas	M	GMH 0279
* <i>S. sisymbriifolium</i> Lam. #	Kanta begun	Herb, pr; w	Fl, Rs	Bs, Mo, Mr, Ra, Sa	M	GMH 0281
* <i>S. torvum</i> Sw. #	Gota begun	Shrub; w	Fl, Sj, Rs	All upazilas	M, Vg	GMH 0280
<i>S. tuberosum</i> L. #	Golalu	Herb, pr; cv	Af	All upazilas	Vg	GMH 1626
* <i>S. violaceum</i> Ortega	Phutki begun	Shrub; w	Af, Fl, Rs	All upazilas	M	GMH 0278
* <i>S. virginianum</i> L.	Kantikari	Herb, pr; w	Sd, Fm	Fa, Mo, Ra, Sa	M, Vg	GMH 0068
Convolvulaceae Juss.						
<i>Aniseia martinicensis</i> (Jacq.) Choisy #	Shadamati	Herb, cl; w	MI, Rs	Fa, MI, Ka	M	GMH 1566
<i>Argyreia capitiformis</i> (Poir.) Ooststr.	Doitta lata	Herb, cl; w	Sj, Wl	Fa, MI	M	GMH 1739
<i>A. roxburghii</i> (Wall.) Arn. ex Choisy	Argori lata	Herb, cl; w	Sj, Wl	Fa	M	GMH 1711
* <i>Bonamia semidigyna</i> (Roxb.) Hallier f.	Gandabhadi	Herb, cl; w	Fm, Sj	Sa	M	MSR 655
* <i>Camonea umbellata</i> (L.) A.R. Simões & Staples #	Goria lata	Herb, cl; w	Fl, Gl, Rs	Bs, Fa, Ra	M, O	GMH 1722
* <i>Evolvulus nummularius</i> (L.) L. #	Bhui okra	Herb, cr; w	Fl, Gl, Rs	All upazilas	M, Sb	GMH 0179
* <i>Hewittia malabarica</i> (L.) Suresh	Hiwet	Herb, cl; w	Fl, Fm, MI	Sa	M	GMH 1585

Scientific name	Bangla name	Habit	Habitat	Distribution	Use	RSE
<i>Ipomoea alba</i> L. #	Morning glory	Herb, cl; w	Fl, Wl	BS	M, O	GMH 1687
* <i>I. aquatica</i> Forssk.	Kalmi shak	Herb, cr; w	Af, Wtl	All upazilas	Vg	GMH 0202
* <i>I. batatas</i> (L.) Lam. #	Misti alu	Herb, cr; cv	Af, Hs	All upazilas	Vg	GMH 1716
<i>I. cairica</i> (L.) Sweet	Kolmi lata	Herb, cl; w	MI	Fa	M, O	GMH 1699
* <i>I. carnea</i> subsp. <i>fistulosa</i> (Mart. ex Choisy) D.F.Austin #	Dhol kalmi	Shrub; w	Fl, MI	All upazilas	He, Sb	GMH 0203
* <i>I. littoralis</i> Blume	Gang kalmi	Herb, cl; w	Fm, Sj	Sa	M, O	Rahman <i>et al.</i> 2015
* <i>I. obscura</i> (L.) Ker Gawl.	Kura kalmi	Herb, cl; w	Fl, MI	Bs, Fa, Sa	M	GMH 1587
* <i>I. pes-caprae</i> (L.) R.Br.	Chagalkhuri	Herb, cr; w	Af, Hs	Sa	M, Sb	GMH 0043
* <i>Operculina turpethum</i> (L.) S. Manso	Dudh kalmi	Herb, cl; w	Fl, Fm, Wl	Bs, Ch, Fa, Sa	M	GMH 1604
* <i>Stictocardia tilifolia</i> (Desr.) Hallier.f.	Ban kalmi	Herb, cl; w	Fl, Fm, Wl	Fa, Mo, Sa	M	GMH 1730
Cuscutaceae Dumort.						
* <i>Cuscuta chinensis</i> Lam.	Sharno lata	Herb, cl; w	Op	All upazilas	M	SSS 3579
* <i>C. reflexa</i> Roxb.	Sharno lata	Herb, cl; w	Op	All upazilas	M	GMH 0151
Menyanthaceae Dumort.						
<i>Nymphoides hydrophylla</i> (Lour.) Kuntze	Chand mala	Herb, fr; w	Wtl	Bs, Fa, Mr	M	SSS 3605
* <i>N. indica</i> (L.) Kuntze	Panchuli mala	Herb, fr; w	Wtl	All upazilas	M, Vg	SSS 3607
Hydroleaceae R.Br. ex Edwards						
* <i>Hydrolea zeylanica</i> (L.) Vahl	Kasschera	Herb, pr; w	Wtl	Sa	M	GMH 1636
Boraginaceae Juss.						
* <i>Cordia dichotoma</i> G.Forst.	Bohola, bola	Tree, m; w	Sj, Wl	All upazilas	Fw, M	GMH 0142
* <i>Heliotropium curassavicum</i> L. #	Nona hatisur	Herb, pr; w	Fl, Rs	Mo, Ra, Sa	M, Vg	GMH 1591
* <i>H. indicum</i> L.	Hatisur	Herb, er; w	Af, Fl, Rs	All upazilas	M	GMH 0193
Verbenaceae J. St.-Hil.						
* <i>Duranta erecta</i> L. #	Duranto	Shrub; pl	MI, Rs	All upazilas	He, M	SSS 3589
<i>Lantana camara</i> L. #	Kutuskanta	Shrub; w	Rs, Sj, Wl	Mo	Fw, M	SSS 3595
* <i>Lippia alba</i> (Mill.) N.E.Br. ex Britton & P.Wilson #	Motmotia	Shrub; w	Fl, Sj	All upazilas	M	GMH 0219
* <i>Phyla nodiflora</i> (L.) Greene	Vuiokra	Herb, cr; w	Fl, Gl, Rs	All upazilas	M	GMH 0220
Lamiaceae Martinov						
* <i>Anisomeles indica</i> (L.) Kuntze.	Gobura	Herb, er; w	Fl, Wl	All upazilas	M	GMH 1629
<i>Callicarpa macrophylla</i> Vahl	Boro bormala	Tree, m; w	Fl, Sj	Bs	M	GMH 1593
<i>C. tomentosa</i> (L.) L.	Bastara	Tree, s; w	Fl, Sj	Bs	M	GMH 1606
* <i>Clerodendrum indicum</i> (L.) Kuntze	Bamunhatti	Shrub; w	Fl, Sj, Wl	All upazilas	M	GMH 0135
* <i>C. infortunatum</i> L.	Bhat	Shrub; w	Fl, Rs, Wl	All upazilas	M	GMH 0136
<i>C. japonicum</i> (Thunb.) Sweet	Raktabhat	Shrub; pl	MI, Rs	Bs	O	GMH 1738
<i>Coleus scutellarioides</i> (L.) Benth. #	Coleus	Herb, er; w	Gr, Rs, Hs	Bs, Mo	O	SSS 3596
* <i>Gmelina arborea</i> Roxb.	Gamari	Tree, l; pl	Rs, Wl	All upazilas	M, T	SSS 3581
* <i>Hypis capitata</i> Jacq. #	Tata tokma	Herb, er; w	Fl, Rs, Sj	All upazilas	M	GMH 0198
* <i>Leucas lavandulifolia</i> Sm.	Shetodron	Herb, er; w	Af, Fl, Rs	All upazilas	M	GMH 0215
* <i>Leonurus sibiricus</i> L.	Roktodron	Herb, er; w	Fl, Rs	Bs, Fa, Mo, Mr, M Sa	SSS 3588	
<i>Mentha spicata</i> L. #	Pudina pata	Herb, pr; cv	Gr, Hs	All upazilas	M	SSS 3594
* <i>Mesosphaerum suaveolens</i> (L.) Kuntze #	Tokma	Herb, er; w	Fl, Rs, Sj	Bs, Fa, Mo, Sa	M	GMH 0199
* <i>Ocimum americanum</i> L.	Tulshi	Herb, er; w	Fl, Hs	All upazilas	M	GMH 0235
* <i>O. tenuiflorum</i> L.	Kalo tulshi	Herb, er; w	Fl, Hs	Bs, Fa, MI	M	GMH 1608

Scientific name	Bangla name	Habit	Habitat	Distribution	Use	RSE
<i>Pogostemon benghalensis</i> (Burm.f.) Kuntze	Jui-lata, bakoha	Shrub; w	Rs	Fa	M	GMH 1643
* <i>Premna serratifolia</i> L.	Gambari	Shrub; w	Fm, Sj	Fa, Ka, Sa	M	GMH 0257
<i>Rothea serrata</i> (L.) Steane & Mabb.	Bamanhati	Shrub; w	Sj, Wl	Fa, Mo	M	GMH 0134
* <i>Salvia plebeia</i> R.Br.	Bhuitulsi	Herb, er; w	Fl, Ml, Rb	Bs, Sa	M	GMH 1592
<i>S. splendens</i> Sellow ex Schult. #	Lal sagi, salvia	Herb, er; pl	Hs, Rs	Bs, Mo	O	SSS 3584
<i>Salvia</i> sp.	Unknown	Herb, er; w	Rs	Mo	M	GMH 1650
<i>Tectona grandis</i> L. f.	Shegun	Tree, l; pl	Rs, Wl	All upazilas	T	SSS 3592
* <i>Vitex negundo</i> L.	Nishinda	Shrub; w	Fl, Sj, Rs	All upazilas	M	GMH 0301
* <i>V. trifolia</i> L.	Chotonishinda	Shrub; w	Ml, Rs	Sa	M	GMH 1594
* <i>Volkameria heterophylla</i> Vent.	Shia vat	Shrub, sc; w	Fm, Rb	Sa	M, O	GMH 3488
* <i>V. inermis</i> L.	Shia vat	Shrub, li; w	Fm, Rb	Ka, Mo, Mr, Sa	M, O	GMH 0021
Plantaginaceae Juss.						
* <i>Adenosma indianum</i> (Lour.) Mirr.	Borokesuti	Herb, er; w	Gl, Ml	Sa	M	Rahman et al. 2015
* <i>Bacopa monnieri</i> (L.) Wettst.	Brammi	Herb, pr; w	Fl, Wtl	All upazilas	M, Vg	GMH 0109
* <i>Limnophila aromatica</i> (Lam.) Merr.	Pani karpur	Herb, er; w	Wtl	Sa	M	GMH 1607
<i>L. heterophylla</i> (Roxb.) Benth.	Patakutra	Herb, fr; w	Wtl	All upazilas	Ap, M	GMH 0216
* <i>Mecardonia procumbens</i> (Mill.) Small #	Micardan	Herb, pr; w	Fl, Gl, Rs	All upazilas	M	GMH 1605
* <i>Scoparia dulcis</i> L. #	Bondhone	Herb, er; w	Fl, Gl, Rs	All upazilas	M	GMH 0271
Oleaceae Hoffmanns. & Link						
<i>Jasminum multiflorum</i> (Burm.f.) Andrews	Chameli	Shrub, sc; pl	Gr, Hs	Bs, Fa, Ch, Mr	M, O	SSS 3668
<i>J. sambac</i> (L.) Aiton #	Beli, jui	Shrub; pl	Gr, Hs	Bs, Mo	M, O	SSS 3582
<i>J. scandens</i> (Retz.) Vahl	Jui	Shrub; pl	Gr, Hs	Bs, Mo	M	SSS 3587
* <i>Nyctanthes arbor-tristis</i> L.	Sheuli, shephali	Tree, s; pl	Hs, Rs	All upazilas	M, O	GMH 1598
Orobanchaceae Vent.						
* <i>Centranthera tranquebarica</i> (Spreng.) Merr.	Pashmicentra	Herb, pr; w	Gl	Sa	Fo, M	GMH 4025
Linderniaceae Borsch, Kai Müll. & Eb. Fisch.						
* <i>Bonnaya antipoda</i> (L.) Druce.	Zai ghas	Herb, pr; w	Fl, Gl, Rs	All upazilas	M	GMH 1627
* <i>B. ciliata</i> (Colsm.) Spreng.	Bhui papri	Herb, pr; w	Fl, Gl, Rs	All upazilas	M	GMH 0217
* <i>Lindernia procumbens</i> (Krock.) Borbás	Bakpuspa	Herb, pr; w	Fl, Gl, Rs	All upazilas	M	GMH 0218
* <i>L. rotundifolia</i> (L.) Alston	Tan chapra	Herb, pr; w	Fl, Rs, Wtl	Bs, Fa, Ra, Sa	Ap, M	GMH 1660
* <i>Torenia anagallis</i> (Burm.fil.) Wannan, W.R.Barker & Y.S.Liang	Panighas	Herb, pr; w	Fl, Gl, Rs	All upazilas	M	GMH 1652
* <i>T. crustacea</i> (L.) Cham. & Schldl.	Chapraghas	Herb, pr; w	Fl, Gl, Ml	Sa	M	GMH 1708
<i>T. diffusa</i> D. Don	Ushatoren	Herb, pr; w	Fl, Rs	Bs, Mo, Ra	O	GMH 1683
* <i>Yamazakia pusilla</i> (Willd.) W.R.Barker, Y.S.Liang & Wannan	Pusichapra	Herb, pr; w	Fl, Gl, Ml	Sa	M	GMH 1709
Acanthaceae Juss.						
* <i>Acanthus ilicifolius</i> L.	Hargoza	Shrub; w	Fm, Rb	Ka, Mo, Mr, Ra, Sa	M	GMH 0001
* <i>A. volubilis</i> Wall.	Lata hargoza	Herb, cl; w	Fm, Rb	Mo	M	GMH 0002
<i>Andrographis paniculata</i> (Burm.f.) Nees	Kalomegh	Herb, er; w	Wl	Bs, Fa, Ml	M	GMH 1735
<i>Asystasia gangetica</i> (L.) T. Anderson	Gangatara	Herb, er; w	Fl, Rs	Mo	M	GMH 1623
* <i>Avicennia marina</i> (Forssk.) Vierh.	Moricha baen	Tree, m; w	Wl	Mo, Sa	M, T	GMH 0009

Scientific name	Bangla name	Habit	Habitat	Distribution	Use	RSE
* <i>A. officinalis</i> L.	Shada baen	Tree, l; w	Wl	Mo, Sa	M, T	GMH 0010
<i>Barleria cristata</i> L.	Janti	Herb, er; pl	Gr, Hs	Ch, Mo	M, O	GMH 1634
<i>B. prionitis</i> L.	Kantajanti	Shrub; pl	Gr	Mo	M	GMH 1717
<i>Ecbolium ligustrinum</i> (Vahl) Vollesen	Shial leza	Herb, er; w	Fl, Wl	All upazilas	M	GMH 1688
* <i>Hemigraphis hirta</i> (Vahl) T. Anderson	Buripana	Herb, pr; w	Fl, Gl, Rs	All upazilas	M	GMH 1719
<i>Hygrophila auriculata</i> (Schumach.) Heine	Kulekhara	Herb, er; w	Fl	All upazilas	M	GMH 0197
<i>H. difformis</i> (L.f.) Blume	Bagua	Herb, fr; w	Wtl	Ch, Fa, Mo, Ra	M	SSS 3583
* <i>H. erecta</i> (Burm.f.) Hochr	Filareck	Herb, er; w	Wtl	Fa, Mo, Ml, Ra	M	SSS 3586
<i>H. phlomoides</i> Nees	Gokul kanta	Herb, er; w	Fl	Ch, Fa	M	SSS 3611
* <i>H. polysperma</i> (Roxb.) T. Anderson	Alai kalai	Herb, pr; w	Fl, Wtl	All upazilas	M	GMH 1721
<i>H. ringens</i> (L.) R.Br. ex Spreng. var. <i>ringens</i>	Soza kulekhara	Herb, pr; w	Fl, Wtl	Bs, Fa	M	GMH 1624
* <i>Justicia adhatoda</i> L.	Basok	Shrub; w	Ml, Rs	All upazilas	He, M	GMH 0205
* <i>J. diffusa</i> Willd.	Pitapapra	Herb, pr; w	Fl, Sj	All upazilas	M	GMH 0206
* <i>J. gendarussa</i> Burm.f.	Jagotmadan	Herb, er; w	Fl, Ml, Sj	All upazilas	He, M	SSS 3620
<i>Lepidagathis incurva</i> Buch.-Ham. ex D.Don	Karuggathis	Herb, pr; w	Fl, Rs, Sj	Bs, Fa, Ml, Ra	M	SSS 3643
* <i>Nelsonia canescens</i> (Lam.) Spreng.	Paramul	Herb, pr; w	Fl, Gl, Wl	All upazilas	M	GMH 0233
<i>Phaulopsis imbricata</i> (Forssk.) Sweet	Bhuibashak	Herb, pr; w	Sj, Wl	Bs, Fa, Ra	M	GMH 1655
<i>Pseuderanthemum maculatum</i> (G.Lodd.) I.M.Turner #	Unknown	Shrub; pl	Gr, Hs	Bs, Ml, Mo	O	GMH 1671
* <i>Rungia pectinata</i> (L.) Nees	Pindi	Herb, pr; w	Fl, Gl, Rs	All upazilas	P	GMH 0260
* <i>Ruellia prostrata</i> Poir.	Posta booti	Herb, pr; w	Fl, Sj, Wl	All upazilas	M	GMH 0243
* <i>R. tuberosa</i> L. #	Chotpotey	Herb, er; w	Fl, Wl	All upazilas	M, O	GMH 0264
<i>Thunbergia erecta</i> (Benth.) T.Anderson	Neel ghonti	Shrub; pl	Gr	Mo	O	GMH 1727
<i>T. grandiflora</i> (Roxb. ex Rottl.) Roxb.	Neel lata	Herb, cl; w	Fm, Wl	Bs, Fa	M	GMH 1632
<i>T. mysorensis</i> (Wight) T.Anderson #	Bashar lata	Herb, cl; pl	Gr	Bs, Mo,	O	SSS 3667
Pedaliaceae R.Br.						
<i>Sesamum indicum</i> L.	Til	Herb, er; cv	Af, Rs	Ch, Fa, Ml, Mr	M, Oy	GMH 1732
Bignoniaceae Juss.						
* <i>Dolichandrone spathacea</i> (L.f.) Seem.	Gorshinga	Tree, m; w	Ml	Mo, Sa	M, T	GMH 0033
<i>Oroxylum indicum</i> (L.) Kurz	Bhutum	Tree, m; w	Sj, Wl	Bs, Fa, Ka, Ml	Dy, M	GMH 1649
* <i>Pajanelia longifolia</i> (Willd.) K.Schum.	Pajanelia	Tree, m; w	Fm, Wl	Sa	M	GMH 0053
<i>Tecoma stans</i> (L.) Juss. ex Kunth #	Tecoma	Tree, s; pl	Rs	Bs, Mo	O	GMH 1731
Lentibulariaceae Rich.						
* <i>Utricularia aurea</i> Lour.	Patajhajhi	Herb, sm; w	Wtl	Bs	M	GMH 1639
Sphenocleaceae T. Baskerv.						
* <i>Sphenoclea zeylanica</i> Gaertn.	Jhil morich	Herb, er; w	Wtl	Sa, Mo	M	MSR 1312
Rubiaceae Juss.						
<i>Coffea benghalensis</i> B.Heyne ex Schult.	Bangla coffee	Shrub; w	Sj	Bs, Fa	M, O	SSS 3612
* <i>Dentella repens</i> (L.) J.R.Forst. & G.Forst.	Bhuipat	Herb, pr; w	Af, Fl, Gl	All upazilas	M	SSS 3628
* <i>D. repens</i> var. <i>serpyllifolia</i> (Wall. ex Craib) Verdc.	Bhuipat	Herb, pr; w	Af, Fl, Ml	Sa	M	SSS 3649
* <i>Gardenia jasminoides</i> J.Ellis	Gondhoraj	Shrub; pl	Gr, Hs	Bs, Mo	M, O	SSS 3621
* <i>Hypobathrum racemosum</i> (Roxb.) Kurz	Peetunga	Tree, s; w	Fm, Wl	Bs, Fa, Mo, Sa	M	GMH 0041
* <i>Ixora coccinea</i> L.	Rangon	Shrub; pl	Gr, Rs	All upazilas	O	GMH 1667
<i>I. cuneifolia</i> Roxb.	Jangli rangon	Shrub; w	Sj, Wl	Bs, Fa, Ra	M, O	GMH 1641

Scientific name	Bangla name	Habit	Habitat	Distribution	Use	RSE
* <i>I. pavetta</i> Andr.	Banrangon	Shrub; w	Sj, Wl	All upazilas	M, O	GMH 0204
* <i>Leptopetalum biflorum</i> (L.) Neupane & N.Wikstr.	Bhui papra	Herb, pr; w	Fl, Gl	Mo, Mr, Ra, Sa	M	GMH 1659
<i>Meyna spinosa</i> Roxb. ex Link	Katai	Shrub; w	Sj, Wl	Bs, Fa, Ml, Sa	M	GMH 1654
* <i>Morinda citrifolia</i> L.	Noni	Shrub; w	Rb, Wl	All upazilas	M	GMH 0230
<i>Mussaenda erythrophylla</i> Schumach. & Thonn. #	Lal mussenda	Shrub; pl	Hs	Bs, Mo	O	SSS 3635
<i>M. philippica</i> A.Rich. #	Mussenda	Shrub; pl	Hs	All upazilas	O	SSS 3614
* <i>Neolamarckia cadamba</i> (Roxb.) Bosser	Kadom	Tree, l; w	Rs, Wl	All upazilas	M, T	GMH 0100
* <i>Oldenlandia corymbosa</i> L.	Khet papra	Herb, pr; w	Af, Fl, Gl	All upazilas	Dy, M	GMH 0236
<i>O. diffusa</i> (Willd.) Roxb.	Fussa papra	Herb, pr; w	Af, Fl, Gl	All upazilas	M	GMH 1646
<i>Pavetta indica</i> L.	Shadarangon	Shrub; w	Sj, Wl	Fa	Co, M	GMH 1642
<i>Paederia foetida</i> L.	Gandhabaduli	Herb, cl; pl	Hs, Sj	Bs, Fa, Mo	M	SSS 3664
* <i>Scleromitron diffusum</i> (Willd.) R.J.Wang	Panki	Herb, pr; w	Fl, Ml, Rs	All upazilas	M	GMH 1661
<i>S. verticillatum</i> (L.) R.J.Wang	Notapapra	Herb, pr; w	Af, Fl, Gl	All upazilas	M	GMH 1668
* <i>Spermacoce articularis</i> L.f.	Baghajangla	Herb, pr; w	Fl, Ml, Wl	All upazilas	M	GMH 0283
* <i>S. exilis</i> (L.O.Williams) C.D.Adams ex W.C.Burger & C.M.Taylor	Baghajangla	Herb, pr; w	Fl, Ml, Wl	Bs, Fa, Ml, Mo	M	GMH 1656
Asteraceae Bercht. & J. Presl						
* <i>Acilepis divergens</i> (DC.) H.Rob. & Skvarla #	Bichutivernon	Herb, er; w	Fl, Gl, Rs	Sa	M	SSS 3640
* <i>Acmella calva</i> (DC.) R.K. Jansen.	Surjakonnya	Herb, pr; w	Fl, Gl, Rs	All upazilas	M	GMH 0088
* <i>Ageratum conyzoides</i> L. #	Fulkuri	Herb, er; w	Fl, Ml, Wl	All upazilas	M	GMH 0090
* <i>Blumea lacera</i> (Burm.f.) DC.	Shialmutra	Herb, er; w	Fl, Gl, Rs	All upazilas	M	GMH 0111
<i>B. lanceolaria</i> (Roxb.) Druce	Barotara	Herb, er; w	Fl, Rs	Bs	M	SAK 3205
* <i>B. oxyodonta</i> DC.	Katapata	Herb, er; w	Fl, Ml	Sa	M	GMH 4024
<i>Calendula officinalis</i> L. #	Calendula	Herb, er; pl	Gr	Bs	O	SAK 3209
<i>Centratherum punctatum</i> Cass. #	Unknown	Herb, er; w	Fl, Rs	Fa, Ra	M, O	SAK 3245
* <i>Chromolaena odorata</i> (L.) R.M.King & H.Rob. #	Assam lata	Herb, er; w	Fl, Fm, Wl	All upazilas	M	GMH 0130
<i>Chrysanthemum indicum</i> L.	Chandramallika	Herb, er; pl	Gr, Hs	Bs, Fa, Mo, Ml	O	SAK 3220
<i>Cirsium arvense</i> (L.) Scop	Shial kata	Herb, er; w	Fl, Rs	Bs, Ch, Fa, Mo, M Ra	M	SAK 3232
<i>Conyza semipinnatifida</i> Wall. ex DC.	Coniza	Herb, er; w	Fl, Rs	Ch, Fa, Mo, Ra, M Sa	M	SAK 3201
<i>Cosmos bipinnatus</i> Cav. #	Cosmos	Herb, er; pl	Hs, Rs	All upazilas	O	SAK 3211
* <i>Cyanthillium cinereum</i> (L.) H.Rob.	Kukshim	Herb, er; w	Fl, Gl, Rs	All upazilas	M	GMH 0299
* <i>C. patulum</i> (Aiton) H.Rob. #	Kukshim	Herb, er; w	Fl, Gl, Rs	Sa	M	SSS 3613
<i>Dahlia imperialis</i> Roetzl ex Orgies #	Dalia	Herb, er; pl	Hs, Rs	All upazilas	O	SAK 3228
* <i>Eclipta prostrata</i> (L.) L. #	Kalokeshi	Herb, pr; w	Fl, Gl, Rs	All upazilas	Dy, M	GMH 0168
* <i>Elephantopus scaber</i> L.	Hastipadi	Herb, er; w	Gl, Rs, Wl	Bs, Fa, Ml, Mo	M	GMH 0171
* <i>Emilia sonchifolia</i> (L.) DC. #	Mechitra	Herb, er; w	Fl, Gl, Rs	All upazilas	M	GMH 0173
* <i>Enydra fluctuans</i> Lour.	Helencha	Herb, pr; w	Wtl	All upazilas	M, Vg	GMH 0174
<i>Glebionis coronaria</i> (L.) Cass. ex Spach #	Chandramallika	Herb, er; pl	Hs, Rs	Bs, Mo	O	SAK 3207
* <i>Gnaphalium polycaulon</i> Pers.	Bara kamra	Herb, er; w	Fl, Gl	All upazilas	M	SAK 3224
* <i>Grangea maderaspatana</i> (L.) Poir.	Namuti	Herb, er; w	Af, Fl, Ml	All upazilas	M	GMH 0190
<i>Helianthus annuus</i> L. #	Surjomukhi	Herb, er; pl	Af, Hs	Bs, Mo	O, Oy	SAK 3222

Scientific name	Bangla name	Habit	Habitat	Distribution	Use	RSE
<i>Hemisteptia lyrata</i> (Bunge) Fisch. & C.A.Mey.	Unknown	Herb, er; w	Af	MI	Fo	SAK 3200
* <i>Launaea aspleniifolia</i> (Willd.) Hook.f.	Tik chana	Herb, er; w	Fl, Rs	All upazilas	M	GMH 1653
* <i>L. sarmentosa</i> (Willd.) Sch.Bip. ex Kuntze	Menthosdana	Herb, pr; w	Fl, Gl	Ch, Sa	M	GMH 0210
* <i>Mikania cordata</i> (Burm.f.) B.L.Rob.	Assam lata	Herb, cl; w	Sj, Fm, Wl	All upazilas	M	GMH 0226
<i>Parthenium hysterophorus</i> L. #	Parthenum	Herb, er; w	Fl, Rs	All upazilas	M	GMH 1729
<i>Pluchea indica</i> (L.) Less.	Kokronta	Shrub; w	Fl, Rs	Sa	M	SAK 32
<i>P. paniculata</i> (Willd.) Karthik. & Moorthy	Kukurshinga	Herb, er; w	Fl, Gl, Rs	All upazilas	M	SAK 3216
* <i>Pseudognaphalium luteoalbum</i> (L.) Hilliard & B.L. Burt	Barakamra	Herb, er; w	Fl, Gl, Rs	All upazilas	M	GMH 0189
<i>Sonchus arvensis</i> L. #	Chashar	Herb, er; w	Fl, Gl, Rs	Fa, Mo, Ra, Sa	M	SAK 3240
* <i>S. oleraceus</i> L. #	Titlia	Herb, er; w	MI, Rs	Sa	M	SAK 3216
* <i>S. wightianus</i> DC.	Bon palang	Herb, er; w	Fl, MI, Rs	Mo, Sa	M	SAK 3231
* <i>Sphaeranthus africanus</i> L.	Gangasag	Herb, pr; w	Af, Fl, Rs	Sa	M	SAK 3219
* <i>S. indicus</i> L.	Mundi	Herb, pr; w	Af, Fl, Rs	All upazilas	M	GMH 0282
* <i>Sphagneticola trilobata</i> (L.) Pruski #	Latadeji	Herb, pr; w	Fl, Rs	All upazilas	Gm, O	GMH 1728
* <i>Synedrella nodiflora</i> (L.) Gaertn. #	Nakphul	Herb, er; w	Fl, Gl, Rs	All upazilas	M	GMH 0287
* <i>Tagetes erecta</i> L. #	Gada, ganda	Herb, er; pl	Hs, Rs	All upazilas	M, O	SSS 3630
<i>Tarlmounia elliptica</i> (DC.) H.Rob., S.C.Keeley, Skvarla & R.Chan #	Akorkata	Herb, cl; pl	Gr	Bs, Ka, Mr	He	SSS 3670
* <i>Tridax procumbens</i> (L.) L. #	Tridhara	Herb, er; w	Fl, Gl, Rs	All upazilas	M	GMH 0294
* <i>Wollastonia biflora</i> (L.) Dc.	Wedelia	Herb, pr; w	Fm, MI	Sa	Fo	GMH 0080
* <i>Xanthium strumarium</i> L. #	Ghagra	Herb, er; w	Af, Fl, MI	All upazilas	M, Vg	GMH 0302
<i>Youngia japonica</i> (L.) DC.	Youngaful	Herb, er; w	Fl, Gl	Bs	M	GMH 1693
<i>Zinnia peruviana</i> (L.) L. #	Zinia	Herb, er; pl	Gr	Bs	O	SSS 3615
LILIOPSIDA Batsch						
Alismataceae Vent.						
* <i>Sagittaria sagittifolia</i> L. #	Chotokut	Herb, er; w	Af, Wtl	Ch, Ka, Mr, Ra	O, Lf	GMH 0267
Hydrocharitaceae Juss.						
* <i>Hydrilla verticillata</i> (L. f.) Royle	Kureli	Herb, sm; w	Wtl	Bs, Fs, MI, Sa	Ap, M	GMH 1665
<i>Najas indica</i> (Willd.) Cham.	Deshi jhaji	Herb, sm; w	Wtl	Bs, Fa, Sa	Ap, Gm	GMH 1689
* <i>N. minor</i> All.	Bara jhaji	Herb, sm; w	Wtl	Bs, Fa, Sa	Ff, Gm	GMH 1672
* <i>Ottelia alismoides</i> (L.) Pers.	Pani kala	Herb, sm; w	Wtl	All upazilas	M, Vg	GMH 1696
* <i>Vallisneria spiralis</i> L.	Patseola	Herb, sm; w	Wtl	Bs, Fs, MI, Sa	Ap, M	GMH 1645
Aponogetonaceae Planch.						
* <i>Aponogeton appendiculatus</i> H.Bruggen	Ghechu	Herb, sm; w	Wtl	Bs, Ch, Fa, Sa	Ap, M	GMH 0102
Potamogetonaceae Bercht. & J. Presl						
* <i>Potamogeton crispus</i> L.	Pata zhanchi	Herb, sm; w	Wtl	Bs, Fa, Ka, Sa	M, Wp	GMH 1648
<i>P. nodosus</i> Poir.	Lombu zhanchi	Herb, fr; w	Wtl	Bs, Fa, MI	M, Wp	GMH 1695
Iridaceae Bercht. & J. Presl						
<i>Iris domestica</i> (L.) Goldblatt & Mabb.	Basbichandi	Herb, er; pl	Gr	Bs	O	GMH 1684
Arecaceae Bercht. & J. Presl						
* <i>Areca catechu</i> L. #	Supari	Palm; pl	Hs, Rs	All upazilas	Dy, M	GMH 1691
* <i>Borassus flabellifer</i> L.	Tal	Palm; pl	Hs, Rs	All upazilas	Fb, M	GMH 0114
<i>Calamus guruba</i> Buch.-Ham. ex Mart.	Jali bet	Palm; pl	MI, Rb, Sj	Ch, Fa	Hc	GMH 0117
<i>C. longisetus</i> Griff.	Karak bet	Palm; pl	MI	Fa	Hc	GMH 1694

Scientific name	Bangla name	Habit	Habitat	Distribution	Use	RSE
* <i>C. tenuis</i> Roxb.	Unknown	Palm; pl	MI	All upazilas	Hc, M	GMH 0116
<i>Caryota urens</i> L. #	Fishtail palm	Palm; pl	MI, Rs	Bs, Ch, Fa, MI	M, O	SSS 3622
* <i>Chamaedorea elegans</i> Mart. #	Areca palm	Palm; pl	Hs, MI, Rs	All upazilas	Fb, O	SSS 3637
* <i>Cocos nucifera</i> L. #	Narikel	Palm; pl	Hs, MI, Rs	All upazilas	Fb, Fr	GMH 0138
<i>Elaeis guineensis</i> Jacq. #	Oil palm	Palm; pl	Hs, MI	Bs, Fa, Mo, Ra	M, Oy	SSS 3623
<i>Livistona chinensis</i> (Jacq.) R.Br. ex Mart. #	China tokopata	Palm; pl	MI, Rs	Bs, Fa, Mo	Fb, Hc	SSS 3646
* <i>Nypa fruticans</i> Wurm	Golpata	Palm; w	Rb, Fm	Mo, Mr, Ra, Sa	M, Tm	GMH 0052
* <i>Phoenix paludosa</i> Roxb.	Hental	Palm; w	Fm, Wl	Mo, Sa	Fr, Hc	GMH 0057
* <i>P. sylvestris</i> (L.) Roxb.	Deshi khejur	Palm; w	MI, Rs	All upazilas	Ju, M	GMH 0246
<i>Rhapis excelsa</i> (Thunb.) A.Henry #	Gurital	Palm; pl	Hs	Bs	O	GMH 1685
<i>Roystonea regia</i> (Kunth) O.F.Cook #	Bottol palm	Palm; pl	MI, Rs	Bs, Fa, MI, Mo	O, Tm	SSS 3648
Pandanaceae R.Br.						
* <i>Benstonea foetida</i> (Roxb.) Callm. & Buerki	Keya kanta	Shrub; w	Fl, Rb	Fa, Mo, Sa	M, O	GMH 0054
<i>Pandanus amaryllifolius</i> Roxb. ex Lindl. #	Polau pata	Herb, er; pl	Fl, Hs	Bs, Ch, MI, Ra	M, Pf	GMH 1647
Araceae Juss.						
<i>Alocasia fornicata</i> (Roxb.) Schott	Bishkachu	Herb, er; w	Fl, Wl	Bs, Ch, Fa, Ka	M	SSS 3633
* <i>A. macrorrhizos</i> (L.) G.Don #	Mankachu	Herb, er; cv	Fl, Hs	All upazilas	Vg	GMH 0092
<i>Amorphophallus paeoniifolius</i> (Dennst.) Nicolson	Olkachu	Herb, er; cv	Af, Hs	All upazilas	Vg	GMH 1686
<i>Caladium bicolor</i> (Aiton) Vent. #	Diranga kachu	Herb, er; pl	Hs	Bs	O	SSS 3616
* <i>Colocasia esculenta</i> (L.) Schott	Kachu	Herb, er; w	Af, Fl, Wtl	All upazilas	Vg	GMH 0139
* <i>Cryptocoryne ciliata</i> (Roxb.) Schott	Kerali	Herb, er; w	Fl, Rb, Wtl	Ch, Ka, Mo, Mr, Sa	M, Sb	GMH 1674
<i>Dieffenbachia seguine</i> (Jacq.) Schott #	Dieffenbachia	Herb, er; pl	Gr, Hs	All upazilas	O	SSS 3667
* <i>Epipremnum aureum</i> (Linden & André) G.S.Bunting #	Money plant	Herb, cl; w	Hs, Wl	All upazilas	O	GMH 1813
* <i>Lasia spinosa</i> (L.) Thwaites	Katakachu	Herb, er; w	Fl, Hs, Wtl	Bs, Fa, Sa	M, Vg	SSS 3617
* <i>Lemna minor</i> L.	Sujipana	Herb, ff; w	Wtl	All upazilas	Ff, Wp	SSS 3639
* <i>L. perpusilla</i> Torr. #	Khudipana	Herb, ff; w	Wtl	All upazilas	Ff, Wp	SSS 3647
<i>Monstera deliciosa</i> Liebm. #	Bishal patri	Herb, cl; pl	Gr, Hs	Bs, Mo	O	SSS 3665
* <i>Pistia stratiotes</i> L.	Topapana	Herb, ff; w	Wtl	All upazilas	M	GMH 1826
<i>Syngonium podophyllum</i> Schott #	Podolata kachu	Herb, pr; w	Fl, Hs, Sj	Bs, Ch, Fa, Mo, Ra, Sa	O	SSS 3650
* <i>Typhonium flagelliforme</i> (G. Lodd.) Blume	Ghechu	Herb, er; w	Af, Fl, Rs	All upazilas	M	GMH 1803
* <i>T. trilobatum</i> (L.) Schott	Ghetkachu	Herb, er; w	Fl, Rs	All upazilas	M, Vg	GMH 0296
<i>Xanthosoma sagittifolium</i> (L.) Schott #	Dudhkachu	Herb, er; w	MI, Hs	Bs, Ch, Fa, Ka	M, Vg	SSS 3644
Commelinaceae Mirb.						
* <i>Commelina benghalensis</i> L.	Kanshira	Herb, cr; w	Af, Fl, Rs	All upazilas	Dy, M	GMH 0140
* <i>C. diffusa</i> Burm.f.	Kanshira	Herb, cr; w	Af, Fl, Rs	All upazilas	Dy, M	GMH 1810
<i>C. erecta</i> L. #	Jata kanshira	Herb, er; w	Fl, Gl, Rs	All upazilas	M	GMH 1802
* <i>C. longifolia</i> Lam.	Pani kanshira	Herb, cr; w	Fl, Gl, Rs	All upazilas	M	GMH 1829
<i>Cyanotis axillaris</i> (L.) D.Don ex Sweet	Baghanulla	Herb, pr; w	Af, Fl, Gl	Ch, Fa, MI	M	GMH 1806
* <i>Murdannia blumei</i> (Hassk.) Brenan	Nil murdan	Herb, pr; w	Fl, Gl, MI	Fa, Ka, Mo, Mr, Sa	M	GMH 1828
* <i>M. loriformis</i> (Hassk.) R.S. Rao & Kammathy	Lori murdan	Herb, pr; w	Fl, Gl, MI	Fa, MI, Mr, Sa	M	GMH 1820

Scientific name	Bangla name	Habit	Habitat	Distribution	Use	RSE
* <i>M. nudiflora</i> (L.) Brenan	Kureli	Herb, cr; w	Fl, MI	All upazilas	M	GMH 0232
* <i>M. vaginata</i> (L.) G. Brückn.	Dhaka murdan	Herb, pr; w	Fl, Rs	Mo, Sa	M	GMH 1801
<i>Tradescantia pallida</i> (Rose) D.R. Hunt #	Beguni pindo	Herb, pr; pl	Gr, Hs	Bs, Mo	M, O	SSS 3618
<i>T. spathacea</i> Sw. #	Chama pindo	Herb, er; pl	Gr, Hs	Bs, Mo	M, O	SSS 3636
<i>T. zebrina</i> Bosse #	Unknown	Herb, pr; pl	Gr, Hs	Bs, Mo	O	SSS 3625
Flagellariaceae Dumort.						
* <i>Flagellaria indica</i> L.	Abeti	Herb, cl; w	Ka, Mo, Mr, Ka, Mo, Mr, Sa Sa	Fb, Tm		GMH 0038
Cyperaceae Juss.						
* <i>Bulbostylis barbata</i> (Rottb.) C.B. Clarke	Bulbobata	Herb, er; w	Gl	All upazilas	Lf, Sb	GMH 1807
* <i>Cyperus altermifolius</i> L. #	Joraghasi	Herb, er; w	Fl, MI	Mo, Sa	O	GMH 1825
* <i>C. altermifolius</i> subsp. <i>flabelliformis</i> Kük. #	Sata ghasi	Herb, er; w	Fl, MI	Mo, Sa	O, Tm	GMH 1823
* <i>C. articulatus</i> L.	Joraghasi	Herb, er; w	Wtl	All upazilas	Fo	GMH 1815
* <i>C. brevifolius</i> (Rottb.) Hassk.	Shabujnirbisa	Herb, er; w	Af, Fl, Gl	All upazilas	Lf, M	GMH 0207
* <i>C. compressus</i> L.	Chancha	Herb, er; w	Af, Fl, Gl	All upazilas	M	GMH 1827
* <i>C. cuspidatus</i> Kunth	Sagarmuthi	Herb, er; w	Fl, Gl, Rs	All upazilas	M	GMH 1830
<i>C. cyperoides</i> (L.) Kuntze	Bara guthubi	Herb, er; w	Fl, Rs, Wtl	Bs, Fa	M	GMH 4067
* <i>C. difformis</i> L.	Behua ghasi	Herb, er; w	Af, Fl	All upazilas	M	GMH 4032
* <i>C. digitatus</i> Roxb.	Hath ghasi	Herb, er; w	Wtl	All upazilas	M	GMH 0154
* <i>C. eragrostis</i> Lam. #	Bada ghas	Herb, er; w	Fl, Gl, Rs	All upazilas	Lf, Sb	GMH 0175
* <i>C. exaltatus</i> Retz.	Tata ghasi	Herb, er; w	Gl, Wtl	All upazilas	M, Tm	GMH 1812
* <i>C. iria</i> L.	Bara chucha	Herb, er; w	Fl, Gl, Rs	All upazilas	M, Lf	GMH 1805
* <i>C. javanicus</i> Hoult.	Java ghasi	Herb, er; w	Gl, MI	Mo, Mr, Sa	Sb, Tm	GMH 1802
* <i>C. malaccensis</i> Lam.	Shumati pati	Herb, er; w	Wtl	Ka, Mo, Mr, Ra, Sa	Hc, M	GMH 0025
* <i>C. mindorensis</i> (Steud.) Huygh	Subashi nirbisa	Herb, er; w	Af, Fl, Gl	All upazilas	Lf, M	GMH 0208
<i>C. pangorei</i> Rottb.	Madur kathi	Herb, er; w	Fl, Wtl	Bs, Fa, Mo	Hc, Lf	GMH 1817
* <i>C. polystachyos</i> Rottb.	Pikppli ghas	Herb, er; w	Gl, Wtl	All upazilas	Lf, Sb	GMH 1822
<i>C. richardii</i> Steud.	Gola nirbisa	Herb, er; w	Af, Fl, Gl	Fa, MI, Ra, Sa	Lf, M	GMH 1816
* <i>C. rotundus</i> L.	Nagarmutha	Herb, er; w	Fl, Gl, Rs	All upazilas	Hc, M	GMH 0155
<i>C. sanguinolentus</i> Vahl	Paikram ghasi	Herb, er; w	Gl, Wtl	Ch, MI, Ra	Sb	GMH 1814
* <i>C. tenuiculmis</i> Boeckeler	Tonimutha	Herb, er; w	Wtl	All upazilas	Lf	MSR 0043
* <i>C. unioloides</i> R.Br.	Paikol ghas	Herb, er; w	Fl, Gl, MI	Fa, Mo, MI, Sa	Lf, Sb	GMH 0258
<i>Eleocharis dulcis</i> (Burm.f.) Trin. ex Hensch.	Mishti ghasi	Herb, er; w	Fl, MI	Ch, MI, Ra	M, Vg	MSR 1503
* <i>E. geniculata</i> (L.) Roem. & Schult.	Jora ghasi	Herb, er; w	Gl	All upazilas	Fo	MSR 0183
* <i>E. spiralis</i> (Rottb.) Roem. & Schult.	Ghurni ghasi	Herb, er; w	Wtl	Ka, Mr, Ra, Sa	Fo	GMH 0170
* <i>Fimbristylis acuminata</i> Vahl	Chosa fimbry	Herb, er; w	Gl	All upazilas	Sb, Fo	GMH 1811
* <i>F. autumnalis</i> (L.) Roem. & Schult. #	Fimbry	Herb, er; w	Gl	Mo, Ra, Sa	Sb, Fo	GMH 1804
<i>F. bisumbellata</i> (Forssk.) Bubani	Dula fimbry	Herb, er; w	Gl	Bs, Ch, Fa, MI	Sb	GMH 1818
* <i>F. cymosa</i> R.Br.	Mosa fimbry	Herb, er; w	Gl	Mo, Mr, Ra, Sa	Sb	MSR 0622
* <i>F. dichotoma</i> (L.) Vahl	Bara nirbishi	Herb, er; w	MI, Wtl	All upazilas	Gm, Sb	GMH 0184
* <i>F. disticha</i> Boeckeler	Tika fimbry	Herb, er; w	Gl	Mo, Mr, Ra, Sa	Fo, Sb	GMH 4031
* <i>F. ferruginea</i> (L.) Vahl	Gini fimbry	Herb, er; w	Gl, Wtl	Mo, Mr, Ra, Sa	Sb, Tm	GMH 1808
* <i>F. littoralis</i> Gaudich.	Litto fimbry	Herb, er; w	Gl, Wtl	Sa	Sb	Rahman <i>et al.</i> 2015
* <i>F. ovata</i> (Burm. f.) J. Kern	Marmari	Herb, er; w	Gl, Wtl	Ch, Mo, Ra, Sa	Sb, Fo	MSR 0168

Scientific name	Bangla name	Habit	Habitat	Distribution	Use	RSE
<i>F. quinqueangularis</i> (Vahl) Kunth	Pachkona fimbry	Herb, er; w	Gl	Fa, Mr, Ra, Sa	Sb, Fo	GMH 4016
* <i>F. squarrosa</i> Vahl	Zumka chech	Herb, er; w	Gl	Mo, Mr, Ra, Sa	Sb	MSR 0194
* <i>F. tetragona</i> R.Br.	Tetra fimbry	Herb, er; w	Gl, Wtl	Mo, Ra, Sa	Sb, Fo	GMH 1809
* <i>F. tristachya</i> R.Br.	Trista fimbry	Herb, er; w	Gl	Sa	Sb	MSR 0650
* <i>Fuirena ciliaris</i> (L.) Roxb.	Poshmighas	Herb, er; w	Fl, Gl, Wtl	Mo, Mr, Ra, Sa	Lf	GMH 0187
* <i>F. umbellata</i> Rottb.	Chati ghasi	Herb, er; w	Gl, Wtl	Ra, Sa	Fo	GMH 1824
* <i>Schoenoplectiella articulata</i> (L.) Lye	Chechra	Herb, er; w	Af, Fl, Wtl	All upazilas	Lf, M	GMH 0270
* <i>S. lateriflora</i> (J.F.Gmel.) Lye	Supipotpoti	Herb, er; w	Fl, Wtl	Ch, Mo, Sa	Fo, Tm	MSR 1305
* <i>Scleria biflora</i> Roxb.	Riaflora ghasi	Herb, er; w	Gl	Sa	Fo	Rahman et al. 2015
Poaceae Barnhart						
* <i>Arundo donax</i> L.	Bara nal	Herb, er; w	MI, Rb	Sa	Sb, Tm	GMH 0105
* <i>Axonopus compressus</i> (Sw.) P.Beauv.	Karpetghas	Herb, er; w	Fl, Gl, Rs	All upazilas	Lf, Sb	GMH 0107
* <i>Bambusa balcooa</i> Roxb.	Borak bans	Bamboo; w	Wl	All upazilas	Hc, Vg	SSS 3619
<i>B. nutans</i> Wall. ex Munro	Mahal Bans	Bamboo; w	Wl	Bs, Ch, Fa, Ra	Pp, Tm	SSS 3631
* <i>B. tulda</i> Roxb.	Mirtinga	Bamboo; w	Hs, Wl	All upazilas	Hc, Pp	SSS 3642
* <i>Bothriochloa bladonii</i> (Retz.) S.T. Blake	Gandhagourni	Herb, pr; w	Gl	Sa	Lf, Sb	Rahman et al. 2015
* <i>Brachiaria distachya</i> (L.) Stapf	Cori ghas	Herb, cr; w	Gl, Rs	Bs, Fa, Mo	Lf, Sb	GMH 1819
* <i>B. ramosa</i> (L.) Stapf	Jhopa ghas	Herb, pr; w	Gl	Sa	Fo	GMH 1821
<i>Cenchrus purpureus</i> (Schumach.) Morrone #	Nepir ghas	Herb, er; cv	Af, Rs	Bs, Fa, Mo, Mr, Fo	Ra	GMH 1858
* <i>Chloris barbata</i> Sw.	Bata ghas	Herb, er; w	Af, Fl, Rs	Fa, MI, Mo, Ra	Fo	GMH 1840
* <i>C. virgata</i> Sw. #	Anguli ghas	Herb, er; w	Af, Fl, Rs	Ch, Mo, Ra	Fo	GMH 1851
* <i>Chrysopogon aciculatus</i> (Retz.) Trin.	Prem kanta	Herb, er; w	Gl, Rs	All upazilas	Hc, Sb	GMH 0132
* <i>C. zizanioides</i> (L.) Roberty #	Bena	Herb, er; w	Fl, MI	All upazilas	M, Sb	GMH 0300
<i>Coix lacryma-jobi</i> L.	Tasbi	Herb, er; w	Fl, Wtl	Ch, Ka, MI	Hc, M	GMH 1855
* <i>Cymbopogon citratus</i> (DC.) Stapf	Lenom ghas	Herb, er; cv	Gr, Hs	Bs, Mo, Sa	M, Sp	GMH 0152
* <i>Cynodon dactylon</i> (L.) Pers.	Durba ghas	Herb, pr; w	Af, Fl, Gl	All upazilas	M, Sb	GMH 0023
* <i>Cyrtococcum accrescens</i> (Trin.) Stapf	Shonpatacocca	Herb, er; w	Gl, Rs, Wl	All upazilas	Lf	SSS 3641
* <i>Dactyloctenium aegyptium</i> (L.) Willd.	Kakpaya	Herb, er; w	Fl, Gl, Rs	All upazilas	Lf, Sb	GMH 0156
<i>Dendrocalamus giganteus</i> Munro #	Budum bans	Bamboo; pl	Gr, Hs	Bs	O, Tm	SSS 3627
* <i>Digitaria ciliaris</i> (Retz.) Koeler	Kokjachira	Herb, pr; w	Fl, Gl, Rs	All upazilas	Gm, Sb	GMH 0161
<i>D. longiflora</i> (Retz.) Pers.	Kanka juriya	Herb, pr; w	Af, Fl, Gl, Rs	Ch, Fa, MI, Ra	Lf, Sb	GMH 1831
* <i>Diplacrum caricinum</i> R.Br.	Plukram ghas	Herb, pr; w	Gl	Sa	Fo	Rahman et al. 2015
* <i>Echinochloa colona</i> (L.) Link.	Shama ghas	Herb, er; w	Af, Fl, Gl	All upazilas	Lf, Sb	GMH 1856
* <i>E. crus-galli</i> (L.) P.Beauv.	Barashamaghas	Herb, er; w	Af, Fl, Gl	All upazilas	Lf, M	GMH 0167
* <i>E. stagnina</i> (Retz.) P.Beauv.	Parua ghas	Herb, er; w	Wtl	Mo, Ra, Sa	Fo	GMH 1841
* <i>Eleusine indica</i> (L.) Gaertn.	Malankuri	Herb, er; w	Af, Fl, Gl	All upazilas	M, Sb	GMH 0172
<i>Eragrostis amabilis</i> (L.) Wight & Arn.	Koni ghas	Herb, er; w	Af, Fl, Gl	Bs, Ch, Fa, Mo	O, Sb	GMH 1847
* <i>E. gangetica</i> (Roxb.) Steud.	Chira koni	Herb, pr; w	Gl	Fa, Mo, Mr, Ra, Sa	Fo, Sb	Rahman et al. 2015
* <i>E. tenella</i> (L.) P.Beauv. ex Roem. & Schult	Koni ghas	Herb, pr; w	Gl	Sa	Fo, Sb	Rahman et al. 2015
<i>E. tremula</i> Hochst. ex Steud.	Chiranula	Herb, pr; w	Fl, Gl, Rs	Ch, Mo, MI, Ra	Lf, Tm	GMH 1853

Scientific name	Bangla name	Habit	Habitat	Distribution	Use	RSE
* <i>E. unioloides</i> (Retz.) Nees ex Steud.	Chira ghas	Herb, pr; w	Gl	All upazilas	Fo, Sb	<i>Rahman et al. 2015</i>
<i>Eriochloa barbatus</i> (Trin.) S.Yadav & M.R.Almeida #	Mota nol	Herb, pr; w	Gl	Mo, Mr, Ra, Sa	Fo, Sb	SSS 3629
* <i>Hemarthria protensa</i> Steud.	Chaila	Herb, er; w	Gl, MI, Wtl	Fa, MI, Mo, Mr, Ra, Sa	Lf, Sb	SSS 3645
<i>Hygroryza aristata</i> (Retz.) Nees ex Wight & Arn.	Jongli dhan	Herb, er; w	Wtl	Ch, Fa, MI	Lf, M	SSS 3624
<i>Isachne globosa</i> (Thunb.) Kuntze	Isacdana	Herb, er; w	Gl, Fl	Fa, Ch, Mo, Sa	Lf, Sb	SSS 3626
* <i>Imperata cylindrica</i> (L.) Raeusch. #	Chhan	Herb, er; w	Gr, MI, Rs	All upazilas	Sb, Tm	GMH 0201
* <i>Leersia hexandra</i> Sw.	Fulka ghas	Herb, pr; w	Wtl	All upazilas	Lf	GMH 0212
<i>Leptochloa chinensis</i> (L.) Nees	Fulka ghas	Herb, er; w	Af	Bs, Fa, MI	Lf	SSS 3634
* <i>Myriostachya wightiana</i> (Nees ex Steud.) Hook. f.	Balia ghas	Herb, er; w	Fm, WI	Mo, Mr, Ra, Sa	Lf, Tm	GMH 0051
* <i>Oplismenus burmanni</i> (Retz.) P.Beauv.	Gohur	Herb, er; w	Fl, Rs, WI	All upazilas	Lf	GMH 1839
* <i>O. compositus</i> (L.) P.Beauv.	Gohur	Herb, er; w	Fl, Rs, WI	All upazilas	Lf	GMH 1833
* <i>Oryza coarctata</i> Roxb.	Dhanshi	Herb, er; w	Rb, Wtl	Mo, Mr, Ra, Sa	Lf, Sb	GMH 0060
<i>O. sativa</i> L. #	Dhan	Herb, er; cv	Af	All upazilas	Ed, Lf	GMH 1850
* <i>Panicum brevifolium</i> L.	Bashpati ghas	Herb, er; w	Af, Gl, MI	All upazilas	Lf, Sb	GMH 1848
<i>P. luzonense</i> J.Presl	Panicombo	Herb, er; w	MI	Sa	Fo	MSR 0324
* <i>P. maximum</i> Jacq.	Gini ghas	Herb, er; w	Wtl	Sa	Fo	MSR 0115
* <i>P. paludosum</i> Roxb.	Borali	Herb, er; w	Wtl	Sa	Fo	MSR 0084
* <i>P. repens</i> L.	Dhani ghas	Herb, er; w	Af, Fl, Gl	All upazilas	Lf, Sb	GMH 0239
* <i>Paspalum conjugatum</i> P.J.Bergius #	Moishsha ghas	Herb, er; w	Gl, Hs, Rs	All upazilas	M, Sb	GMH 1854
* <i>P. distichum</i> L. #	Chhoto goicha	Herb, er; w	MI, Wtl	Mo, Mr, Ra, Sa	Lf, Sb	GMH 1859
* <i>P. scrobiculatum</i> L.	Bishmona ghas	Herb, er; w	Fl, Gl, Rs	Mo, Sa	Lf, Sb	GMH 0240
* <i>P. vaginatum</i> Sw. #	Gina ghas	Herb, pr; w	Gl, Wtl	Fa, Mr, Ra, Sa	Lf, Sb	GMH 0056
* <i>Perotis indica</i> (L.) Kuntze	Perot ghas	Herb, er; w	Gl	Sa	Fo, Sb	GMH 1860
* <i>Phragmites karka</i> (Retz.) Trin. ex Steud.	Nal khagra	Herb, er; w	Rb, Wtl	All upazilas	Hc, Sb	GMH 0058
<i>Phyllostachys aurea</i> Rivière & C. Rivière #	Sarna bans	Bamboo; pl	Gr	Bs	Hc	GMH 1834
* <i>Rottboellia cochinchinensis</i> (Lour.) Clayton	Bara swati	Herb, pr; w	Gl	Sa	Fo	GMH 1838
<i>Saccharum officinarum</i> L. #	Akh, Ikkhu	Herb, er; cv	Af, Gr, Hs	All upazilas	Sb, Tm	GMH 1844
* <i>S. spontaneum</i> L.	Kash	Herb, er; w	Fl, Fm, Rs	All upazilas	Sb, Tm	GMH 0266
<i>Sacciolepis indica</i> (L.) Chase	Siltatto ghas	Herb, er; w	MI, Wtl	Ch, MI, Ra, Sa	Lf	GMH 1845
<i>Setaria flavida</i> (Retz.) Veldkamp	Karing ghas	Herb, er; w	Fl, Gl, MI	Bs, Fa, Mo, Mr, Sa	Lf, Sb	GMH 1852
<i>S. italica</i> (L.) P.Beauv. #	Kawn	Herb, er; cv	Af, MI, Rs	Fa, Ra	Fo	GMH 1849
<i>S. viridis</i> (L.) P.Beauv.	Kawn	Herb, er; cv	Af, MI, Rs	Fa, Ra	Fo	SSS 3632
<i>Sporobolus indicus</i> (L.) R.Br. #	Smut ghas	Herb, er; w	Fl, Gl, Rs	Mo, Mr, Ra, Sa	M, Tm	GMH 0284
* <i>S. virginicus</i> (L.) Kunth	Jhola durba	Herb, pr; w	Wtl	Sa	Fo	GMH 1832
* <i>Themeda intermedia</i> (Hack.) Bor	Medimeda ghas	Herb, er; w	MI, Wtl	Sa	Fo, Tm	GMH 1857
<i>Thysanolaena latifolia</i> (Roxb. ex Hornem.) Honda	Phul jharu	Herb, er; w	Rs, Sj	Mo	Fo, Tm	GMH 1836
<i>Zea mays</i> L. #	Bhutta	Herb, er; pl	Af	Ch, MI, Mr, Ra	Ed, Lf	GMH 1835
* <i>Zoysia matrella</i> (L.) Merr.	Baissa ghas	Herb, pr; w	Fl, Gl	Sa	Lf, Sb	GMH 0307
Bromeliaceae Juss.						
<i>Ananas comosus</i> (L.) Merr. #	Anaras	Herb, er; cv	Gr, Hs	All upazilas	Fr, M	GMH 1843

Scientific name	Bangla name	Habit	Habitat	Distribution	Use	RSE
Strelitziaceae Hutch.						
<i>Ravenala madagascariensis</i> Sonn. #	Panthopadap	Tree, s; pl	Hs	Bs, Mo	O	GMH 1837
Heliconiaceae Nakai						
<i>Heliconia metallica</i> Planch. & Linden ex Hook. #	Swarga pakhi	Herb, er; pl	Gr	Bs, Mo	O	GMH 1846
<i>H. rostrata</i> Ruiz & Pav. #	Chingrinomi	Herb, er; pl	Gr	Bs, Mo	O	GMH 1842
Musaceae Juss.						
<i>Musa paradisiaca</i> L. #	Kachkola	Herb, er; w	Fl, Hs, Ml	All upazilas	Fr, Vg	SSS 3656
Typhaceae Juss.						
* <i>Typha domingensis</i> Pers.	Hogla	Herb, er; w	Wtl	Sa	Sb, Tm	GMH 0077
<i>T. elephantina</i> Roxb.	Hogla patta	Herb, er; w	Wtl	Mo	Ed, Tm	SSS 3660
Zingiberaceae Martinov						
* <i>Alpinia nigra</i> (Gaertn.) Burt	Tara	Herb, er; w	Rb, Wtl	Fa, Sa	M	GMH 0093
* <i>Curcuma longa</i> L. #	Halud	Herb, er; cv	Fl, Hs	All upazilas	M, Sp	GMH 1869
* <i>C. zedoaria</i> (Christm.) Rosc.	Sathi	Herb, er; w	Fl, Gl, Rs	All upazilas	M, Pf	GMH 0150
* <i>Globba multiflora</i> Wall. ex Baker	Shukh globba	Herb, er; w	Sj, Fm	Sa	M	GMH 1877
<i>Hedychium coronarium</i> J.König #	Dolon chapa	Herb, er; cv	Hs, Rs	Bs, Fa, Mo	M, O	GMH 1861
<i>Zingiber officinale</i> Roscoe #	Ada	Herb, er; cv	Fl, Hs	All upazilas	M, Sp	GMH 1872
Costaceae Nakai						
<i>Costus woodsonii</i> Maas #	Lipistic plant	Herb, er; cv	Gr	Bs	O	SSS 3651
Cannaceae Juss.						
<i>Canna glauca</i> L. #	Holud kolabati	Herb, er; cv	Gr, Hs	Bs, Mo	O	SSS 3654
* <i>C. indica</i> L. #	Kolabati	Herb, er; w	Fl, Hs, Rs	All upazilas	M, O	SSS 3659
Marantaceae R.Br.						
<i>Maranta arundinacea</i> L. #	Barli	Herb, er; w	Sj, Wl	Fa	M, O	GMH 1864
<i>Schumannianthus benthamianus</i> (Kuntze) Veldkamp & I.M.Turner	Pati pata	Shrub; w	Hs, Wtl	Bs, Fa,	Hc, M	GMH 4041
Pontederiaceae Kunth						
* <i>Eichhornia crassipes</i> (Mart.) Solms #	Kachuripana	Herb, ff; w	Wtl	All upazilas	Gm, Lf	GMH 0169
* <i>Monochoria hastata</i> (L.) Solms	Bara nukha	Herb, er, w	Wtl	All upazilas	Gm, Vg	GMH 0229
* <i>M. vaginalis</i> (Burm. f.) C. Presl	Nukha	Herb, er; w	Wtl	Ra, Sa	M, Vg	GMH 1879
Amaryllidaceae J. St.-Hil.						
<i>Allium cepa</i> L. #	Piyaj	Herb, er; cv	Af, Hs	All upazilas	M, Sp	SSS 3652
<i>A. sativum</i> L. #	Rashun	Herb, er; cv	Af, Hs	All upazilas	M, Sp	SSS 3658
<i>Crinum americanum</i> L. #	Bara kanur	Herb, er; w	Hs, Wl	Bs, Mo	M, O	GMH 1862
* <i>C. asiaticum</i> L.	Shukdarshan	Herb, er; w	Hs, Wl	Mo, Sa	M, O	GMH 0143
* <i>C. latifolium</i> L.	Sukhdarshan	Herb, er; w	Ml	Sa	O	GMH 0144
* <i>C. viviparum</i> (Lam.) R. Ansari & V. J. Nair	Gang kochu	Herb, er; w	Rb, Wtl	Mo, Sa	M	GMH 0022
<i>Scadoxus multiflorus</i> (Martyn) Raf.	Agni golock	Herb, er; pl	Fl, Hs	Bs	M, O	GMH 1878
Asparagaceae Juss.						
<i>Agave americana</i> L. #	Shatabdi udvid	Herb, er; cv	Hs	Bs	M, O	GMH 1866
<i>Asparagus racemosus</i> Wild.	Shatamuli	Herb, cl; w	Fl, Rs	Ra	M	GMH 1875
* <i>Cordyline fruticosa</i> (L.) A.Chev.	Agnishwar	Herb, er; cv	Hs, Rs	All upazilas	M, O	GMH 1888
<i>Dracaena angustifolia</i> (Medik.) Roxb.	Chikna drakan	Shrub; pl	Gr, Hs	Bs, Fa, Ml	O	GMH 1881
<i>D. reflexa</i> Lam.	Dracaena	Shrub; pl	Gr, Hs	Bs, Mo	O	GMH 1865
<i>D. spicata</i> Roxb.	Kado drakan	Shrub; pl	Gr, Hs	Bs	O	GMH 1863

Scientific name	Bangla name	Habit	Habitat	Distribution	Use	RSE
<i>D. trifasciata</i> (Prain) Mabb. #	Snake plant	Herb, er; cv	Gr, Hs, Rs	All upazilas	O	GMH 1865
<i>Furcraea foetida</i> (L.) Haw. #	Gandho hemp	Shrub; pl	Gr, Hs	Bs, Fa, Mo	O	GMH 1882
Hypoxidaceae R.Br.						
* <i>Curculigo orchoides</i> Gaertn.	Talmuli	Herb, er; w	Sj, Wl	Fa, Sa	M	GMH 0149
Xanthorrhoeaceae Dumort.						
<i>Aloe vera</i> (L.) Burm.f. #	Ghritakumari	Herb, er; cv	Hs	Bs, Fa Mo, Mr, Sa	Co, M	SSS 3653
Smilacaceae Vent.						
* <i>Smilax ovalifolia</i> Roxb. ex D.Don	Kumarika	Herb, cl; w	Sj, Wl	Ch, Fa, Ra, Sa	M	GMH 0277
<i>S. perfoliata</i> Lour.	Kumari lata	Herb, cl; w	Sj, Wl	Fa	M	GMH 1880
Dioscoreaceae R.Br.						
<i>Dioscorea alata</i> L.	Chupri alu	Herb, cl; w	Sj, Wl	All upazilas	M, Vg	GMH 1871
<i>D. bulbifera</i> L.	Ban alu	Herb, cl; w	Sj, Wl	Bs, Fa, Ra	M	GMH 0162
<i>D. esculenta</i> (Lour.) Burkill	Mou alu	Herb, cl; cv	Hs, Sj, Wl	Fa, Ch, Ml, Ra, Sa	Vg	GMH 1883
* <i>D. hamiltonii</i> Hook. f.	Dudh alu	Herb, cl; w	Fm, Wl	Bs, Fa, Sa	M	GMH 1868
<i>D. pentaphylla</i> L.	Jhum alu	Herb, cl; w	Sj, Wl	All upazilas	M, Vg	GMH 1876
Orchidaceae Juss.						
* <i>Acampe ochracea</i> (Lindl.) Hochr.	Kampera	Herb, ep; w	Op	Bs, Fa, Mo, Sa	M, O	GMH 4018
* <i>A. praemorsa</i> (Roxb.) Blatt. & McCann	Rashna, kandori phol	Herb, ep; w	Op	Bs, Fa, Mo, Sa	M, O	GMH 4030
* <i>A. rigida</i> (Buch.-Ham. ex Sm.) P.F.Hunt	Kampera	Herb, ep; w	Op	Mo, Sa	M, O	GMH 4037
* <i>Bulbophyllum oblongum</i> Rchb. f.	Trias orchid	Herb, ep; w	Op	Mo, Sa	O	GMH 0075
* <i>B. roxburghii</i> (Lindl.) Rchb.f.	Bulb orchid, bulborox	Herb, ep; w	Op	Mo, Sa	O	GMH 4026
* <i>Cleisostoma appendiculatum</i> (Lindl.) Benth. & Hook. f. ex B.D.Jacks.	Appentum	Herb, ep; w	Op	Sa	O	GMH 4063
* <i>C. simondii</i> (Gagnep.) Seidenf. #	Simond orchid	Herb, ep; w	Op	Mo, Sa	O	GMH 3505
* <i>Dendrobium anceps</i> Sw.	Ansirium	Herb, ep; w	Op	Mo, Sa	O	GMH 0027
* <i>Geodorum densiflorum</i> (Lam.) Schltr.	Sankhamul	Herb, er; w	Fl, Ml	Sa	M, O	GMH 4070
* <i>Luisia brachystachys</i> (Lindl.) Blume	Borolucia	Herb, ep; w	Op	Mo, Sa	M, O	GMH 4055
* <i>L. trichorrhiza</i> (Hook.) Blume	Lanka luci	Herb, ep; w	Op	Mo, Sa	O	GMH 4015
* <i>L. tristis</i> (G. Forst.) Hook.f.	Lucia	Herb, ep; w	Op	Mo, Sa	O, Pf	GMH 4021
* <i>Micropera obtusa</i> (Lindl.) Tang & F.T.Wang	Konepera orchid	Herb, ep; w	Op	Sa	O	GMH 4060
* <i>Oberonia disticha</i> (Lam.) Schltr. #	Oberonia	Herb, ep; w	Op	Sa	O	GMH 3370
* <i>O. gammiei</i> King & Pantl.	Oberonia	Herb, ep; w	Op	Mo, Sa	O	GMH 4033
* <i>O. mucronata</i> (D. Don) Ormerod & Seidenf.	Nataroni orchid	Herb, ep; w	Op	Mo, Sa	O	GMH 4017
* <i>Pelatantheria insectifera</i> (Rchb.f.) Ridl.	Pelafera orchid	Herb, ep; w	Op	Mo, Sa	O	GMH 4040
<i>Vanda tessellata</i> (Roxb.) Hook. ex G.Don	Rasna	Herb, ep; w	Op	Bs, Fa	O	GMH 4028
* <i>Zeuxine strateumatica</i> (L.) Schltr.	Setguli	Herb, er; w	Gl, Ml	Sa	O	GMH 0306

Notes: *Habit:* cl- climber, cr- creeper, cv- cultivated, em- emergent, ep- epiphyte, er- erect, ff- free floating, fr- floating with rooted, l- large, li- liana, lp- lithophyte, m- medium, pl- planted pr- prostrate, ps- parasite, s- small, sc- scandant, sm- submerged, vi- vine, w- wild; *Habitat:* Af- Agri-field, Fl- Fallowland, Fm- Forest margin, Gl- Grassland, Gr- Garden, Hs- Homestead, Ml- Marginal land, Obw- On brick wall, Op- On plant, Rb- River bank, Rs- Roadside, Sj- Scrub jungle, Wl- Woodland, Wtl- Wetland; *Distribution:* Bs- Bagerhat sadar upazila; Ch- Chitalmari upazila; Fa- Fakirhat upazila; Ka- Kachua upazila; Ml- Mollahat upazila; Mr- Morelgonj upazila; Mo- Mongla upazila; Ra- Rampal upazila; Sa- Sharankhola upazila; *mark indicating the species distributed in Sundarbans mangrove forest area of Bagerhat district; # mark indicating

the species of exotic origin; *Uses:* Ap- aquarium plant, Co- Cosmetics, Dy- Dye yielding, Ed- Edible, Fb- Fibre, Ff- Fish feed, Fp- Fish poison, Fr- Fruit, Fw- Fuel wood, Gm- Green manure, Gu- Gum, Hc- Handicrafts, He- Hedge, Hp- Honey plant, Ju- Juice, Lf- Livestock feed, M- Medicine, Nu- Nut, O- Ornamental, Oy- Oil yielding, Pf- Perfume, Pp- Paper pulp, Pu- Pulse, Sb- Soil binder, Sp- Spice, T- Timber, Tm- Theaching material, Vg- Vegetable, Wp- Water purify; *RSE:* GMH-Gazi Mosharof Hossain, MSR- Mohammad Sayedur Rahman, SAK- Saleh Ahammad Khan, SSS- Shayla Sharmin Shetu.

In Pteridophyta, Pteridaceae with seven species was the largest, which was followed by Polypodiaceae, Salviniaceae and Thelypteridaceae representing five, four and three species, respectively. Each of the families Marsileaceae, Vittariaceae, and Lygodiaceae was represented by two species. The families representing the Gymnosperms were Cupressaceae and Cycadaceae, each with two species, and Araucariaceae, Pinaceae and Zamiaceae, with only one species each.

In Magnoliopsida, 50.51% of species were comprised of twelve families *viz.* Fabaceae (58 species), Asteraceae (46 species), Euphorbiaceae (37 species), Apocynaceae (34 species), Acanthaceae (29 species), Malvaceae (28 species), Lamiaceae (26 species), Rubiaceae (22 species), Caesalpiniaceae (18 species), Solanaceae (18 species), Convolvulaceae (17 species) and Cucurbitaceae (17 species) that constituted 36.30% species of the vascular flora of Bagerhat district. Most of the species of Liliopsida (69.83%) were represented by the five families *viz.*, Poaceae (68 species), Cyperaceae (43 species), Orchidaceae (19 species), Araceae (17 species) and Arecaceae (15 species), which together comprised 16.80% of the vascular flora of this district. The monocot genus *Cyperus* L. composed of 21 species was the largest in the vascular flora of the study area, which was followed by another monocot genus *Fimbristylis* Vahl with 13 species, and the dicot genera *Euphorbia* L. and *Ficus* Tourn. ex L, each with 11 species, *Solanum* L. with nine, *Ipomoea* L. with eight, *Hibiscus* L. with seven, and *Hygrophila* R.Br., *Phyllanthus* L. and *Persicaria* Mill., each with six species.

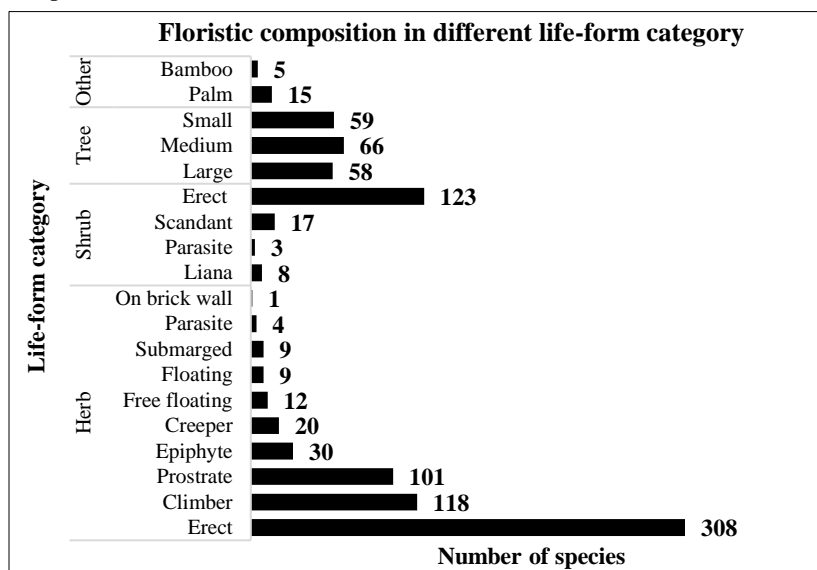


Fig. 2. Floristic composition in different life-form categories of Bagerhat district.

A total of 612 species (63.35%) of this flora and most of the Magnoliopsida and Liliopsida were herbs, 183 (18.94%) shrubs, 151 (15.63%) trees, 15 (1.55%) palms and five (0.52%) bamboos (Fig. 2). The majority of the herbaceous species were erect (50.33%), which was followed by climber (19.28%), prostrate (16.50%), epiphyte (4.9%), creeper (3.27%) and others (floating,

submerged and parasite etc.). Medium-sized trees were observed at higher percentage (36.07%) than the large (31.69%) or small (32.24%) trees (Fig. 2).

Most of the shrubs were erect and spreading (76.16%), some were scandent (10.60%), and a few were liana and parasites (Fig. 2). About 70.81% of the species including most of the Magnoliopsida (472 species) and Liliopsida (181 species) were found in the wild. The rest of the species were recognized as planted (21.53%) and cultivated (7.66%). All species of Pteridophytes were found in the wild but those of the Gymnosperms as planted.

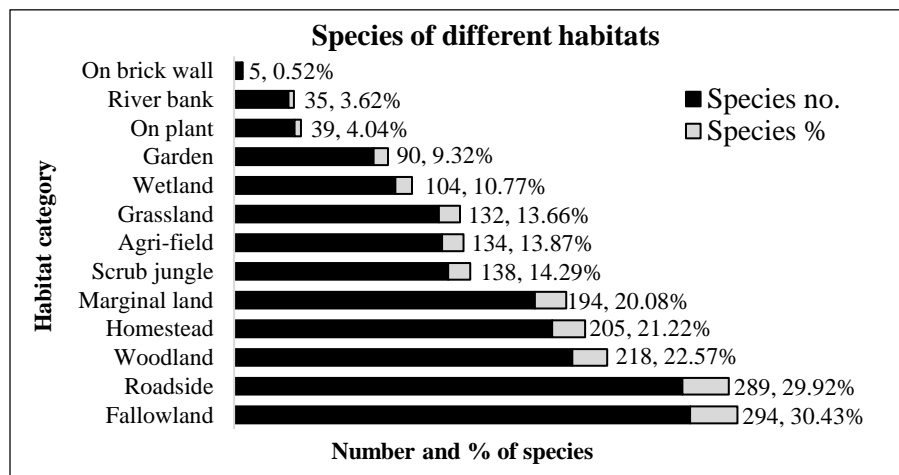


Fig. 3. Number and per cent of plant species in different habitats of Bagerhat district.

The plant species of the Bagerhat district were found to grow in 13 different kinds of habitats (Fig. 3), in which fallow land harbours the higher percentage (30.43%) of species that was followed by roadsides (29.92%), woodlands (22.57%), homesteads (21.22%), marginal lands (20.08%), scrub jungles (14.29%), agricultural fields (13.87%), grasslands (13.66%) and wetlands (10.77%). The occurrence of some species was recorded from gardens, other plants, river banks and brick walls (Fig. 3). The number of species with exclusive distribution in wetlands was 56, in homesteads 36 species, in woodland and on other plants 27 species each, in gardens 23 species, in grassland 21 species, in agricultural fields and roadsides 19 species each, in scrub jungle 14 species, in marginal lands nine species, and in other types of habitats less than four species each.

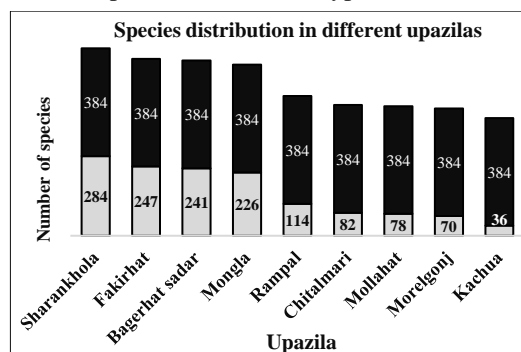


Fig. 4. Plant species composition in the upazilas of Bagerhat district.

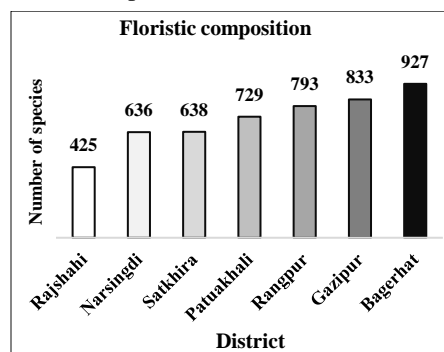


Fig. 5. Comparative Angiosperm species composition in some districts.

In Bagerhat, the majority of the species (39.75%) were found to be distributed in all of the nine upazilas. However, Sharankhola, Fakirhat, Bagerhat sadar and Mongla upazilas harboured 29.40%, 25.57 %, 24.95 % and 23.40 % of the species, respectively. The occurrence of a relatively lower percentage of the species was found in other upazilas. A total of 100, 43, 20, and 17 species were found to be exclusively distributed in Sarankhola, Bagerhat sadar, Fakirhat and Mongla upazilas, respectively. The rest of the upazilas viz., Mollarhat, Kachua, Morelganj, and Rampal, harboured less than three species exclusively, i.e., almost all of the species of these upazilas had overlapping distribution in other upazilas of Bagerhat district (Fig. 4).

In the study area, 17 species viz. *Acanthus volubilis* (Acanthaceae), *Andrographis paniculata* (Acanthaceae), *Barringtonia acutangula* and *B. racemosa* (Lecythidaceae), *Calamus guruba* and *C. longisetus* (Arecaceae), *Bulbophyllum oblongum*, *B. roxburghii*, *Cleisostoma appendiculatum*, *Geodorum densiflorum*, *Luisia brachystachys* and *Zeuxine strateumatica* (Orchidaceae), *Cipadessa baccifera* (Meliaceae), *Dodonaea viscosa* (Sapindaceae), *Pajanelia longifolia* (Bignoniaceae), *Psilotum nudum* (Psilotaceae), *Rauvolfia serpentina* (Apocynaceae) were found as rare due to their small population, meager regeneration and very restricted distribution and occurrence. Among these species, *Bulbophyllum oblongum*, *B. roxburghii*, and *Cleisostoma appendiculatum* are reported as endangered in this country (Ahmed *et al.*, 2008-2009; Ara *et al.*, 2013). The species *Cipadessa baccifera* of Meliaceae was not reported from this country after its last record by Datta and Mitra (1953). Therefore, *Cipadessa baccifera* is rediscovered in Bangladesh by this study.

Bagerhat district is one of the vulnerable and disaster-prone coastal areas of Bangladesh (Rahman and Ferdous, 2017). Conversion of huge natural and agricultural areas for expanded fisheries projects (Chowdhury and Muniruzzaman, 2003; Karim, 2003; Kabir and Eva, 2014), frequent natural disasters including tidal surges and cyclones, increased urbanization or settlement, construction of highways and railways, unplanned tourism, improper waste management, oil and plastic pollution, increase in salinity and water logging, coal-based power plant establishment, tributary and river bank erosion through increased coastal shipping, invasion of exotic species, and lack of proper management and public awareness etc. are the critical threats for the natural habitats- and ecosystems, flora and species diversity in this district.

Although this district is under the stress of different major threats, its flora is still rich and comparatively in better status than some other districts of the country which might be due to its habitat suitability, landscape structure and continuous flow of fresh water throughout most of its areas through its several major rivers (viz. Panguchi, Daratana, Madhumati, Pasur, Haringhata, Mongla, Baleswar, Bangra and Goshairkhali) and the network of numerous canals, and the occurrence of huge mangrove forests. The data provided by this study on the vascular plants of Bagerhat districts will contribute as the baseline for any further study or development plan involving its biological resources. These data might also be useful to track the trend of changes in the floristic composition, plant species diversity and vegetation in course of time, contribute to the undertaking of appropriate biodiversity conservation initiatives, plant resource-based socio-economic development, and in the assessment of the impacts of climate change in this region.

To ensure the improvement, conservation and sustainable utilization of the plant resources of the study area, we firmly recommend adopting a master plan for the control and management of the massive anthropogenic interferences and strict enforcement of the forest laws following their necessary updating in this area, implementation of adequate measures for conservation of the threatened and depleting plant species of this area, and strict and adequate management of its protected area. We strongly suggests conducting regular inventories and monitoring programs on the flora and plant diversity of this district. We highly recommend adequate plantation programs, preferably with the wind- and saline tolerant deep-rooted plant species in the coastal belts and the

marginal lands of the river- and tributary banks, especially for the mitigation of the adverse impacts of natural disasters and protection of indigenous biological resources of the coastal area.

Acknowledgements

The authors are grateful to Grant for Advanced Research in Education (GARE), Bangladesh Bureau of Educational Information & Statistics (BANBEIS), Ministry of Education, Government of the People's Republic of Bangladesh (GoB) for funding this survey. The authors express their sincere thanks to the Jahangirnagar University Authority for providing all administrative and institutional support during this study and to the Forest Department of GoB for the required permission to visit the Sundarbans Mangrove Forests frequently. The authors are thankful to the Chief Editor and the Reviewers of the Journal for their critical review of the manuscript.

References

- Ahmed, Z.U., Begum, Z.N.T., Hassan, M.A., Khondker, M., Kabir, S.M.H., Ahmad, M., Ahmed, A.T.A., Rahman, A.K.A. and Haque, E.U. (Eds). 2008-2009. Encyclopedia of Flora and Fauna of Bangladesh. Vols. 6-8 & 12. Asiatic Society of Bangladesh, Dhaka.
- Ahmed, Z.U., Hassan, M.A., Begum, Z.N.T., Khondker, M., Kabir, S.M.H., Ahmad, M. and Ahmed, A.T.A. (Eds). 2009. Encyclopedia of Flora and Fauna of Bangladesh. Vols. 9-10. Asiatic Society of Bangladesh, Dhaka.
- Ali, A. 1999. Climate change impacts and adaptation assessment in Bangladesh. *Climate Research*, **12**: 109–116.
- Ara, H., Khan, B. and Uddin, S.N. 2013. Red Data Book of Vascular Plants of Bangladesh. Vol. 2. Bangladesh National Herbarium, Dhaka, pp. 1–280.
- Arefin, M.K., Rahman, M.M., Uddin, M.Z. and Hassan, M.A. 2011. Angiosperm flora of Satchari National Park, Habiganj, Bangladesh. *Bangladesh J. Plant Taxon.* **18**(2): 117–140.
- Ashrafuzzaman, M., Alam, M.K. and Sarwar, A.K.M.G. 2022. Addition of three new angiospermic taxa to the flora of Bangladesh. *Journal of Threatened Taxa.* **14**(3): 20786–20791.
- Ashrafuzzaman, M. and Sarwar, A.K.M.G. 2021. Addition to the angiospermic flora of Bangladesh: Family Acanthaceae. *Journal of Bangladesh Agricultural University* **19**(4): 447–455.
- Bridson, D. and Forman, L. 1989. *The Herbarium Handbook*. Royal Botanic Gardens, Kew, 214 pp.
- Choudhury, A.M. 2002. Managing natural disasters in Bangladesh. Presented at the Dhaka meet on sustainable development in Bangladesh: Achievements, opportunities and challenges at Rio+10 Organised by Bangladesh Unnayan Parishad, 19 pp.
- Chowdhury, M.B.R. and Muniruzzaman, M. 2003. Shrimp diseases and its' consequences on the coastal shrimp farming in Bangladesh. In: Wahab, M.A. (Ed). *Environmental and socioeconomic impacts of shrimp farming in Bangladesh*. Dhaka, pp. 39–48.
- Datta, R.M. and Mitra, J.N. 1953. Common plants in and around Dacca. *Bull. Bot. Soc. Beng.* **7**(1-2):1–110.
- District Statistics 2011 Bagerhat. 2013. Bangladesh Bureau of Statistics and Informatics Division, Ministry of Planning, Government of the People's Republic of Bangladesh. ParishankhanBhaban, E-27/A, Agargaon, Dhaka-1207, pp. 1–98.
- Ghani, A. 1998. *Medicinal Plants of Bangladesh with Chemical Constituents and Uses*. Asiatic Society of Bangladesh, pp. 1–467.
- Haque, A.K.M.K., Khan, S.A., Uddin, S.N. and Shetu, S.S. 2018. An annotated checklist of the angiospermic flora of Rajkandi Reserve Forest of Moulvibazar. Bangladesh. *Bangladesh J. Plant Taxon.* **25**(2): 187–207.
- Hooker, J.D. 1872-1897. *The Flora of British India*. Vols. 1-7. L. Reeve & Co., Ashford, Kent, UK.
- Hossain, G.M., Khan, S.A., Rahim, M.A., Rahman, M.S. and Islam, K.M.N. 2021. Floristic composition of the coastal district Satkhira, Bangladesh. *Bangladesh J. Plant Taxon.* **28**(1): 97–124.

- Hossain, G.M., Khan, S.A., Rahman, M.S. and Rahim, M.D. 2020. New records of three species and a variety of angiosperms for Bangladesh. *Bangladesh J. Plant Taxon.* **27**(2): 251–260.
- Islam, M.R., Uddin, M.Z. and Hassan, M.A. 2009. An assessment of the angiospermic flora of Ramgarh upazila of Khagrachhari district. Bangladesh. *Bangladesh J. Plant Taxon.* **16**(2): 115–140.
- Kabir, M.H. and Eva, I.J. 2014. Ecological consequences of shrimp farming in southwestern Bagerhat district of Bangladesh. *Austin J. Earth Sci.* **1**(1): 1–7.
- Karim, M.R. 2003. Present status and strategies for future development of shrimp farming in Bangladesh, In: Wahab, M. (Ed). *Environmental and socioeconomic impacts of shrimp farming in Bangladesh*, Dhaka, pp. 1–8.
- Khan, M.S. 1977. Onagraceae. In: Khan, M.S. (Ed). *Flora of Bangladesh*. Fasc. 6: 1–10. Bangladesh National Herbarium, BARC, Dhaka.
- Khan, M.S. and Huq, A.M. 2001. The vascular flora of Chunati wildlife sanctuary in south Chittagong. *Bangladesh J. Plant Taxon.* **8**(1): 47–64.
- Khan, M.S., Rahman, M.M. and Ali, M.A. (Eds). 2001. *Red Data Book of Vascular Plants of Bangladesh*. Vol. 1. Bangladesh National Herbarium, Dhaka, pp. 1-179.
- Khan, M.S.A. 2008. Disaster preparedness for sustainable development in Bangladesh. *Disaster Prevention and Management*, **17**(5): 662-671.
- Khan, S.A., Sultana, S., Hossain, G.M., Shetu, S.S., and Rahim, M.A. 2021a. Floristic composition of Jahangirnagar University Campus - A semi-natural area of Bangladesh. *Bangladesh J. Plant Taxon.* **28**(1): 27–60.
- Khan, S.A., Hossain, G.M., Shetu, S.S., Rahim, M.A., Islam, M.S., Ahmed, F.A. and Fairy, R.H. 2021b. A preliminary taxonomic study on the flora of Rangpur district, Bangladesh. *Bangladesh J. Plant Taxon.* **28**(2): 329–365.
- Khanam, R. and Khan, S.A. 2020. Angiosperms in Narsingdi district of Bangladesh: Class Liliopsida. *Bangladesh J. Plant Taxon.* **27**(2): 391–405.
- Khanam, R., Khan, S.A. and Rahim, M.A. 2020. Angiosperms in Narsingdi district of Bangladesh: Class Magnoliopsida. *Bangladesh J. Plant Taxon.* **27**(1): 153–271.
- Kulatunga, U., Wedawatta, G., Amaratunga, D., Parvez, A. and Biswas, R. 2012. Disaster risk reduction measures in Bangladesh. In: *Global challenges in construction industry: world construction symposium*, Colombo, Sri Lanka.
- Ostertag, R., Inman-Narahari, F., Cordell, S., Giardina, C.P. and Sack, L. 2014. Forest structure in low diversity tropical forests: A study of Hawaiian wet and dry forests. *PLoS ONE*9: e103268.
- Population and Housing Census, 2015. Zila Report: Bagerhat. 2011. Statistics and Informatics Division, Bangladesh Bureau of Statistics. Ministry of Planning, Government of the People's Republic of Bangladesh, pp. 1–325.
- Prain, D. 1903. *Bengal Plants*. Vols. 1 & 2. Reprint 1963. Botanical Survey of India, Calcutta.
- Rahman, A.H.M.M. 2013. Angiospermic flora of Rajshahi district, Bangladesh. *Amer. J. Life Sci.* **1**(3): 105–112.
- Rahman, M.S., Hossain, G.M., Khan, S.A. and Uddin, S.N. 2015. An annotated checklist of the vascular plants of Sundarban mangrove forest of Bangladesh. *Bangladesh J. Plant Taxon.* **22**(1): 17–41.
- Rahman, M.T. and Ferdous, J. 2017. Detection of environmental degradation of Bagerhat district, Bangladesh through remote sensing indices.
- Rashid, S.H. and Mia, M.M.K. 2001. Angiospermic flora of Madhupur national park, Tangail, Bangladesh. *Bangladesh J. Plant Taxon.* **8**(2): 63–82.
- Roy, G.K. and Khan, S.A. 2020a. Preliminary taxonomic study on homestead flora of four districts of Bangladesh: Magnoliopsida. *Bangladesh Journal of Plant Taxon.* **27**(1): 37–65.
- Roy, G.K. and Khan, S.A. 2020b. Preliminary taxonomic study on homestead flora of four districts of Bangladesh: Liliopsida (Monocotyledons) and Pteridophyta. *Bangladesh J. Plant Taxon.* **27**(2): 407–425.

- Schaminée, J.H.J., Janssen, J.A.M., Hennekens, S.M. and Ozinga, W.A. 2011. Large vegetation databases and information systems: new instruments for ecological research, nature conservation, and policy making. *Plant Biosyst* **145**: 85–90.
- Sharrock, S. 2012. Global strategy for plant conservation: A guide to the GSPC. All the targets, objectives and facts. Richmond, UK.
- Shetu, S.S., Khan, S.A. and Uddin, S.N. 2018. Checklist of angiosperms extant in Mirpur area of Dhaka city. *Jahangirnagar Univ. J. Biol. Sci.* **7**(2): 47–64.
- Siddiqui, K.U., Islam, M.A., Ahmed, Z.U., Begum, Z.N.T., Hassan, M.A., Khondker, M., Rahman, M.M., Kabir, S.M.H., Ahmad, M., Ahmed, A.T.A., Rahman, A.K.T. and Haque, E.U. (Eds). 2007. Encyclopedia of Flora and Fauna of Bangladesh. Vols. 5 & 11. Asiat. Soc. Bangladesh, Dhaka.
- Singh, H.B. and Subramaniam, B. 2008. Field Manual on Herbarium Techniques. National Institute of Science Communication and Information Resources, pp. 1–297.
- Sultana, M. 2012. Taxonomic and ethnobotanical studies on the angiospermic flora of Patuakhali district in Bangladesh. Ph.D. Thesis (Unpublished). Department of Botany, University of Dhaka.
- Tabassum, R. 2015. Angiospermic flora of Gazipur district, Bangladesh. Doctoral Dissertation (Unpublished). Department of Botany, University of Dhaka, pp. 1–707.
- Uddin, M.Z., Hassan, M.A. and Khan, M.S. 2003. An annotated checklist of angiospermic flora of Rema Kalenga Wildlife Sanctuary (Habiganj) in Bangladesh IIa: Magnoliopsida (Dicots). *Bangladesh J. Plant Taxon.* **10**(1): 79–94.
- Uddin, S.N. and Hassan, M.A. 2018. Vascular Flora of Chittagong and the Chittagong Hill Tracts: Vols. 1-3. Bangladesh National Herbarium, Zoo Road, Mirpur 1, Dhaka 1216.
- Uddin, S.N., Khan, M.S., Hassan, M.A. and Alam, M.K. 1998. An annotated checklist of angiospermic flora of Sitapahar at Kaptai in Bangladesh. *Bangladesh J. Plant Taxon.* **5**(1): 13–46.
- van Valkenburg, J.L.C.H. and Bunyapraphatsara, N. (Eds). 2001. Plant resources of south-east Asia. No. 12(2). Medicinal and poisonous plants 2, Backhuys Publishers, Leiden, Netherlands, 782 pp. ISBN 90-5782-099-4
- WCMC (World Conservation Monitoring Centre). 1992. Global Biodiversity: Status of Earth's Living Resources. Chapman and Hall, London, UK. 585 pp.
- World Bank. 2005. Natural disaster Hotspots: A global risk analysis (Disaster Risk Management Series No. 5). Washington, DC. 132 pp.

(Manuscript received on 12 December, 2021; revised on 28 May, 2022)