

## BACTERIAL LOAD AND MULTI-DRUG RESISTANCE PATTERNS OF SOME READY-TO-EAT STREET FOODS OF DHAKA CITY

MIHIR LAL SAHA\*, MIST. DILARA AKTER, TAHSIN KHAN, ANEESA ANSARI  
AND MOHAMMAD NURUL ISLAM

*Department of Botany, University of Dhaka, Dhaka- 1000, Bangladesh*

*Key words:* Bacterial load, RTE street foods, Coliform bacteria, MDR, MAR index

### Abstract

Bacterial load and drug resistance pattern associated with some ready-to-eat (RTE) street foods such as Chatpoti, Fuchka, Singara, Panipuri, Ghugni-muri, Chola and water of Dhaka South City Corporation were investigated. Most of the samples were found to be contaminated and the bacterial load ranged from  $2.4 \times 10^4$  -  $9.2 \times 10^6$ ,  $1.2 \times 10^3$  -  $7.3 \times 10^5$  and  $1.1 \times 10^3$  -  $1.6 \times 10^6$  cfu/g of aerobic heterotrophic, coliform bacteria and *Staphylococcus*, respectively. The highest coliform load ( $7.3 \times 10^5$  cfu/ml) was found in the water of Gulistan. The highest aerobic heterotrophic bacteria ( $9.2 \times 10^6$  cfu/g) and *Staphylococcus* ( $1.6 \times 10^6$  cfu/g) were observed in the Chatpoti of Nilkhet. Among the isolated 100 different bacterial colonies, 20 Gram-positive and 8 Gram-negative isolates were studied in details. Based on the morphological and biochemical analysis, the Gram-positive isolates were identified as *Staphylococcus* (9), *Bacillus* (4), *Kurthia* (3), *Planococcus* (1), *Micrococcus* (1), *Listeria* (1) and *Renibacterium* (1). Gram-negative isolates were identified as *Klebsiella pneumoniae* (3), *Yersinia pestis* (1), *Y. pseudotuberculosis* (1), *Escherichia coli* (1), *Enterobacter aerogenes* (1) and *Plesiomonas shigelloides* (1). The multi-drug resistance (MDR) pattern was found to be diverse. Among the MDR bacteria, *Enterobacter aerogenes* was found to be resistant against six common antibiotics. *Plesiomonas shigelloides* and *Yersinia pestis* were found to be resistant against five antibiotics. The multiple antibiotic resistant (MAR) indices of Gram-negative isolates ranged in between 22.22 and 66.67%. Conventionally identified five bacterial isolates with significant MAR indices were further identified with 16S rDNA sequencing and found to be as *Enterobacter cloacae* Ecl1, *Plesiomonas shigelloides* CIFRI, *Aeromonas* sp. TIL\_WAK\_4, *Aeromonas* sp. 280 and *Klebsiella pneumoniae* KPS77. Conventional identification was found to be accurate for three isolates but the two *Yersinia* sp. were identified to be as *Aeromonas* sp. in 16S rDNA sequencing.

### Introduction

In Bangladesh, Chatpati, Fuchka, Velpuri, Panipuri, Alupuri, Samosa, Singara, Beguni, Chop etc. are very common and popular ready-to-eat (RTE) food items<sup>(1)</sup>. Selling street foods is an important occupation in many cities of developing countries and

---

\*Author for correspondence: <sahaml@yahoo.com>.

consumption of street foods is also common here as unemployment is high, salaries are low, work opportunities are limited and rapid urbanization is taking place<sup>(2)</sup>. Several observational studies have shown that street foods are sometimes held at improper temperatures, excessively handled by food vendors and sold at very dirty surroundings that make them prone to contamination and frequently cause diarrhoeal diseases<sup>(3)</sup>. Majority of poor people in developing countries obtain food from informal markets but these are often neglected by food safety authorities and little is known about their impacts on public health<sup>(4)</sup>. Street food vendors are mostly uninformed of good hygiene practices (GHP) and contribute in the spread of diarrhoeal diseases<sup>(5)</sup>.

The number of food poisoning notifications rose steadily worldwide since the inception of *E. coli* O157:H7 outbreak in the 1980s to date<sup>(6)</sup>. Approximately, 30 million people in Bangladesh are suffering from food borne illnesses each year<sup>(7)</sup>. In addition, multi-drug resistance (MDR) of food borne microorganisms has made the food safety situation more vulnerable in public health<sup>(6)</sup>. Food borne illnesses caused by MDR microorganisms are a major national and international health problem and an important cause of death in developing countries<sup>(8)</sup>. Considering all these facts and situation, the present study was undertaken to assess the bacterial load and their multi-drug resistance pattern of RTE street foods and water of public rushed areas of Dhaka South City Corporation.

### **Materials and Methods**

Samples of RTE foods as Chatpoti, Fuchka, Boiled Chola, Ghugni-muri, Panipuri and Singara were collected from nine different populated areas of Dhaka South City Corporation *viz.* Shahabag, Nilkhet, Gausia market, Polashi, New Market, Chankharpul, Gulistan, Bokshi Bazar and Press Club. Samples were collected in sterile polythene bags and water samples were collected in sterile plastic bottles and brought to the laboratory immediately for bacteriological analysis.

Ten g of RTE food samples were taken in a sterile conical flask containing 100 ml of sterile water. In case of water, 1 ml of sample water was added in sterile conical flask containing 99 ml sterile water. Bacterial load of the samples was then measured by ten-folds serial dilution technique<sup>(9)</sup>. Nutrient agar (NA) medium was used for aerobic heterotrophic bacteria while MacConkey agar (Scharlau Chemie, Japan) and Mannitol Salt Agar (MSA) (Oxoid) were used for coliform bacteria and *Staphylococcus* sp., respectively. The plates were incubated at 37°C in an incubator (Mettler GmbH + Co Kg 8540 Schwabach) for 24 hrs. After incubation, the well discrete colonies were counted by a colony counter (DC-8 OSK 100086, Kayagaki, Japan).

Important physiological and biochemical tests were carried out and conventional identifications of the isolates were made following standard laboratory manuals<sup>(10-13)</sup>. Antibiotic susceptibility test was performed by the Kirby-Bauer disc diffusion method<sup>(14)</sup>

on Mueller-Hinton agar. Zone diameter around the discs was measured and the isolates were classified as susceptible (S), intermediately resistant (I) and resistant (R). Nine antibiotics *viz.*, cefuroxime (CXM 30µg), neomycin (NEO 30µg), gentamycin (GEN 10µg), kanamycin (KAN 30µg), doxycycline (DOX 30µg), ciprofloxacin (CIP 5µg), rifampicin (RIF 5µg), erythromycin (ERY 15µg) and chloramphenicol (CHL 30µg) were tested. Multiple antibiotic resistance (MAR) index % of the isolates was determined using the following formula<sup>(15)</sup>:

$$\text{MAR index \%} = \frac{\text{No. of antibiotics to which pathogen showed resistance}}{\text{No. of antibiotics used}} \times 100$$

Molecular identification of MDR bacterial strains was conducted based on 16S rDNA sequence analysis. The following primer pairs - 5'-16S rRNA: CCAGACTCCTACGGG AGGCAGC, 3'-16S rRNA: CTTGTGCGGGCCCCGTCAATTC were used to amplify a part (~600 bp) of the rRNA gene. Supernatant of heat lysed cell suspension was used as the source of template DNA for PCR amplification following protocol as described in our previous work<sup>(16)</sup>. The amplified products were separated electrophoretically on 1% agarose gel. DNA bands were observed on UV-transilluminator and photographed by a gel documentation system (Microdoc DI-HD, MUV21-254/365, Cleaver Scientific). The sequence generated from automated sequencing of PCR products were analyzed through NCBI-BLAST database (<http://blast.ncbi.nlm.nih.gov/>) and rRNA BLAST (<http://bioinformatics.psb.ugent.be/cgi-bin/rRNA/blastform.cgi>) programs to find out possible similar organisms in the data bases. The data were analyzed to determine the descriptive statistics *viz.* statistical mean and standard deviation (Sd) with SPSS v.16.0 for windows (SPSS, SAS Institute Inc. Cary, USA).

## Results and Discussion

The aerobic heterotrophic bacterial load of the samples ranged between  $2.4 \times 10^4$  and  $9.2 \times 10^6$  cfu/g (Table 1). Maximum heterotrophic bacterial count ( $9.2 \times 10^6$  cfu/g) was observed in the Chatpoti of Nilkhet. The coliform and staphylococcal bacterial load of the samples ranged from  $1.2 \times 10^3$  to  $7.3 \times 10^5$  and  $1.1 \times 10^3$  to  $1.6 \times 10^6$  cfu/g, respectively. The highest coliform load ( $7.3 \times 10^5$  cfu/ml) was found in the water sample of Gulistan and highest *Staphylococcus* ( $1.6 \times 10^6$  cfu/g) was observed in the Chatpoti of Nilkhet. Similar findings were also observed by other workers<sup>(17-20)</sup>. In most cases, potable water supply was not available to the vendors and thus hand and dish washing are usually done in one and same bucket. Considering coliform contamination, the water of the RTE food shops was not safe for drinking. Vendors usually prepare and serve the food in bare and unwashed hands which could be the most probable sources of contamination<sup>(6)</sup>. The use of raw vegetables *viz.* cucumber, tomato, carrot, onion, green chili, tamarind and

coriander leaf samples also contribute to the bacterial load<sup>(17)</sup>. The contamination may originate also from the utensils or through transportation.

**Table 1. pH and bacterial load of the samples.**

Sample		Bacterial load (cfu/g of RTE foods and cfu/ml of water)		
Sites	Type	Aerobic heterotrophic bacteria on NA	Coliforms on MacConkey agar	<i>Staphylococcus</i> on MSA
Shahabag	Chatpoti	$8.2 \times 10^6$	$4.4 \times 10^5$	$2.4 \times 10^4$
	Fuchka	$8.7 \times 10^6$	$2.4 \times 10^5$	$2.2 \times 10^4$
Nilkhet	Chatpoti	$9.2 \times 10^6$	$5.0 \times 10^4$	$1.6 \times 10^6$
	Fuchka	$8.8 \times 10^6$	$7.4 \times 10^4$	$2.0 \times 10^5$
Gausia Market	Chatpoti	$4.1 \times 10^6$	$1.5 \times 10^4$	$2.4 \times 10^4$
	Fuchka	$2.9 \times 10^6$	$2.0 \times 10^3$	$3.1 \times 10^4$
Polashi	Chola	$1.5 \times 10^6$	$2.6 \times 10^5$	$2.4 \times 10^5$
New Market	Ghugni-muri	$8.3 \times 10^6$	$5.2 \times 10^4$	$5.9 \times 10^4$
Chankharpul	Water	$5.0 \times 10^4$	$1.2 \times 10^3$	Nill
Gulistan	Water	$2.5 \times 10^4$	$7.3 \times 10^5$	Nill
Bokshibazar	Panipuri	$8.5 \times 10^4$	$2.9 \times 10^4$	$4.9 \times 10^4$
Press club	Singara	$2.4 \times 10^4$	Nill	$1.1 \times 10^3$
Azimpur	Chola	$7.7 \times 10^6$	$3.0 \times 10^5$	$2.2 \times 10^5$

NA = Nutrient agar, MSA = Mannitol salt agar.

During this study, a total of 100 colonies were primarily isolated and finally 28 were selected randomly of which 20 were Gram-positive bacteria and 8 were Gram-negative. These isolates were purified for detailed study for their important biochemical characters for provisional identification (Table 2). Among the Gram-positive isolates, 9 were rod shaped, spore former and remaining 11 isolates were coccus. Fig. 1 clearly indicated that among the Gram-positive bacteria, *Staphylococcus* was the dominant genus (31%) having 3 distinct species viz., *S. auricularis* (3), *S. caseolyticus* (1) and *S. epidermidis* (5). Wertheim *et al.*<sup>(21)</sup> mentioned that the different species of *Staphylococcus* are one of the most predominantly virulent human pathogens causing a wide range of diseases. Other Gram-positive isolates were identified as different species of *Bacillus* (14%), *Kurthia* (10%), *Listeria* (4%), *Micrococcus* (4%), *Planococcus* (4%) and *Renibacterium* (4%). All the 8 Gram-negative isolates were short rods and non-spore former and identified as *Enterobacter aerogenes* (4%), *Escherichia coli* (4%), *Klebsiella pneumoniae* (10%), *Plesiomonas shigelloides* (4%) and *Yersinia* spp. (7%). In our previous investigation more or less similar results were observed in some fresh vegetables, fruits and some RTE foods<sup>(19-20, 22)</sup>. Street foods

are also not protected from the various pathogens and contaminant carriers like flies and other insects, multifunctional hands and own health status of vendors. Potential health risks are reported to be associated with contamination of food by *E. coli*, *Salmonella typhi* and *Staphylococcus aureus* during preparation, post cooking and other handling stages<sup>(8)</sup>.

**Table 2. Major biochemical characteristics and provisional identification of bacteria associated with the RTE foods and water.**

Isolate	Biochemical characteristics						Identified bacteria
	VP	MR	Starch	Tyrosine	Urease	Lecithinase	
S/C/N/1	-	+	+	+	ND	+	<i>Bacillus brevis</i>
S/C/N/2	+	-	+	-	ND	-	<i>B. circulans</i>
P/S/N/4	+	+	+	-	ND	+	<i>B. firmus</i>
P/S/N/5	+	-	+	-	ND	+	<i>B. lentus</i>
P/S/N/1	+	-	+	-	ND	+	<i>Kurthia gibosonii</i>
N/C/N/2	+	-	+	-	ND	+	<i>K. zopfii</i>
P/S/N/2	+	+	+	-	ND	+	
N/F/N/1	+	-	-	+	ND	-	<i>Listeria welshimeri</i>
B/P/N/1	+	-	+	-	ND	+	<i>Micrococcus luteus</i>
G/C/N/2	+	+	-	+	ND	-	<i>Planococcus citreus</i>
C/W/N/1	+	+	-	+	ND	+	<i>Renibacterium salmoninarum</i>
S/C/Ms/1	+	+	-	-	ND	+	<i>Staphylococcus auricularis</i>
N/F/Ms/2	-	+	-	-	ND	-	
N/C/Ms/3	+	-	+	-	ND	-	
G/F/Ms/3	-	-	-	+	ND	+	<i>Staphylococcus caseolyticus</i>
B/P/Ms/1	-	+	+	-	ND	+	<i>Staphylococcus epidermidis</i>
B/P/Ms/3	-	-	+	-	ND	-	
S/F/Ms/1	+	-	-	-	ND	+	
B/P/Ms/2	-	+	-	-	ND	-	
N/M/Ms/1	+	+	-	-	ND	+	
N/M/Mc/1	+	-	-	ND	-	-	<i>Enterobacter aerogenes</i>
P/C/Mc/1	+	+	+	ND	-	-	<i>Escherichia coli</i>
G/C/Mc/3	+	+	-	ND	-	-	<i>Klebsiella pneumoniae</i>
B/P/Mc/2	+	-	-	ND	+	-	
B/P/Mc/3	+	-	-	ND	+	-	
S/F/Mc/1	-	+	+	ND	-	+	<i>Plesiomonas shigelloides</i>
B/P/Mc/1	-	-	-	ND	-	-	<i>Yersinia pestis</i>
S/C/Mc/2	+	-	+	ND	+	-	<i>Y. pseudotuberculosis</i>

+ = Positive result, - = Negative result, ND = Not done.

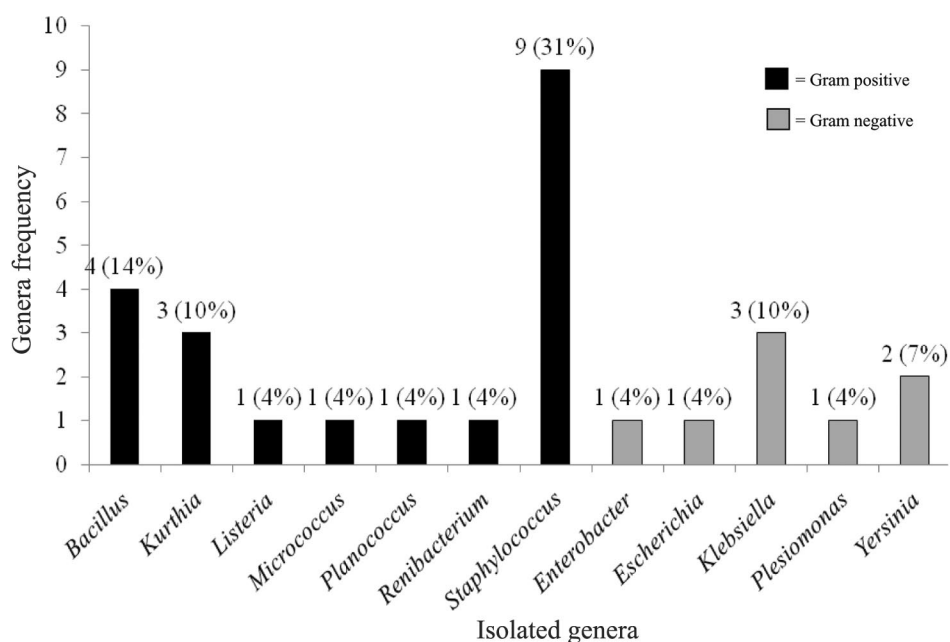


Fig. 1. Frequency of the identified bacterial isolates associated with RTE food and water.

Most of the Gram-positive isolates were susceptible and some were intermediate resistance to the tested antibiotics (data not shown). The Gram-negative isolates were found to be significant against antibiotic resistance pattern (Table 3). The MAR index of all the Gram-negative bacteria ranged in between 22.22 and 66.67%. Most of the isolates were found to be resistance against two common antibiotics, doxycyclin and ciprofloxacin. *Enterobacter aerogenes* was found to be resistant against six antibiotics *viz.* rifampicin, doxycycline, erythromycin, ciprofloxacin, gentamycin and kanamycin having the highest MAR index (66.67%). In an earlier work, Khan and Saha<sup>(20)</sup> found the MAR index in between 14.28 and 71.43% of the bacteria isolated from Chatpoti and *Enterobacter* sp. showed the maximum MAR index. In present study, both *Plesiomonas shigelloides* and *Yersinia pestis* showed resistance against five antibiotics and intermediate against two antibiotics. Similarly, *Y. pseudotuberculosis* was resistant against four antibiotics and intermediate against one antibiotic with MAR index of 44.44%. In another study Tabassum *et al.*<sup>(22)</sup> found *Pseudomonas syringae* to be resistant against five common antibiotics. Kim *et al.*<sup>(23)</sup> isolated a total of 132 *Klebsiella pneumoniae* isolates and all were found to be resistant against ampicillin, tetracycline, streptomycin, gentamycin and kanamycin. In the present study *Klebsiella pneumoniae* was found to be resistant against ciprofloxacin and doxycycline.

**Table 3. Antibiotic sensitivity pattern of the Gram-negative isolates.**

Bacteria	Zone diameter (Mean ± Sd) mm									MAR index (%)
	CXM (30 µg)	CHL (30 µg)	NEO (30 µg)	RIF (5 µg)	DOX (30 µg)	ERY (15 µg)	CIP (5 µg)	GEN (10 µg)	KAN (30 µg)	
<i>Enterobacter aerogenes</i>	52.00 ± 0.00 S	25.00 ± 0.00 S	19.66 ± 0.58 S	16.33 ± 0.58 R	7.33 ± 0.58 R	13.00 ± 1.00 R	0 R	12.33 ± 0.58 R	13.0 ± 1.00 R	66.67
<i>Escherichia coli</i>	26.33 ± 0.58 S	30.66 ± 0.57 S	25.33 ± 2.08 S	19.66 ± 0.58 I	9.33 ± 1.52 R	17.00 ± 1.00 I	0 R	15.00 ± 0.00 S	17.33 ± 0.57 S	22.22
<i>Klebsiella pneumoniae</i>	44.66 ± 2.00 S	25.00 ± 0.00 S	24.66 ± 0.58 S	18.33 ± 2.51 I	8.00 ± 1.00 R	15.00 ± 0.00 I	9.33 ± 0.57 R	13.00 ± 1.00 I	15.0 ± 1.00 I	22.22
<i>K. pneumoniae</i>	0 R	30.66 ± 1.15 S	19.33 ± 1.15 S	19.33 ± 1.15 I	9.66 ± 0.58 R	16.00 ± 1.00 I	9.66 ± 0.57 R	14.66 ± 1.52 I	15.33 ± 2.30 I	33.33
<i>K. pneumoniae</i>	28.00 ± 2.00 S	31.00 ± 1.70 S	28.00 ± 0.00 S	18.33 ± 1.52 I	10.33 ± 1.52 R	16.66 ± 1.10 I	9.33 ± 0.57 R	16.66 ± 2.88 S	17.33 ± 1.52 I	22.22
<i>Plesiomonas shigelloides</i>	30.00 ± 0.00 S	12.33 ± 0.57 R	28.66 ± 1.15 S	10.00 ± 1.00 R	0 R	16.66 ± 1.50 I	0 R	14.33 ± 0.58 I	11.66 ± 2.88 R	55.56
<i>Yersinia pestis</i>	21.00 ± 0.00 I	26.33 ± 0.57 S	21.00 ± 1.00 S	14.66 ± 1.15 R	8.33 ± 0.58 R	13.66 ± 1.10 R	0 R	10.00 ± 7.80 R	13.0 ± 1.00 I	55.56
<i>Y. pseudo-tuberculosis</i>	27.33 ± 0.58 S	10.33 ± 2.80 R	24.33 ± 0.58 S	9.00 ± 1.00 R	0 R	18.66 ± 0.57 I	7.33 ± 0.57 R	16.33 ± 0.58 S	20.33 ± 0.58 S	44.44

Zone diameters were studied in triplicates (n = 3) and presented as mean ± standard deviation (SD). CXM = Cefuroxime, CHL= Chloramphenicol, NEO = Neomycin, RIF = Rifampicin, DOX = Doxycycline, ERY = Erythromycin, CIP = Ciprofloxacin, GEN= Gentamycin and KAN = Kanamycin. S = Susceptible, I = Intermediate resistance and R = Resistant. MAR index % = Multiple Antibiotic Resistance Index percentage.

Molecular identification of five MDR bacterial isolates was conducted based on 16S rDNA sequence analysis and in the gel, approximate size of the amplified DNA band was 600 bp (Fig. 2). The automated sequencing of PCR products was analyzed and identified as *Enterobacter cloacae* Ec11 (N/M/Mc/1), *Plesiomonas shigelloides* CIFRI (S/F/Mc/1), *Aeromonas* sp. TIL\_WAK\_4 (B/P/Mc/1), *Aeromonas* sp. 280 (S/C/Mc/2) and *Klebsiella pneumoniae* KPS77 (G/C/Mc/3) (Table 4). Though molecular identification of three among the five matched with their conventional identification but both the provisionally identified *Yersinia* were identified to be as *Aeromonas* sp. Abdelraouf and Ferwana<sup>(24)</sup> mentioned difficulties in differentiating *Yersinia enterocolitica* and *Aeromonas hydrophila* through conventional techniques obtained from food and environmental samples.

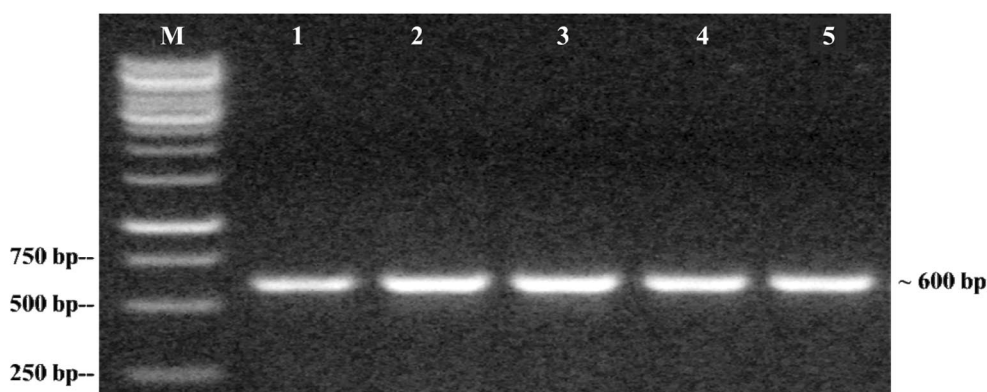


Fig. 2. PCR amplification of part of the 16S rRNA gene. Lane M is the 1.0 kb ladder and lanes 1-5 are representing 5 different bacterial isolates.

**Table 4. Conventional and molecular identification of selected bacterial isolates.**

Isolate	Conventional identification	Molecular identification				
		Scientific name	Strain	Identity match (%)	Max. coverage score	E-value
N/M/Mc/1	<i>Enterobacter aerogenes</i>	<i>E. cloacae</i>	Ec11	89	309	1e-42
S/F/Mc/1	<i>Plesiomonas shigelloides</i>	<i>P. shigelloides</i>	CIFRI	99	989	0.0
B/P/Mc/1	<i>Yersinia pestis</i>	<i>Aeromonas</i> sp.	TIL_WAK_4	98	872	0.0
S/C/Mc/2	<i>Y. pseudotuberculosis</i>	<i>Aeromonas</i> sp.	280	93	845	7e-158
G/C/Mc/3	<i>Klebsiella pneumoniae</i>	<i>K. pneumoniae</i>	KPS77	92	754	0.0



The bacterial load, the presence of some particular bacteria viz. *E. coli*, *Klebsiella*, *Enterobacter*, *Staphylococcus* and *Aeromonas* associated with the RTE street foods and water and their MDR pattern as well as the high MAR index indicate significant health hazard for the RTE food consumers and needs immediate public attention.

### Acknowledgements

The authors would like to express their gratitude to the Ministry of Science and Technology, People's Republic of Bangladesh for providing financial support for this research work through NST fellowship program as well as Centre for Advanced Research in Sciences, University of Dhaka for providing sequencing facilities.

### References

1. Rahman MM, MH Rahman and NP Ansary 2014. Safety issues of street foods in Bangladesh. *J. Biol. Sci. Technol.* **2**(1): 21-32.
2. Chumber SK, K Kaushik and S Savy 2007. Bacteriological analysis of street foods in Pune. *Ind. J. Pub. Heal.* **51**: 114-116.
3. Barro N, AR Bello, A Salvadogo, CA Ouattara, AJ Ilboudou and AS Traore 2006. Hygienic status assessment of dish washing waters, utensils, hands and pieces of monies from street food processing sites in Ouagadougou, Burkina Faso. *Afr. J. Biotechnol.* **5**(11): 1107-1117.
4. Oguttu JW, CME McCrindle, K Makita and D Grace 2014. Investigation of the food value chain of ready-to-eat chicken and the associated risk for staphylococcal food poisoning in Tshwane Metropole, South Africa. *Food Control* **45**: 87-94.
5. Gawande HA, AA Mishra, RN Shukla and J Jain 2013. Socio-economic profile of street food vendors and quality evaluation of Samosa and Panipuri in Allahabad city, UP, India. *Int. J. Agr. F. Sci. Technol.* **4**: 275-280.
6. Khairuzzaman M, FM Chowdhury, S Zaman, AA Mamun and ML Bari 2014. Food safety challenges towards safe, healthy and nutritious street foods in Bangladesh. *Int. J. Food Sci.* **2014**: 1-9.
7. FAO (Food and Agriculture Organization) 2012. The state of food insecurity in the World. <http://www.fao.org/docrep/016/i3027e/i3027e00.htm>.
8. Garode AM and SM Waghode 2012. Bacteriological status of street-vended foods and public health significance: A case study of Buldana District, MS, India. *ISCA J. Biol. Sci.* **1**(3): 69-71.
9. Greenberg AE, JJ Connors, DGJ Jenkins and MAH Franson 1998. Standard methods for examination of water and wastewater (20th ed.). APHA. Washington DC.
10. SAB (Society of American Bacteriologists) 1957. Manual of Microbiological Methods. McGraw-Hill Book Co. Inc. NY. pp. 315.
11. Collins CH and PM Lyne 1984. Microbiological methods (5th ed.). Butterworth and Co. Publishers Ltd. London. pp. 448.
12. Krieg NR and JG Holt 1984. Bergey's Manual of Systematic Bacteriology. Williams and Wilkins Company, Baltimore. USA. **1**: 964.

13. Sneath PHA, NS Mair, ME Sharpe and JG Holt 1986. *Bergey's manual of systematic bacteriology* (9<sup>th</sup> ed.). The Williams and Wilkins Co. Baltimore. USA. **2**: 1599.
14. Hudzicki J 2012. Kirby-Bauer disk diffusion susceptibility test protocol. *Microbe library*. American Society for Microbiology. pp. 1-29.
15. Mahapatra S, CC Rath, SK Dash and RK Mishra 2006. Microbial evaluation of wounds and their susceptibility to antibiotics and essential oils. *J. Microb. Worl.* **8**: 101-109.
16. Saha ML, T Khan, MM Kamal and MN Islam 2015. Proteolytic *Bacillus* spp. associated from tannery industries: Conventional and molecular identification. *Bangladesh J. Bot.* **44**(4): 557-564.
17. Tambekar DH, VJ Jaiswal, DV Dhanorkar, PB Gulhane and MN Dudhane 2008. Identification of microbiological hazards and safety of ready-to-eat food vended in streets of Amravati city, India. *J. Appl. Biosci.* **7**: 195-201.
18. Das K, RKS Tiwari and DK Shrivastava 2010. Techniques for evaluation of medicinal plant products as antimicrobial agent: Current methods and future trends. *J. Med. Plants Res.* **4**(2): 104-111.
19. Ali M, MR Khan and ML Saha 2011. Antibiotic resistant patterns of bacterial isolates from ready-to-eat (RTE) street vended fresh vegetables and fruits in Dhaka City. *Bangladesh J. Sci. Res.* **24**(2): 127-134.
20. Khan FI and ML Saha 2015. Bacteria laden street food (Chatpati) and their multiple antibiotic resistance index. *Bangladesh J. Bot.* **44**(4): 599-604.
21. Wertheim H, B Van, D Melles, H Verbrugh, J Nouwen, L Van and M Vos 2005. The role of nasal carriage in *Staphylococcus aureus* infections. *Lancet Infect. Dis.* **5**: 751-762.
22. Tabassum A, ML Saha and MN Islam 2015. Prevalence of multi-drug resistant bacteria in selected street food and water samples. *Bangladesh J. Bot.* **44**(4): 621-627.
23. Kim SH, CI Wei, YM Tzou and H An 2005. Multidrug-resistant *Klebsiella pneumoniae*, *Staphylococcus aureus* and *Shigella* species in some raw street vended Indian foods. *Int. J. Environ. Res. Pub. Heal.* **17**: 151-156.
24. Abdelraouf AE and N Ferwana 2011. *Yersinia enterocolitica* and *Aeromonas hydrophila* in Clinical, Food and Environmental Samples in Gaza Strip, PNA. *J. Al Azhar Univ.-Gaza.* **13**: 69-82.

(Manuscript received on 29 August 2017; revised on 13 November 2017)